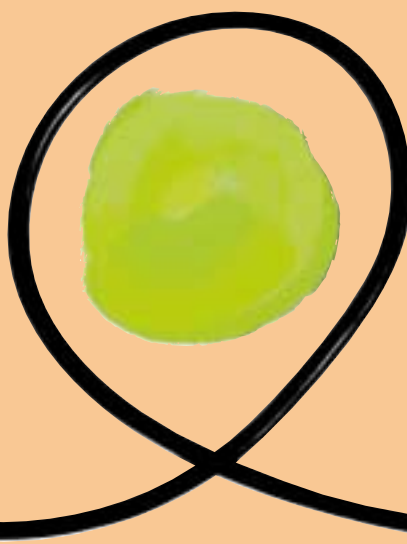




Recording Artists

RØDE[®]
MICROPHONES





Features:

- Large capsule with gold-plated membrane
- Ultra low-noise transformerless circuitry
- Cardioid polar pattern
- Heavy-duty cast metal satin nickel body
- High-strength welded and heat-treated mesh head, internal capsule shock-mounting
- True condenser (externally biased)
- Full frequency response.



NT1000

With its ultra low-noise transformerless circuitry the Rode NT1000 brings new standards to the recording industry

When today's musicians and recording engineers demand clarity and dynamic range, they demand large capsule performance.

The Rode NT1000 is superior in both vocal and instrumental performances.

Made from high quality components, including internal capsule shock-mounting the NT1000 provides unmatched quality and sound.

NT1000 the choice is yours.

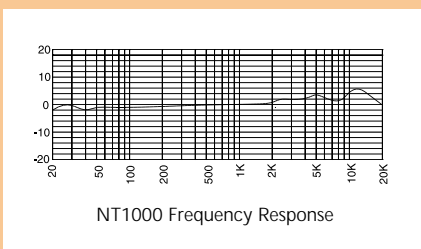
Accessories Included:

- Zip Pouch
- M2 Stand Mount
- 3/8" -5/8" Thread Adaptor



Specifications:

Capsule:	Externally polarised 1" pressure-gradient condenser
Active Electronics:	Unity-gain closed-loop impedance converter; JFET input with bipolar buffering
Polar Pattern:	Cardioid
Frequency Response:	20Hz - 20kHz (+/-6dB see graph)
Output Impedance:	100 ohms (50 ohms per leg)
Sensitivity:	-36dB re 1V/Pa (16mV @ 94dB SPL) +/-1dB
Equivalent Noise:	6dB SPL (A-weighted per IEC268-15) +/-1dB
Maximum Output:	+13dBu (@ 1kHz, 1% THD into 1k(load)
Dynamic Range:	> 134dB (A-weighted, per IEC268-15)
Maximum SPL:	> 140dB SPL (@ 1kHz, 1% THD into 1k(load)
Signal/Noise Ratio:	> 88dB (A-weighted, per IEC268-15)
Power Requirements:	6mA @ P48 (35V - 53V)
Packed Weight:	882 gm (Mic only 682 gm)



RØDE

MICROPHONES

PROUDLY MADE IN AUSTRALIA

