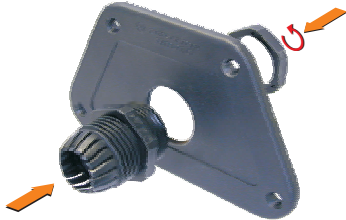


# StageBox

## Modular Connector Box System

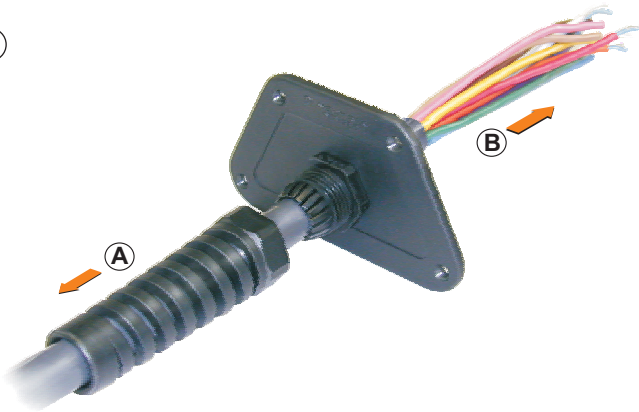
### Assembly Instructions

①



1. Assemble strain relief into the end piece with the hole.

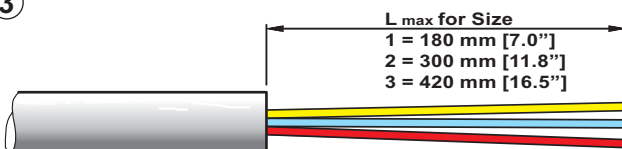
②



2. (A) Slide the bushing onto the cable.

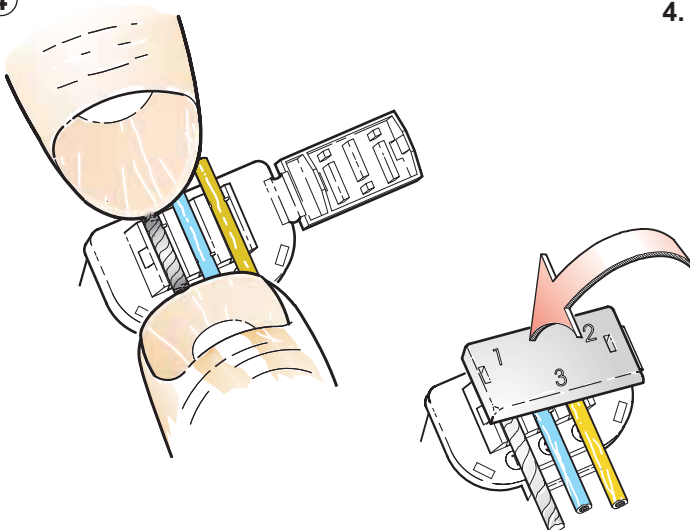
(B) Insert the cable into the strain relief.

③



3. Prepare the cable according to the drawing.

④

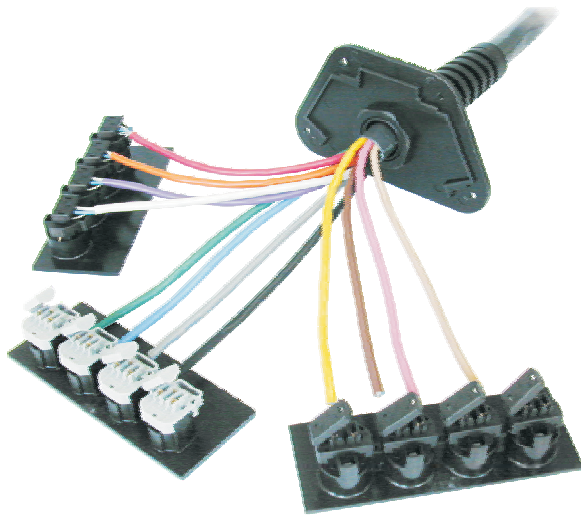


4. Insert the wire per channel into the cable clamps of each connector, check the channel numbering and the pin numbering of the XLR:

① = shield

② + ③ = signal wires

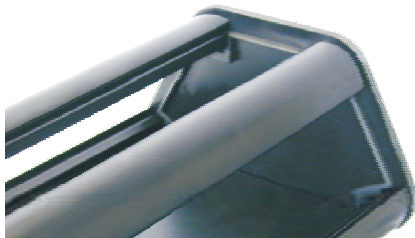
5



5. Connect the remaining cables with the connector plates.

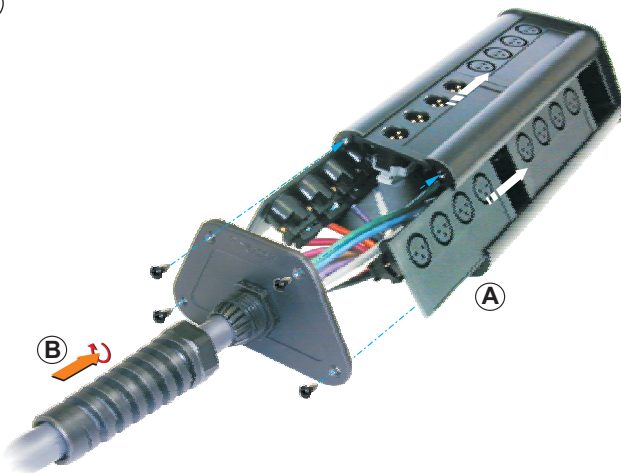
- Female plates for INPUTS
- Male plates for RETURNS

6



6. Preassemble the frames and the end piece with attached self tapping screws. Insert the rear plate.

7



7. **A** Slide in the assembled connector plates into the extensions and screw on the end piece with 4 screws.

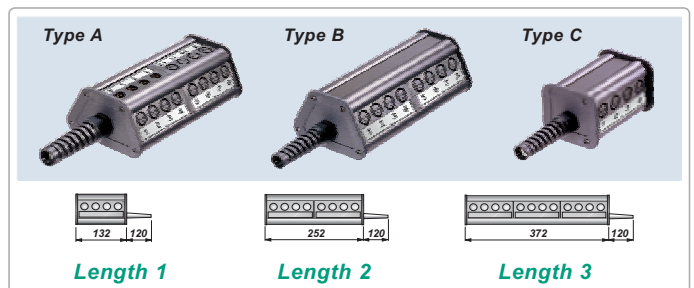


**B** Tighten the bushing of the strain relief.

8 **Assembled Stage Box**



### INFORMATION



**Accessories:** Matching luminescent self-adhesive stickers, labelling groups of 4 connectors in individual row numbers for "IN" and "OUT" are available as accessories.

NEUTRIK AG  
NEUTRIK Zürich AG  
NEUTRIK USA Inc.  
NEUTRIK (UK) Ltd.

LI  
CH  
USA  
UK

T: +423 / 237 24 24 F: +423 / 232 53 93  
T: +41 44 / 736 5010 F: +41 44 / 736 5011  
T: +1 732 / 901 9488 F: +1 732 / 901 9608  
T: +44 1983 / 811 441 F: +44 1983 / 811 439

NEUTRIK Vertriebs GmbH  
NEUTRIK France  
NEUTRIK Tokyo Ltd.  
NEUTRIK Hong Kong Ltd.

DE/NL/AT  
FR  
JP  
HK

T: +49 8131 / 280 890 F: +49 8131 / 280 830  
T: +33 1 / 4131 6750 F: +33 1 / 4131 0511  
T: +81 3 / 3663 4733 F: +81 3 / 3663 4796  
T: +852 / 2687 6055 F: +852 / 2687 6052

www.neutrik.com

