

# ML1 Adapter -20dB



Thank you for buying the ML1 -20dB adapter! This device extends the XLR input range of your Minilyzer up to +40dBu.

Use the adapter only in conjunction with the Minilyzer. The impedances of the adapter are matched for this use only!



**Never stack adapters to measure levels higher than +40dBu!**



**Never connect the adapter to mains voltage!**

## Usage:

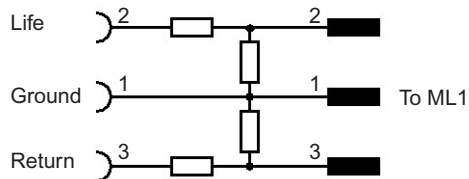
Connect the adapter directly to the XLR input of the Minilyzer, as shown on the picture.

## Technical Specifications:

Attenuation: 20 dB  
Initial accuracy: +/- 0.05dB (aging < 0.02dB @1000h full load)

Input impedance: Bal.: 40kOhm Unbal.: 20kOhm  
Balance mismatch: < 0.2%

Max. input voltage: Bal.: +40dBu 77.5V<sub>RMS</sub> 218V<sub>pp</sub>  
Unbal.: +34dBu 38.9V<sub>RMS</sub> 108V<sub>pp</sub>



Neutrik Test Instruments  
Im alten Riet 102  
9494 Schaan  
Liechtenstein  
Tel. +423 / 239 60 60  
Fax. +423 / 239 60 89  
info@nt-instruments.com

Neutrik Test Instruments  
3520 Griffith Street  
St. Laurent, Quebec H4T 1A7  
Canada  
Tel. +1 / 800 611 6388  
Fax +1 / 514 344 5221  
canada@nt-instruments.com