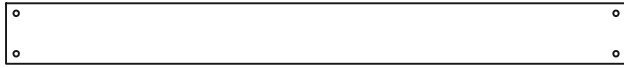
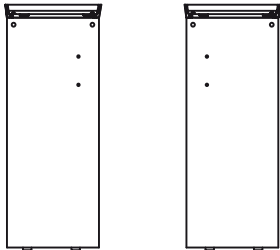


### Scope of delivery





Crossbar

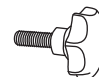


Left and right side panel

 A: 4 × furniture lock M6

 B: 4 × cap screw M6x40

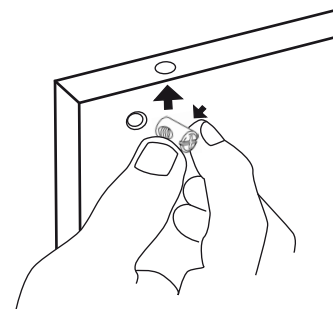
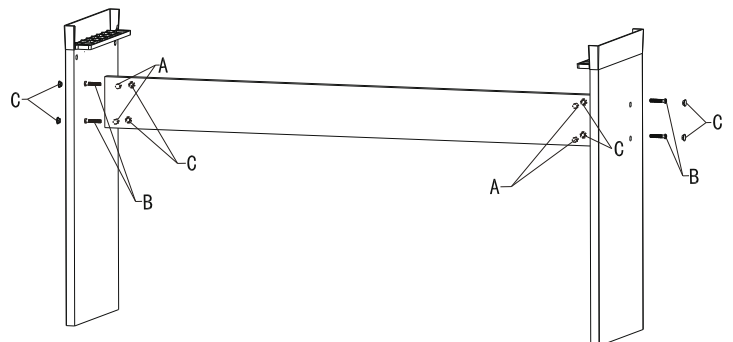
 C: 8 × plastic caps

 D: 4 × hand screws M5x25

### Assembly instructions

For mounting the SP-320 stand, use the supplied furniture locks M6 (A), cap screws (B), plastic caps (C) and hand screws (D). Use a soft padding to prevent damages to the surfaces.

1. Place the furniture locks (A) into the provided blind holes in the cross bar. Make sure that the furniture locks are positioned so that the connecting screws can be inserted and fastened.
2. Place the cap screws (B) into the provided blind holes of the side panels.

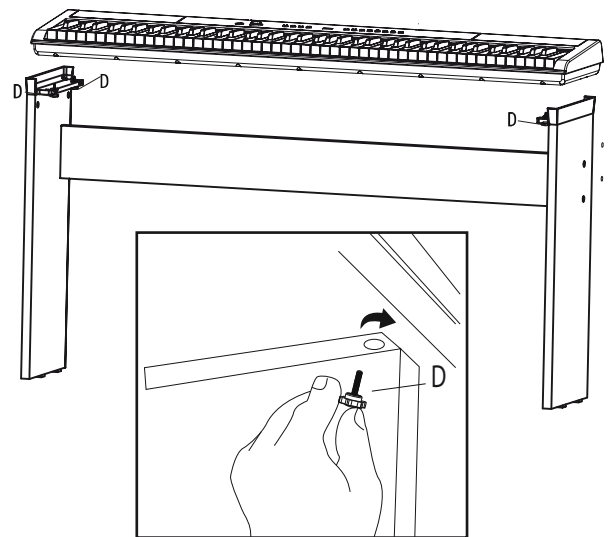
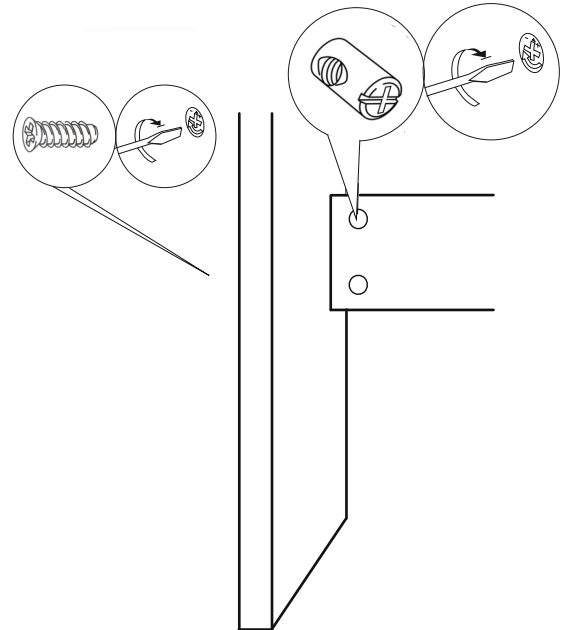


3. Fix the cross bar with the two side panels using two cap screws respectively. Tipp: Use a second screw driver to avoid that the furniture locks distort.

4. Cover the blind holes in the side panels with the plastic caps provided.

5. Place the digital piano onto the angles of the side panels. Level the windings at the bottom of the piano with the bores in the angles.

6. Fasten the digital pianos with two hand screws (D) to the angles of the side panels from below.



### Technical specifications

- Dimensions (W × H × D):  
1270 mm × 655 mm × 260 mm
- Weight: approx. 8 kg



Ensure that plastic bags, packaging, etc. are properly disposed of and are not in the reach of babies and young children. Choking hazard!



The plasticiser contained in the rubber feet of this product may possibly react with the coating of your parquet, linoleum, laminate or PVC floor and after some time cause permanent dark stains. In case of doubt, do not put the rubber feet directly on the floor, but use felt-pad floor protectors or a carpet.



For the packaging, environmentally friendly materials have been chosen that can be supplied to normal recycling. Ensure that plastic bags, packaging, etc. are properly disposed of. Do not just dispose of these materials with your normal household waste, but make sure that they are collected for recycling. Please follow the notes and markings on the packaging.