



LED Theater Spot
250 3200K

LED spotlight

Musikhaus Thomann
Thomann GmbH
Hans-Thomann-Straße 1
96138 Burgebrach
Germany
Telephone: +49 (0) 9546 9223-0
E-mail: info@thomann.de
Internet: www.thomann.de

14.04.2021, ID: 444937 (V4)

Table of contents

1	General information	6
	1.1 Further information.....	7
	1.2 Notational conventions.....	8
	1.3 Symbols and signal words.....	9
2	Safety instructions	12
3	Features	16
4	Installation	18
5	Starting up	22
6	Connections and controls	24
7	Operating	28
	7.1 Starting the device.....	28
	7.2 Main menu.....	28
	7.3 Menu overview.....	32
	7.4 Functions in 3-channel DMX mode.....	33
8	Technical specifications	34

9	Plug and connection assignment.....	37
10	Troubleshooting.....	39
11	Cleaning.....	41
12	Protecting the environment.....	42



LED Theater Spot 250 3200K
LED spotlight

1 General information

This user manual contains important information on the safe operation of the device. Read and follow all safety notes and all instructions. Save this manual for future reference. Make sure that it is available to all persons using this device. If you sell the device to another user, be sure that they also receive this manual.

Our products and user manuals are subject to a process of continuous development. We therefore reserve the right to make changes without notice. Please refer to the latest version of the user manual which is ready for download under www.thomann.de.

1.1 Further information

On our website (www.thomann.de) you will find lots of further information and details on the following points:

Download	This manual is also available as PDF file for you to download.
Keyword search	Use the search function in the electronic version to find the topics of interest for you quickly.
Online guides	Our online guides provide detailed information on technical basics and terms.
Personal consultation	For personal consultation please contact our technical hotline.
Service	If you have any problems with the device the customer service will gladly assist you.

1.2 Notational conventions

This manual uses the following notational conventions:

Letterings

The letterings for connectors and controls are marked by square brackets and italics.

Examples: *[VOLUME]* control, *[Mono]* button.

Displays

Texts and values displayed on the device are marked by quotation marks and italics.

Examples: *'24ch'*, *'OFF'*.

Instructions



The individual steps of an instruction are numbered consecutively. The result of a step is indented and highlighted by an arrow.



Example:

- 1.** ▶ Switch on the device.
- 2.** ▶ Press *[Auto]*.
⇒ Automatic operation is started.
- 3.** ▶ Switch off the device.

1.3 Symbols and signal words

In this section you will find an overview of the meaning of symbols and signal words that are used in this manual.

Signal word	Meaning
DANGER!	This combination of symbol and signal word indicates an immediate dangerous situation that will result in death or serious injury if it is not avoided.
WARNING!	This combination of symbol and signal word indicates a possible dangerous situation that can result in death or serious injury if it is not avoided.
NOTICE!	This combination of symbol and signal word indicates a possible dangerous situation that can result in material and environmental damage if it is not avoided.
Warning signs	Type of danger
	Warning – high-voltage.
	Warning – dangerous optical radiation.

Warning signs	Type of danger
	Warning – suspended load.
	Warning – danger zone.

2 Safety instructions

Intended use

This device is intended for use as an electronic lighting effect by means of LED technology. The device is designed for professional use only and is not suitable for use in households. Use the device only as described in this user manual. Any other use or use under other operating conditions is considered to be improper and may result in personal injury or property damage. No liability will be assumed for damages resulting from improper use.

This device may be used only by persons with sufficient physical, sensorial, and intellectual abilities and having corresponding knowledge and experience. Other persons may use this device only if they are supervised or instructed by a person who is responsible for their safety.



Extend the operating life of the device by regular breaks and by avoiding frequent switching on and off. The device is not suitable for continuous operation.

Safety**DANGER!****Danger for children**

Ensure that plastic bags, packaging, etc. are disposed of properly and are not within reach of babies and young children. Choking hazard! Ensure that children do not detach any small parts (e.g. knobs or the like) from the unit. They could swallow the pieces and choke! Never let children unattended use electrical devices.

**DANGER!****Electric shock caused by high voltages inside**

Within the device there are areas where high voltages may be present. Never remove any covers. There are no user-serviceable parts inside. Do not use the device if covers, protectors or optical components are missing or damaged.

**DANGER!****Electric shock caused by short-circuit**

Always use proper ready-made insulated mains cabling (power cord) with a protective contact plug. Do not modify the mains cable or the plug. Failure to do so could result in electric shock/death or fire. If in doubt, seek advice from a registered electrician.

**WARNING!****Eye damage caused by high light intensity**

Never look directly into the light source.



WARNING!

Risk of epileptic shock

Strobe lighting can trigger seizures in photosensitive epilepsy. Sensitive persons should avoid looking at strobe lights.



WARNING!

Risk of injury caused by falling objects

Make sure that the installation complies with the standards and rules that apply in your country. Always secure the device with a secondary safety attachment, such as a safety cable or a safety chain. Secure the barn door with a safety cable on the spotlight after installation. The safety cable must run outside the barn door and must not interfere with the light emission.



NOTICE!

Risk of fire

Do not block areas of ventilation. Do not install the device near any direct heat source. Keep the device away from naked flames.



NOTICE!

Risk of fire and overheating

The use with closed barn doors can cause fire or overheating in the spotlight. The lifetime of the LEDs will be reduced when using the device with closed barn doors. Otherwise, the integrated thermostat causes a thermally reasonable shutdown. Use the device only with open barn doors.



NOTICE!

Operating conditions



This device has been designed for indoor use only. To prevent damage, never expose the device to any liquid or moisture. Avoid direct sunlight, heavy dirt, and strong vibrations. Only operate the device within the ambient conditions specified in the chapter 'Technical specifications' of this user manual. Avoid heavy temperature fluctuations and do not switch the device on immediately after it was exposed to temperature fluctuations (for example after transport at low outside temperatures). Dust and dirt inside can damage the unit. When operated in harmful ambient conditions (dust, smoke, nicotine, fog, etc.), the unit should be maintained by qualified service personnel at regular intervals to prevent overheating and other malfunction.



NOTICE!

Power supply



Before connecting the device, ensure that the input voltage (AC outlet) matches the voltage rating of the device and that the AC outlet is protected by a residual current circuit breaker. Failure to do so could result in damage to the device and possibly injure the user. Unplug the device before electrical storms occur and when it is unused for long periods of time to reduce the risk of electric shock or fire.



NOTICE!

Possible damage due to installation of a wrong fuse



The use of different types of fuses can cause serious damage to the unit. Fire hazard! Only fuses of the same type may be used.

3 Features

The LED theatre spotlight replaces conventional Fresnel lens spotlights with 1000 W power.

Special features of the device:

- 1 × COB LED, 250 W
- Fresnel lens
- Colour temperature: 3200 K
- Colour rendering index: > 95
- Max. light output: 12730 Lux (2 m, 15° beam angle)
- Beam angle 15° to 52°, variable by motorized zoom via DMX or on the device
- Operation in stand-alone or DMX mode (3 channels)
- Operating via buttons and display on the unit
- Very quiet temperature-controlled fan for quiet operation
- Ideally suitable for use in theatres
- Bracket, mains cable and barn door included

For technological reasons, the light output of LEDs decreases over their lifetime. This effect increases with higher operating temperature. You can extend the service life of the illuminants by providing adequate ventilation and operating the LEDs with the lowest possible brightness.

4 Installation

Unpack and check carefully there is no transportation damage before using the unit. Keep the equipment packaging. To fully protect the product against vibration, dust and moisture during transportation or storage use the original packaging or your own packaging material suitable for transport or storage, respectively.



WARNING!

Risk of injury caused by falling objects

Make sure that the installation complies with the standards and rules that apply in your country. Always secure the device with a secondary safety attachment, such as a safety cable or a safety chain.

Secure the barn door with a safety cable on the spotlight after installation. The safety cable must run outside the barn door and must not interfere with the light emission.



NOTICE!

Risk of overheating

The distance between light output and the illuminated surface must be more than 1.5 m (19.7in).

Provide sufficient ventilation.

The ambient temperature must always be below 40 °C (104 °F).



NOTICE!

Use of stands

When mounting the device onto a stand, ensure that the stand is in a safe and stable position and that the weight of the device does not exceed the maximum permissible load capacity of the stand.



NOTICE!

Possible data transmission errors

For error-free operation make use of dedicated DMX cables and do not use ordinary microphone cables.

Never connect the DMX input or output to audio devices such as mixers or amplifiers.

Mounting options

You can install the unit in hanging or standing position. When in use, the device must always be attached to a solid surface or an approved truss. Use the openings of the bracket provided for mounting.

Always work from a stable platform whenever installing, moving or servicing the unit. In doing so, the area underneath the unit must be cordoned off.

The safety cable must be attached to the bracket.



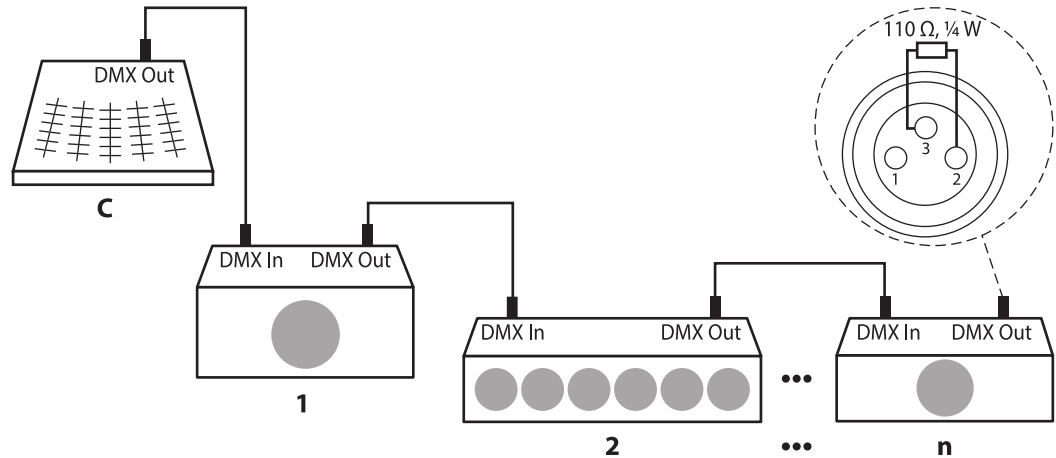
Please note that this device must not be connected to a dimmer.

5 Starting up

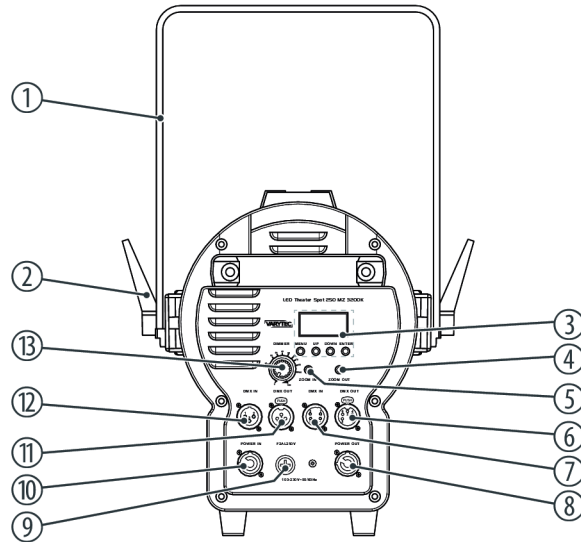
Create all connections while the device is off. Use the shortest possible high-quality cables for all connections. Take care when running the cables to prevent tripping hazards.

Connections in DMX mode

Connect the DMX input of the device to the DMX output of a DMX controller or another DMX device. Connect the output of the first DMX device to the input of the second one, and so on to form a daisy chain. Always ensure that the output of the last DMX device in the daisy chain is terminated with a resistor ($110\ \Omega$, $\frac{1}{4}\text{ W}$).

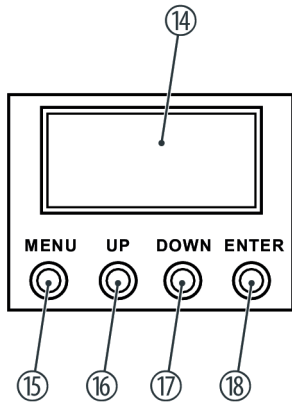


6 Connections and controls



1	Bracket for hanging or installation and for securing the safety cable.
2	Locking screws for positioning the bracket
3	Display
4	<i>[ZOOM IN]</i> Narrows the beam angle
5	<i>[ZOOM OUT]</i> Broadens the beam angle
6	<i>[DMX OUT]</i> DMX output 5-pin
7	<i>[DMX IN]</i> DMX input 5-pin
8	<i>[POWER OUT]</i> Power Twist connector for the voltage supply of a further device
9	Fuse holder

10	<i>[POWER IN]</i> Power Twist connector for the power supply of the device
11	<i>[DMX OUT]</i> DMX output 3-pin
12	<i>[DMX IN]</i> DMX input 3-pin
13	<i>[DIMMER]</i> Rotary control to set the light intensity



14	Display
15	<i>[MENU]</i> Calls up the main menu or a submenu.
16	<i>[UP]</i> Increases the displayed value by one.
17	<i>[DOWN]</i> Decreases the displayed value by one.
18	<i>[ENTER]</i> Confirms a selected value.

7 Operating

7.1 Starting the device

Connect the device to the power supply to start operation. The device is immediately operational and operates in the last mode with the settings last selected.

7.2 Main menu

Menu control

1. ➤ Use *[MENU]*, to open the main menu or to return to the main menu.
2. ➤ Use *[UP]* or *[DOWN]* to select the desired parameter or value.
3. ➤ Confirm the desired parameter or value with *[ENTER]*.
 - ⇒ The selected submenu opens up or the selected value is being accepted.

To return to the previous menu level without changes, press *[MENU]*.

DMX address

Use 'Address' to select the start address channel for the DMX address.

1. ▶ Use *[MENU]* and press *[UP]* or *[DOWN]* to select the submenu 'Address'.
2. ▶ Confirm your selection with *[ENTER]*.
3. ▶ Use *[UP]* or *[DOWN]* to select the desired start address from 1 to 512.
4. ▶ Confirm your selection with *[ENTER]*.
 - ⇒ The selected start address is accepted.

Make sure that this number matches the configuration of your DMX controller.

Dimmer

Use 'Curve' to select one of 3 preset dimmer curves.

1. ➤ Use [MENU] and press [UP] or [DOWN] to select the submenu 'Curve'.
2. ➤ Confirm your selection with [ENTER].
3. ➤ Use [UP] or [DOWN] to select one of three preset dimmer curves ('Curve 1, Curve 2, Curve 3').
4. ➤ Confirm your selection with [ENTER].
⇒ The selected dimmer curve is accepted.

Display	Meaning
'Curve 1'	Dimmer curve with a flat course at the beginning and a steep course at the end
'Curve 2'	Dimmer curve with linear (proportional) course
'Curve 3'	Dimmer curve with a steep course at the beginning and a flat course at the end

Display

Use *'BK Light'* to adjust the idle mode of the display.

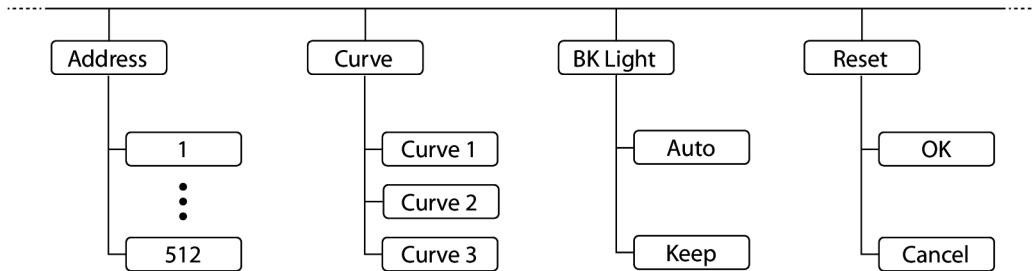
1. ▶ Use *[MENU]* and press *[UP]* or *[DOWN]* to select the submenu *'BK Light'*.
2. ▶ Confirm your selection with *[ENTER]*.
3. ▶ Use *[UP]* or *[DOWN]* to select *'Auto'* to turn off the display automatically. Use *[UP]* or *[DOWN]* to select *'Keep'* to enable the display permanently.
4. ▶ Confirm your selection with *[ENTER]*.
⇒ The selected setting is accepted.

Reset

Use *'Reset'* to reset the values to factory defaults.

1. ▶ Use *[MENU]* and press *[UP]* or *[DOWN]* to select the submenu *'Reset'*.
2. ▶ Confirm your selection with *[ENTER]*.
3. ▶ Use *[UP]* or *[DOWN]* to select *'OK'* to reset the values to factory defaults. Use *[UP]* or *[DOWN]* to select *'Cancel'* to leave the set values unchanged.
4. ▶ Confirm your selection with *[ENTER]*.
⇒ The selected setting is accepted.

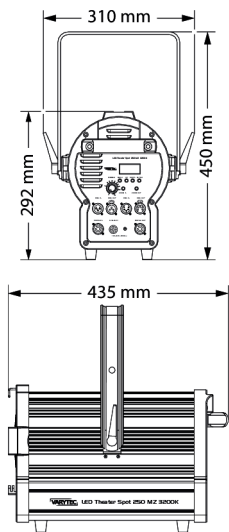
7.3 Menu overview



7.4 Functions in 3-channel DMX mode

Channel	Value	Function
1	0 ... 255	Dimmer (0 % to 100 %)
2	Strobe effect	
	0	LED off
	1 ... 110	Stroboscope effect, increasing speed
	111 ... 245	Stroboscope effect (Burst), increasing speed
	146 ... 255	LED on
3	0 ... 255	Setting the beam angle (15° to 52°)

8 Technical specifications



Light source	1 × COB LED, 250 W	
Light source properties	Colour temperature	3200 K
	Colour rendering index	> 95 CRI Ra
	Light output	12730 Lux (2 m, 15° beam angle)
Optical properties	Beam angle	15° ... 52°
Control	DMX	
Number of DMX channels	3	
Input connections	Power supply	Power Twist socket
	DMX control	XLR chassis socket, 3-pin XLR chassis socket, 5-pin
Output connections	DMX control	Power Twist socket XLR chassis socket, 3-pin

		XLR chassis socket, 5-pin
Power consumption	max. 250 W	
Supply voltage	100 - 240 V ~ 50/60 Hz	
Fuse	5 mm × 20 mm, 2 A, 250 V, fast-acting	
Degree of protection	IP20	
Mounting options	Hanging, standing	
Dimensions (W × H × D)	310 mm × 450 mm × 435 mm	
Weight	10.2 kg	
Ambient conditions	Temperature range	0 °C...40 °C
	Relative humidity	20 %...80 % (non-condensing)

Further information

Optic	Fresnel
LED type	COB
Fanless	No

9 Plug and connection assignment

Introduction

This chapter will help you select the right cables and plugs to connect your valuable equipment so that a perfect light experience is guaranteed.

Please take our tips, because especially in 'Sound & Light' caution is indicated: Even if a plug fits into a socket, the result of an incorrect connection may be a destroyed DMX controller, a short circuit or 'just' a not working light show!

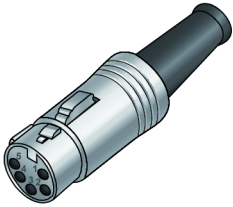
DMX connections



The unit offers a 3-pin XLR socket for DMX output and a 3-pin XLR plug for DMX input. Please refer to the drawing and table below for the pin assignment of a suitable XLR plug.

Pin	Configuration
1	Ground, shielding
2	Signal inverted (DMX-, 'cold signal')
3	Signal (DMX+, 'hot signal')

DMX connections



A five-pin XLR socket serves as DMX output, a five-pin XLR plug serves as DMX input. The drawing below and the table show the pin assignment of a matching coupling.

Pin	Assignment
1	Ground (shielding)
2	Signal inverted (DMX-, 'cold')
3	Signal (DMX+, 'hot')
4	unused / second connection (DMX-)
5	unused / second connection (DMX+)

10 Troubleshooting



NOTICE!

Possible data transmission errors

For error-free operation make use of dedicated DMX cables and do not use ordinary microphone cables.

Never connect the DMX input or output to audio devices such as mixers or amplifiers.

In the following we list a few common problems that may occur during operation. We give you some suggestions for easy troubleshooting:

Symptom	Remedy
The unit does not work, no light.	Check the mains connection and the fuse.
No response to the DMX controller.	1. Check the DMX ports and cables for proper connection.
	2. Check the address settings and the DMX polarity.
	3. Try using another DMX controller.
	4. Check to see if the DMX cables run near or alongside to high voltage cables that may cause damage or interference to DMX interface circuits.

If the procedures recommended above do not succeed, please contact our Service Center. You can find the contact information at www.thomann.de.

11 Cleaning

Optical lenses

Clean the optical lenses, that are accessible from the outside, regularly in order to optimize the light output. The frequency of cleaning depends on the operating environment: wet, smoky or particularly dirty surroundings can cause more accumulation of dirt on the optics of the device.

- Clean with a soft cloth using our lamp and lens cleaner (item no. 280122).
- Always dry the parts carefully.

Fan grids

The fan grids of the device must be cleaned of any contamination, such as dust, etc. on a regular basis. Before cleaning, switch off the device and disconnect mains-operated devices from the mains. Only use pH-neutral, solvent-free and non-abrasive cleaning agents. Clean the unit with a slightly damp lint-free cloth.

12 Protecting the environment

Disposal of the packaging material



For the transport and protective packaging, environmentally friendly materials have been chosen that can be supplied to normal recycling.

Ensure that plastic bags, packaging, etc. are properly disposed of.

Do not just dispose of these materials with your normal household waste, but make sure that they are collected for recycling. Please follow the notes and markings on the packaging.

Disposal of your old device



This product is subject to the European Waste Electrical and Electronic Equipment Directive (WEEE) in its currently valid version. Do not dispose with your normal household waste.

Dispose of this device through an approved waste disposal firm or through your local waste facility. When discarding the device, comply with the rules and regulations that apply in your country. If in doubt, consult your local waste disposal facility.

