





QCon Pro X

MIDI/Audio control surface with motorized faders for production



	<p>CAUTION</p> <p>RISK OF ELECTRIC SHOCK DO NOT OPEN RISQUE DE CHOC ELECTRIQUE NE PAS OUVRIR</p> <p>CAUTION: TO REDUCE THE RISK OF ELECTRIC SHOCK DO NOT REMOVE COVER (OR BACK) NO USER-SERVICEABLE PARTS INSIDE REFER SERVICING TO QUALIFIED PERSONNEL</p> <p>ATTENTION: POUR EVITER LES RISQUES DE CHOC ELECTRIQUE: NE PAS ENLEVER LE COUVERCLE. AUCUN ENTRETIEN DE PIECES INTERIEURES PAR L'USAGER. CONFIER L'ENTRETIEN AU PERSONNEL QUALIFIE.</p> <p>AVIS: POUR EVITER LES RISQUES D'INCENDIE OU D'ELECTROCUTION, N'EXPOSEZ PAS CET ARTICLE A LA PLUIE OU A L'HUMIDITE</p>		 	<p>The lightning flash with arrowhead symbol within an equilateral triangle is intended to alert the user to the presence of uninsulated dangerous voltage within the product's enclosure, that may be of sufficient magnitude to electric shock to persons. Le symbol clair avec point de flèche à l'intérieur d'un triangle équilatéral est utilisé pour avertir l'utilisateur de la présence d'un voltage dangereux non isolé d'ampleur suffisante.</p> <p>The exclamation point within an equilateral triangle is intended to alert the user of the presence of important operating and maintenance (servicing) instructions in the literature accompanying the appliance. Le point d'exclamation à l'intérieur d'un triangle équilatéral est employé pour avertir les utilisateurs de la présence d'instructions importantes pour le fonctionnement et l'entretien (service) dans le livret d'instruction accompagnant l'appareil.</p>
---	---	---	---	---

Important Safety Instructions

1. Read this manual thoroughly before using this unit.
2. Keep this manual for future reference.
3. Take notice of and comply with all warnings included in the user's manual or indicated on the appliance.
4. Follow all instructions included in this manual.
5. Do not expose this unit to rain or moisture. Avoid having water or other liquids spilled on this unit.
6. When cleaning the cabinet or other parts of this appliance, use only a dry or slightly damp soft cloth.
7. Do not block any ventilation openings or interfere with the proper ventilation of this unit. Install in accordance with the manufacturer's instructions.
8. Do not use or store near any heat sources such as radiators, heat registers, stoves, or other heat-producing appliances.
9. Do not interfere with the safety purpose of the polarized or grounding-type plug. A polarized plug has two blades with one wider than the other. A grounding-type plug has two blades and a third grounding prong. These are designated for your safety. If the provided plug does not fit into your outlet, consult an electrician.
10. Protect the power cord from being walked on or otherwise damaged by items placed on or against them. Particular attention should be given to the plugs, receptacles, and the point where the cord exits the appliance.
11. To avoid the risk of electrical shock, do not touch any exposed wiring while the unit is in operation.
12. Only use attachments/accessories specified by the manufacturer.
13. Unplug this unit and all connected electrical equipment during lightning storms or when left unused a long period of time.
14. Refer all servicing to qualified service personnel. Servicing is required when the appliance has been damaged in any way or fails to operate normally.

WARNING: To reduce the risk of fire or electric shock, do not expose this unit to rain or moisture

Contents

Introduction.....	4
What's in the package?.....	4
Features.....	5
Top Panel Layout.....	7
Rear Panel Layout.....	12
Getting Started.....	13
Cubase.....	15
Nuendo.....	16
Logic Pro.....	17
Samplitude.....	18
Bitwig.....	20
Reason.....	21
Reaper.....	22
Studio One.....	23
Abelton Live.....	24
Pro Tools.....	25
iMap™ Software for Mac OS X.....	27
Installing iMap™ Software for Windows.....	28
Assigning DAW Mode (Mackie Control/HUI) or Defining MIDI Functions with iMap™.....	30
Assigning DAW Mode (Mackie control/HUI) Using iMap™.....	31
Assigning MIDI Messages in User-Defined Mode Using iMap™.....	33
Control Element Setup in User-Defined Mode.....	35
Other Functions in iMap™.....	37
Firmware upgrade.....	38
Restore the factory default settings.....	40
Specifications.....	41
Services.....	42

Introduction

Thank you for purchasing the ICON Qcon Pro X Midi/Audio control surface. We sincerely trust this product will provide years of satisfactory service, but if anything is not to your complete satisfaction, we will endeavor to make things right.

In these pages, you'll find a detailed description of the features of the Qcon Pro X, as well as a guided tour through its front and Rear panels, step-by-step instructions for its setup and use, and full specifications.

You'll also find a warranty card enclosed---please don't forget to fill it out and mail it so that you can receive online technical support at: www.iconproaudio.com. And so we can send you updated information about this and other ICON products in the future. As with most electronic devices, we strongly recommend you retain the original packaging. In the unlikely event the product must be returned for servicing, the original packaging (or reasonable equivalent) is required.

With proper care and adequate air circulation, your Qcon Pro X will operate without any trouble for many years. We recommend that you record your serial number in the space provided below for future reference.

Please write your serial number here for future reference:

Purchased at:

Date of purchase:

What's in the package?

- Qcon Pro X USB-MIDI Controller x 1pc
- CD x 1
 - App software – iMap (Mac & Windows)
 - User manual & QSG
 - DAW software – Samplitude Pro X2 Silver ICON edition
- Quick Start Guide x 1
- USB2.0 Cable x 1
- AC adaptor x 1pc

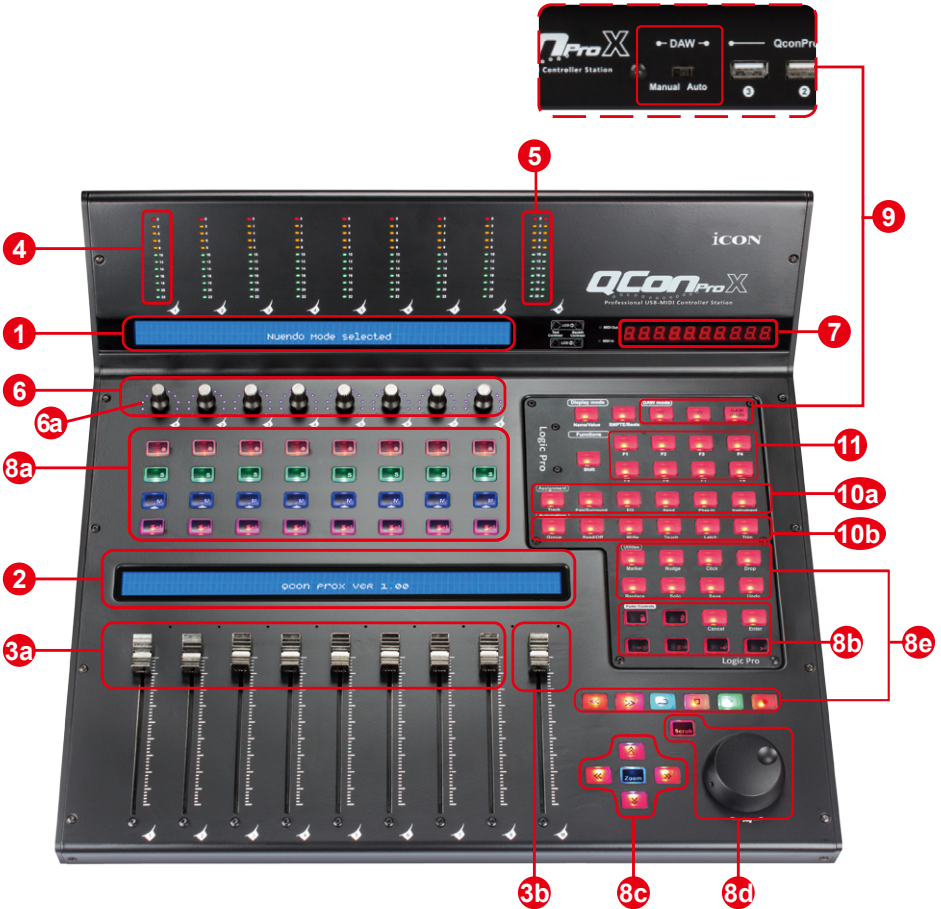
Features



- 8 touch-sensitive motorized channel faders with 10-bit resolution
- 1 touch-sensitive motorized fader for master channel with 10-bit resolution
- 12-segment LED level metering bridge equipped for channel (mono) and master channel (stereo) level metering (Angled and located at the top for easy reading)
- 8 x dual function encoder knobs (Enter & rotate)
- The multi-colour surround LED display will change colour according to the controlling parameter for easy control (Cubase only)
- 11-segment LED surrounding the encoders to indicate the rotating position.
- Large dual backlit LCD displays show channel name (lower LCD) and different control parameters (upper LCD) for each channel
- 12-segment LED display showing time location of your project in either SMPTE or BBT format.
- Jog wheel shuttle for fast search and control
- Illuminated buttons for each channel including Rec-enable, Solo, Mute, Select and Monitor
- 6 illuminated transport buttons including Play, Stop, Rec, Rewind, Fast forward and Loop
- Illuminated zoom key with 4 direction keys
- 9 illuminated assignable MIDI function buttons (Depended on DAW)
- Expandable to 32-channels control surface with 3 units of Qcon Pro XS
- 3 x USB expansion ports are included
- Different expansion control units (modules) such as joystick, extra buttons, or knobs will be available (optional)
- User A & User B RCA connectors for connecting with pedals
- Class-compliant with Windows XP, Vista (32-bit), Windows 7 (32-bit & 64-bit), Windows 8 (32-bit & 64-bit), Windows 10 (64-bit) and Mac OS X (IntelMac)
- USB 2.0 high speed connectivity

- Mackie control build-in for Cubase, Nuendo, Samplitude, Logic Pro, Reaper, Studio One, Bitwig, Reason and Ableton Live.
- Mackie HUI protocol build-in for Pro Tools
- Hardware switch for DAW auto-detect mode or DAW manual-select mode
- Optional DAW aluminium panels are available including Cubase/Nuendo, Samplitude, Logic Pro, Reaper, Studio One, Bitwig, Reason, Ableton Live, and Pro Tools to trigger corresponding DAW settings in DAW auto-detect mode
- Different DAW PVC overlay are included - Cubase/Nuendo, Samplitude, Logic Pro, Reaper, Studio One, Bitwig, Reason, Ableton Live, and Pro Tools
- iMap - Self midi mapping software is provided for user-defined mode (MIDI Learn)
- Firmware upgrade available simply via USB connection and iMap software.
- Superior build quality and robust metal casing with Kensington lock port
- 12V/2.5A power adapter included

Top Panel Layout



Note: Function operates slightly difference between DAWs. Please refer to your DAW manual for each function and overlap the provided labeling template according to your current using DAW. The following description is based on the functions that operate in Apple Logic Pro.

1. Upper LCD Display

The two-line backlit LCD display shows the parameter values as you adjust them and also provides feedback about channel selections, operating modes, and more.

2. Lower LCD Display

The two-line backlit LCD display shows the channel name.

3a. Channel faders

The eight 100mm motorized faders are generally used for controlling the track volume of your DAW. Depending on your DAW, you may use the “Flip” button to

switch the function of these faders to change other settings. They are all touch sensitive to allow override automation the moment you touch a fader. Also, they are motorized; they will automatically move to reflect the current level of the selected channels in your DAW application. Any automation recorded in a project will be reflected by the fader positions. Any parameter adjustments made with these faders will be displayed directly above on the LCD display (upper LCD).

3b. Master fader

This 100mm motorized fader operates the same as the other 8 faders. It controls your DAW software's master channel fader. Any parameter adjustments made with this fader will be displayed directly above on the LCD display (upper LCD).

Note: Except Pro Tools – Pro Tools software is designed in such a way that the fader next to your last channel fader always acts as the master channel fader.

4. Channel level metering (mono)

The 12-led showing the associated channel level.

5. Master channel metering (stereo)

The 12 x 2-LCD showing the master channel level.

6. Dual Function Encoders with Multi-Colour Surround LED

The dual functioned encoder acting as a push-button and a rotary control. When an encoder is pressed, it may be used to change modes of operation or to change what appears in the display above the channel strips. When an encoder is rotated, depending on its assigned function, it can be used to adjust a channel's pan, send level, or plug-in parameters.

6a. Encoder LED

The 11-LED surrounding the encoder lights up to indicate the relative position of the rotation without having to look at your computer. On Cubase, the colour of the surround LED will change according to the controlling parameter.

7. Time display

This display shows the time location of your project in either SMPTE or BBT format.

8. Control buttons

8a) Recording channel control buttons section

REC buttons - Activate and deactivate the recording state of the associated channel. The switch will light red when the channel is armed.

SOLO buttons - Turn On and Off the solo state of the associated channel. The switch will light green when the channel solo state is on and other channels will be muted. You could solo multiple channel by pressing SOLO buttons on additional channels.

MUTE buttons - Activate and deactivate the mute state of the associated channel. The switch will light blue when the channel is muted.

SEL buttons - The SEL buttons activate the associated channels in the DAW software in order to perform a specific operation (for example, when adjusting EQ with the ASSIGNABLE ENCODERS, the SEL switch will be used to choose the channel you want to adjust). When a channel is selected, the associated SEL switch's red LED will light up.

8b) Motorized fader control buttons section

LOCK button -	Activate to lock all motorized faders.
FLIP button -	Press the FLIP button to swap the parameter settings of the motorized faders and the rotary encoder knobs.
UP button -	Shift “one” channel up for all faders (except the master channel).
DOWN button -	Shift “one” channel down for all faders (except the master channel).
BANK UP button -	Shift “eight” channels up for all faders (except the master channel).
BANK DOWN button -	Shift “eight” channels down for all faders (except the master channel).
Cancel button -	Activate DAW cancel function.
Enter button -	Activate DAW enter function.

8c) Zoom control buttons section

ZOOM button - The ZOOM button is typically used in conjunction with the ARROW buttons described below to zoom in and out within windows in the DAW application.

UP button - The UP button is used to navigate (up movement) through the Graphical User Interface (GUI) of the DAW application. Or zoom in vertically when used in conjunction with Zoom function.

DOWN button - The DOWN button is used to navigate (down movement) through the Graphical User Interface (GUI) of the DAW application. Or zoom out vertically when used in conjunction with Zoom function.

LEFT button - The LEFT button is used to navigate (left movement) through the Graphical User Interface (GUI) of the DAW application. Or zoom in horizontally when used in conjunction with Zoom function.

RIGHT button - The RIGHT button is used to navigate (right movement) through the Graphical User Interface (GUI) of the DAW application. Or zoom out horizontally when used in conjunction with Zoom function.

8d) Jog wheel section

Jog wheel - The jog wheel is used for various purposes specific to the DAW application, including shuttle and scrubbing functions.

Scrub button - The SCRUB button is typically used in conjunction with the jog wheel to scrub selected audio tracks for editing and auditioning purposes.

8e) Transport control buttons section

PLAY button - Activate the play function of the DAW.

STOP button - Activate the stop function of the DAW.

REC button - Activate the record function of the DAW.

REWIND button - Activate the rewind function of the DAW.

FAST FORWARD button - Activate the fast forward function of the DAW.

LOOP button - Activate the loop function of the DAW.

Marker button - Toggle small Marker mode.

Nudge - Toggle small Nudge mode.

Click - Toggle playback or record metronome click.

Drop - Toggle Drop.

Replace - Toggle Replace.

Solo - Toggle track solo (of selected track).

Save - Activate DAW save function.

Undo - Activate DAW undo function.

9. DAW Selector section

There is an “auto-detect/manual select” switch located on the back of QconPro X.

Switch to Auto (Auto-Detect mode)

QconPro X will detect which DAW aluminium panel is installed automatically and trigger the settings for that DAW. For example, if the Logic Pro™ aluminium panel is installed on QconPro X, it will automatically load the Logic Pro settings.

(*Tip:* Optional DAW panels are available for different DAW's including: Nuendo/Cubase, Samplitude™, Abelton Live™, Logic Pro™, Reaper™, Bitwig™, Studio One™, Reason™ and Pro Tools™.)

Switch to Manual (Manual-Select mode)

By selecting the correct DAW mode, QconPro X will automatically trigger the selected DAW settings and works seamlessly with that DAW.

<< / >> buttons - These arrow buttons are used to scroll through the DAW list. The name of the DAW will display on the LCD.

DAW button - Press to enter the DAW selection.

To change your Qcon Pro X DAW mode, turn off and on the power switch to enter the DAW selection mode. Select your desired DAW from the list with the “<<” / “>>” buttons.

(Tip: DAW button could not be activated if a DAW software is running.)

(Tip: Qcon Pro X will memorise your last selected DAW mode and re-enter the same mode a few seconds after it has been switched on. (i.e. DAW mode selection is not needed if the last mode is being used.)

(Note: If “Auto mode” is switched on, <</>> & DAW buttons will be ineffective.)

(Note: We will update Qcon ProX firmware from time to time to support additional DAW apart from the current existing list. Please check our official website to download and upgrade your Qcon ProX firmware).

10. Sub-control buttons

This section on control buttons varies depending on which DAW is enabled. Please refer to the text on the PVC overlay or the installed DAW aluminium panel. The explanation below is based on Logic Pro.

10a) Assignment section

TRACK button - Activate the track parameters of the software.

PAN/EQ/Send/Plug-in/Instrument buttons - These buttons are used to activate the corresponding effect function of the DAW. They are typically used in conjunction with the rotary encoder knobs. Press the button, its light will turn on, and then rotate the rotary encoder knob to adjust the value, which will display on the LCD directly above.

10b) Automation section

GROUP - Press to enter “Group” edit mode.

READ/Off button - Press the READ button to activate the read function of the current audio track.

WRITE button - Press the WRITE button to activate the write function of the current audio track.

TOUCH button - Press to set selected track’s automation to Touch.

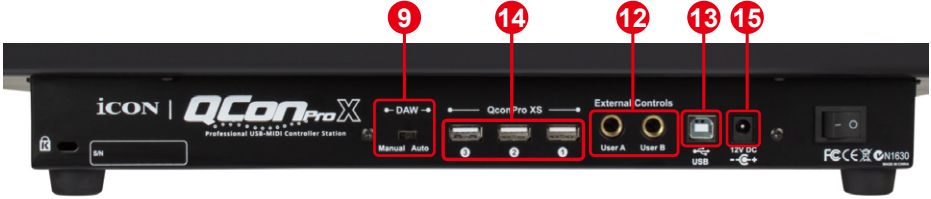
LATCH - Press to set selected track’s automation to Latch.

TRIM - Currently unassigned.

11. User-defined control buttons

This section of control buttons is user-defined in Mackie control mode (HUI mode). You may set their parameters according to your personal needs. PVC labeling mask is included for noting the set parameters.

Rear Panel Layout



12. User A / User B RCA connectors

These RCA connectors are able to connect to foot pedals to activate your selected functions. To set their parameters, select USER A and USER B parameters at Mackie control mode.

13. USB port

Connect your Qcon Pro X to your Mac/PC via this USB port.

14. 3 x Extension ports

Connect your extension unit such as QconProXS to these ports.

9. Auto/Manual switch

Switch to select trigger DAW mode automatically or manually. For detail, please refer to P.13.

15. 12V/2.5A power adaptor

Connect the provided power adaptor here.
(Note: Qcon ProX is not able to work without the provided power adaptor connected. The USB bus power is not able to provide sufficient power supply for Qcon ProX.)

Getting Started

Connecting Your QconPro X Controller

1. Connect the QconPro X to your Mac/PC via the USB port

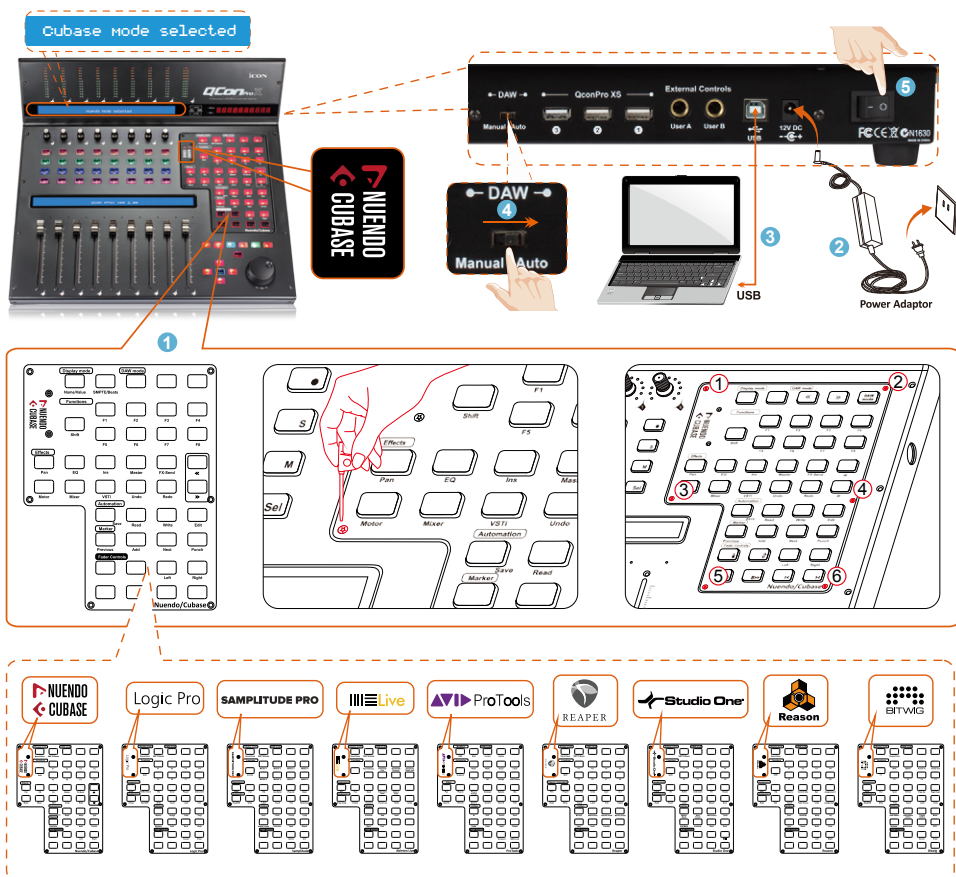
Choose a USB port on your Mac/PC and insert the wide (flat) end of the USB cable. Connect the cable's other end to the QconPro X. Your Mac/PC should automatically "detect" the new hardware and notify you that it is ready to use.

2. Select the DAW at QconPro X.

To select DAW mode, you may use automatic or manual select mode. There is an "Auto/Manual" switch located on the back of the QconPro X. Switch to "Auto" for automatic mode and "Manual" if you want to select DAW manually according to the following steps:

2.1 For Auto mode

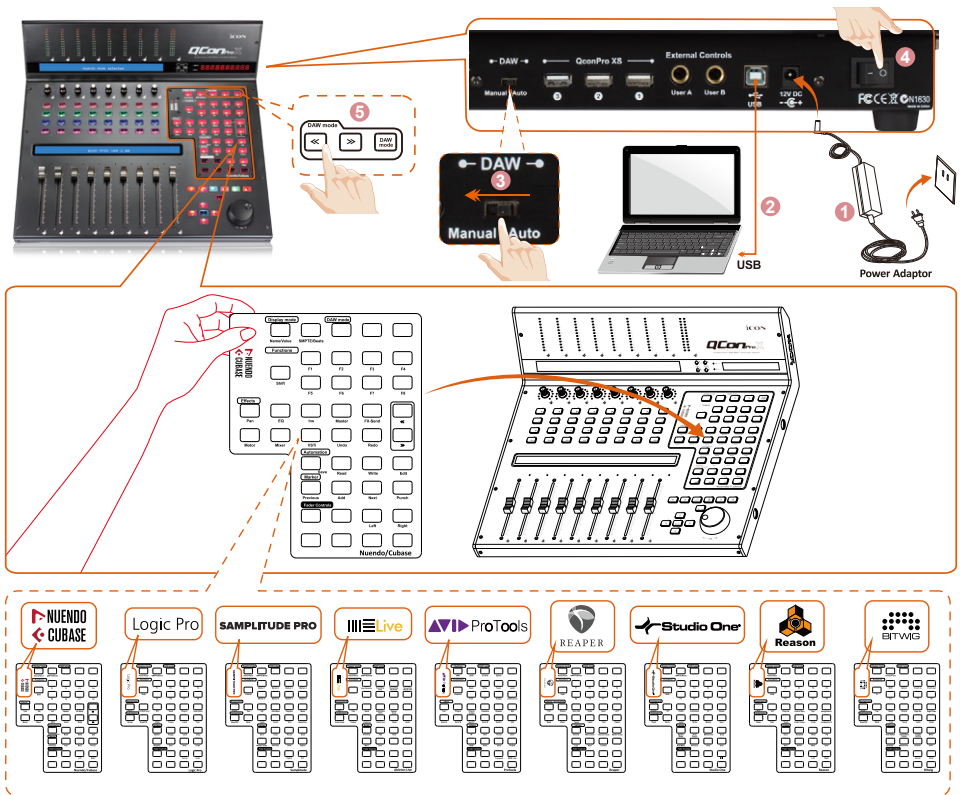
If you have switched QconPro X to "Auto" mode. Once you turn on the power switch, QconPro X will trigger the DAW setting according to your installed DAW aluminium panel. You do not need to select anything.



2.2 For Manual mode

If you have switched QconPro X to “Manual” mode. Once you turn on the power switch, the LCD will display a message asking you to select DAW mode. Press <</> to scroll through the DAW list and press “DAW” to confirm the selection.

Tip: QconPro X will memorise your last selected DAW mode and re-enter the same mode a few seconds after it has been switched on. (i.e. DAW mode selection is not needed if the last mode is being used.)



3. Setup your DAW

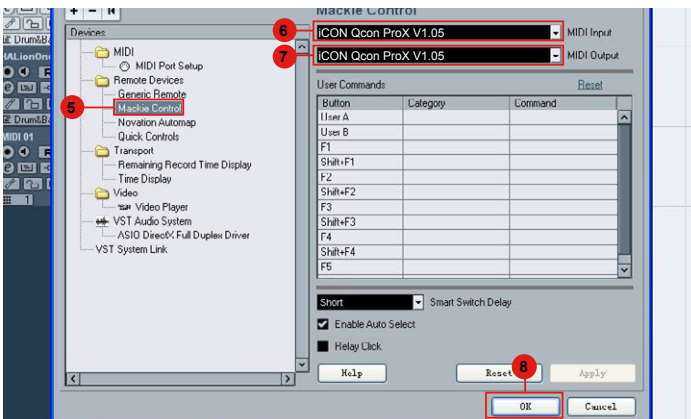
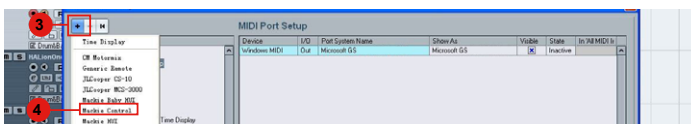
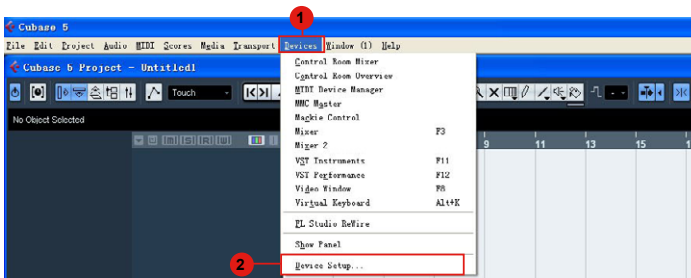
The QconPro X has built-in Mackie Control and HUI protocol, which will save you considerable trouble in setting up the device at your DAW. Simply add the “Mackie Control” or “HUI” device under the “MIDI Controller” on your software. After the Mackie Control or HUI device has been added, select QconPro X controller as your MIDI input and output device in your DAW.

For the software below, please use Mackie Control
Nuendo/Cubase™, Logic Pro™, Samplitude, Bitwig™, Reason™, Reaper™, Studio One™ and Ableton Live™.

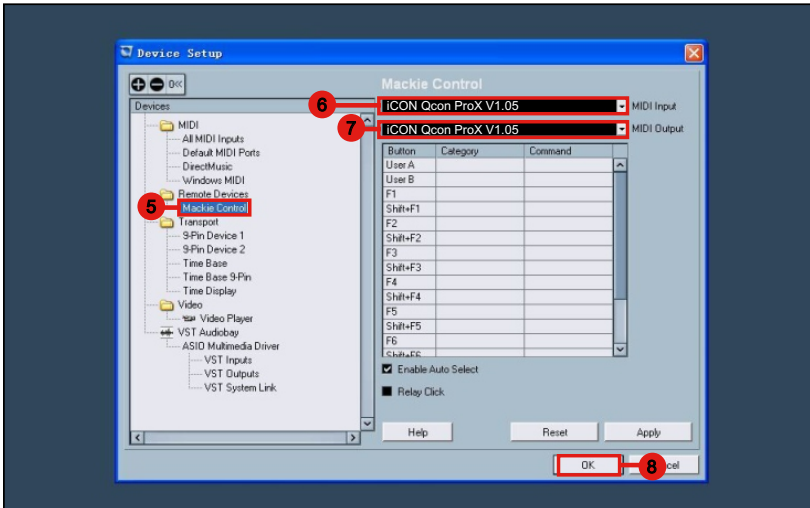
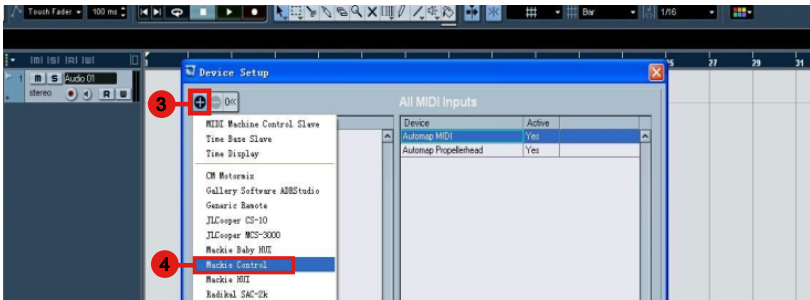
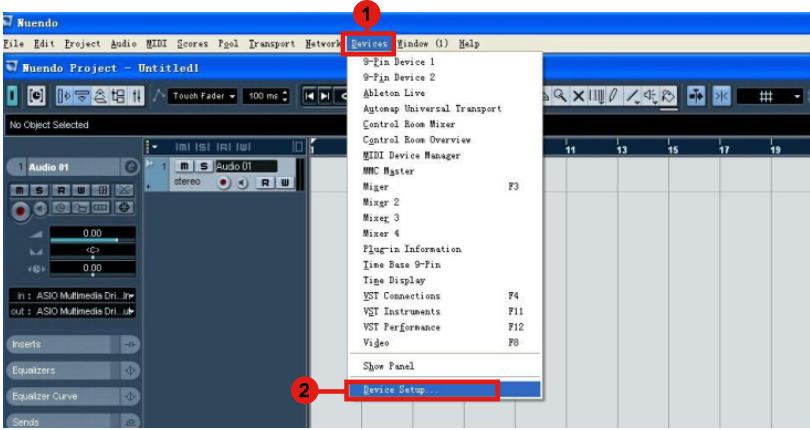
or the software below, please use HUI
Pro Tools™.

*(Tip: You may also refer to our website at www.iconproaudio.com, where you'll find set up illustrations for different DAW's in each controller (QconPro X) product page's “Setup demo” section.
For DAW's not on our setup demo list, please refer to your software user manual for hardware setup.)*

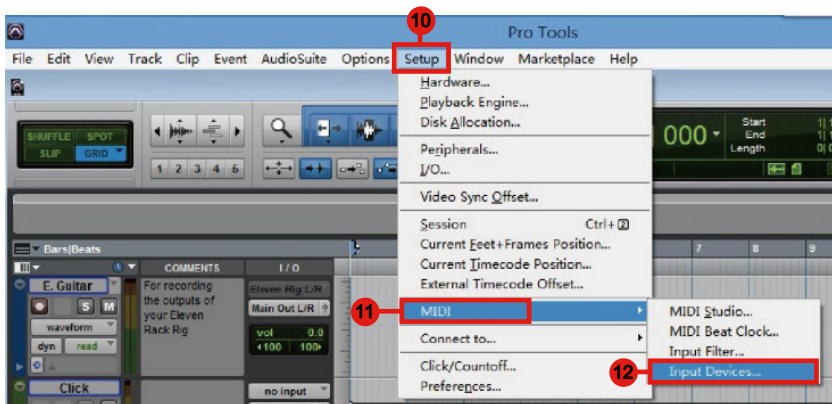
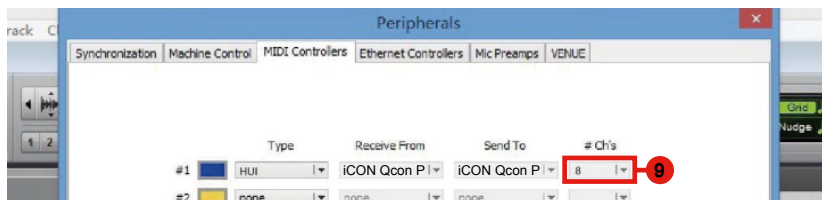
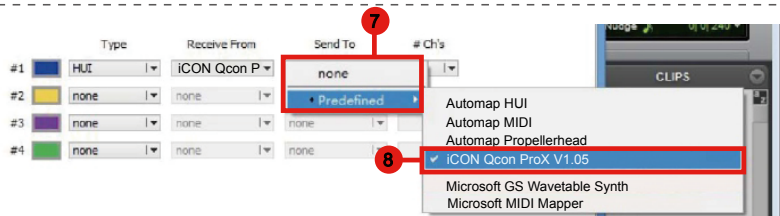
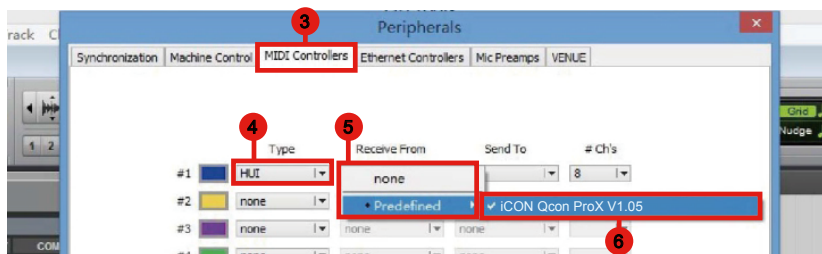
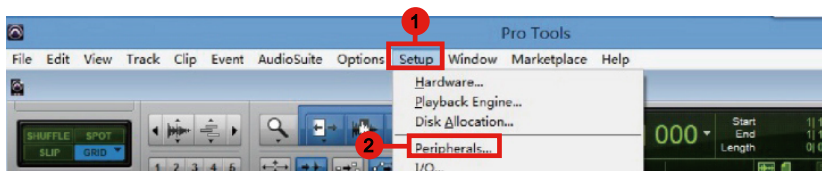
Cubase

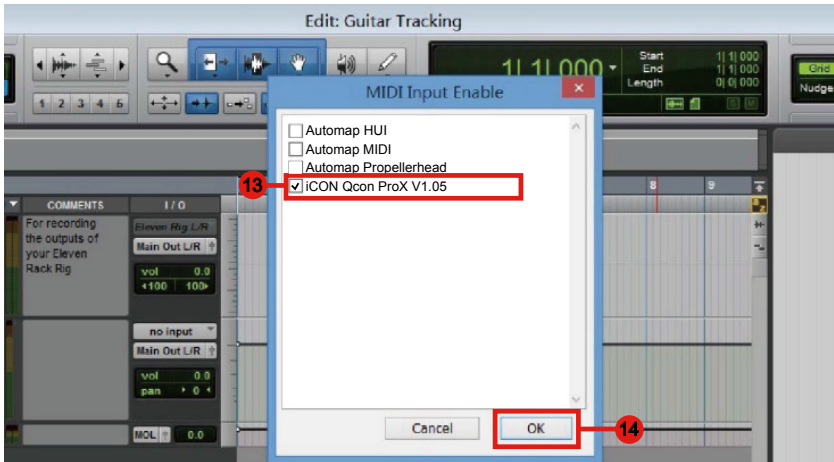


Nuendo

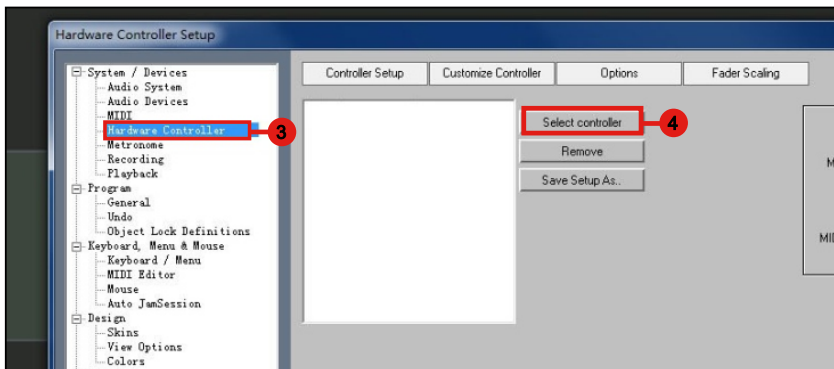
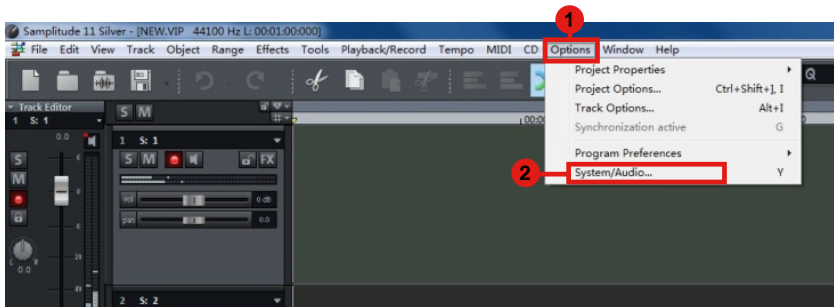


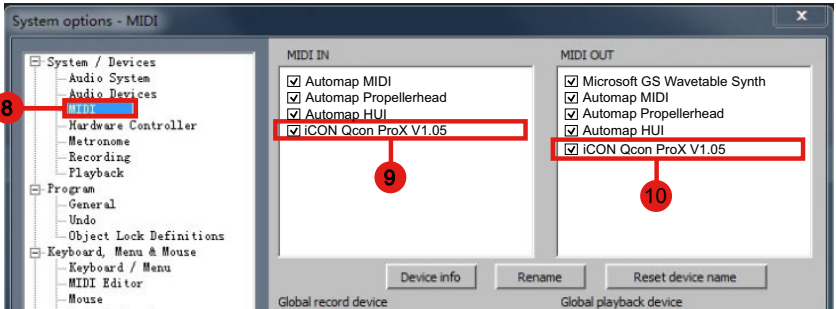
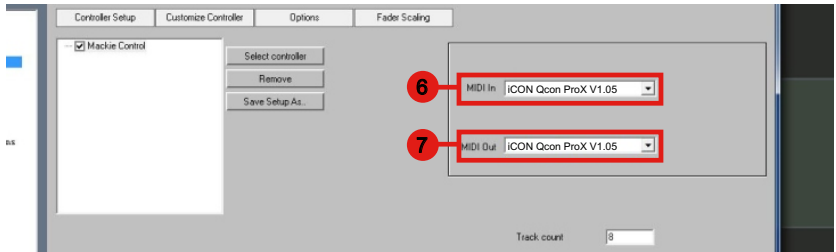
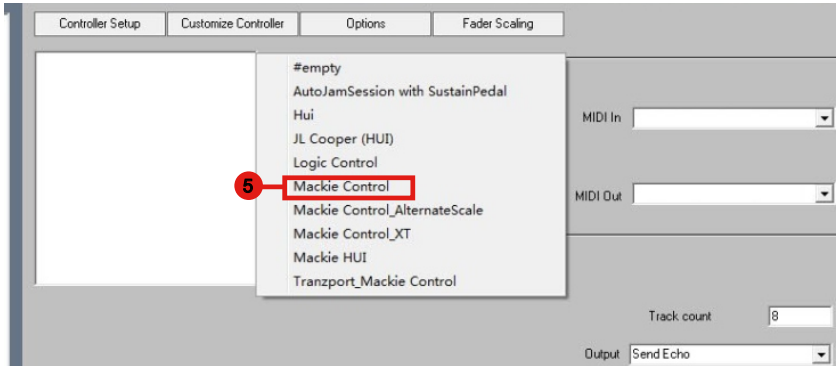
Logic Pro

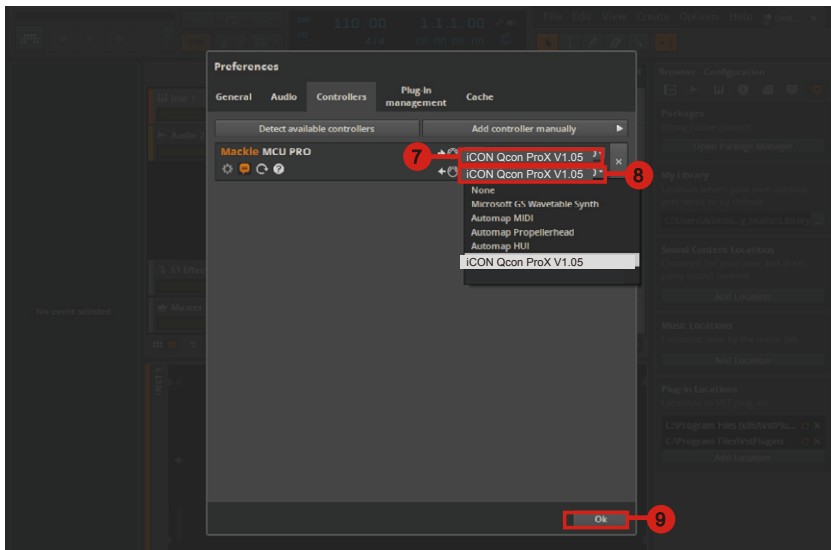
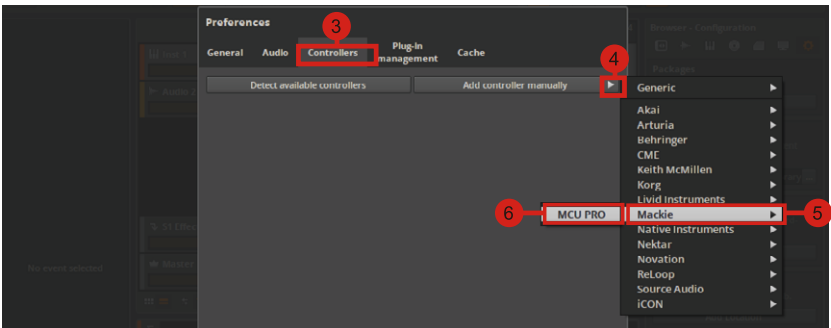
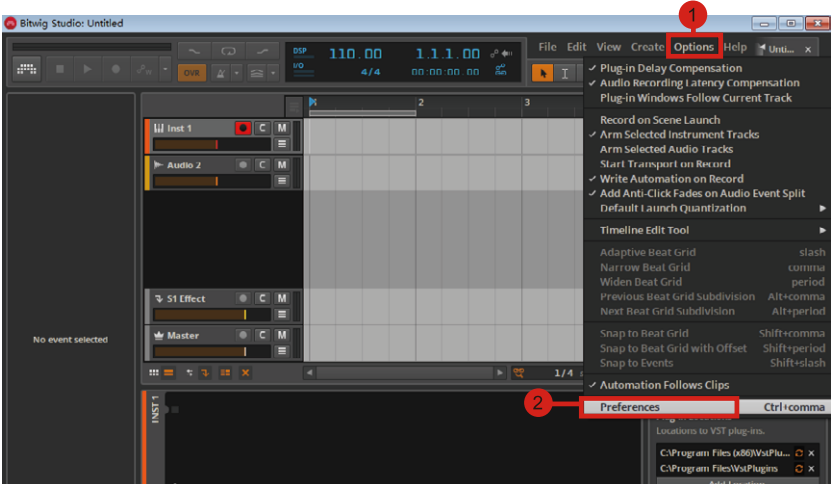




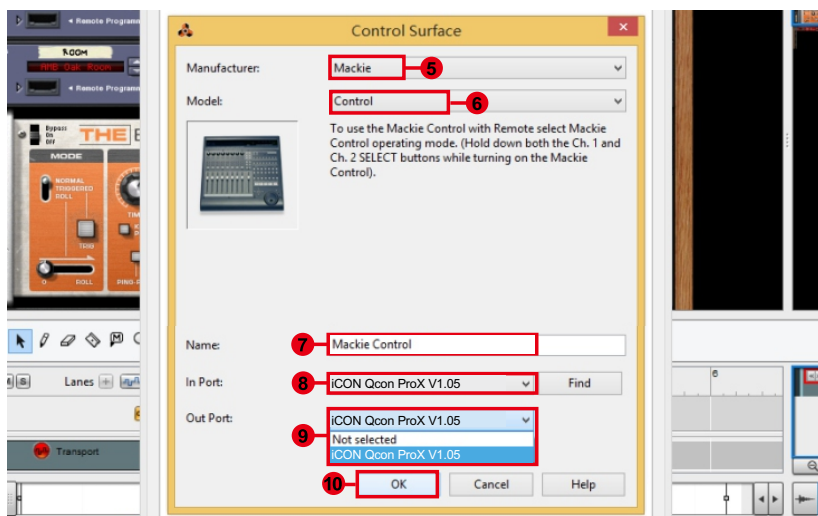
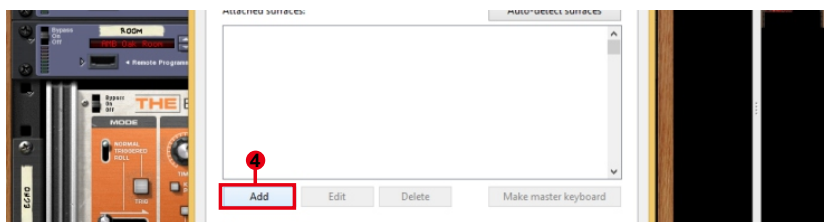
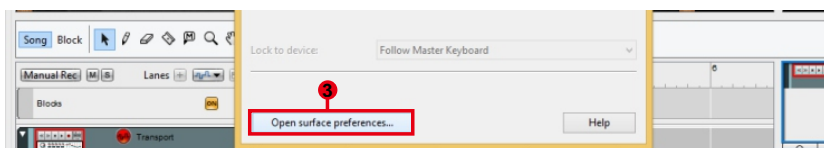
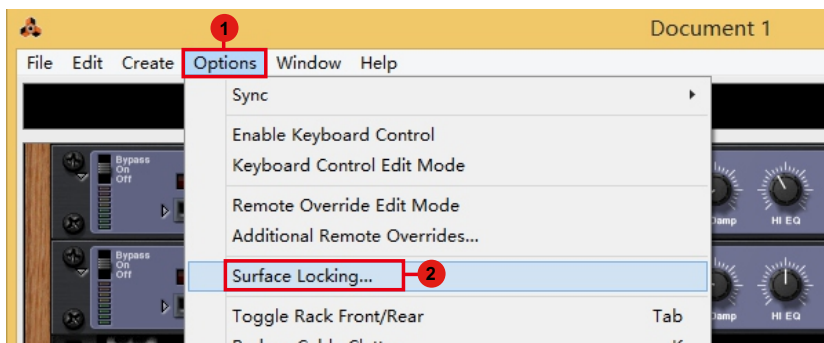
Samplitude



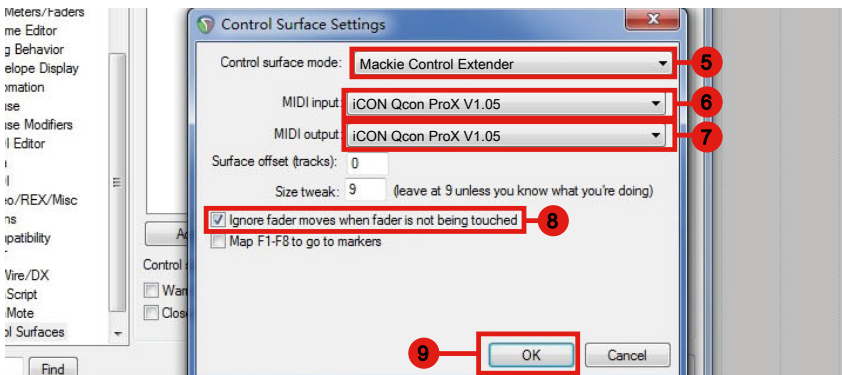
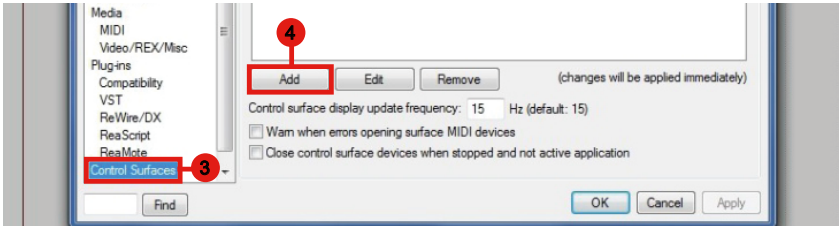
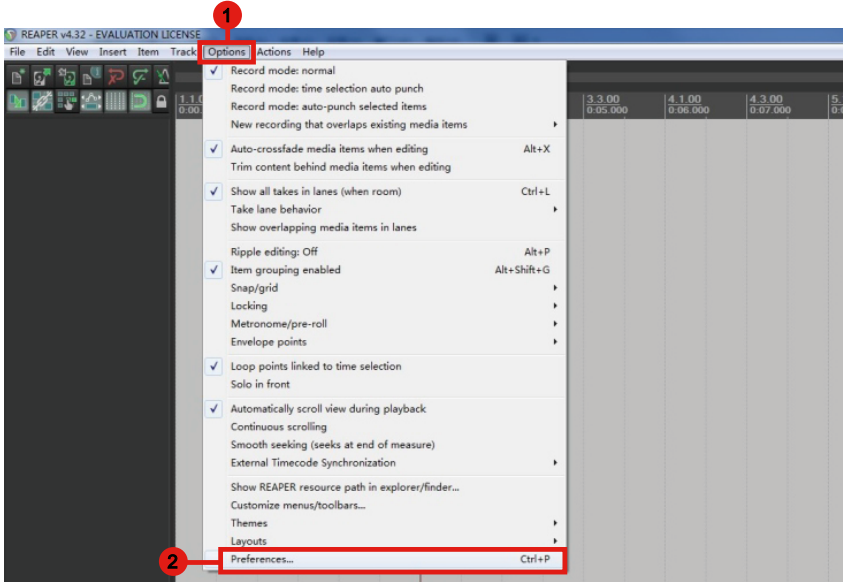




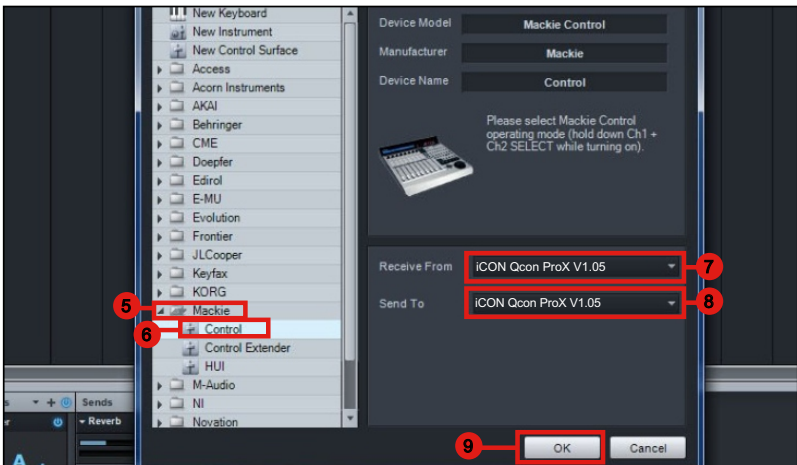
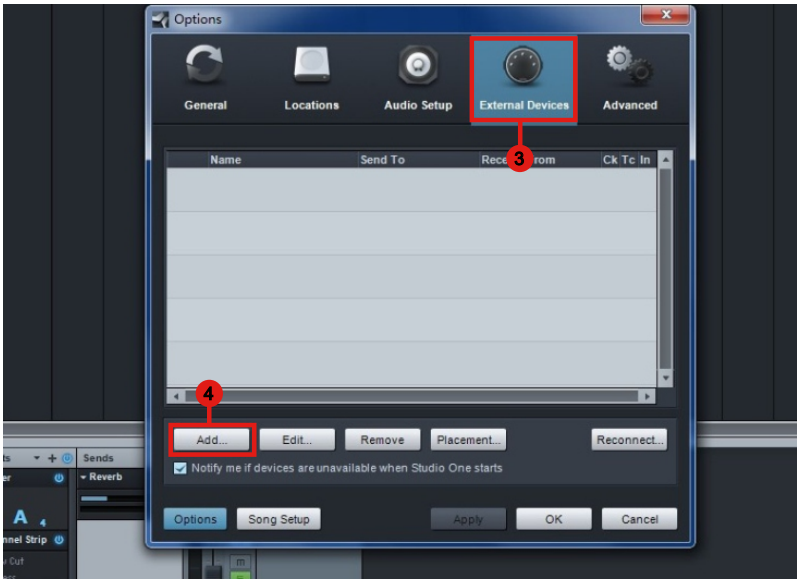
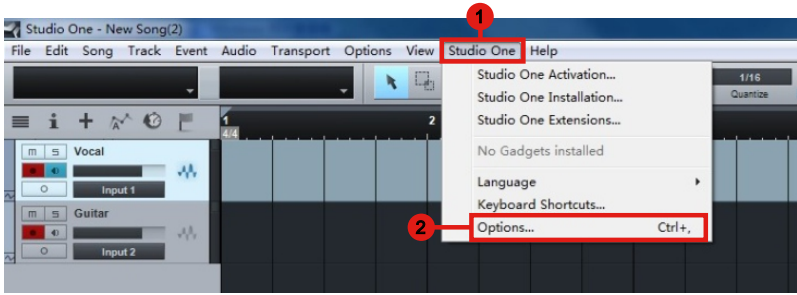
Reason



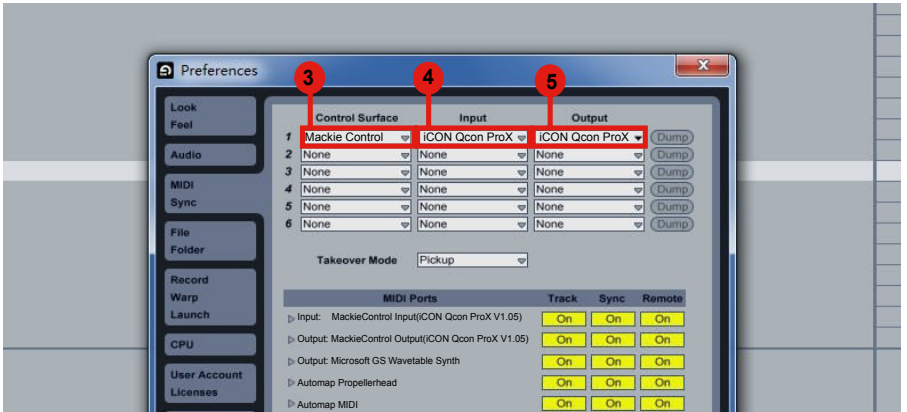
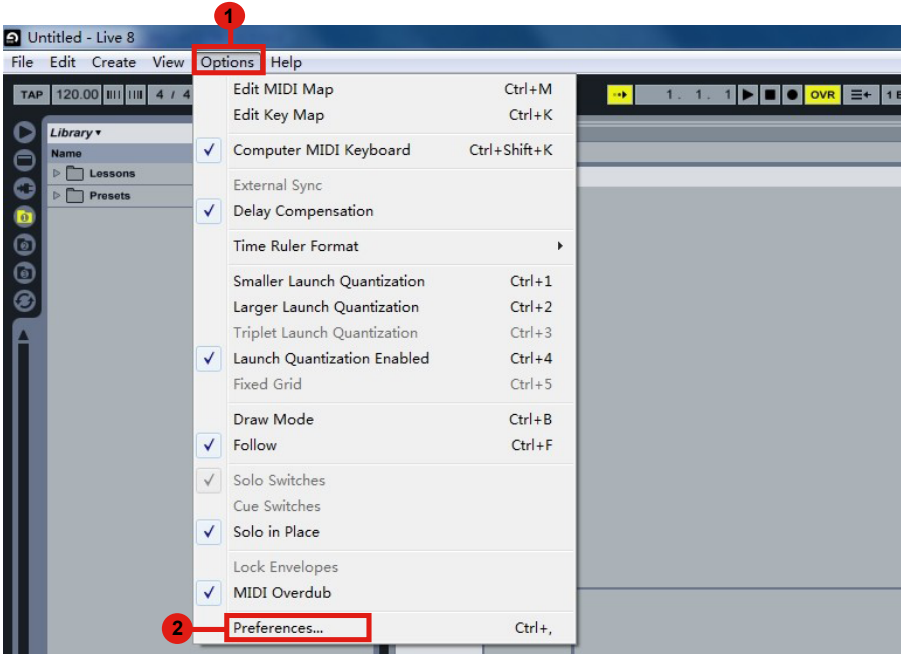
Reaper



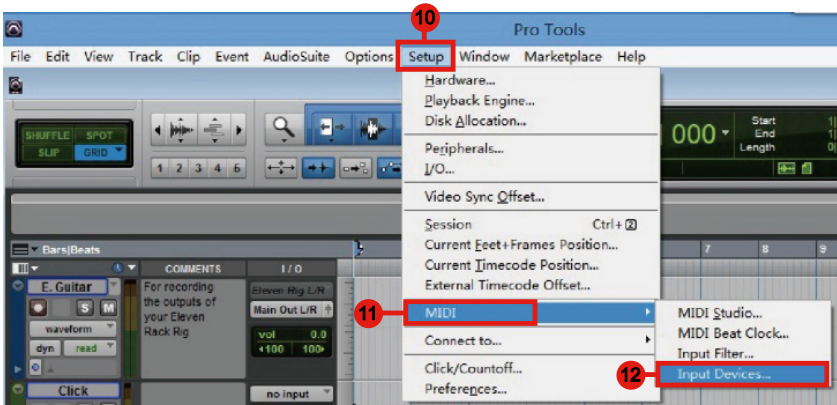
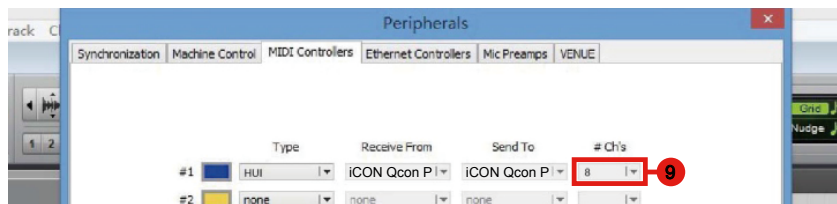
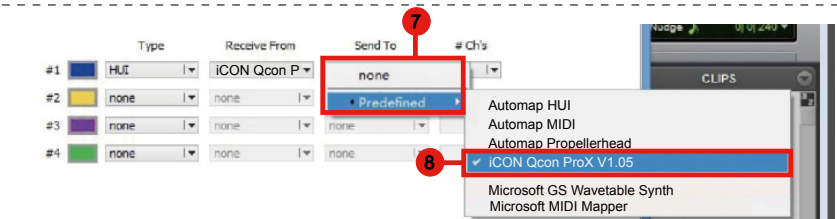
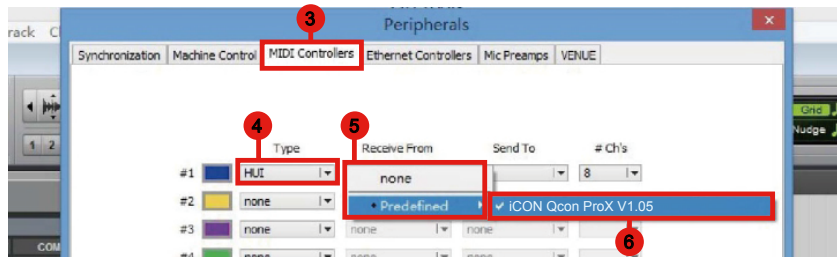
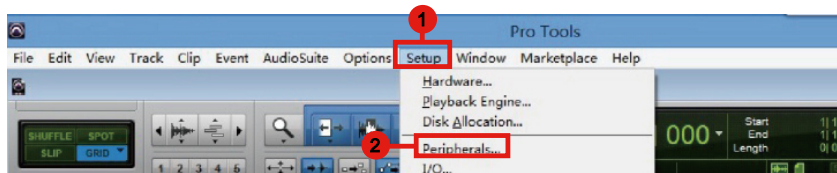
Studio One

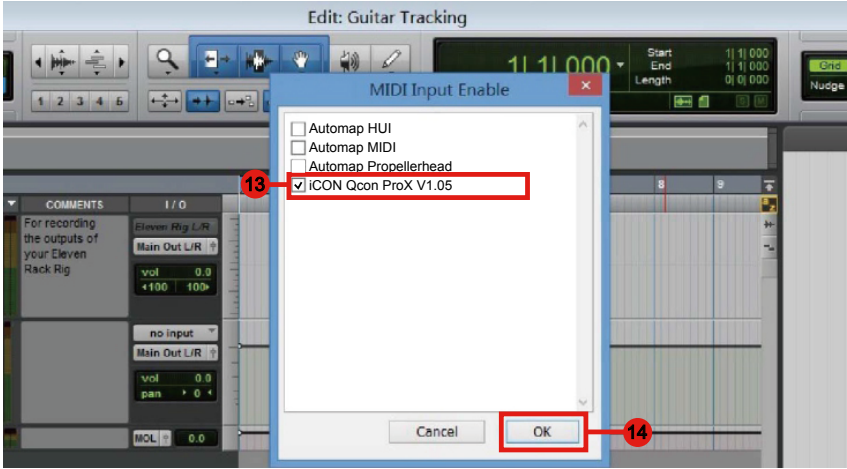


Abelton Live



Pro Tools

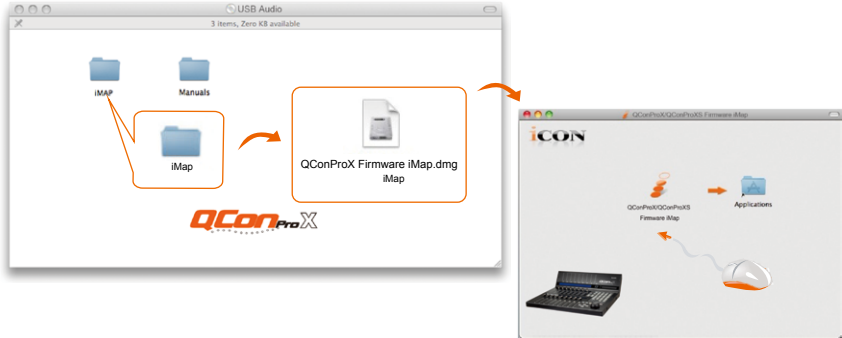




iMap™ Software for Mac OS X

Please follow the procedures below step-by-step to launch your iMap™ software to Mac OS X.

1. Insert the Utility CD in your CD-Rom and double click “QconPro X iMap” icon.



Tip: By “drag and drop” the “QconPro X” icon into the “Applications” folder, you could create a “iMap” shortcut on your Mac’s desktop.

Installing iMap™ Software for Windows

Please follow the procedures below step-by-step to install your iMap™ software.

1. Turn on your PC.

2. Insert the Utility CD in your CD-Rom.

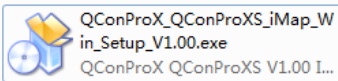
After you have inserted the CD into your CD-Rom, an installation screen should appear as shown in diagram 1; click "Install".

(Note: If the Installation screen do not appear automatically. Go to the CD folder and double click "Setup".)

(Note: If the file was downloaded from our website, please unzip the file and click the setup icon.)



Diagram 1



3. Choose Install Location

Choose your preferred install location for iMap™ or use the default location and click "Next".

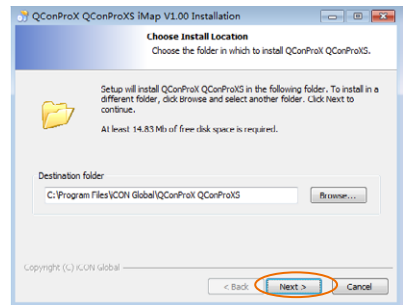


Diagram 2

4. Select shortcut

Select the start menu folder in which you would like to create the iMap™ shortcut. Then click "Next".

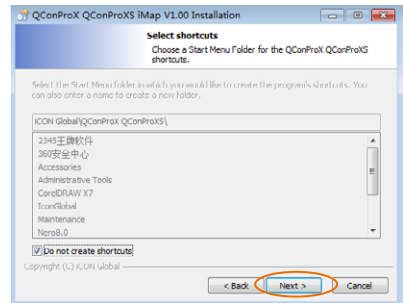


Diagram 3

5. Create a shortcut on your desktop

Please untick the box if you do not want to place a shortcut icon on your desktop for iMap™, otherwise click “Next”.

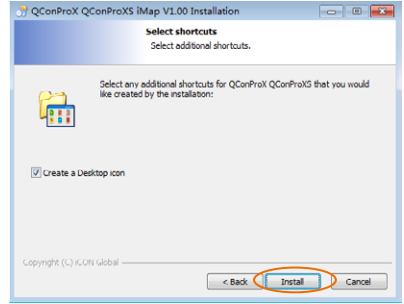


Diagram 4

6. iMap™ started to install

The iMap™ installation has now started, wait for it to finish. Then click “Finish”.



Diagram 5

7. Click the iMap logo on your desktop to launch the iMap software.

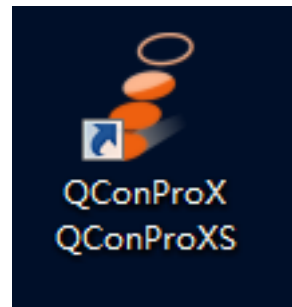
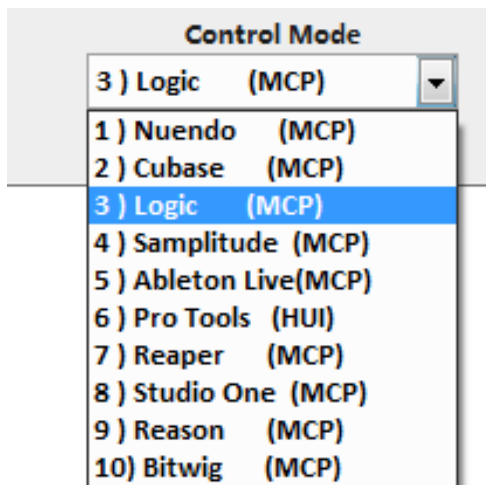


Diagram 6

Assigning DAW Mode (Mackie Control/HUI) or Defining MIDI Functions with iMap™

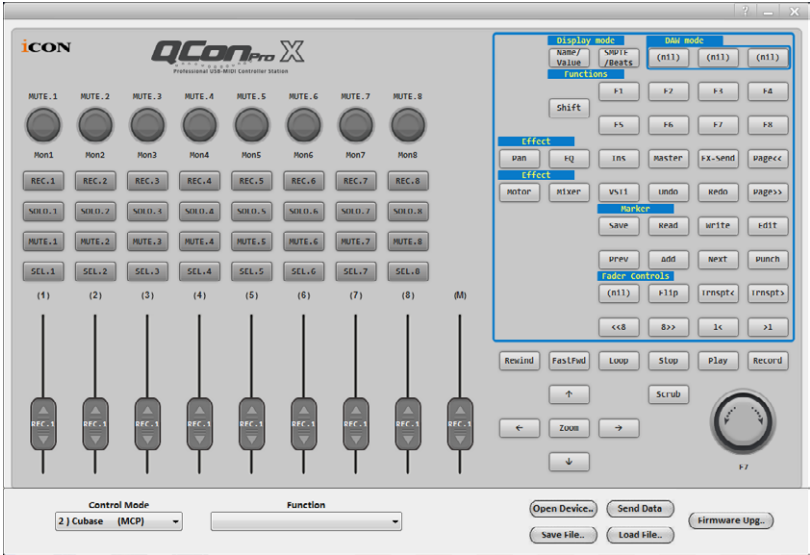


There are two different methods for setting up your QconPro X. In general, it is simpler and faster to set the device to pre-mapped DAW modes with Mackie Control/HUI protocol, depended on which DAW you use. The device has built-in DAW Mackie/HUI protocols as follows:

1. Nuendo (Mackie Control Protocol) – For Nuendo
2. Cubase (Mackie Control Protocol) – For Cubase
3. Logic (Mackie Control Protocol) – For Logic Pro X
4. Samplitude (Mackie Control Protocol) – For Samplitude Pro
5. Ableton Live (Mackie Control Protocol) – For Ableton Live
6. ProTools (HUI Control Protocol) – For Pro Tools
7. Reaper (Mackie Control Protocol) – For Reaper
8. Studio One (Mackie Control Protocol) – For Studio One
9. Reason (Mackie Control Protocol) – For Reason
10. Bitwig (Mackie Control Protocol) – For Bitwig

Or you can define each control element on your QconPro X with your own MIDI messages provided in iMap's function pull-down menu. However, unless you fully understand the MIDI structure of your DAW, this can be very troubling to set up. We strongly recommend that you use the pre-mapped DAW modes, as they are programmed according to the most popular user preferences, and are most likely to suit your needs.

Assigning DAW Mode (Mackie control/HUI) Using iMap™



iMap™ QconPro X software panel

Tip: You may also use the hardware to select DAW instead of through iMap. Please refer to P.13-14 for instructions.

To begin DAW mode setup, connect your QconPro X with iMap. Follow the steps below:

1. Connect QconPro X to your Mac/PC
2. Launch iMap and click “Connect Device”

Note: If your QconPro X is not connected to your Mac/PC, the message “There are no MIDI input devices” will appear. Please connect QconPro X to your Mac/PC with the provided USB cable.

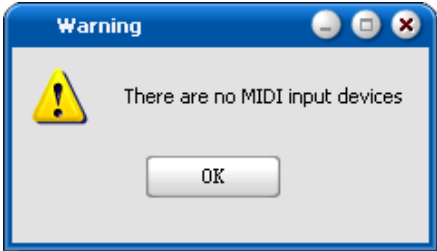
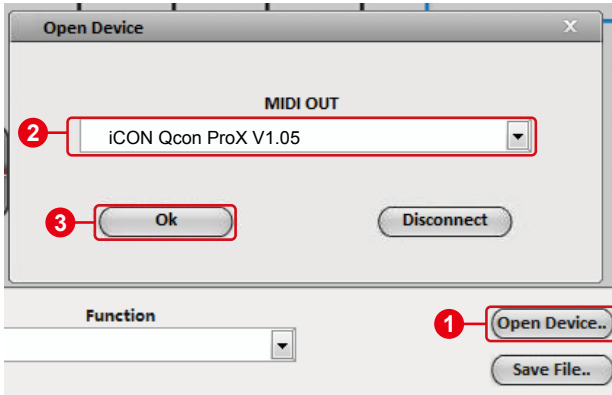


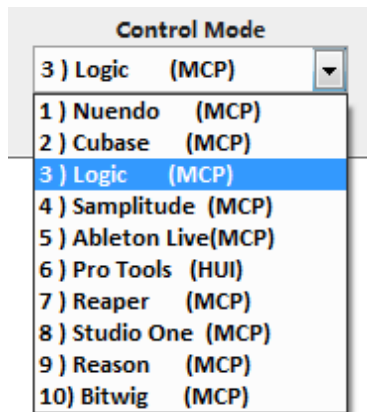
Diagram 7

3. Select “QconPro X” from the pop-up menu as your MIDI out device.



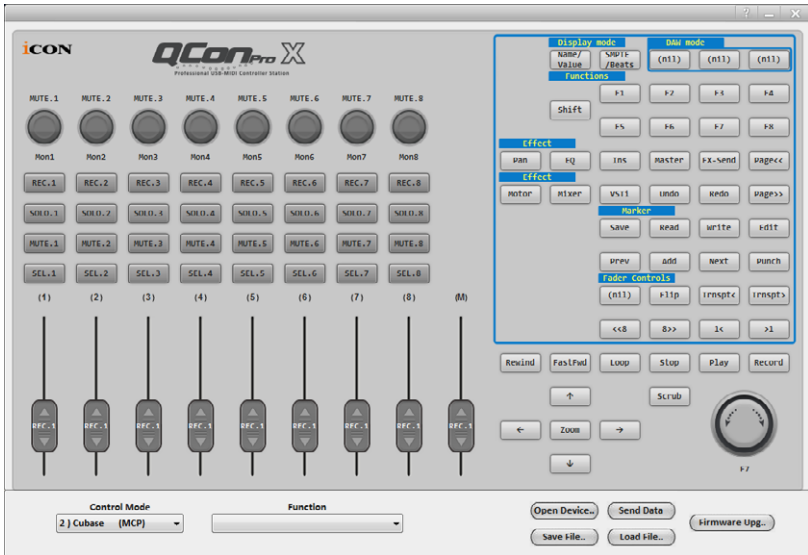
4. According to your DAW, select the DAW Mackie/HUI protocol mode from the “Mode” pull-down menu. Different DAW modes are listed below:

1. Nuendo (Mackie Control Protocol) – For Nuendo
2. Cubase (Mackie Control Protocol) – For Cubase
3. Logic (Mackie Control Protocol) – For Logic Pro X
4. Samplitude (Mackie Control Protocol) – For Samplitude Pro
5. Ableton Live (Mackie Control Protocol) – For Ableton Live
6. ProTools (HUI Control Protocol) – For Pro Tools
7. Reaper (Mackie Control Protocol) – For Reaper
8. Studio One (Mackie Control Protocol) – For Studio One
9. Reason (Mackie Control Protocol) – For Reason
10. Bitwig (Mackie Control Protocol) – For Bitwig



5. After you have finished creating all settings, click “Send Data”.
6. Close iMap.

Assigning MIDI Messages in User-Defined Mode Using iMap™



iMap™ QconPro X software panel

To begin the “User defines” mode setup, let make the connection of your QconPro X with iMap. Please follow the below steps:

1. **Connect QconPro X to your Mac/PC**
2. **Launch iMap and click “Connect Device”**

Note: If your QconPro X is not connected to your Mac/PC, the message “There are no MIDI input devices” will appear. Please connect QconPro X to your Mac/PC with the provided USB cable.

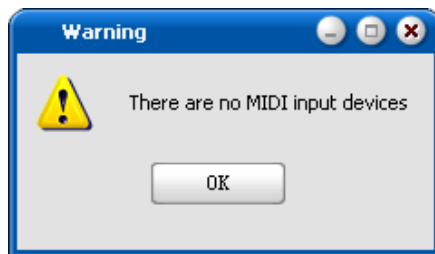
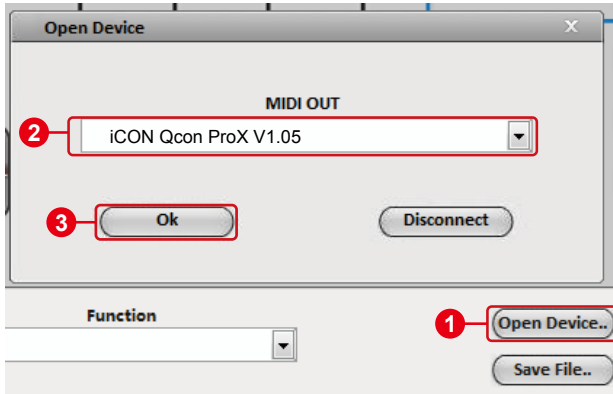
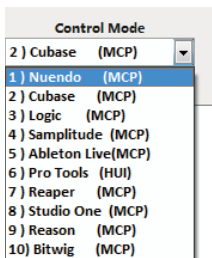


Diagram 8

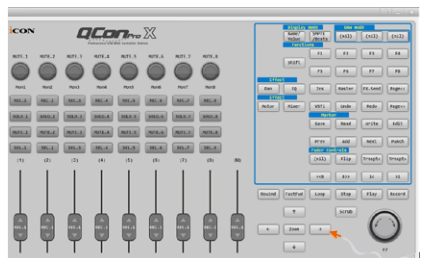
3. Select “QconPro X” from the pop-up menu as your MIDI out device.



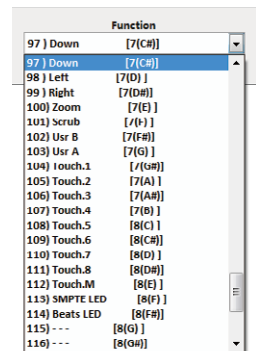
4. ① Select the DAW mode for your intended DAW. ② Then select the control elements such as buttons, knob (rotate/enter), or faders that you would like to assign a new midi function. ③ After selecting a control element, select a function from the “Function” pull down menu. Please see below for each control element setting in User-Defined Mode.



1



2

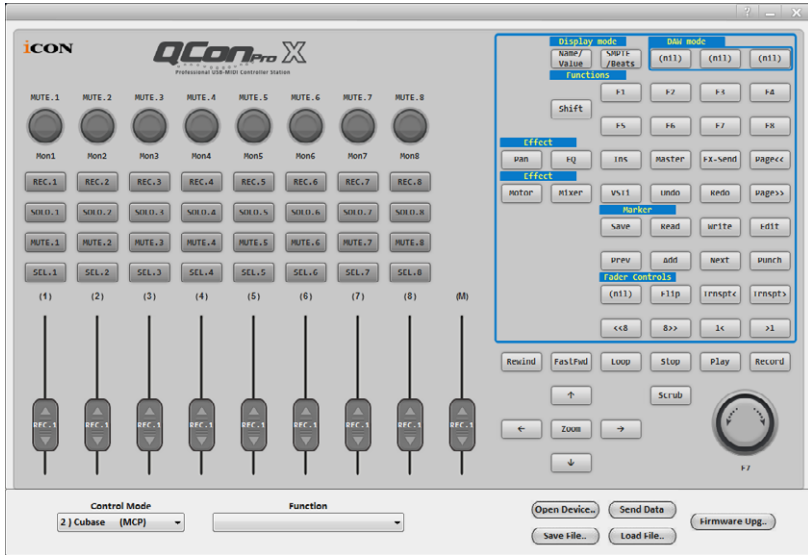


3

5. After you have finished all setting, click “Send Date” button.
6. Close iMap.

Control Element Setup in User-Defined Mode

iMap™ QconPro X software panel



There are controls including faders, knobs, buttons and jog wheel etc. on QconPro X that you could set your own MIDI messages. Four types of message including “Pitch”, “Note” & “CC” value you may adjust depended on the control element. Please refer to the below table for different control available setting values.

Also, according to your using DAW, select the control protocol (MCP or HUI) in order to create the communication bridge between your QconPro X to the DAW. Please refer to below table for the suggested control protocol for different DAW.

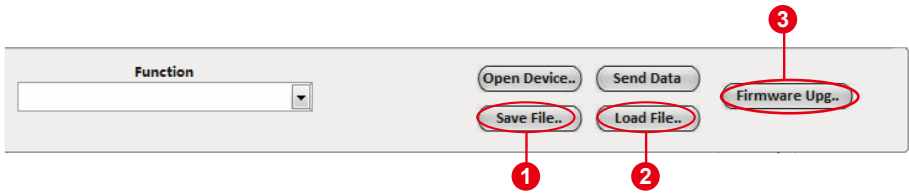
Table “Suggest protocol for different DAW”

Nuendo	MCP
Cubase	MCP
Logic Pro X	MCP
Samplitude Pro	MCP
Ableton Live	MCP
Pro Tools	HUI
Reaper	MCP
Studio One	MCP
Reason	MCP
Bitwig	MCP

Table “Control elements chart”

Control protocol	Control	Element	Available MIDI message setting values		
			Message type	Channel	Message
MCP	Faders	Slide	Pitch	1-9	0-127
			CC	-	Bank MSB to Poly Mode On
HUI		Touch sensitive	Note	-	C(-1) to G(9)
			CC	-	0-9
MCP	Knobs	Slide	CC	-	0-9
			CC	-	0-100
HUI		Touch sensitive	Note	-	Bank MSB to Poly Mode On
			CC	-	C(-1) to G(9)
MCP	Knobs	Rotate	CC	-	0-9
			Note	-	0-100
HUI		Touch sensitive	CC	-	0-9
			CC	-	0-100
MCP	JogWheel	Rotate	CC	-	0-9
HUI		Rotate	CC	-	0-9
MCP	Buttons	All buttons except "Lock", "<<", ">", "DAW"button	Note	-	C(-1) to G(9)
HUI		All buttons except "Read", "Write", "Touch", "Latch", "Trim", "Off", "Plug-in"	CC	-	0-100

Other Functions in iMap™



1. “Save file” button

Click this button to save your current settings for the QconPro X. The file is an “. QconPro X” file.

2. “Load file” button

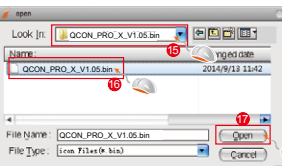
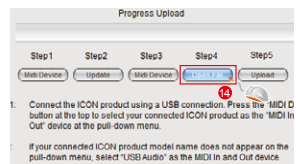
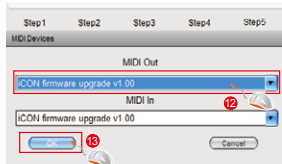
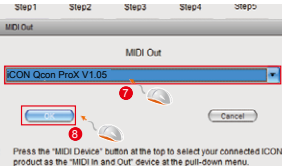
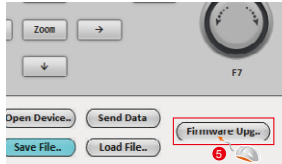
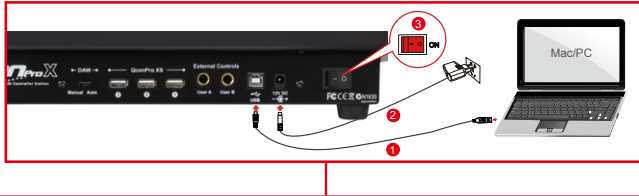
Click this button to load a previously saved “. QconPro X” setting file for your QconPro X.

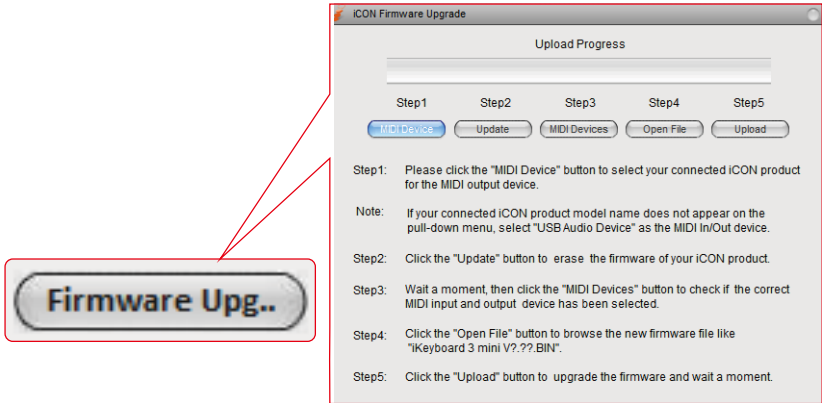
3. “Firmware Upgrade” button

Click this button to enter into the firmware upgrade window for QconPro X. Please refer to P.38 for the firmware upgrade procedure.

Firmware upgrade

QconPro X functional firmware upload procedure





Connect QconPro X to your Mac/PC with the provided USB cable and launch iMap. Click "Firmware Upgrade" to launch the window and follow the steps below carefully to upgrade

Warning: *The firmware upload process "MUST" be completed and not be interrupted during the file upload process, otherwise the unit may not be able to be restored, in which case your device may require service centre repair before it can be reactivated.*

Step 1: Please click the first "MIDI Device" button above to select QconPro X as the MIDI output device.

Note: *If QconPro X does not appear on the pull-down menu, select "USB Audio Device" as the MIDI In/Out device.*

Step 2: Click "Update" to erase the firmware. A pop-up message will show after the firmware has erased successfully.

Step 3: Please wait a few seconds to ensure the unit has completely rebooted, and then click the third button "MIDI Devices", to check if the correct MIDI input and output device has been selected.

Step 4: Click "Open File" to browse to the new firmware such as "QconPro X V1.00.BIN".

Step 5: Click "Upload" to upgrade the firmware, and wait until its completion.

Restore the factory default settings

To restore your QconPro X settings to factory default, simply launch iMap and import the original settings (i.e. without making any changes) to the device through the following steps.

1. Connect QconPro X with the provided USB cable and launch iMap software.
2. Click the “MIDI Device” button and select “QconPro X” as the MIDI input and output device.

Note: *If QconPro X does not appear on the pull down menu, select USB audio as the MIDI I/O device.*

3. Click “Send Data” to upload the setting to your QconPro X.
4. Close iMap, and then turn the QconPro X power of off & on again.

Specifications

Connector:	To computer	USB connector (standard type)
	To extender	USB connector (B-Type)
Power supply:		12V/2.5A DC
Current consumption:		2A or less
Weight:		6kg (13.2lb)
Dimensions:		473(L) x 416(W) x 188(H)mm
		18.62"(L) x 16.38"(W) x 7.4"(H)

Services

If your QconPro X needs servicing, follow these instructions.

Check our online help centre at <http://support.iconproaudio.com/hc/en-us>, for information, knowledge, and downloads such as

1. FAQ
2. Download
3. Learn More
4. Forum

Very often you will find solutions on these pages. If you don't find a solution, create a support ticket at our online ACS (Auto Customer Support) at the below link, and our technical support team will assist you as soon as we can.

To send defective products for service:

1. Ensure the problem is not related to operation error or external system devices.
2. Keep this owner's manual. We don't need it to repair the unit.
3. Pack the unit in its original packaging including end card and box. This is very important. If you have lost the packaging, please make sure you have packed the unit properly. ICON is not responsible for any damage that occurs due to non-factory packing.
4. Ship to the ICON tech support center or the local return authorization. See our service centres and distributor service points at the link below:

If you are located in Honk Kong

Send the product to:

ASIA OFFICE:

**Unit F, 15/F., Fu Cheung Centre,
No. 5-7 Wong Chuk Yueng Street, Fotan,
Sha Tin, N.T., Hong Kong.**

If you are located in Europe

Send the product to:

Servicecenter-Siedler

Am alten Bach 18

41470 Neuss

Germany

Tel: +49 2137 7864212

www.servicecenter-siedler.de

www.facebook.com/ServiceCenterSiedler

5. For additional update information please visit our website at:
www.iconproaudio.com



iCON[®]

www.iconproaudio.com

support@icon-global.com

