

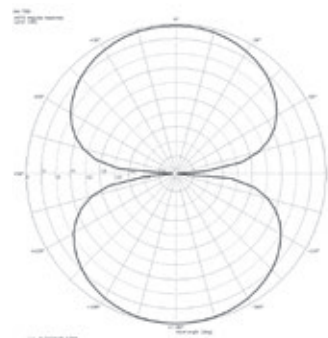
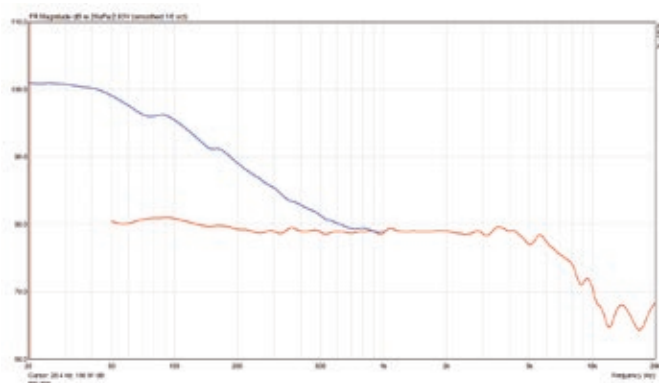
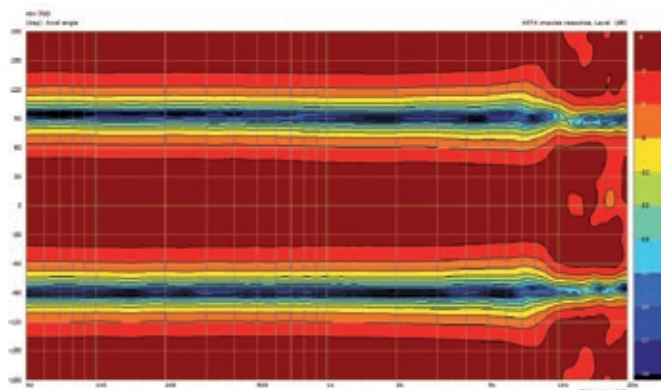
# RM 700 - ribbon microphone

The RM700 is a ribbon microphone, that has a special tabular shape. Like other ribbon microphones, it uses a strong cage of punched-hole brass plate which allows the sound wave to pass through it. The RM700 offers a rich, warm, classic sound and has a wonderful transient response. It is an excellent tool for recording, especially for instruments of high frequency and large dynamic range, as well as violins, percussion instruments, trumpet and horns.




### Caution!



- ▶ Never remove the screen holding the capsule, as this may damage the microphone!
- ▶ Never drop the mic, as this may cause severe damage!
- ▶ When the microphone is not in use, take it out of its clamp and put it in its case. Clean with damp cloth only.



Polar pattern @ 1 kHz

Connection	XLR
Transducer concept	ribbon
Directivity	figure-8
Field sensitivity [mV/ Pa]	2,7
Field sensitivity [dB re 1V/ Pa]	-51,4
Equivalent noise level [dB(A)]	13.4
Signal-to-noise ratio [dB(A)]	80.6
Maximum SPL [dB SPL @ 1% THD]	136
Electric impedance [ohm @ 1 kHz]	600
Frequency response 0.1 m -10 dB	20 -10.000 Hz
Weight	323 g (mic), 180 g (shockmount)

 For the transport and protective packaging, environmentally friendly materials have been chosen that can be supplied to normal recycling. Ensure that plastic bags, packaging, etc. are properly disposed of. Do not just dispose of these materials with your normal household waste, but make sure that they are collected for recycling. Please follow the notes and markings on the packaging.

 This product is subject to the European Waste Electrical and Electronic Equipment Directive (WEEE) in its currently valid version. Do not dispose of your old device with your normal household waste.  Dispose of this product through an approved waste disposal firm or through your local waste facility. Comply with the rules and regulations that apply in your country. If in doubt, consult your local waste disposal facility.