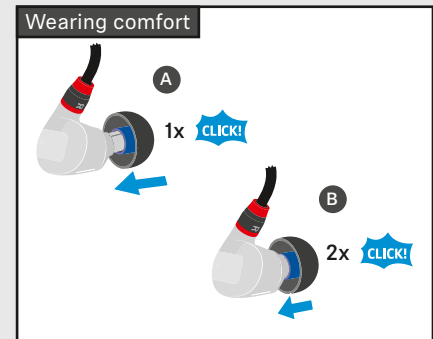
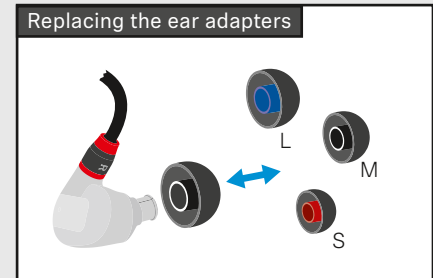
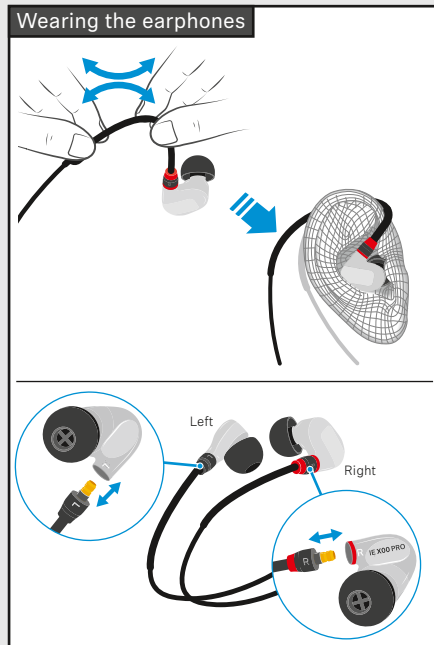
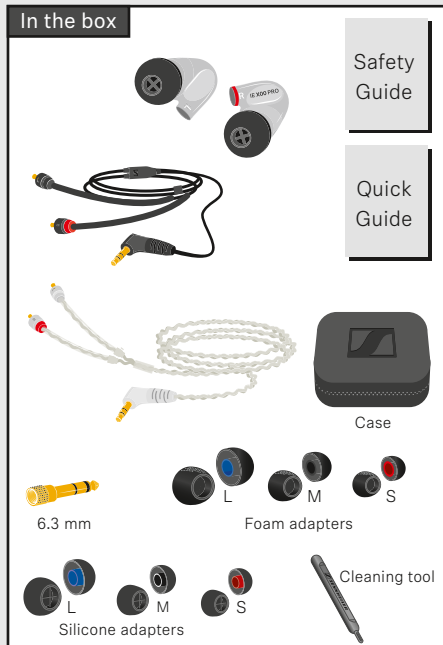




IE 400 PRO IE 500 PRO

Quick Guide | Kurzanleitung | Guide rapide | Guida rapida | Guía de inicio rápido |
Guia rápido | Beknopte handleiding | Krótka instrukcja obsługi | Snabbguide | Kort
vejledning | Πίκαοηje | Γρήγορος οδηγός | Kısa Kılavuz | Краткая инструкция | 快速指南 |
快速使用指南 | クイックガイド | 요약 설명서 |



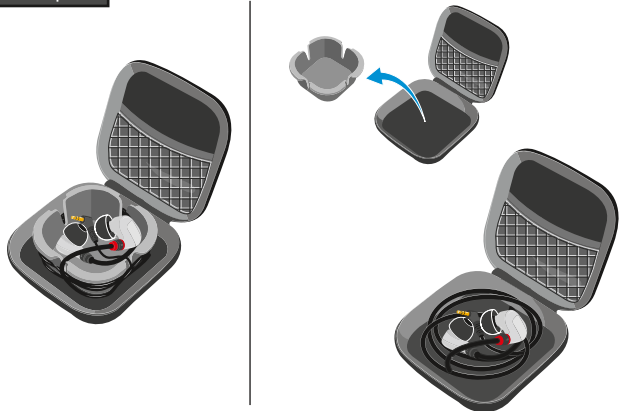
Sennheiser electronic GmbH & Co. KG

SENNHEISER

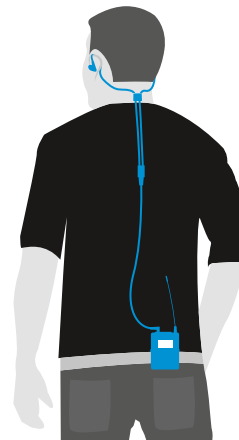
Am Labor 1, 30900 Wedemark, Germany, www.sennheiser.com

Publ. 11/18, 578646/A01

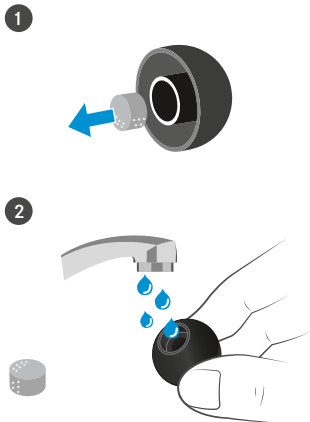
Transport



Optimum cable routing



Cleaning



Specifications

IE 400 PRO | IE 500 PRO

Frequency response	6 Hz - 19 kHz 6 Hz - 20 kHz
Impedance	16 Ω
Sound pressure level (1 kHz/1 Vrms)	123 dB 126 dB
THD (1 kHz, 94 dB)	< 0.08 %
Noise attenuation	up to 26 dB
Magnetized field strength	2 mT
Operating temperature	-5 °C to +50 °C
Storage temperature	-20 °C to +70 °C
Relative air humidity	< 95 %