

676 Quick Start Guide



WHAT'S IN THE BOX

- 676 Tube Preamp/Processor
- Power Cable

WARRANTY & PRODUCT REGISTRATION

For warranty information, visit dbxpro.com/warranty.
To register your product, visit dbxpro.com/register.

DOWNLOAD THE OWNER'S MANUAL

In our effort to be more environmentally responsible and provide the most up-to-date product information, owner's manuals can now be downloaded online at dbxpro.com.

1

MAKE CONNECTIONS

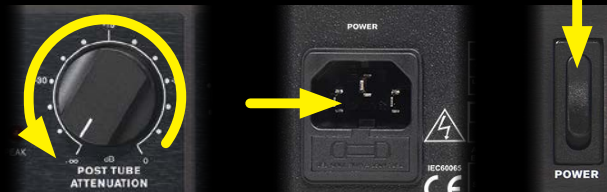
With all interconnecting equipment powered down, make connections to the 676.

SEE REVERSE SIDE FOR CONNECTION DIAGRAMS

2

APPLY POWER

Turn down the POST TUBE ATTENUATION control, connect the included IEC power cable, and switch on the front-panel power switch. Now power on all interconnected equipment.



3

SET CONTROLS

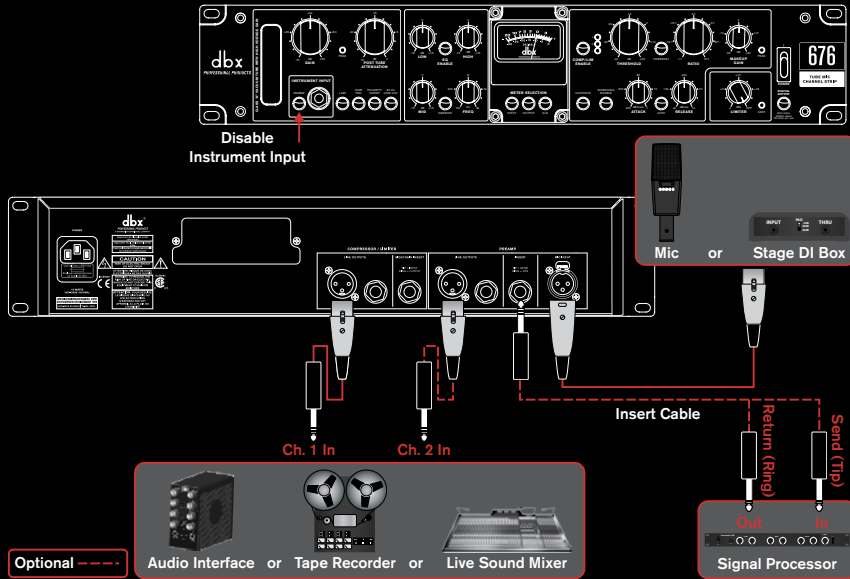
While monitoring the signal, adjust the controls to taste. Use lower GAIN settings and higher POST TUBE ATTENUATION settings for cleaner tones. Use higher GAIN settings and lower POST TUBE ATTENUATION settings for tones with more tube saturation and harmonics. Once the preamp levels are set, engage and adjust the EQ and compressor/limiter controls to taste, if required.

SEE REVERSE SIDE FOR EXAMPLE SETTINGS

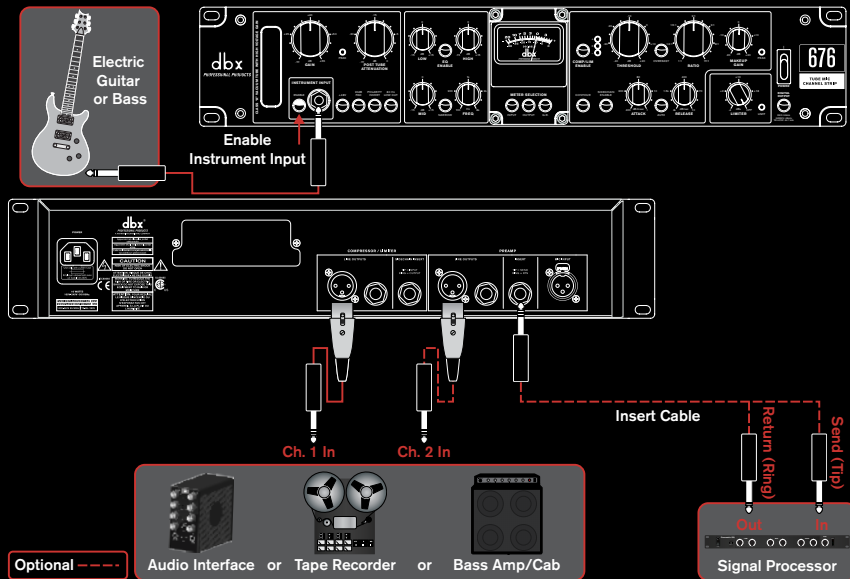
CONNECTION DIAGRAMS

Connect a favorite signal processor to the PREAMP INSERT jack. Use the PREAMP output in combination with the COMPRESOR/LIMITER output for parallel compression applications or to provide an uncompressed backup signal.

MIC/STAGE DI APPLICATION



DIRECT INSTRUMENT APPLICATION



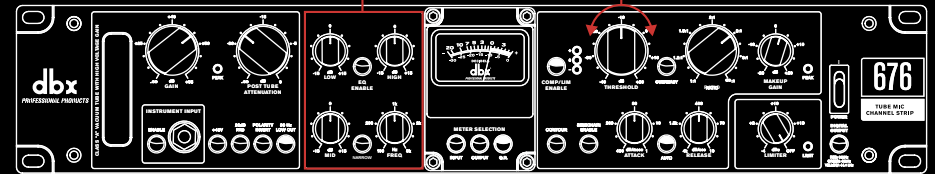
EXAMPLE SETTINGS

Use the below settings as a starting point. For further information on setting the controls, please see the 676 owner's manual available online at dbxpro.com.

VOCALS

If required, enable and set to taste.

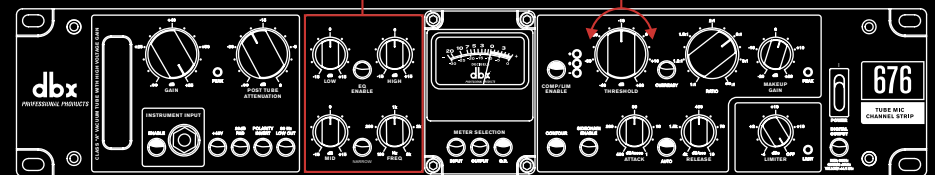
Adjust for about 2dB of compression on G.R. meter.



DIRECT BASS

If required, enable and set to taste.

Adjust for about 2dB of compression on G.R. meter.



ACOUSTIC GUITAR

If required, enable and set to taste.

Adjust for about 2dB of compression on G.R. meter.

