

Millenium

MPS-500 USB
e-drum set



Musikhaus Thomann
Thomann GmbH
Hans-Thomann-Straße 1
96138 Burgebrach
Germany
Telephone: +49 (0) 9546 9223-0
E-mail: info@thomann.de
Internet: www.thomann.de

30.06.2016, ID: 277656 (V2)

Table of contents

1	Safety instructions	4
2	Contents of package	5
3	Assembly	6
4	Protecting the environment	11

1 Safety instructions

 **DANGER!**

Danger for children

Ensure that plastic bags, packaging, etc. are disposed of properly and are not within reach of babies and young children. Choking hazard!

Ensure that children do not detach any small parts (e.g. knobs or the like) from the unit. They could swallow the pieces and choke!

Never let children unattended use electrical devices.

2 Contents of package



Before you assemble your kit, make sure the contents of package is complete according to the following list.

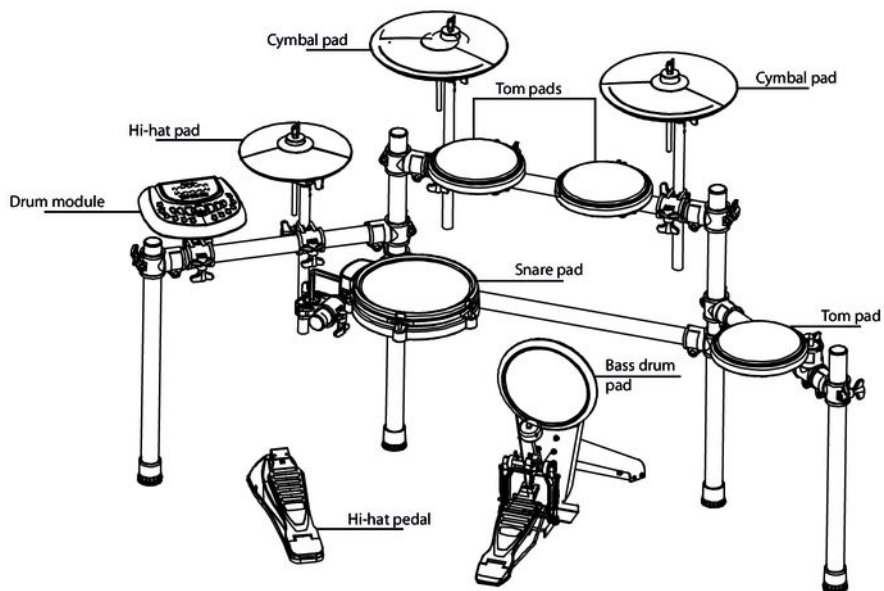
Millenium MPS-500 e-drum set

- Millenium MPS-500 e-drum module
- Pads:
 - 1 × 8" snare / stereo
 - 3 × 8" tom / mono
 - 1 × 8" kick
 - 1 × 8" hi-hat
 - 1 × 12" crash with choke function
 - 1 × 12" ride
- Optical hi-hat controller
- Drum pedal
- Rack with pad brackets
- Complete pad wiring
- Mains adapter

3 Assembly

Overview

Loosen the wing nuts on the holder clamps before inserting the tubes. Mount the various elements in the specified sequence. The positions of the pads, cymbals, etc. are shown in the illustration below.

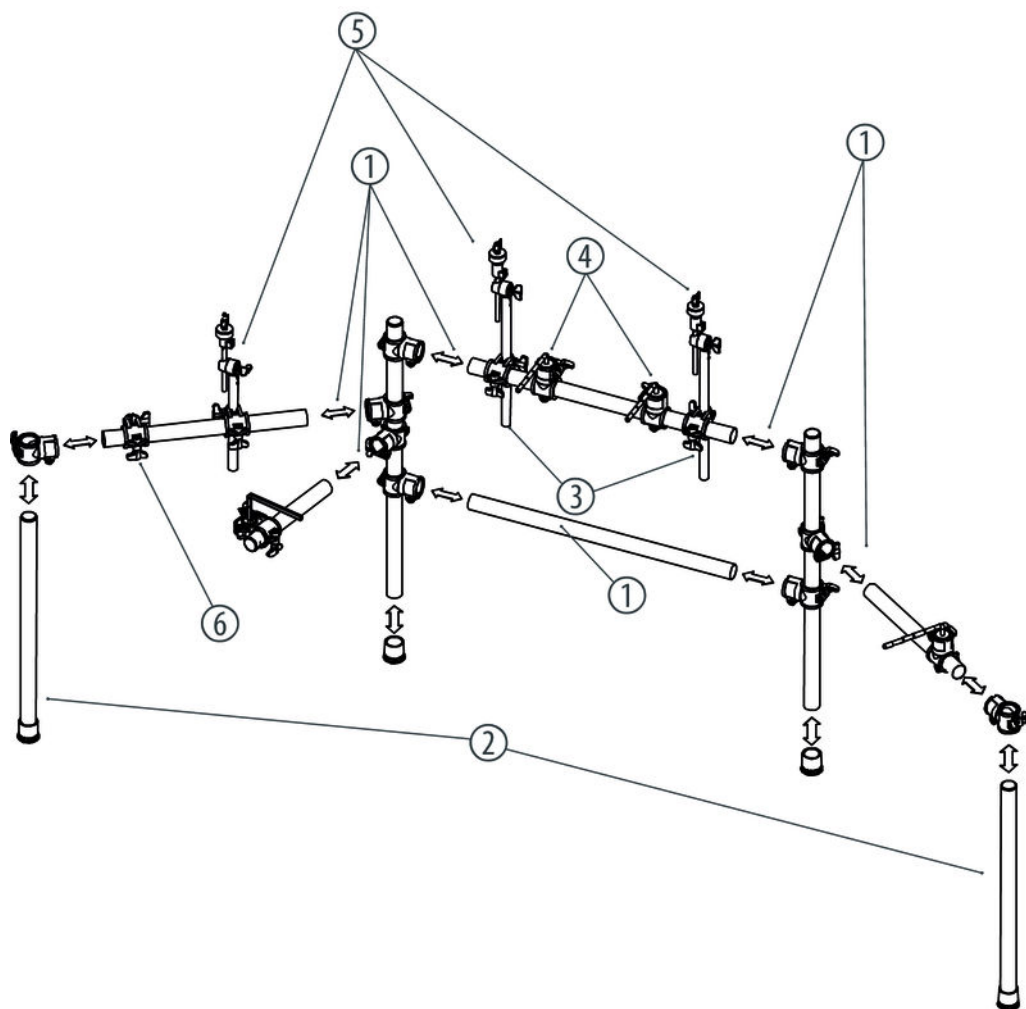


Setting up the rack

⚠ CAUTION!

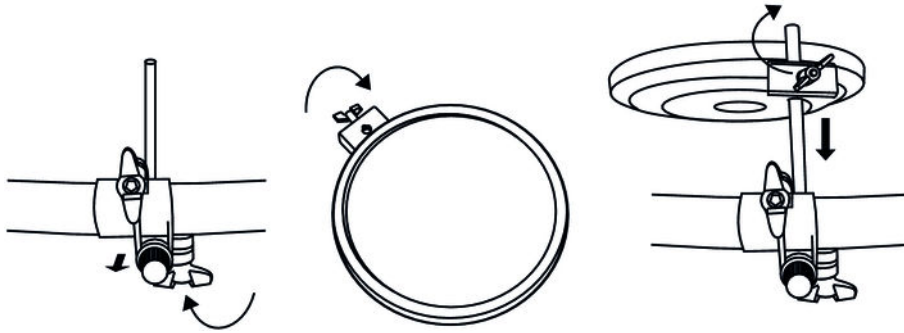
Danger of cuts on hands and fingers

When plugging the connections, take care for sharp edges on the metal pipes, screws etc.



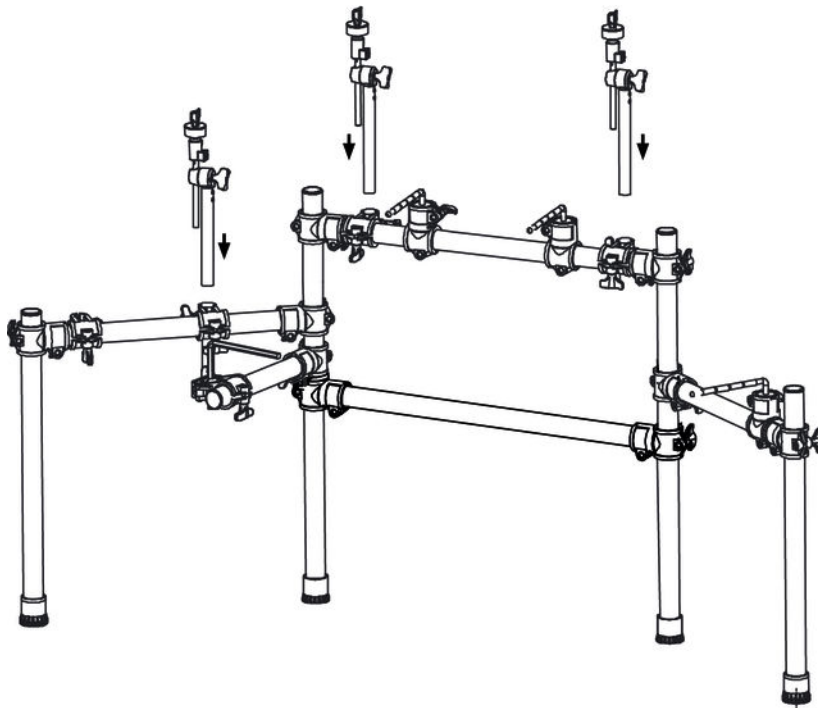
1	Adjust the height of the holder clamps for the horizontal crossbar, three wing arms and the stabilizing tube according to your preferred playing position. Mount the horizontal crossbar and three wing arms and tighten the retaining screws.
2	Insert the two lateral supports into the holder clamps provided for this purpose. Make sure that the lower ends of the supports are resting flush on the floor. Then tighten the retaining screws.
3	Position the holder clamps for the individual pads. Then tighten the retaining screws.
4	Turn the L-rods into a suitable position for mounting the pads. Then tighten the retaining screws.
5	Insert the crash pad, ride pad and hi-hat pad supports into the respective holder clamps on the rack. Secure the supports at the desired vertical position using the retaining screws.
6	Loosen the retaining screws at the support joints and orient the supports so as to match your preferred playing position. Then re-tighten the retaining screws.

Mounting pads on the rack

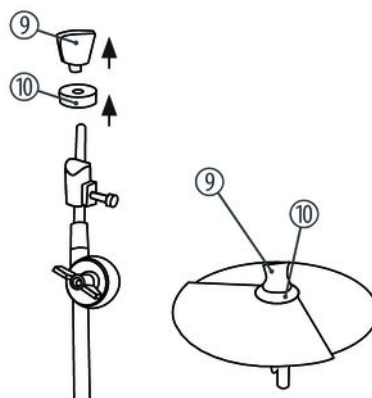


1. Attach the supplied L-pieces to the pads. First, tighten the wing nuts on the pads hand-tight.
2. Then slide the plastic ends of the L-pieces up to the stop into the designated terminals on the rack.
3. Align the pads on the rack to meet your needs, then tighten the wing nuts of the pad brackets and the bolts of the pad terminals on the rack evenly.

Mounting cymbals on the rack



1. ➤ Put the three cymbal holders as shown into the designated terminals on the rack.
2. ➤ Tighten the screws of the terminals firmly and evenly.

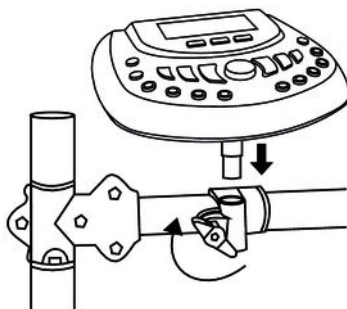


3. ➤ Unscrew the wing nuts (9) from the cymbal holders and take the felt washers (10) off the holders.
4. ➤ Place the cymbals on their supports as illustrated.
5. ➤ Put the felt washers (10) on top of the cymbals, and secure the pads on their supports using the respective wing nuts (9).



Make sure that the connector block on the underside of the cymbals is not stuck to the cylinder bolt of the counter-holder.

Mounting the drum module on the rack



1. ➤ Put the drum module up to the stop into the empty terminal of the left side arm.
2. ➤ Align the module and tighten the wing nut of the terminal.

Mounting the bass pedal

1. ➤ Snap the two metal rods into the holes provided on the frame of the pedal.
2. ➤ Place the beater into the hole provided on the rotary head of the kick drum pedal and tighten the clamp with the drum key firmly.

Bass drum and hi-hat

- 1.** ➤ Position the bass drum pad centred under the rack. Position the bass drum pedal centred in front of the pad.
- 2.** ➤ Place the hi-hat pedal to the left of the bass drum pedal.

Set-up and cabling

Set up the rack, the pads and the cymbals according to your needs. As a final step, all triggers need to be wired to the drum module. Note the labelling on the drum module and the colour markings of each cable.

4 Protecting the environment

Disposal of the packaging material



For the transport and protective packaging, environmentally friendly materials have been chosen that can be supplied to normal recycling.

Ensure that plastic bags, packaging, etc. are properly disposed of.

Do not just dispose of these materials with your normal household waste, but make sure that they are collected for recycling. Please follow the notes and markings on the packaging.

Disposal of your old device



This product is subject to the European Waste Electrical and Electronic Equipment Directive (WEEE). Do not dispose with your normal household waste.

Dispose of this device through an approved waste disposal firm or through your local waste facility. When discarding the device, comply with the rules and regulations that apply in your country. If in doubt, consult your local waste disposal facility.

