

REVISED

Instruction Manual

EZ Touch! Electronic musical instruments
Otamatone Deluxe PAT.P

Revised-2016

明和電機

STEP ① Put new batteries in the battery box.

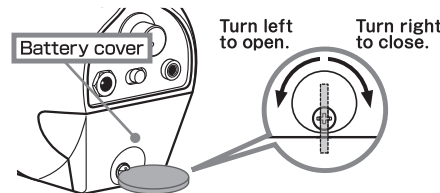
How to change batteries:

Required batteries: AAx3

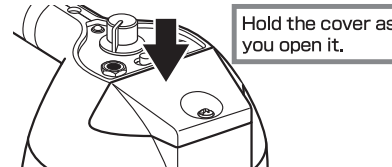
• Before using the product, please take out the cushioning material provided for maintaining the shape of the mouth.
• Discard the material.

• Included batteries are for testing only.
• Alkaline batteries are recommended.

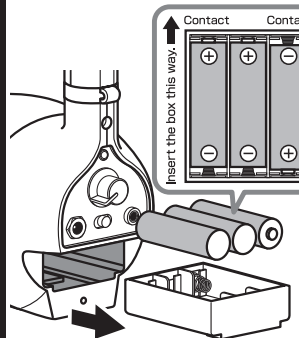
- ① Hold the battery cover and open it with a right size coin (or an equivalent item.)



Caution:
The battery cover may spring open as you loosen it.
Keep your face away from it.



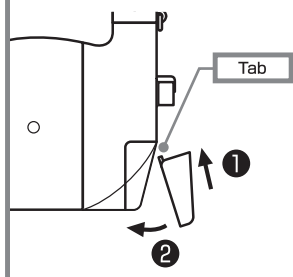
- ② Take the battery box out and place batteries.



• Place batteries in the right directions.
• Follow the directions shown on the bottom of battery box.
• Change the batteries when the sound gets softer or intermittent.

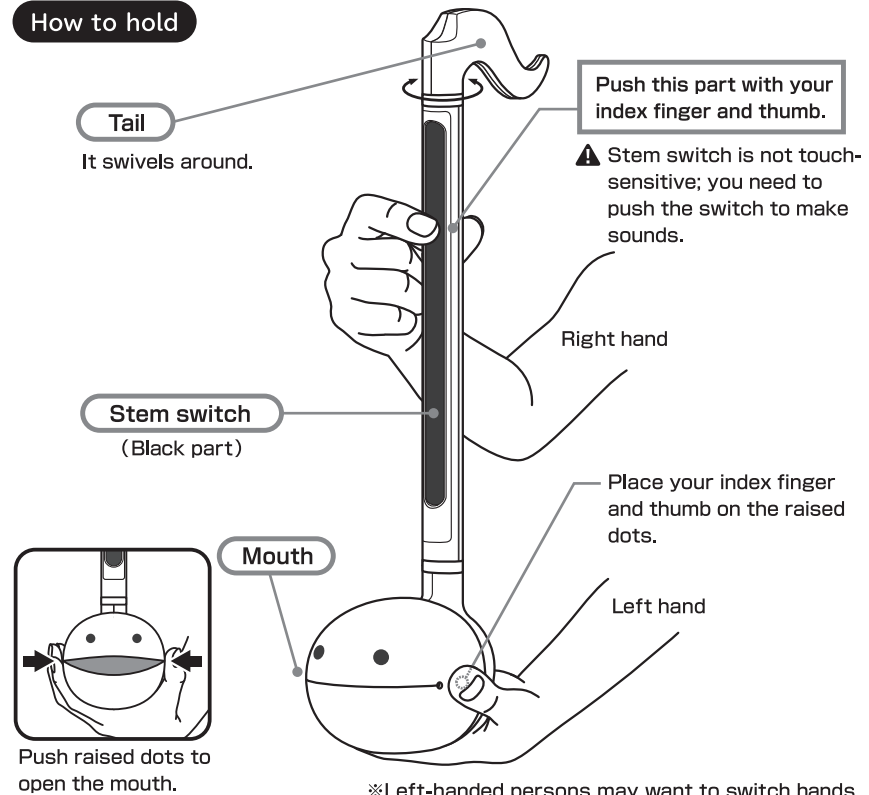
⚠ Disconnect the AC adapter from the unit before changing the batteries.

- ③ Attach the cover as shown, push to close, and tighten the screw.



STEP ③ Hold the Otamatone.

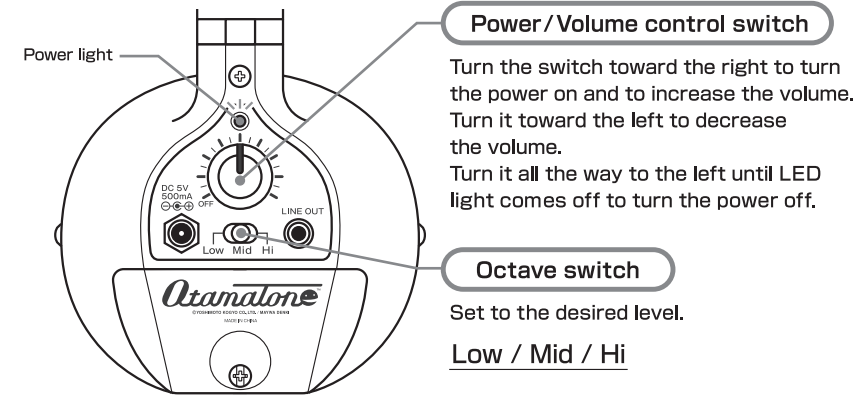
How to hold



STEP ② Set up the Otamatone for playing

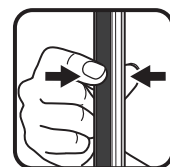
Power/volume control and Octave settings

- ① Turn the Power/volume control switch to the right until it clicks; LED light will come on.
② Set the Octave switch to the desired level.



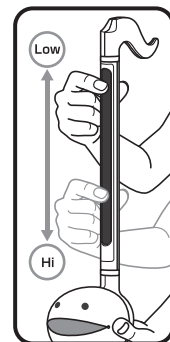
Hint to make the batteries last: Turn the power/volume switch off until it clicks after playing.

STEP ④ Let's make some sounds!



Push Technique:
Push the Stem switch anywhere! This will make "mmm" sound. Push different places and the sound will change too.

Point! Push the Stem switch with you index finger and thumb.



Slide Technique:
Push and hold the Stem switch. Slide the fingers up and down. This will make "peoooo" sound.

Point! Push a bit harder and slide to make sure the sound does not break. After mastering the technique, you can adjust the pressure.

※Change the Octave switch to try a different pitch.



Mouth Technique:
While pushing the Stem switch, open and close the mouth. The sound changes from "woo" to "wah." Repeat this to make "wah wah wah."

Point! This will vary the sound. The opening and the closing of the mouth entertains everyone!

⚠ Mouth Technique does not work while using the headphones.

Please turn over.

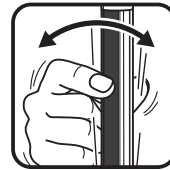
REVISED

EZ Touch! Electronic musical instruments
Otamatone Deluxe

Note:
 ·This product does not speak.
 ·This product does not play the exact twelve notes.
 ·There is individual variability in the range and the tone.

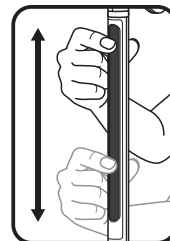
STEP 5 Techniques!

Try different techniques!



Vibrato:

A tremulous or pulsating effect produced in an instrumental or vocal tone.
 Vibrato the Stem while doing the Push technique.
 The sound changes according to the vibration.



Portamento:

A continuous gliding movement from one tone to another.
 Play songs as you slide your fingers.
 It sounds like a grass whistle.



Wah-wah:

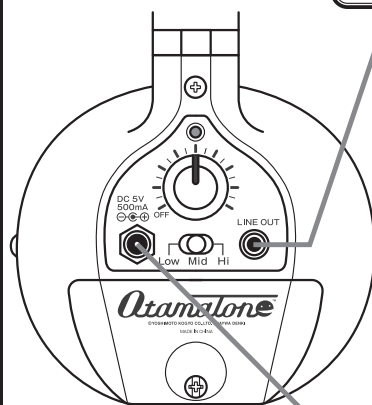
A musical special effect to produce voice-like tones.
 Open and close the mouth while pushing the Stem switch.

▲ Mouth Technique does not work while using the headphones.

STEP 7 Output terminal / DC 5V terminal (optional)

How to connect Headphones and AC adapter

No headphones or AC adapter included.



3.5mm Stereo mini jack

This is for 3.5mm stereo mini plug.
 You can connect your headphones here.

- You will hear the sound from the speaker while using headphones.
- Mouth Technique does not work while using headphones.
- Set the volume low first and then adjust it while using headphones to protect your hearing.

▲ It's not unusual to hear some noises from the amplifier or speakers.

▲ While using headphones, listening at high volume for extended periods of time may cause hearing impairment.

DC5V jack

AC adapter specifications:

- Input: AC100-240V, 50-60Hz
- Output: DC5V, Max 1A
- Output characteristics: Switching-mode (regulated output voltage) recommended
- DC plug size: 2.1mm / 5.5mm
- Plug polarity: Center positive (⊖ ⊕ ⊕)

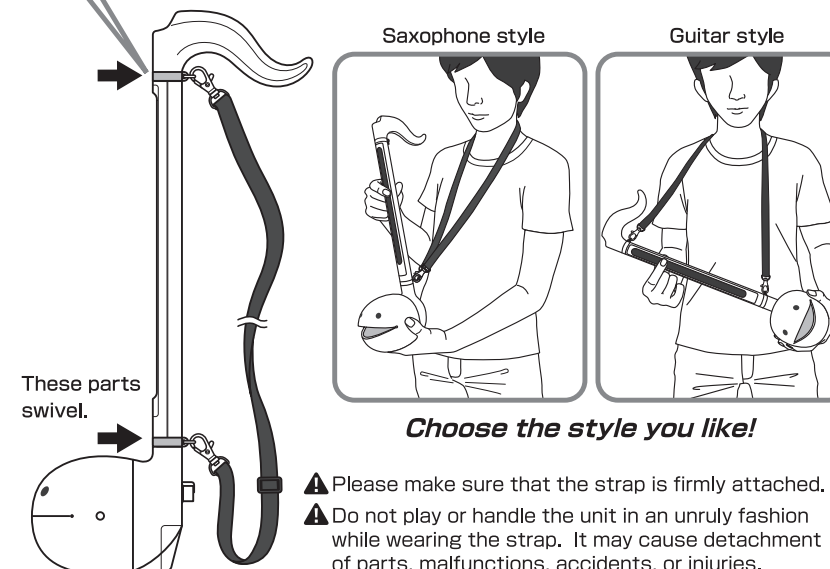
Note about AC adapter:

Use only the specified AC adapter approved for use with this product. We assume no responsibility whatsoever for any damage or loss of the product and/or AC adapters caused by the use of inappropriate adapters or by mishandling of adapters.

STEP 6 Strap (optional)

Strap: Use the enclosed strap for carrying the unit and playing for a longer period of time.

There are two rings at the top and the bottom of the Stem switch to attach the strap.



Choose the style you like!

- ▲ Please make sure that the strap is firmly attached.
- ▲ Do not play or handle the unit in an unruly fashion while wearing the strap. It may cause detachment of parts, malfunctions, accidents, or injuries.

Important Safety Instructions

Safety instructions for using AC power source:

Mishandling of power source may cause fatal accidents or serious injuries.

- Check the voltage rating before you connect the adapter to an electrical outlet to ensure that the required voltage and frequency match the available power source.
- Use only the specified AC adapter approved for use with this product.
- Wipe off dust from the AC adapter plug to avoid electric shock or short-circuit.
- Electric Shock Hazard: Do not handle the AC adapter with wet hands.
- Unplug the AC adapter after use.
- Be sure to grasp the adapter itself, not the cable, when disconnecting the AC adapter from the power source.
- Do not piggyback the electrical outlet. It may cause overheating.
- Do not forcefully bend, twist, or pull the cable, or modify the cable.
- Do not put the cable under furniture, electric appliances, figurines, or any other heavy objects. Damaged cables may cause fire or electric shock.
- Do not use any AC adapter with damaged cable.
- In the event that the AC adapter becomes damaged or the unit malfunctions, turn the unit off and disconnect the AC adapter immediately.

For more information on Otamatone and fun videos showing hints and techniques are available at the following site:

<http://www.maywadenki.com/otamatone>

Produced by CUBE CO., LTD. <http://www.cube-works.co.jp>

©YOSHIMOTO KOGYO CO.,LTD. / MAYWA DENKI