



01

Check the included items

As soon as you open the package, check to see that all items are included. If anything is missing, please contact your dealer.

* This package does not include a kick pedal. Use with a commercially available kick pedal.

MDS-4V

* When checking the items included with the MDS-4V refer to "MDS-4V Owner's Manual."



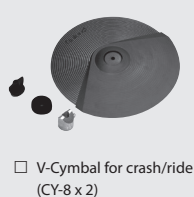
□ Hi-hat control pedal (FD-9)



□ Kick pad (KD-10)



□ Cymbal pad for hi-hat (CY-5)



□ V-Cymbal for crash/ride (CY-8 x 2)



□ V-Pad for snare (PDX-8)



□ V-Pad for tom (PD-8A x 3)

* The PD-8A is a new unit designed specifically for the TD-17K. It does not support the use of the rim-shot technique.



□ Drum sound module (TD) (TD-17-L)



□ Connection cable (special for TD)



□ AC adaptor

- Setup Guide (this document)
□ Owner's manual set
□ Drum key

Parts of the TD-17K

02

Assemble the stand

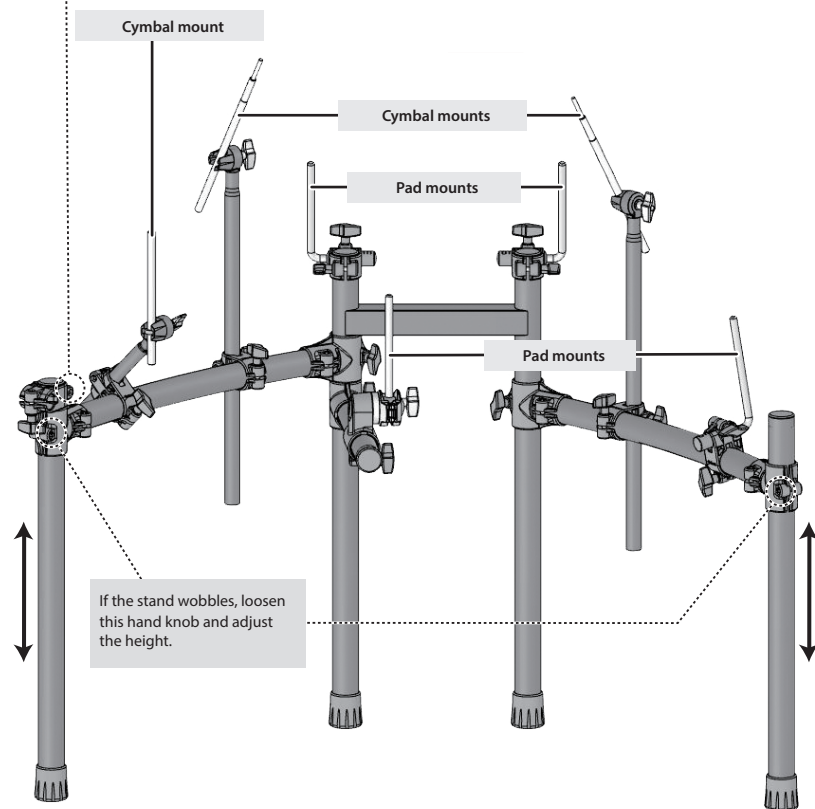
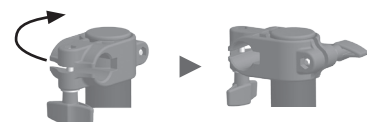
* The tip of the mount is sharp. Handle it with care.

* When setting up or storing the stand, be careful not to pinch the fingers you use to handle the stand.

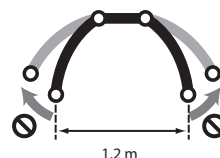
Assembly procedure

Assemble the stand using the procedure described in "MDS-4V Owner's Manual."

Loosen this hand knob, and rotate the mount holder (L) 90 degrees in the direction of the arrow.



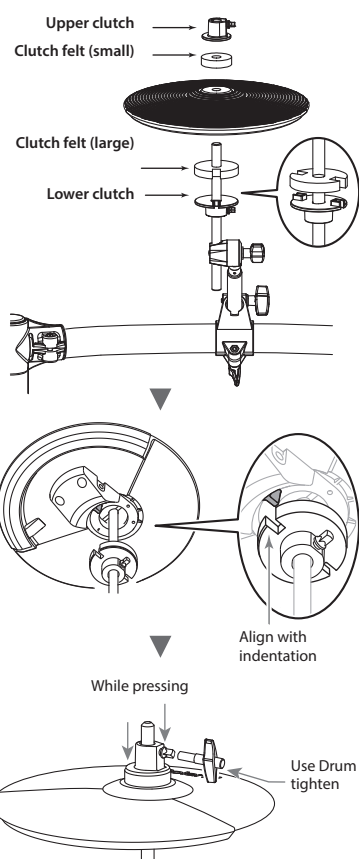
* For reasons of safety, do not spread the stand wider than 1.2 meters (47 inches).



03

Attach the parts

Attach the hi-hat (CY-5)

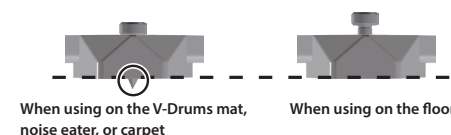


Attach the TD

1. Align the protrusions of the sound module mount with the rails of the TD, and slide it in until you hear it click.
2. Loosen the hand knob of the mount holder, and insert the sound module mount.
3. Adjust the angle of the TD, and then tighten the hand knob.

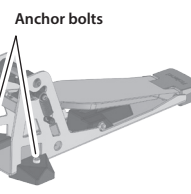
Place the hi-hat control pedal (FD-9)

If you're using this unit on a V-Drums mat, on a noise eater (NE-10), or on carpet, extending the anchor bolts will secure the unit in place, making it easier for you to perform.



When using on the V-Drums mat, noise eater, or carpet

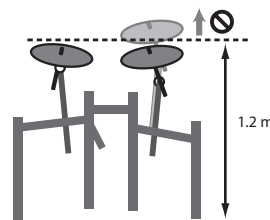
When using on the floor



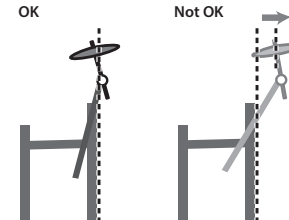
- * The tips of the anchor bolts are sharp. Handle with care.
- * When used on flooring, the anchor bolts may damage the floor.

Adjusting the position of the cymbal

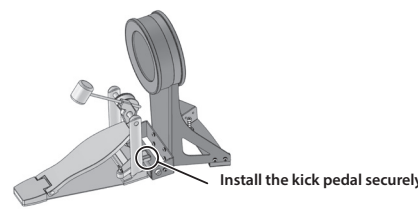
Adjust the height of the rod so that the highest point of the cymbal is less than 1.2 meters.



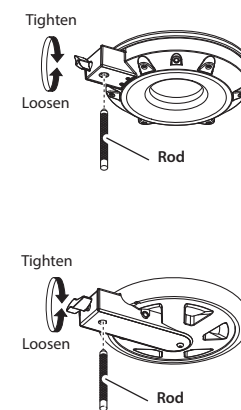
Attach the cymbal so that its center does not extend toward the back beyond the pipes of the stand (the pipes at the back of the stand).



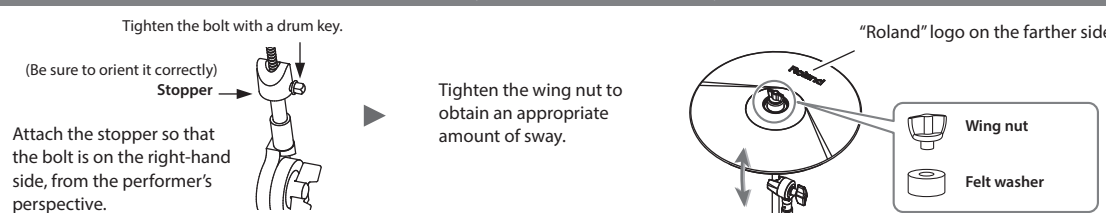
Attach the kick pedal (KD-10)



Attach the snare (PDX-8) and toms (PD-8A)



Attach the crash cymbal (CY-8) and ride cymbal (CY-8)



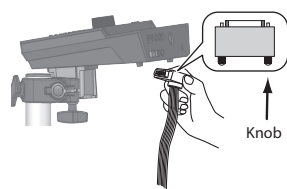
04

Connect the pads to TD

Connection procedure

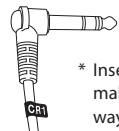
1. Connect the cable to TD as shown in the illustration.

Insert the connector all the way, then turn the knobs to fasten it securely.



Knob

2. Labels indicating the pad to be connected are attached to the cable. Connect the cable to the OUTPUT jack of each pad as shown in the illustration.

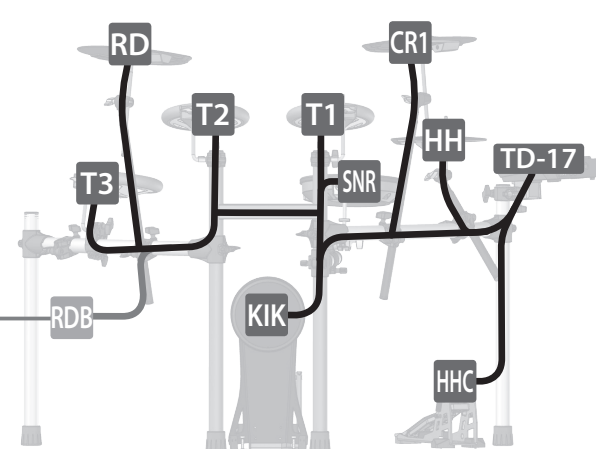


* Insert the plug firmly, making sure it's all the way in.

* Fasten the cables so that they will not obstruct your playing; use cable clips and cable ties. Make sure to wrap the cable ties around the pipes.

* Do not connect the RDB cable (for extension). Leave the cap in place, and fasten the cable so that it will not hinder your performance.

As seen from the back



05

Connect the AC adaptor and speakers

Connect the AC adaptor, speakers, or headphones as described in the owner's manual of the TD.

* To prevent malfunction and equipment failure, always turn down the volume, and turn off all the units before making any connections.

For a left-handed setup

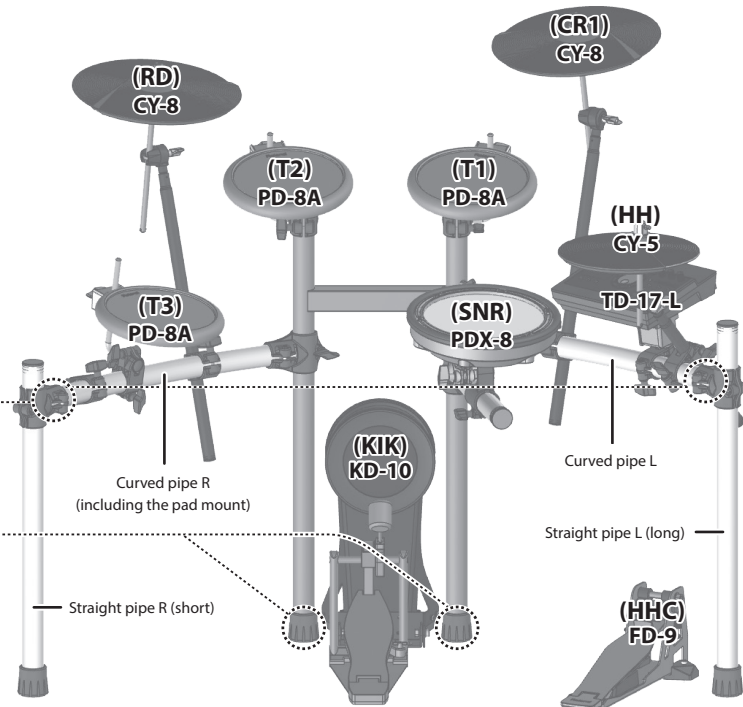
The setup described in this guide is for right-handed players. To set up for a left-handed player, reattach the components as follows.

- Exchange curved pipes (L) and (R), and straight pipes (L) and (R), left-for-right.
- Attach the mount holder (L) to the curved pipe (L).
- Attach holder (C) and the snare pipe to the right side.
- Exchange the pads and cymbals with their attachment mounts left-for-right.
- Exchange the TD with its sound module mount left-for-right.

After exchanging the curved pipes, attach the holders so that the marks on the pipes are visible through the gaps of the holders.

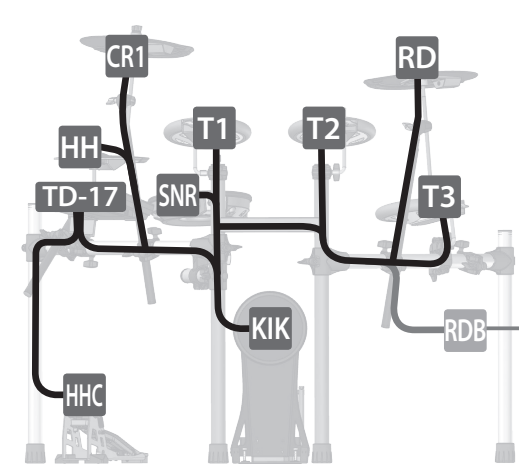


Remove the caps, remove holder (C) and the snare pipe, and reattach them to the right side.



Connect the cables as shown in the illustration.

As seen from the back



* Do not connect the RDB cable (for extension). Leave the cap in place, and fasten the cable so that it will not hinder your performance.

This completes assembly and connections.

■ When you've finished making connections, turn on the power as described in the TD-17/17-L Owner's Manual, and verify that you can hear sound.

