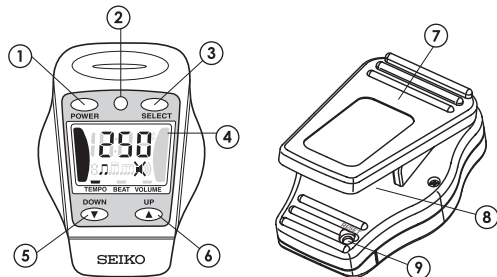


# SEIKO DIGITAL METRONOME DM50

## INSTRUCTION MANUAL

### NAME AND OPERATION OF PARTS



#### ① Power button

Press it to turn on and off the metronome and to change over the displays.

#### ② Tempo LED display

It visually represents the tempo of the metronome with the flashing of the LED.

#### ③ Selector button

Press it to select the setting item from tempo, beat/rhythm and volume.

#### ④ Liquid crystal display

It indicates the tempo, beat/rhythm and volume settings you have made and the current time.

#### ⑤ DOWN button

#### ⑥ UP button

Press the buttons to change the setting of the item selected by pressing the selector button ③.

#### ⑦ Clip

Use it to attach the metronome to a music stand or musical score.

#### ⑧ Speaker

It gives out the tempo sound of the metronome.

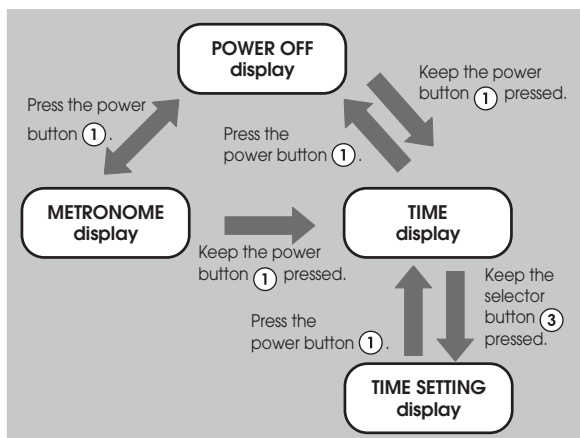
#### ⑨ Reset switch

Push it when the battery is replaced with a new one or when the metronome does not work properly.

### HOW TO USE

● The battery included with the metronome is a monitor battery, and its life may be shorter than the specified period.

#### ● Changeover of displays



When the metronome is turned off (when the display is blank), pressing the power button ① will turn it on. Another press of the button will turn it off again.



#### ● Tempo setting

1. Press the selector button ③ to set "—" mark at the bottom of the display to "TEMPO". The tempo setting mode will be shown on the display.
2. Press UP ⑥ or DOWN ⑤ button to set the desired tempo. With each press, the tempo is increased or decreased by one, respectively. The digits move quickly by 10 tempos if the button is kept pressed.

30 ⇄ 31 ⇄ ..... ⇄ 119 ⇄ 120 ⇄ 121 ⇄ ..... ⇄ 249 ⇄ 250

#### ● Beat/rhythm setting

1. Press the selector button ③ to set "—" mark at the bottom of the display to "BEAT". The beat/rhythm setting mode will be shown on the display.
2. Press UP ⑥ or DOWN ⑤ button to set the desired beat/rhythm. With each press, the beat/rhythm changes one by one in the following order.

0 ⇄ 1 ⇄ 2 ⇄ 3 ⇄ 4 ⇄ 5 ⇄ 6 ⇄ 7 ⇄ ⇄ ⇄

#### ● Volume setting

1. Press the selector button ③ to set "—" mark at the bottom of the display to "VOLUME". The volume setting mode will be shown on the display.
2. Press UP ⑥ or DOWN ⑤ button to set the volume to the desired level. With each press, the volume level changes one by one in the following order.

High ⇄ No sound ⇄ Low ⇄ Mid

#### ● Time setting

Keep the power button ① pressed when the power is turned off or when the metronome display is shown. The time display will be shown. Follow the procedure below to set the current time.

1. While in the time mode, keep the selector button ③ pressed to show the time setting display.
2. Press the selector button ③ to select the digits to be adjusted from hours and minutes. Press UP ⑥ or DOWN ⑤ button to set the desired time.
3. After the time adjustment is completed, press the power button ① to return to the time display.

\* To turn the power off, press the power button ① again.

\* If you decide not to use the metronome for a long time, it is recommended that the power is turned off to save battery energy.

### MEMORY BACKUP FUNCTION

Even after the metronome is turned off, the settings you have made are stored in memory and will not be erased.

If the battery is replaced with a new one or if the reset switch ⑨ is pushed, the metronome will return to the following initial settings.

- |                |        |
|----------------|--------|
| 1. Tempo       | [120]  |
| 2. Beat/rhythm | [0]    |
| 3. Volume      | [High] |

## BATTERY CHANGE

- When the battery nears its end, the tempo LED display and the liquid crystal display become dim, and the sound becomes weak. In that case, replace the battery with a new one immediately. Otherwise, the metronome may work improperly.

- **How to replace the battery**

1. Be sure to press the power button ① to turn off the metronome.

2. Loosen and remove the three screws fixing the rear cover.

3. Open the rear cover.

4. Remove the battery clamp screw, and take out the old battery.

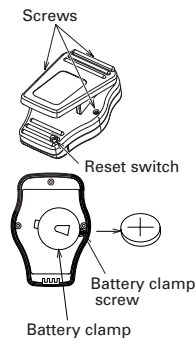
5. Set the new battery inside the white circle, checking that the (+) and (-) terminals are properly set.

6. Set the battery clamp, and tighten the screw to fix it securely.

7. Close the rear cover, and tighten the three screws to fix it.

8. Pinch open the clip, and push the reset switch ⑨ with a tip of a ball-point pen or something that has a sharpened tip.

Be sure to perform this resetting procedure. Otherwise, the metronome may work improperly. In case the metronome does not work properly while in use, also push the reset switch ⑨ to return it to normal.




\* Be sure to set the (+) and (-) terminals of the battery properly. Otherwise, a malfunction will result.

\* When the battery is replaced with a new one, tempo, beat/rhythm and volume settings you have made are all erased. Set them as desired before using the metronome.

\* When disposing of the old battery, observe the regulations of the authorities concerned.

\* Keep the old battery and the battery hatch beyond the reach of children. If a child swallows either of them, consult the doctor immediately.

## SPECIFICATIONS

1. Display : Liquid crystal display
2. Speaker : Piezoelectric speaker
3. Tempo range : 30 ~ 250 times/min.
4. Beat/rhythm range : 0 ~ 7, 
5. Volume : 4-level volume control (no sound, low, mid and high)
6. Accuracy :  $\pm 3\%$
7. Power supply : Lithium battery CR2025, 1 piece
8. Overall dimensions : 40 (W) x 57 (H) x 35 (D) mm
9. Weight : Approx. 30 g (including battery)

\* The design and specifications are subject to change without prior notice for product improvement.