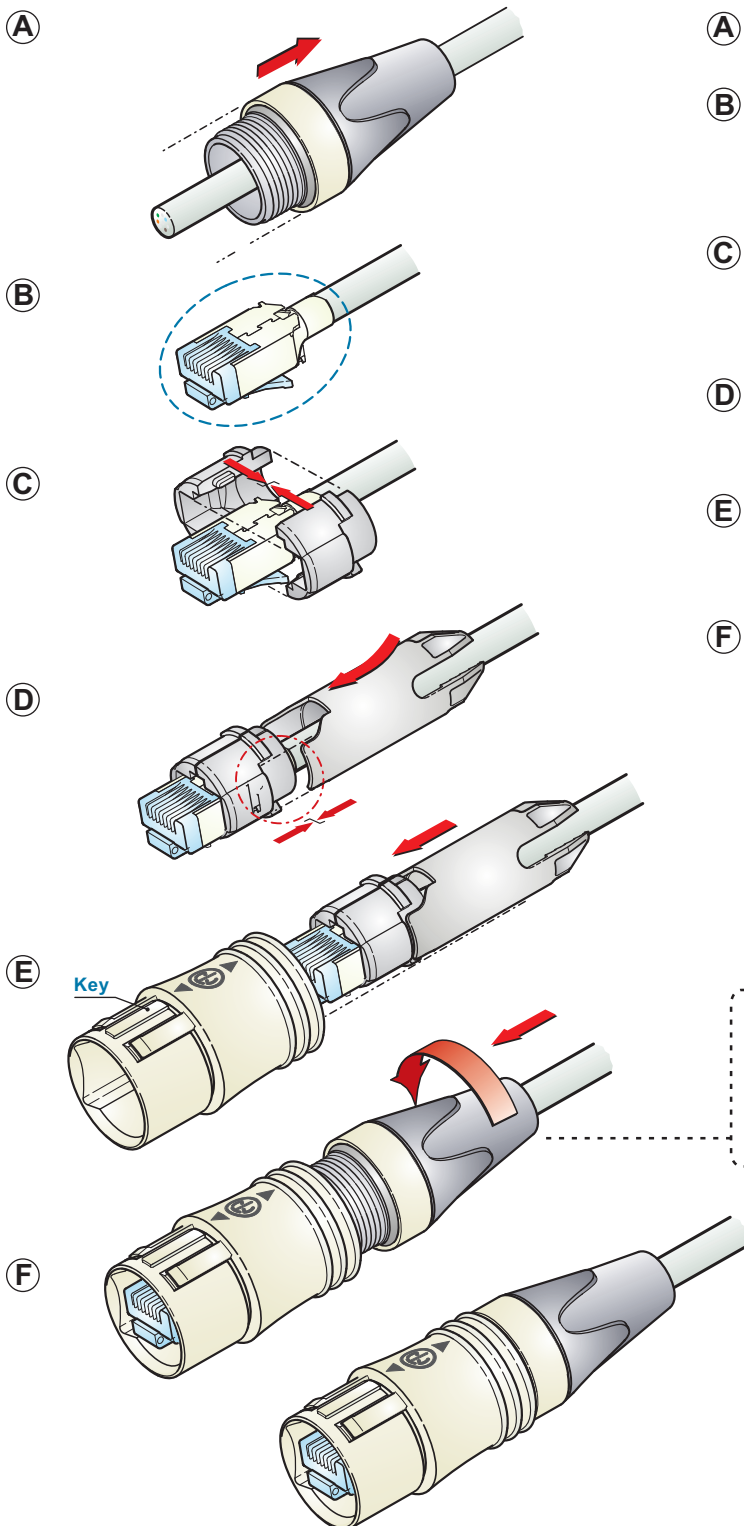




# ASSEMBLY INSTRUCTION

## NE8MC6 | etherCON Cable Connector CAT 6



**A** Slide the boot onto the cable.

**B** Terminate RJ45 connector on the cable.  
See following pages.

Press the locking latch of the RJ45 and place the  
**C** two adapters onto the RJ45.  
**Pay attention: Hold the brackets together.**

Put chuck onto the cable.  
**D Attention: Pay attention to the guiding key.**

Slide RJ45 and chuck together into the housing.  
**E Pay attention to the plug latch which has to be on the opposite side of the key.**

Finish the assembly by turning the bushing onto the  
**F** connector. Screw bushing fully up to the end.

### Suitable cables:

AWG 22 to 28 solid or stranded conductors with an insulation. O.D. 0.037" / 0.95 mm to 0.047" / 1.07 mm.  
Jacket: O.D. 0.22" / 5.5 mm to 0.25" / 6.5 mm

NEUTRIK AG  
NEUTRIK Zürich AG  
NEUTRIK USA Inc.  
NEUTRIK (UK) Ltd.

LI T: +423 / 237 24 24 F: +423 / 232 53 93  
CH T: +41 44 / 736 5010 F: +41 44 / 736 5011  
USA T: +1 732 / 901 9488 F: +1 732 / 901 9608  
UK T: +44 1983 / 811 441 F: +44 1983 / 811 439

NEUTRIK Vertriebs GmbH DE/NL/AT T: +49 8131 / 280 890 F: +49 8131 / 280 830  
NEUTRIK France FR T: +33 1 / 4131 6750 F: +33 1 / 4131 0511  
NEUTRIK Tokyo Ltd. JP T: +81 3 / 3663 4733 F: +81 3 / 3663 4796  
NEUTRIK Hong Kong Ltd. HK T: +852 / 2687 6055 F: +852 / 2687 6052

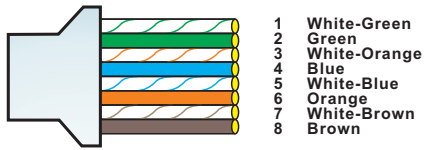
Draft. Nr.: BDA 194 / 3102M1581 | Update: 20.05.2010 | Data subject to change without prior notice. ©2010 NEUTRIK®. ALL RIGHTS RESERVED.

[www.neutrik.com](http://www.neutrik.com)

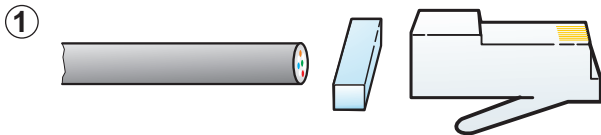
**NEUTRIK**



**B** Terminate RJ45 connector on the cable.



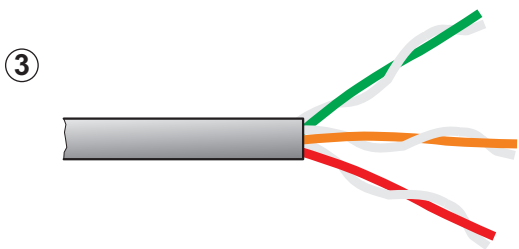
Consider cable end termination usually straight - thru cable acc. TIA 568A.



Assembly of wire, load bar and plug.



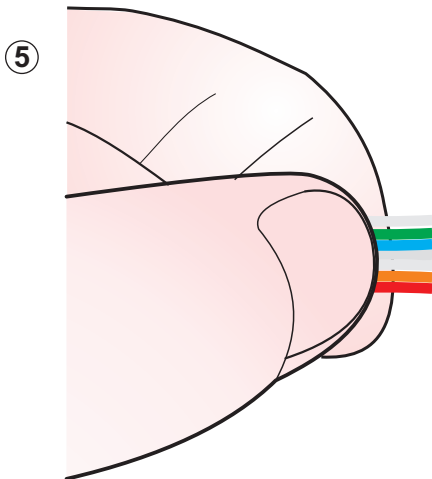
Strip outer jacket 20 mm long.



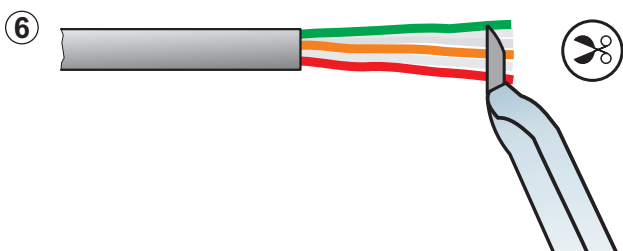
Separate pairs in bundles.



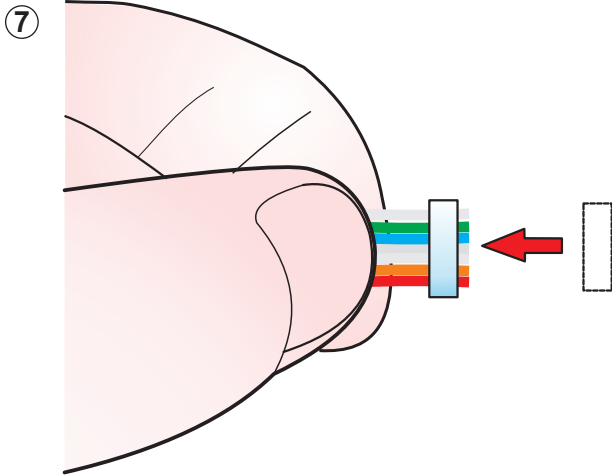
Straighten and separate into individual leads.



Organize leads into proper order and trim edge to be even.



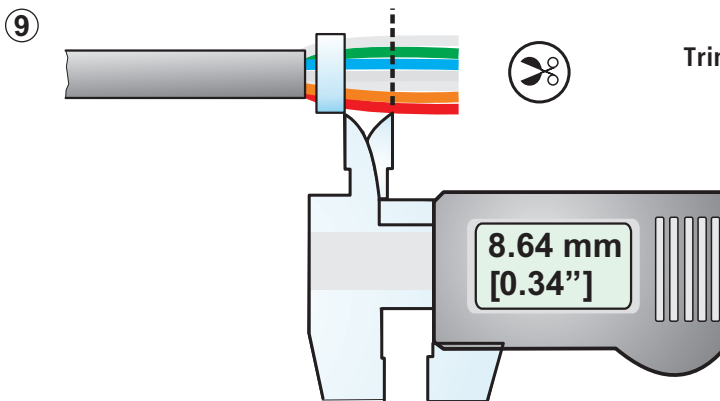
Wire lead ends shown organized and trimmed.



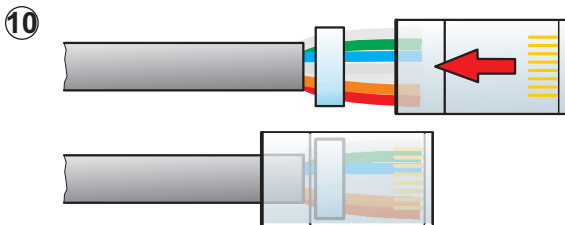
Insert Load Bar and load Wires into open end.



Slide Load Bar into position against Jacket.

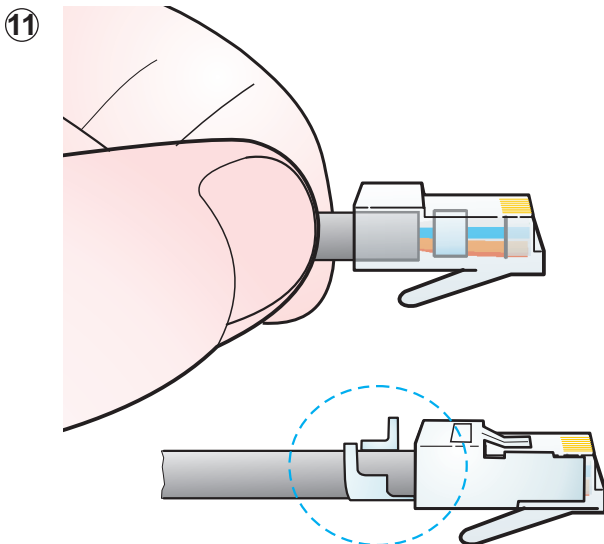


Trim leads so Jacket is 8.64 mm / 0.34" from edge.



Insert Wires and Load Bar into Plug and push full forward.

Terminate Plug with Hand Terminator MOLEX #62202-0500 or any other suitable crimp tool.



In the case of using shielded cable crimp shield to connector.