



Before using this product, please carefully read "USING THE UNIT SAFELY" and "IMPORTANT NOTES" (the leaflet "USING THE UNIT SAFELY" and the "Owner's Manual"), as well as the notes in the Setup Guide in order to ensure that you use the product correctly. After reading, keep the document(s) where it will be available for immediate reference.

© 2016 ROLAND CORPORATION

### 1 Check the included items

As soon as you open the package, check to see that all items are included. If anything is missing, please contact your dealer.  
\* Use a commercially available kick pedal.

#### Drum sound module and pads

- Hi-hat control pedal (FD-9)
- Kick pad
- Cymbal pad for crash/ride/hi-hat (CY-S1) x 3
- Pad for snare (PDX-8)
- Pad for tom x 3 (PDX-6)
- Drum sound module (TD-1)
- Drum sound module holder
- Connection cable
- AC adaptor
- Pad mount x 4

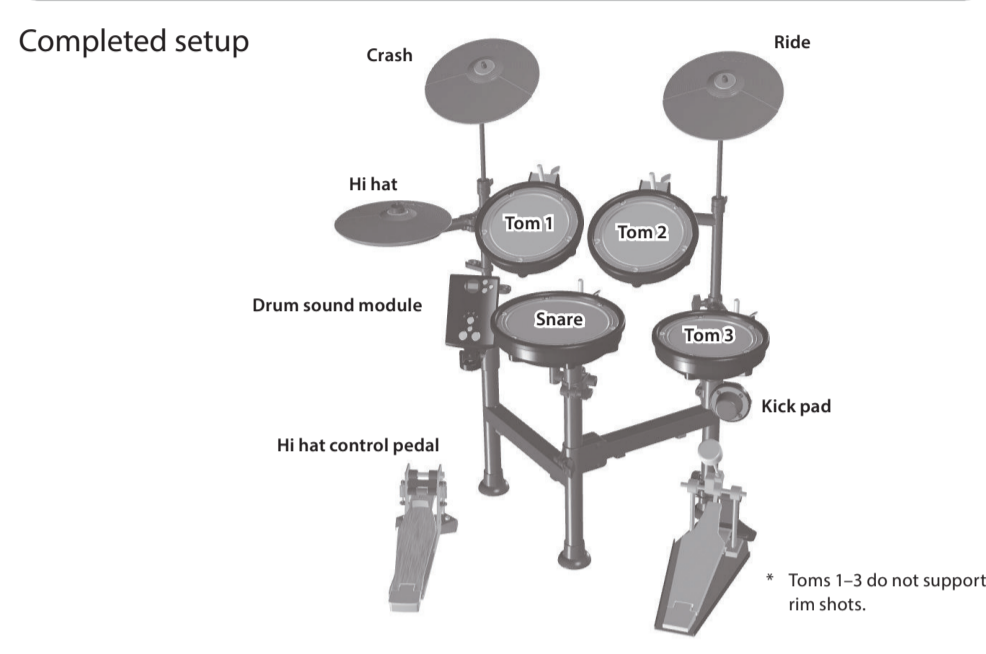
Manual set  
 Setup Guide (this document)  
 Owner's Manual

#### Stand

- Stand
- Cable clip A
- Cable clip B x 4
- Pedal plate
- Drum key
- Kick pad attachment bolt

### Tips for assembly

When assembling the stand, it's best to assemble the stand in its approximate position; then after you've assembled the entire stand, adjust the positions and angles of the pads.



### NOTE Caution during assembly

- Do not open the stand frame wider than 90 degrees in order to maintain stability.
- Position all pipes as instructed in this Setup Guide in order to maintain the proper balance of the entire kit.
- When folding or assembling the stand, please be careful not to get your fingers pinched between the movable part and the unit. In places where small children are present, make sure that an adult provides supervision and guidance.
- Do not pull hard on any connection cables.
- Follow all procedures in this Setup Guide regarding set up or folding the stand. Pipes folded incorrectly may damage or stretch the cables.
- Handle the cymbals with care when adjusting the cymbal arms. A falling cymbal could injure you.
- Repeatedly folding and setting up the stand may cause the various bolts to loosen. Before you perform, verify that the bolts and hand knobs are not loose.
- Take care when transporting the system in the folded state. Use caution for protruding parts such as the pedal plate and hand knobs.
- The pipes and the cymbal rods will come out if they are extended too far.

### 2 Open the stand

**NOTE**  
 • Take care that the stand does not fall over during assembly.  
 • Take care not to pinch your fingers while setting up or storing the stand.

- Loosen the hand knob and open the stand.  
 Do not open wider than 90 degrees.
- Tighten the hand knob to secure the stand.  
 As shown in the illustration, do not open the stand wider than 90 degrees. If the stand is opened too wide, it will be less stable, and may fall over.

### 3 Extend the pipes

- Loosen the hand knobs at the locations shown, and extend the pipes.
- After you've extended the pipes, tighten the hand knobs to secure the pipes position.

Extend this to approximately twice the length of A.

**NOTE**  
 • The pipes will come out if they are extended too far.

### 4 Extending the cymbal rods

- Use the drum key to loosen the bolt of the movable section.
- Tilt up the tips of the cymbal rods (two locations).
- Release the lever at the top of the pipe, and pull out the cymbal rod.
- Tighten the lever to secure the rod.

Tilt up the cymbal rod.

Use the drum key to loosen.

Release the lever and pull out the cymbal rod.

### 5 Arm and Mount positioning

- Loosen the hand knobs and spread open the hit hat arm and sound module mount as shown in the illustration.
- Position the snare arm as shown in the illustration.
- Loosen the knob and position the tom arm as shown in the illustration.

### 6 Attach the snare and toms

- Attach the rods to the pad mounts (four locations).  
 Use a drum key to loosen/tighten.
- Attach the pad mounts as shown in the illustration below (four locations).  
 Attach the pad mount so that the rod is on the back.
- Attach the snare (PDX-8) and toms 1-3 (PDX-6).
- Firmly tighten the snare and tom knobs.

**MEMO**  
 Use a drum key to loosen/tighten.

### 7 Attach the hi-hat

- Remove the nut and attach the hi-hat pad as shown in the illustration.  
 Pay attention to the direction of the rubber part attached to the tip of the hi-hat arm.
- Tighten the nut to obtain the desired amount of sway.
- Place the hi-hat control pedal below the hi-hat.

### 8 Attach the cymbals

- Place the cymbals onto the tip of the cymbal rods (two locations).  
 Align the cymbal with the narrow part of the cymbal rod, and insert the rod firmly.

**MEMO**  
 Place the cymbals onto the tip of the cymbal rods, and firmly press them to secure the position, as shown in the illustration.

### 9 Attach the kick pad

\* Use a commercially available kick pedal.

- Rotate the kick pad and pedal plate holders as shown in the illustration.
- Attach the kick pad as shown in the illustration, and firmly tighten the kick pad attachment bolt.  
 Kick pad attachment bolt (included with the stand).  
 With the OUTPUT jack facing out, use the drum key to securely tighten the bolt.
- Loosen the bolt and attach the pedal plate as shown in the illustration (do not tighten the bolt yet).  
 Loosen the bolt, then insert the pedal plate (don't tighten the bolt).
- Kick pedal positioning.  
 Mount the kick pedal to the pedal plate and so that the beater strikes the center of the kick pad.  
 In order to this, you may have to loosen the knob on the kick pad to adjust the height and angle.  
 Once the pedal is in the desired playing position, tighten the 2 knobs and bolt.  
 Verify that the plate and pedal firmly contact the floor without any gap.  
 Install the kick pedal securely.  
 Verify that the pedal plate firmly contact the floor without any gap.

**NOTE**  
 • Take care not to pinch your fingers.  
 • If you're not using a commercially available kick pedal, make the pedal plate firmly contact the floor without any gap.

### 10 Attach the drum sound module (TD-1)

- Attach the drum sound module holder to the drum sound module.  
 Use the bolt of the drum sound module holder to attach it as shown in the illustration.
- Attach the drum sound module to the pipe at the position shown in the illustration.  
 Use the bolt of the bottom of the drum sound module holder to attach it as shown in the illustration.

**MEMO**  
 You can also position the drum sound module one hole further back.

- Adjust the height of the drum sound module.  
 When you've finished making adjustments, tighten the hand knob firmly.  
 Set the height of the drum sound module so that you can see the screen.

### 11 Connecting the cables

- Connect the cable to the drum sound module as show in the illustration.  
 Each cable has a label indicating the pad to which it should be connected.
- Connecting cables to the pads.  
 1. As shown in the illustration, pass the hi-hat, tom 1, and crash cables through the cable holder and connect the cables to the pads.  
 2. Pass the rest of the cables through the cable holder.  
 3. Locate the hi-hat controller cable and connect to the hi-hat control pedal.  
 4. Insert the remaining cables, into two of the provided cable clips B and attach the cable clips B to locations (two locations) on the frame as shown in the illustration.  
 5. Fix the snare cable in place using the supplied cable clip A and connect it to the snare pad.  
 6. Insert the cables, into the remaining two cable clips B and attach the cable clips B to locations (two locations) on the frame as shown in the illustration.  
 7. Locate the cable for the kick pad and connect it to the kick pad.  
 8. Pass the rest of the cables through the cable holders at location.  
 9. Locate and connect the cables for tom 2, tom 3, and the ride cymbal.  
 10. Locate the cymbal clamps for the ride and crash cymbals and attach the cable to them as shown in the illustration.

**NOTE**  
 • Firmly insert the plugs all the way into the jacks.  
 • Pass the cables through the cable holders so that they will not interfere with your playing. Pass the cables through the cable holders one at a time.

Seen from behind

Fasten the hi-hat cable to the clamp.

Fasten cable with clamp.

Provide slack.

Fasten the snare cable to the snare from the front of the stand.

**NOTE**  
 • When attaching cable clips B, take care not to insert your finger into the hole on the bottom of the stand. The edge might cut your finger, causing injury.

**NOTE**  
 • If you pass the cable behind the snare, it will be pinched when you store the system, causing the cable to break.

### 12 Connect the AC adaptor and speakers

**DC IN jack**  
 Connect the included AC adaptor to the DC IN jack.  
 Place the AC adaptor so the side with the indicator (see the illustration) faces upwards and the side with textual information faces downwards. The indicator will light when you plug the AC adaptor into an AC outlet.

**OUTPUT/PHONES jack**  
 Connect your amplified speaker or headphones to the OUTPUT/PHONES jack.

**NOTE**  
 • To prevent malfunction and equipment failure, always turn down the volume, and turn off all the units before making any connections.  
 • Pass the cord from the AC adaptor through the cable holder, so it is held in place against the stand. This way, even if someone accidentally tugs on the cord, you won't have to worry about the plug getting pulled out, which would cause a sudden loss of power. And, you can also prevent the application of an undue amount of force to the AC adaptor's connector.

### 13 Final set-up adjustments

**NOTE**  
 • When you operate the kick pedal or the hi-hat control pedal, please be careful not to get your fingers pinched between the movable part and the unit. In places where small children are present, make sure that an adult provides supervision and guidance.

Tilt it forward slightly.

Allow for 3-6 cm (1-3/16"-2-3/8") of space between tom 1 and tom 2.

Place at a slightly lower position than the crash cymbal.

The tom 1 and tom 2 should be at the same height.

Adjust the angles so that you can perform comfortably.

The snare and tom 3 should be at the same height.

Position so there is 12-15 cm (4-3/4"-6") of space between the snare and tom.

The hi-hat should be placed about 20 cm (7-7/8") higher than the snare.

You can attach your drum key to the cable holder.

Place directly below the hi-hat.

Verify that the plate and pedal firmly contact the floor without any gap.

Verify that the pedal plate firmly contact the floor without any gap.

**NOTE**  
 • To prevent damage to your floor or carpet, and to ensure a stable setup, we recommend that you use a separately sold drum mat (TDM series).

### Adjust the head tension

Adjust each tuning bolt little by little in the illustrated order so that the head is tensioned evenly.

Adjusting the head tension affects only the head response, and does not change the pitch of the sound as it would on an acoustic drum.

### Adjust the hi-hat control pedal

#### Using the anchor bolts

If you're using this unit on a drum mat (TDM series) or on carpet, extending the anchor bolts will secure the unit in place, making it easier for you to perform.

When using on the drum mat or carpet

When using on the floor

• When used on flooring, the anchor bolts may damage the floor.  
 • The tips of the anchor bolts are sharp. Handle with care.

#### By adjusting the spring

You can lighten the feeling by removing either the left or the right spring.

• Take care not to pinch your finger when removing or installing a spring.

Detach upper hook.

Detach lower hook.

#### Adjusting the feeling will change the amount of noise/vibration

Be aware that removing a spring will increase the noise/vibration when performing.

Springs	Two	One
Noise/vibration	Less	More
Feeling	Heavy	Light



**Watch the Quick Start Video**  
This video explains how to use the TD-1KPX.  
<http://roland.cm/td-1kpx>

Before using this product, please carefully read "USING THE UNIT SAFELY" and "IMPORTANT NOTES" (the leaflet "USING THE UNIT SAFELY" and the "Owner's Manual"), as well as the notes in the Setup Guide in order to ensure that you use the product correctly. After reading, keep the document(s) where it will be available for immediate reference.

© 2016 ROLAND CORPORATION

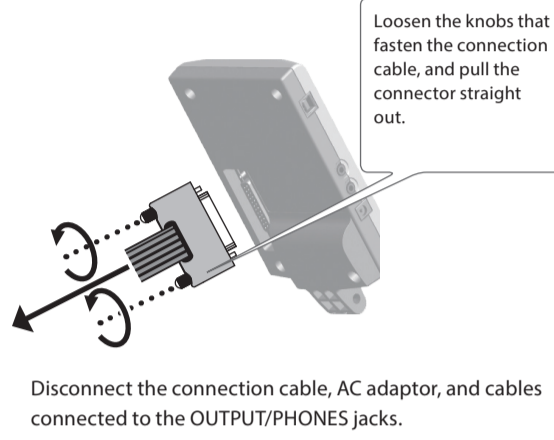
### Folding for Storage

#### 1 Disconnect the cables and pedals

**NOTE**

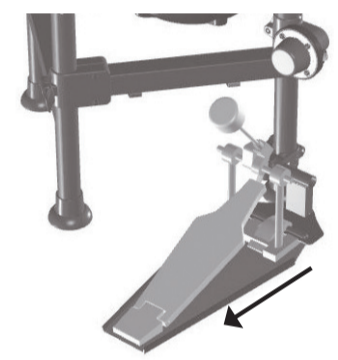
- Take care not to allow the system to tip over when folding it up.
- When setting up or storing the stand, please be careful not to get your fingers pinched between the movable part and the unit. In places where small children are present, make sure that an adult provides supervision and guidance.

- Turn off the power.
- Disconnect all cables from the drum sound module.



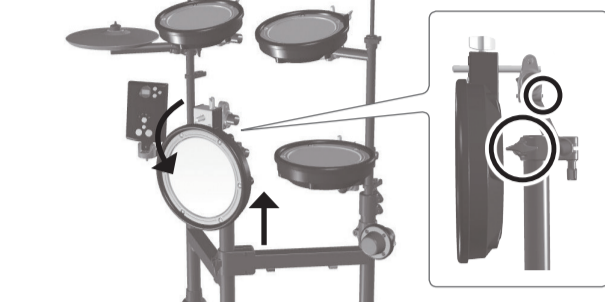
- Disconnect the hi-hat control pedal cable.
- You can fasten the disconnected cable to the cable holder.

- Remove the kick pedal.

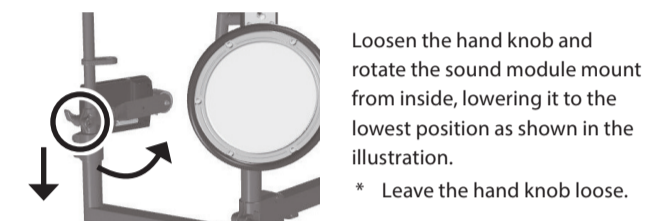


#### 2 Fold the left side

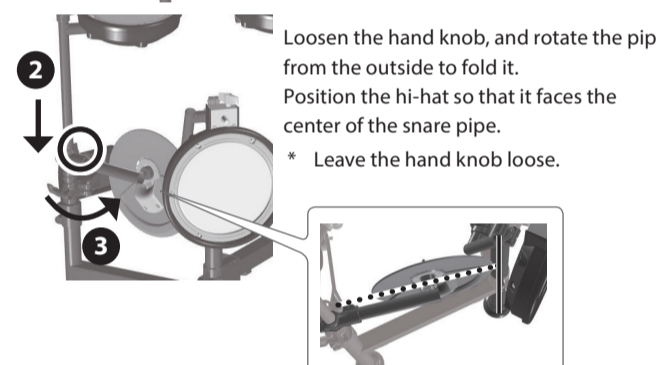
- 1. Fold the snare.**  
Loosen the hand knob and raise it to the highest position; then use a drum key to loosen the bolt and put the snare in a vertical position. When the position is correct, tighten the hand knob firmly.



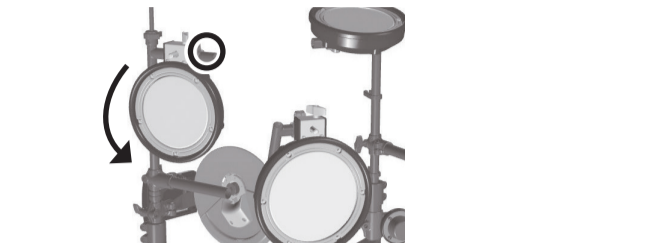
- 2. Fold the drum sound module.**  
Use a drum key to loosen the bolts of the drum sound module and sound module mount, and fold the drum sound module to a vertical position. When the position is correct, tighten the bolt firmly.



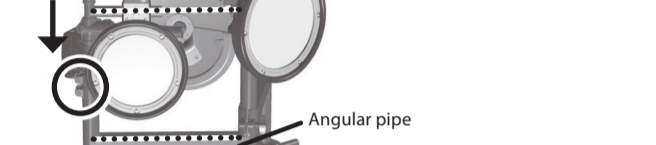
- 3. Fold the hi-hat.**  
Use the included drum key to loosen the hi-hat arm bolt, and rotate it so that the hi-hat is vertical. When the position is correct, tighten the bolt firmly.



- 4. Fold tom 1.**  
Use the drum key to loosen the tom bolt, and position it vertically. When the position is correct, tighten the bolt firmly.



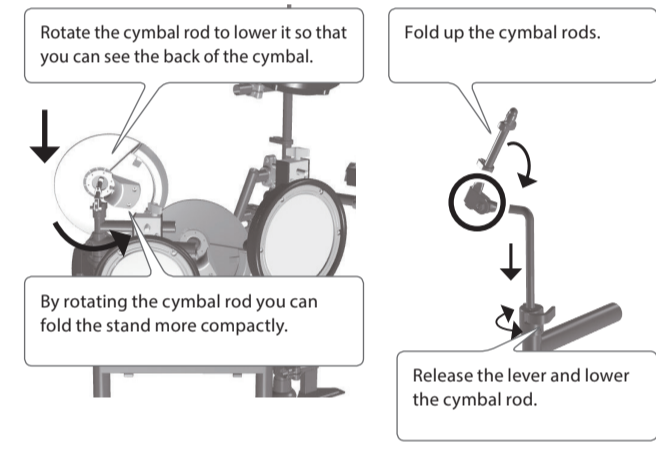
- 5. Lower the pipe while aligning the arm to the position of the stand's angular pipe.**  
Loosen the hand knob, and lower it all the way down. When it is fully lowered, firmly tighten the hand knob and the hi-hat hand knob that you loosened.



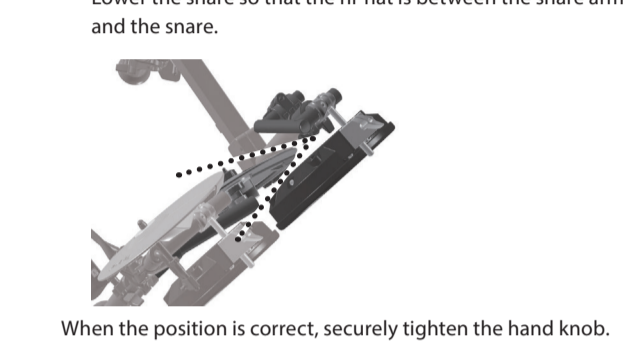
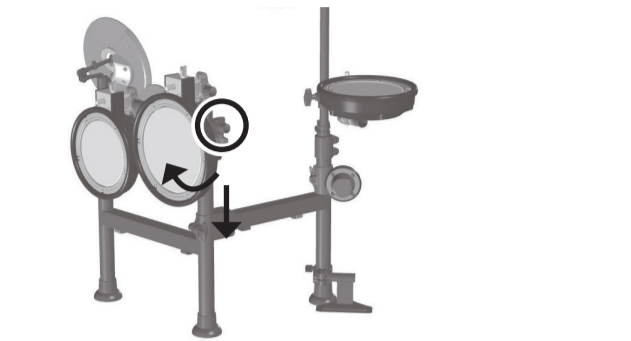
**NOTE**

- Take care not to pinch the cable when lowering the pipe.

- 6. Fold the cymbal rod and lower it.**  
Use a drum key to loosen the cymbal rod bolt, and fold the cymbal. After folding it, securely tighten the bolt. Open the pipe lever, and rotate the cymbal rod to slowly lower it so that you can see the back of the cymbal. After lowering the rod, securely tighten the lever.



- 7. Fold the snare.**  
Loosen the hand knob to align the snare with the orientation of the tom, and then lower the snare until the pad mount touches.



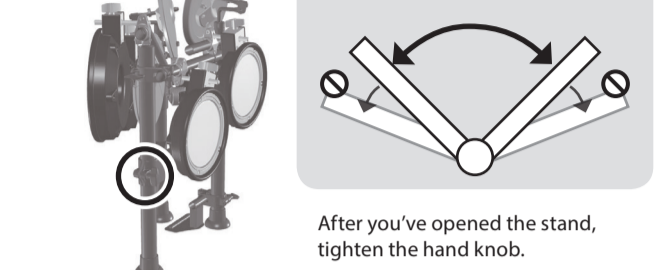
### Extending for Use

#### 1 Opening the right side

**NOTE**

- Take care not to allow the system to tip over when setting it up.
- When setting up or storing the stand, please be careful not to get your fingers pinched between the movable part and the unit. In places where small children are present, make sure that an adult provides supervision and guidance.

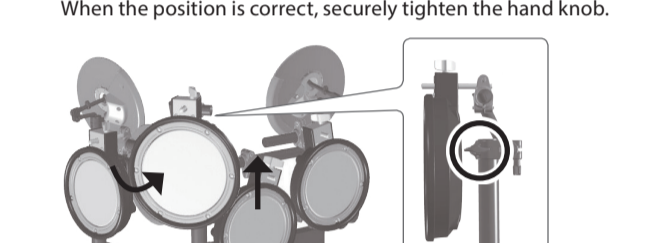
- 1. Extend the stand.**  
Loosen the hand knob, and open to 90 degrees.



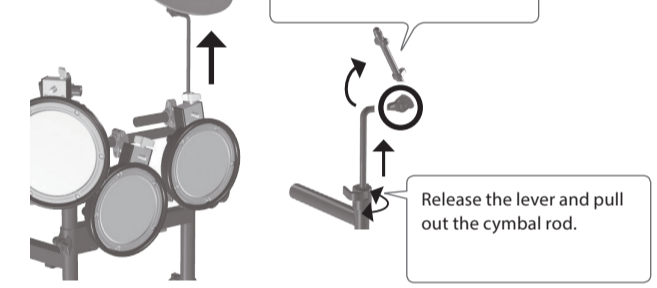
- 2. Open the sound module mount.**  
Loosen the hand knob, and open the sound module mount.



- 3. Raise the snare, and position it at the front.**  
Loosen the hand knob, then raise the snare all the way and position it at the front. When the position is correct, securely tighten the hand knob.



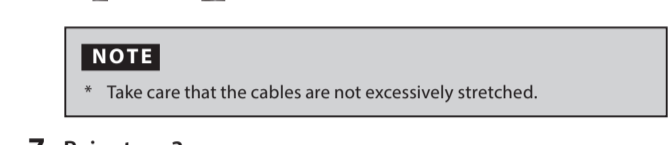
- 4. Raise and set up the cymbal rods.**



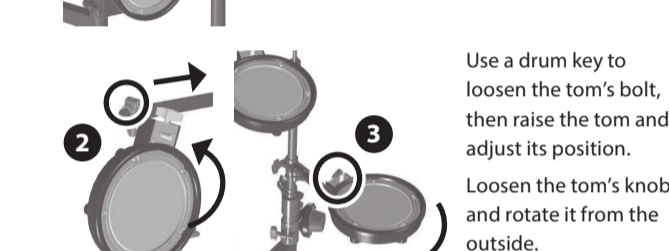
- 5. Raise tom 2.**  
Use a drum key to loosen the tom's bolt, and raise tom 2.



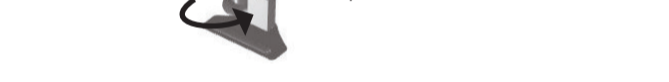
- 6. Extend the pipe, and position tom 2 at the front.**  
Loosen the hand knob of tom 3 before you extend the pipe. When the position is correct, securely tighten the hand knob of the pipe to fasten it. For the height of tom 2, refer to "3. Extending the pipe" in the section on assembly.



- 7. Raise tom 3.**  
Rotate the tom arm from the outside. Adjust the height of the tom. Tighten the hand knob to secure the tom arm.



- 8. Rotate the kick pad and the pedal plate.**  
Loosen the hand knobs, and adjust the position of the kick pad and the pedal plate. Tighten the hand knobs to secure the kick pad and the pedal plate position.

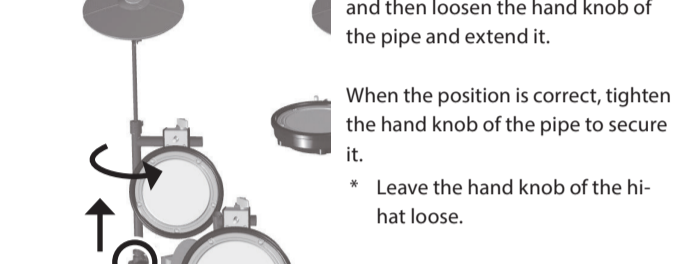


#### 2 Opening the left side

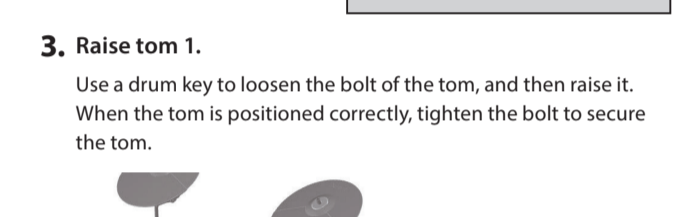
- 1. Raise and set up the cymbal rods.**



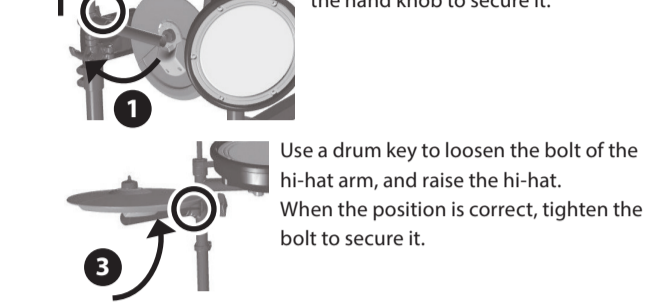
- 2. Extend the pipe so that tom 1 is in the front.**  
Loosen the hand knob of the hi-hat, and then loosen the hand knob of the pipe and extend it.



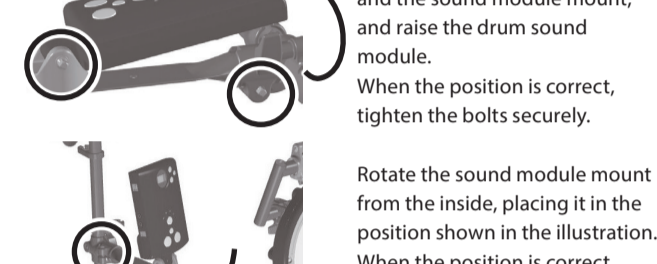
- 3. Raise tom 1.**  
Use a drum key to loosen the bolt of the tom, and then raise it. When the tom is positioned correctly, tighten the bolt to secure the tom.



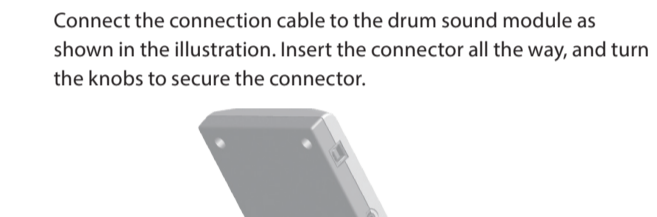
- 4. Raise the hi-hat.**  
Rotate the hi-hat arm. Adjust the height of the hi-hat. When the position is correct, tighten the hand knob to secure it.



- 5. Raise the drum sound module.**  
Use a drum key to loosen the bolts of the drum sound module and the sound module mount, and raise the drum sound module.

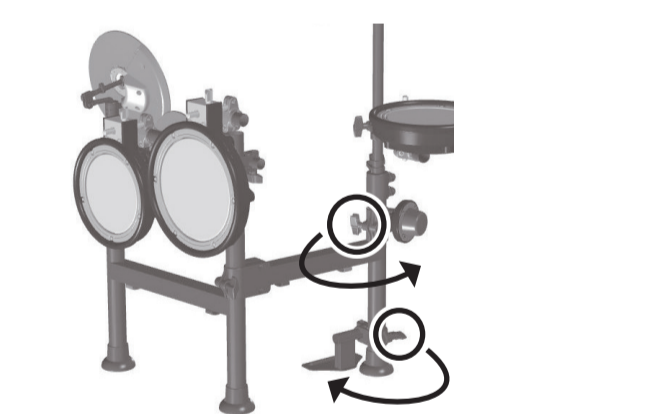


- 6. Connect the cable to the drum sound module.**  
Connect the connection cable to the drum sound module as shown in the illustration. Insert the connector all the way, and turn the knobs to secure the connector.

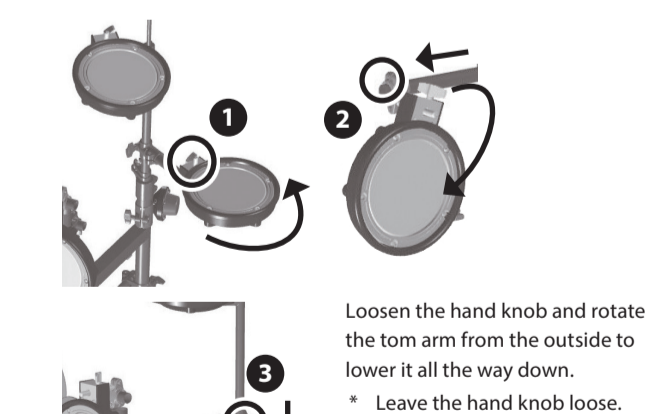


#### 3 Folding the right side

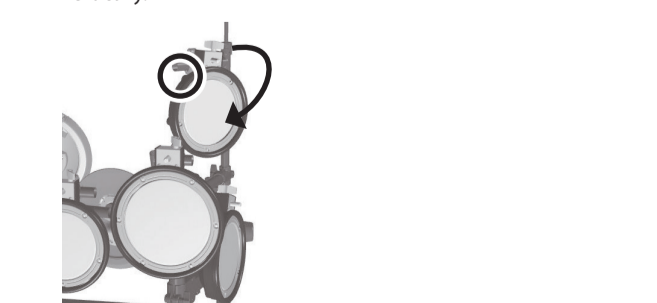
- 1. Loosen the hand knob, and rotate the kick pedal attachment plate toward the inside with the kick pad outside.**



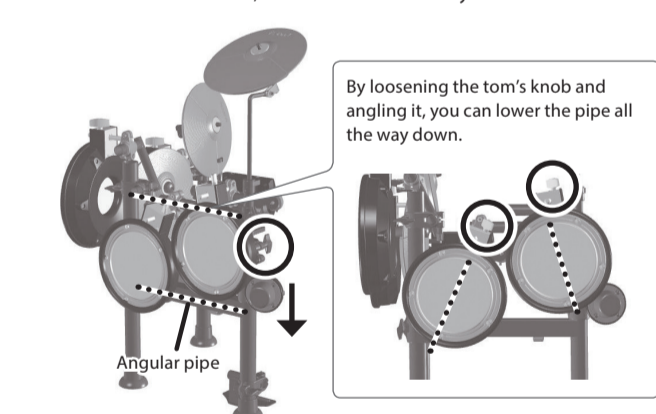
- 2. Rotate tom 3 and fold it.**  
Loosen the tom knob, and rotate it from the outside. Use a drum key to loosen the tom bolt, position the tom vertically, and move it to the end of the tom arm.



- 3. Fold tom 2.**  
Use a drum key to loosen the tom bolt, and position the tom vertically.



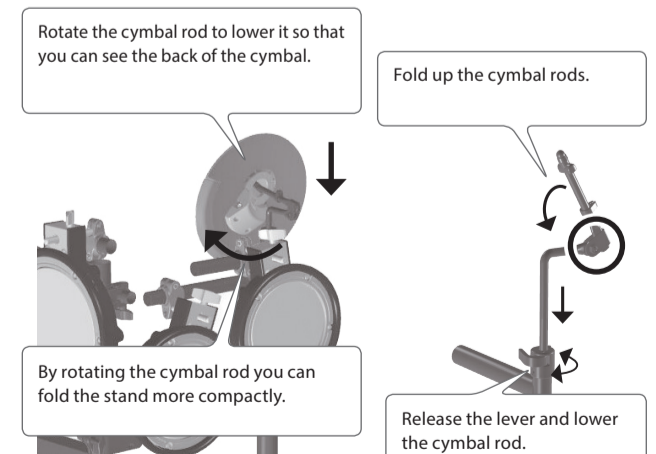
- 4. Lower the pipe while aligning the arm to the position of the stand's angular pipe.**  
Loosen the hand knob, and lower it all the way down.



**NOTE**

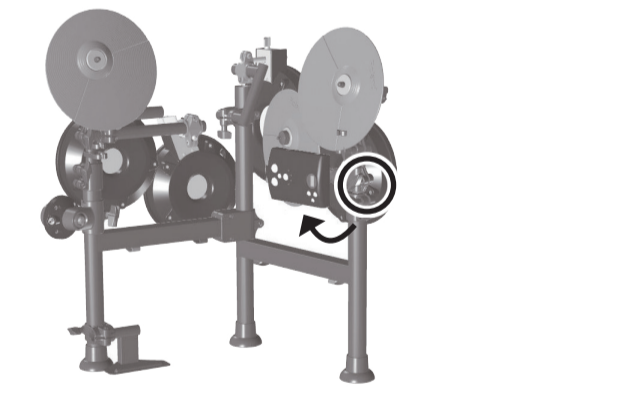
- Take care not to pinch the cable when lowering the pipe.

- 5. Fold the cymbal rod and lower it.**  
Use a drum key to loosen the cymbal rod bolt, and fold the cymbal. After folding it, securely tighten the bolt. Open the pipe lever, and rotate the cymbal rod to slowly lower it so that you can see the back of the cymbal. After lowering the rod, securely tighten the lever.

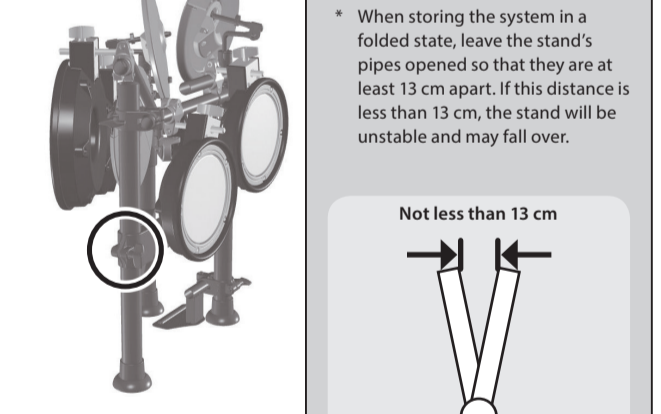


#### 4 Folding the stand.

- 1. Fold the sound module mount.**  
Loosen the hand knob, and fold the sound module mount inward. When the position is correct, securely tighten the hand knob.



- 2. Loosen the hand knob and fold the stand inwards.**



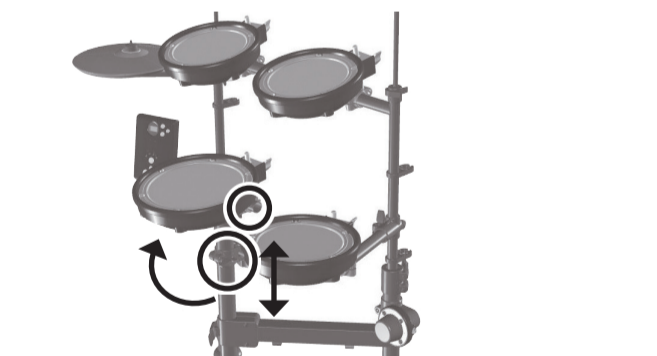
**MEMO**

For easy transportation, you can place the system in a carrying case (CB-TDP; sold separately) designed specifically for the Roland V-Drums Portable.

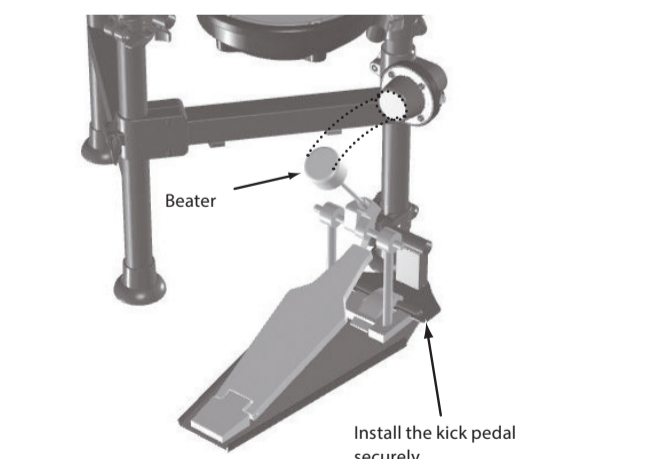


#### 3 Position the snare and pedals

- 1. Raise the snare and adjust its height.**  
Use a drum key to loosen the bolt, raise the snare, and loosen the hand knob to adjust the height. When the position is correct, tighten the bolt and the hand knob securely.



- 2. Kick pedal positioning.**  
Mount the kick pedal to the pedal plate and so that the beater strikes the center of the kick pad.

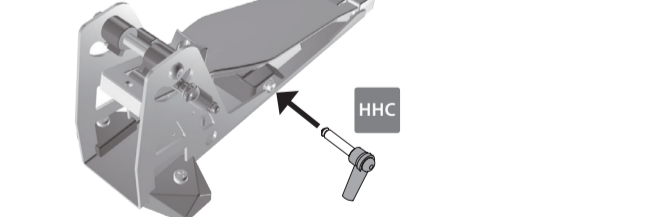


For details, refer to "9 Attaching the kick" in the section on assembly.

- 3. Position the hi-hat control pedal directly below the hi-hat.**



- 4. Connect the cable (HHC) to the hi-hat control pedal.**



- 5. Check the cable connections.**

For details, refer to "11 Connecting the cables" in the section on assembly.

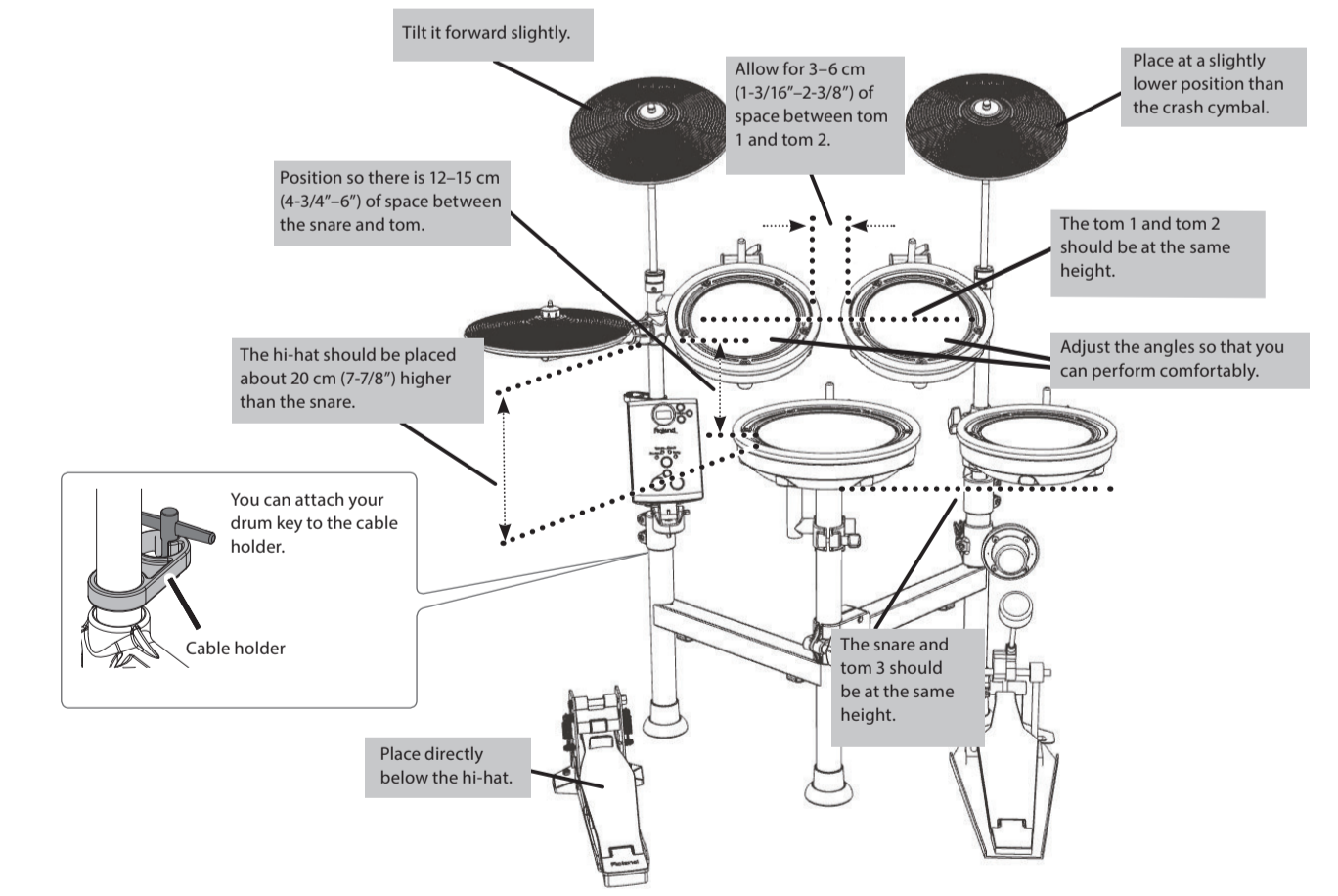
- 6. Connect the AC adaptor and speakers.**

For details, refer to "12 Connect the AC adaptor and speakers" in the section on assembly.

#### 4 Adjust the position and angle of the pads

**NOTE**

- Before every performance, check to make sure that none of the bolts or hand knobs are loose. Otherwise, if left untightened, it can be quite dangerous, since the stand could fall over during a performance, or a pad could come off.



\* To prevent damage to your floor or carpet, and to ensure a stable setup, we recommend that you use a separately sold drum mat (TDM series).