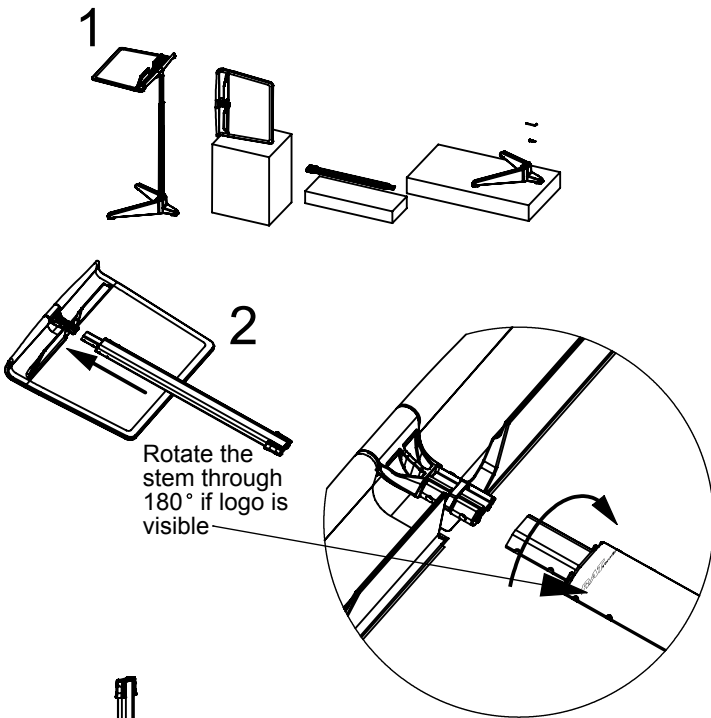


The Alto Stand

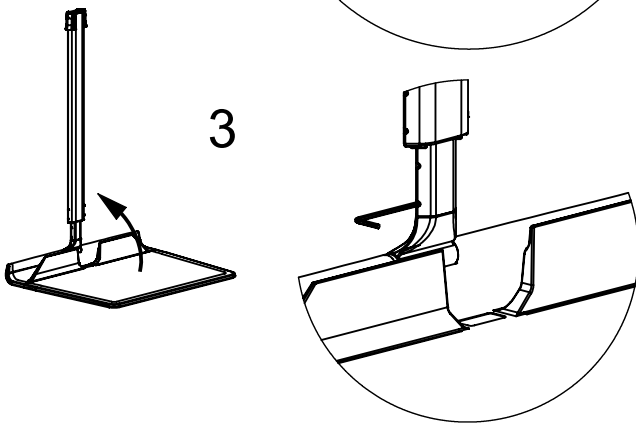
Assembly instructions

RATstands

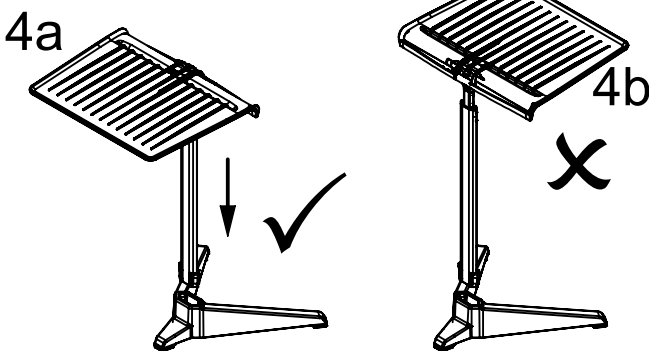
1. Check that you have all of the components required for your Alto stands. Stands supplied in 8 up packs are in 3 different boxes, one containing 8 tray assemblies, one containing 8 stem assemblies and one containing 8 base assemblies, 8 screws and 1 2.5mm hex key.



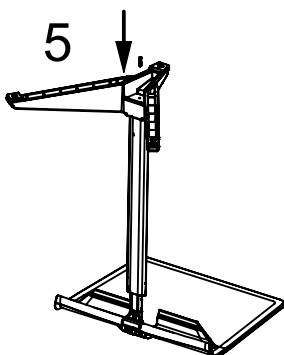
2. Insert the tray assembly into the stem assembly with the logo on the stem facing the tray. The stem is packed in its box with the inner stem extended slightly. **DO NOT COMPRESS THE STEM DURING STEPS 2 & 3.**



3. Swing the stem up to the vertical and use the 2.5mm hex key provided to tighten the grub screws within the tray joint, the screws are accessed through two holes in the stem as shown in the diagram.



4. Making sure that the tray is oriented as shown in 4a, push the stem firmly into the base. **DO NOT ORIENTATE THE TRAY AS SHOWN IN 4b.**



5. Turn the stand upside down and use the screw provided to secure the stem to the base.