

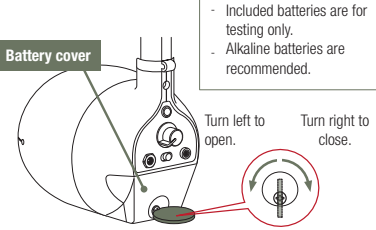
# INSTRUCTION MANUAL - OTAMATONE DELUXE

## Step 1

### Put new batteries in the battery box.

- Before using the product, please take out the cushioning material provided for maintaining the shape of the mouth.
- Discard the material.

- 1 Hold the battery cover and open it with a right size coin (or an equivalent item.)



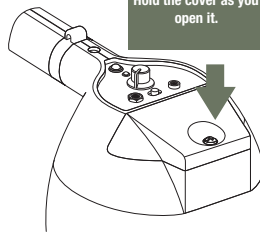
### How to change batteries:

#### Required batteries: 3x AA

- Included batteries are for testing only.
- Alkaline batteries are recommended.

**Caution:** The battery cover may spring open as you loosen it. Keep your face away from it.

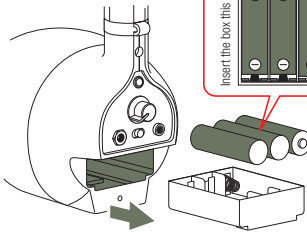
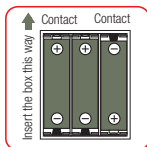
Hold the cover as you open it.



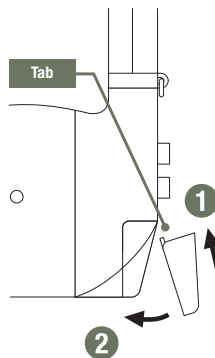
- 2 Take the battery box out and place batteries.

- Place batteries in the right directions
- Follow the directions shown on the bottom of battery box.
- Change the batteries when the sound gets softer or intermittent

**!** Disconnect the AC adapter from the unit before changing the batteries



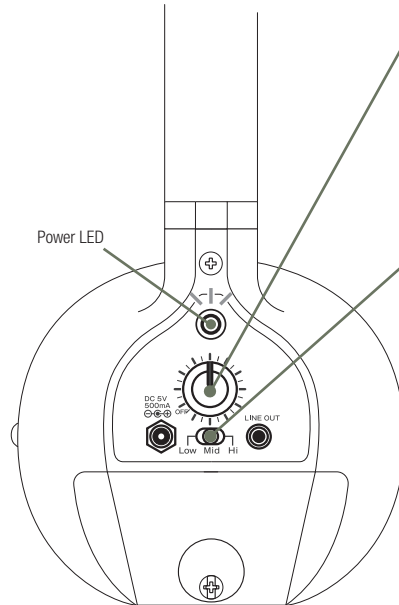
- 3 Attach the cover as shown, push to close, and tighten the screw



## Step 2

### Set up the Otamatone for playing

- 1 Turn the Power/volume control switch to the right until it clicks; LED light will come on.
- 2 Set the Octave switch to the desired level.



### Power / Volume control switch

- Turn the switch toward the right to turn the power on and to increase the volume.
- Turn it toward the left to decrease the volume.
- Turn it all the way to the left until LED light comes off to turn the power off.

### Octave switch

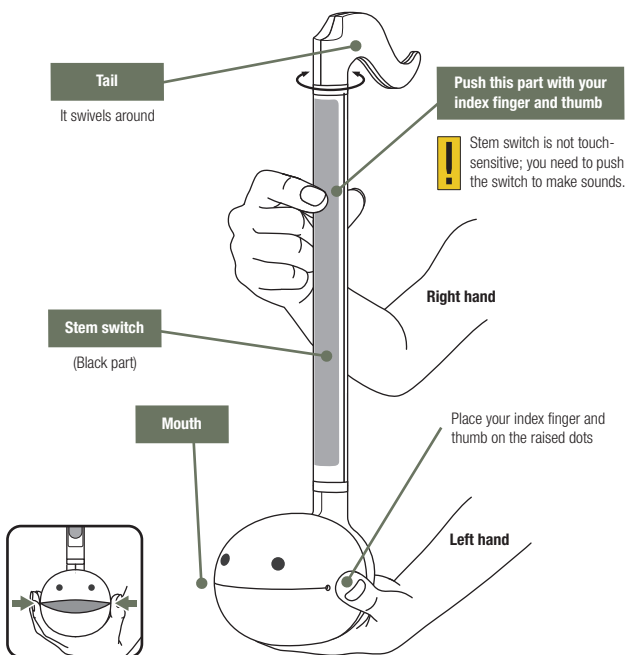
- Set to the desired level.

### Low / Mid / Hi

**Hint to make the batteries last:** Turn the power/volume switch off until it clicks after playing

## Step 3

### Hold the Otamatone

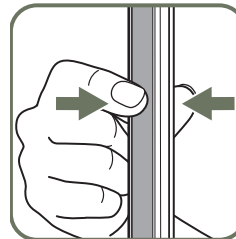


Push raised dots to open the mouth.

Left-handed persons may want to switch hands.

## Step 4

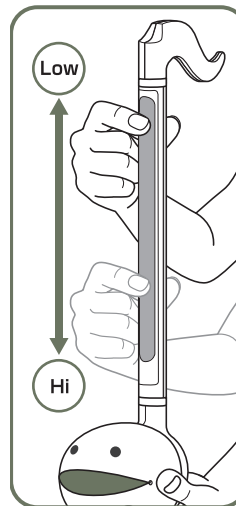
### Techniques! - Try different techniques!



### Push Technique

Push the Stem switch anywhere! This will make „mmm“ sound. Push different places and the sound will change too.

**!** Push the Stem switch with your index finger and thumb.



### Portamento Technique

Push and hold the Stem switch. Slide the fingers up and down. This will make „peooow“ sound.

**!** Push a bit harder and slide to make sure the sound does not break.

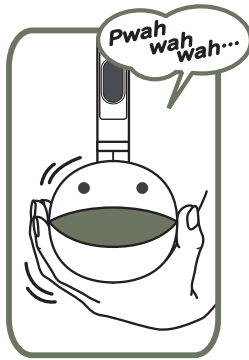
After mastering the technique, you can adjust the pressure.

\* Change the Octave switch to try a different pitch.

# INSTRUCTION MANUAL - OTAMATONE DELUXE

## Step 5

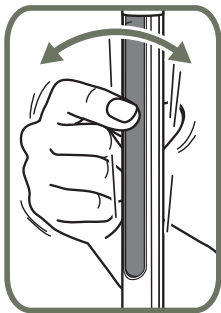
**Techniques!** - Try different techniques!



### Wah Wah Technique

While pushing the Stem switch, open and close the mouth. The sound changes from „woo“ to „wah“. Repeat this to make „wah wah wah“.

◀ **This will vary the sound . The opening and the closing of the mouth entertains everyone!**



### Vibrato:

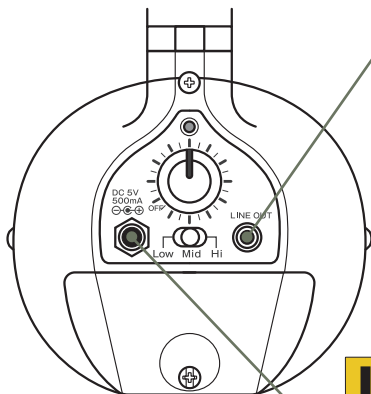
A tremulous or pulsating effect produced in an instrumental or vocal tone.

Vibrate the Stem while doing the Push technique. The sound changes according to the vibration.

Mouth Technique does not work while using the headphones

## Step 7

**How to connect Headphones an AC adapter** - No headphones or AC adapter included.



### 3.5mm Stereo mini Jack

This is for 3.5mm stereo mini plug. You can connect your Headphones here.

- You will hear the sound from the speaker while using headphones.
- Mouth Technique does not work while using headphones.
- Set the volume low first and then adjust it while using headphones to protect your hearing.



It's not unusual to hear some noises from the amplifier or speakers

While using headphones, listening at high volume for extended periods of time may cause hearing impairment.

### Note about AC adapter:

Use only the specified AC adapter approved for use with this product. We assume no responsibility whatsoever for any damage or loss of the product and/or AC adapters caused by the use of inappropriate adapters or by mishandling of adapters.

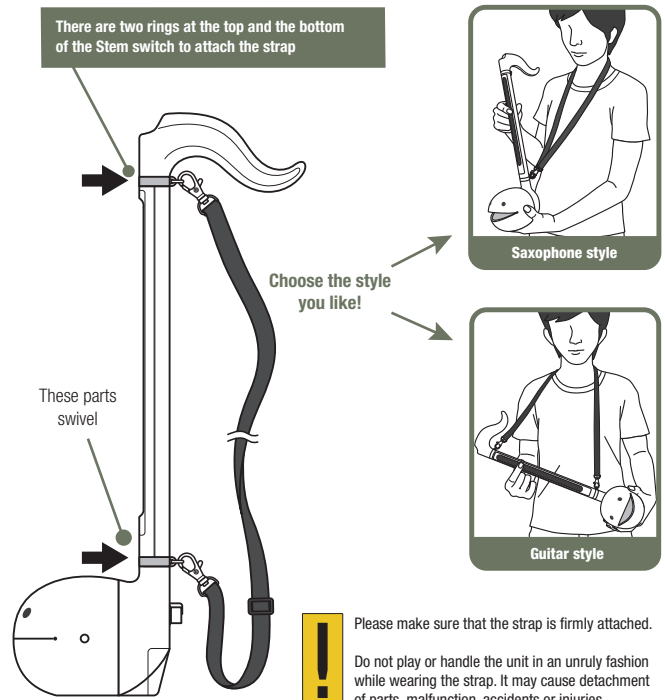
### DC5V jack

AC adapter specifications:

- Input: AC100 - 240V, 50 - 60Hz
- Output: DC5V, Max 1A
- Output characteristics: Switching-mode (regulated output voltage) recommended DC plug size: 2.1mm / 5.5mm
- Plug polarity: Center positive (⊖ ⊕)

## Step 6

**Strap:** - Use the enclosed strap for carrying the unit and playing for a longer period of time .



## Important Safety Instructions

Safety instructions for using AC power source:

Mishandling of power source may cause fatal accidents or serious injuries.

- Check the voltage rating before you connect the adapter to an electrical outlet to ensure that the required voltage and frequency match the available power source.
- Use only the specified AC adapter approved for use with this product. Wipe off dust from the AC adapter plug to avoid electric shock or short circuit.
- Electric Shock Hazard: Do not handle the AC-adapter with wet hands.
- Unplug the AC adapter after use.
- Be sure to grasp the adapter itself, not the cable, when disconnecting the AC adapter from the power source.
- Do not piggyback the electrical outlet. It may cause overheating.
- Do not forcefully bend, twist, or pull the cable, or modify the cable.
- Do not put the cable under furniture, electric appliances, figurines, or any other heavy objects. Damaged cables may cause fire or electric shock.
- Do not use any AC adapter with damaged cable.
- In the event that the AC adapter becomes damaged or the unit malfunctions, turn the unit off and disconnect the AC adapter immediately.

**For more information and other Otamatone models, visit the Thomann Website:**

<https://www.thomann.de/gb/otamatone.html>