

INSTRUCTION MANUAL - NEO

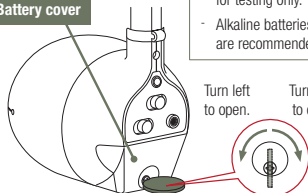
Step 1

Put new batteries in the battery box.

- Before using the product please take out the cushioning material provided for maintaining the shape of the mouth.
- Discard the material

- 1 Hold the battery cover and open it with a right size coin (or an equivalent item.)

Battery cover



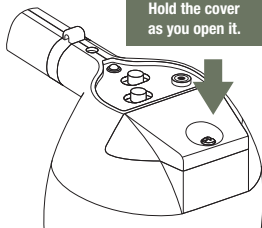
How to change batteries:

Requires batteries: AA x3

- Included batteries are for testing only.
- Alkaline batteries are recommended.

Caution: The battery cover may spring open as you loosen it. Keep your face away from it

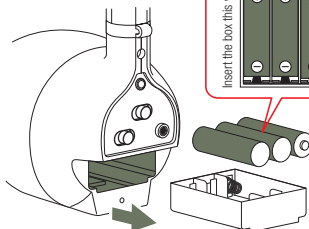
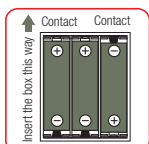
Hold the cover as you open it.



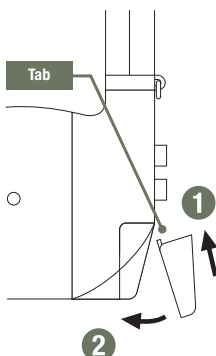
- 2 Take the battery box out and place batteries.

- Place batteries in the right directions
- Follow the directions shown on the bottom of battery box.
- Change the batteries when the sound gets softer or intermittent

Disconnect the AC adapter from the unit before changing the batteries

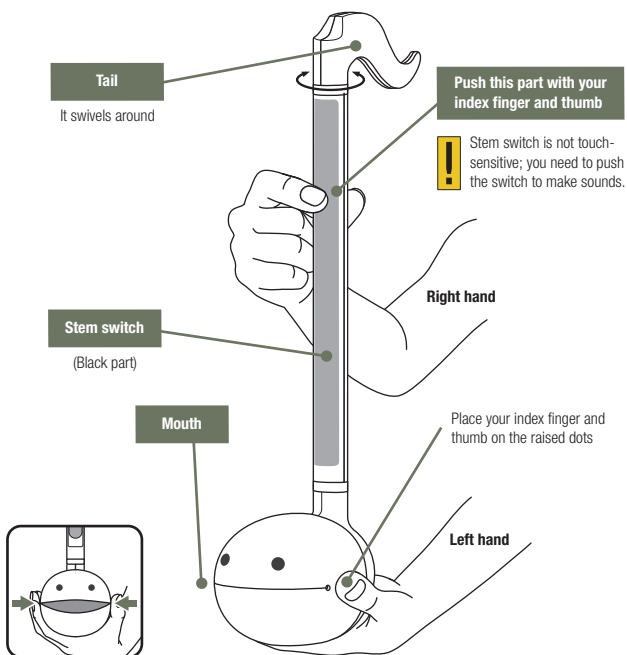


- 3 Attach the cover as shown, push to close, and tighten the screw



Step 3

Hold the Otamatone



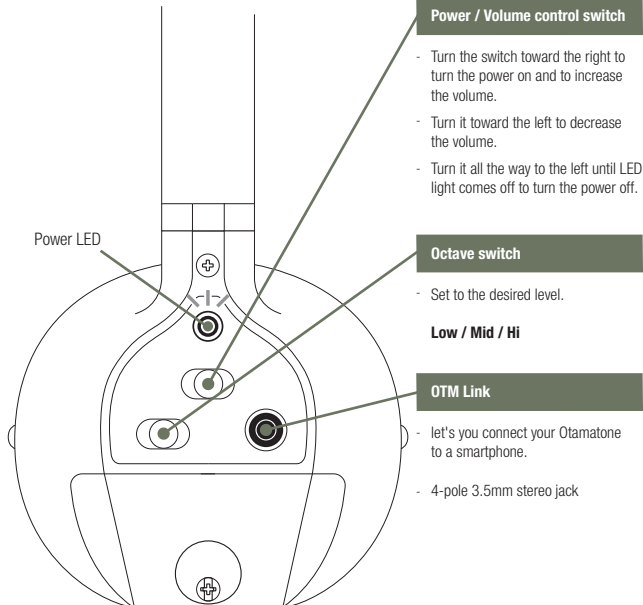
Push raised dots to open the mouth.

Left-handed persons may want to switch hands.

Step 2

Set up the Otamatone for playing

- 1 Turn the Power/volume control switch to the right until it clicks; LED light will come on.
- 2 Set the Octave switch to the desired level.



Power / Volume control switch

- Turn the switch toward the right to turn the power on and to increase the volume.
- Turn it toward the left to decrease the volume.
- Turn it all the way to the left until LED light comes off to turn the power off.

Octave switch

- Set to the desired level.

Low / Mid / Hi

- let's you connect your Otamatone to a smartphone.

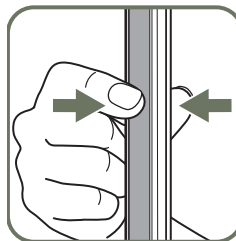
OTM Link

- 4-pole 3.5mm stereo jack

Hint to make the batteries last: Turn the power/volume switch off until it clicks after playing

Step 4

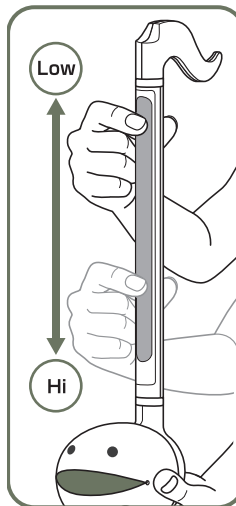
Techniques! - Try different techniques!



Push Technique

Push the Stem switch anywhere! This will make „mmm“ sound. Push different places and the sound will change too.

- ➡ Push the Stem switch with your index finger and thumb.



Portamento Technique

Push and hold the Stem switch. Slide the fingers up and down. This will make „peooow“ sound.

- ➡ Push a bit harder and slide to make sure the sound does not break.

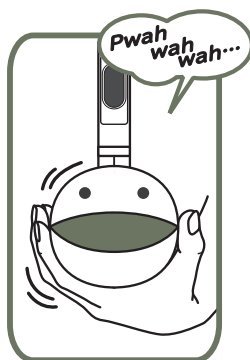
After mastering the technique, you can adjust the pressure.

* Change the Octave switch to try a different pitch.

INSTRUCTION MANUAL - NEO

Step 5

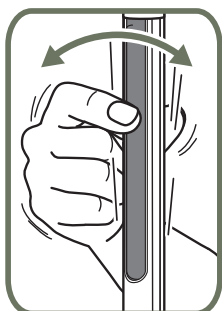
Techniques! - Try different techniques!



Wah Wah Technique

While pushing the Stem switch, open and close the mouth. The sound changes from „woo“ to „wah“. Repeat this to make „wah wah wah“.

← This will vary the sound. The opening and the closing of the mouth entertains everyone!



Vibrato:

A tremulous or pulsating effect produced in an instrumental or vocal tone.

Vibrate the Stem while doing the Push technique. The sound changes according to the vibration.

Mouth Technique does not work while using the headphones

Step 7

OTM Studio

Menu

Check the following options.

Terms of Service, Privacy Policy, User Manual, Language, Contact and Support, Info

Store

The complete set of features can be unlocked through in app purchases.

Main screen

An overview of the current status. The Otamatone parts each correspond to a certain mode. If you tap them and switch to a different mode the buttons below will change as well. The mouth on the main screen will move while you are playing.

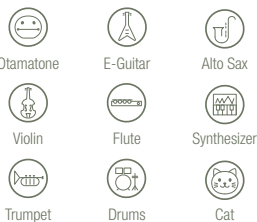
Tap the red circle to display the instrument buttons.

Instrument buttons

Each mode has a set of buttons for its specific functions. Your current selection is highlighted in dark grey (buttons look different in different modes).

Tap a button to change your Otamatone's sound.

You can choose between 9 instruments.



Volume Fader

Each mode has a different looking fader.

Use this to adjust volume.

Step 6

OTM Link (Otomatone Music Link)

A new feature that allows you to connect the Otamatone to a smartphone or tablet. All you need to do is plug in the included 4-pole 3.5mm stereo cable. As easy as that!



*Not all Android devices can be used with the app.



Caution

* Devices without a 4-pole 3.5mm stereo jack can only be connected via OTM Link by using an adapter that supports microphone input.

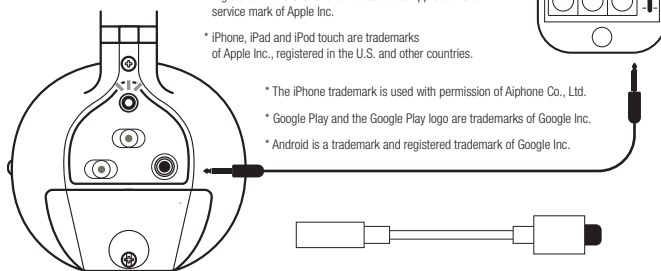
* Apple and the Apple logo are trademarks of Apple Inc., registered in the U.S. and other countries. App Store is a service mark of Apple Inc.

* iPhone, iPad and iPod touch are trademarks of Apple Inc., registered in the U.S. and other countries.

* The iPhone trademark is used with permission of Aliphone Co., Ltd.

* Google Play and the Google Play logo are trademarks of Google Inc.

* Android is a trademark and registered trademark of Google Inc.



When using a 3.5mm adapter for the cable

- * Make sure your adapter supports microphone input. If the adapter can only be used for musical output OTM Link will not work.
- * Please note that due to app or device specifications OTM Link might not work properly.
- * Make sure the adapter is not damaged. If it doesn't fully transmit the signal OTM Link will not work properly.
- * Using an adapter can result in lower volume. In this case, please adjust the volume through your device or the app.
- * Using an adapter can create noise. It is not possible to fully prevent this problem but adjusting the volume through your device or the app can help.

Important Safety Instructions

Safety instructions for using AC power source:

Mishandling of power source may cause fatal accidents or serious injuries.

- Check the voltage rating before you connect the adapter to an electrical outlet to ensure that the required voltage and frequency match the available power source.
- Use only the specified AC adapter approved for use with this product. Wipe off dust from the AC adapter plug to avoid electric shock or short circuit.
- Electric Shock Hazard: Do not handle the AC-adapter with wet hands.
- Unplug the AC adapter after use.
- Be sure to grasp the adapter itself, not the cable, when disconnecting the AC adapter from the power source.
- Do not piggyback the electrical outlet. It may cause overheating.
- Do not forcefully bend, twist, or pull the cable, or modify the cable.
- Do not put the cable under furniture, electric appliances, figurines, or any other heavy objects. Damaged cables may cause fire or electric shock.
- Do not use any AC adapter with damaged cable.
- In the event that the AC adapter becomes damaged or the unit malfunctions, turn the unit off and disconnect the AC adapter immediately.

For more information and other Otamatone models, visit the Thomann Website:

- <https://www.thomann.de/gb/otamatone.html>