

AUDIOCASE

USER MANUAL

AUDIOCASE S5 and AUDIOCASE S10



AUDIOCASE APS
REFSHALEVEJ 153, 1
1432 KØBENHAVN K
DENMARK

Table of Contents

- OVERVIEW 3
- INTENDED USE 3
- PACKAGE CONTENTS 5
- SYSTEM SETUP 5
 - CONTROL PANELS 5
 - CONNECTING SOURCES 6
 - Bluetooth* 6
 - AUX Input*..... 6
- CARE & MAINTENANCE 7
 - REPLACING THE BATTERY 7
 - CLEANING YOUR AUDIOCASE..... 7
- TROUBLESHOOTING 8
- FIRMWARE UPGRADE..... 10
- SAFETY INFORMATION 11
 - CAUTION WITH LITHIUM BATTERIES..... 11
- DISPOSAL OF THE PRODUCT..... 12
 - DISPOSAL OF PACKAGING MATERIAL..... 12
 - DISPOSAL OF BATTERY PACK 12
 - DISPOSAL OF YOUR OLD DEVICE 12
- TECHNICAL SPECIFICATIONS..... 13

Overview

Thank you for purchasing the Audiocase S5/S10. This guide provides setup and operating instructions for your Audiocase and explains how to connect to a variety of audio sources.

For additional information please visit <https://audiocase.dk>

Intended Use

This device is designed for sound reinforcement. Use the device only as described in this user manual. Any other use or use under other operating conditions is considered to be improper and may result in personal injury or property damage. No liability will be assumed for damages resulting from improper use.

This device may be used only by persons with sufficient physical, sensorial, and intellectual abilities and having corresponding knowledge and experience. Other persons may use this device only if they are supervised or instructed by a person who is responsible for their safety.



DANGER!
Danger for children

Ensure that plastic bags, packaging, etc. are disposed of properly and are not within reach of babies and young children. Choking hazard! Ensure that children do not detach any small parts (e.g. knobs or the like) from the unit. They could swallow the pieces and choke! Never let children unattended use electrical devices.



WARNING!
Incorrect handling of lithium batteries can result in injury

In the event of a short circuit, overheating or mechanical damage, lithium batteries can cause severe injuries. Follow the advice on the correct handling of lithium batteries in the present section.



CAUTION!
Possible hearing damage

The device can produce volume levels that may cause temporary or permanent hearing impairment. Over an extended period of time, even levels that seem to be uncritical can cause hearing damage. Decrease the volume level immediately if you experience ringing in your ears or hearing impairment. If this is not possible, keep a greater distance or use sufficient ear protectors.

! NOTICE!
● Possible damage by leaking batteries

Leaking batteries can cause permanent damage to the device. Take batteries out of the device if it is not going to be used for a longer period.

! NOTICE!
● Possible staining

The plasticiser contained in the rubber feet of this product may possibly react with the coating of your surface and after some time cause permanent dark stains. In case of doubt, do not put the rubber feet directly on the surface and use a suitable underlay if necessary, i.e. felt pads or similar.

! NOTICE!
● Possible damage to lithium-ion batteries through incorrect storage

By deep discharge, lithium-ion batteries can be permanently damaged or lose some of their capacity. Before long breaks, charge the batteries to around 50 % of their capacity and then switch off the device. Store the device at room temperature or cooler in an environment as dry as possible. If the batteries are stored for a longer period, recharge them to 50 % every three months. Fully charge the batteries only shortly before use at room temperature.

! NOTICE!
● Possible property damage by magnetic fields

Loudspeakers produce a static magnetic field. Therefore, maintain an appropriate distance to devices that can be adversely affected or damaged by an external magnetic field.

! NOTICE!
● Fire hazard due to exceedance of the maximum current

The device can power other devices of identical construction. The current consumption of all other devices connected in series must not exceed the values indicated in the technical specifications. Otherwise you risk injuries and irreparable damages to the device. Only connect so many identical devices that the maximum current consumption is not exceeded. Ensure the sufficient dimensioning (wire cross section) of the power cables used for all devices connected in series.

! NOTICE!
● External power supply

The device can be powered by an external power supply. Before connecting an external power supply, ensure that the input voltage (AC outlet) matches the voltage rating of the device and that the AC outlet is protected by a residual current circuit breaker. Failure to do so could result in damage to the device and possibly the user. Unplug the external power supply before electrical storms occur and when the device is unused for long periods of time to reduce the risk of electric shock or fire.

Package Contents

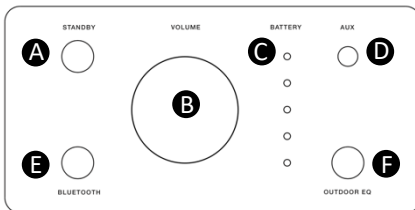
The Audiocase package contains the following:

- 1 x Audiocase
- 1 x Audiocase B1 Battery Pack
- 1 x Audiocase C1 Charger

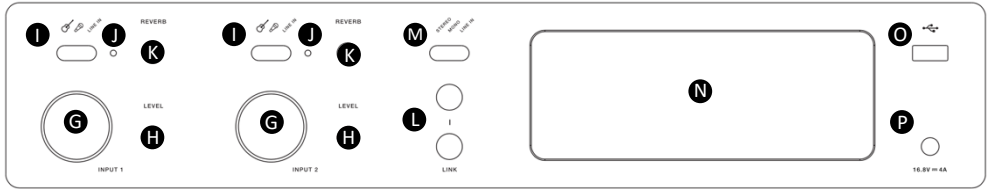
System Setup

Below you will find an overview of the control panels on the Audiocase with instructions on how to connect and adjust various audio sources, charge the battery as well as charge mobile devices using the USB port.

Control Panels



A Standby Press and hold the button for two seconds to turn the Audiocase on and off.	B Master Volume Controls the volume of all inputs.
C Battery Level Indicator These LEDs show the capacity level of the battery. 1 LED ≈ 20% capacity.	D AUX input 3.5mm TSR line-level input that overrides any Bluetooth input.
E Bluetooth Pairing Press and hold the button for two seconds to make the Audiocase Bluetooth discoverable.	F Outdoor EQ DSP tuning mode that optimizes the sound for outdoor use.



<p>G XLR-Jack Combo Input Analog XLR and 6.35mm TRS Jack input for connecting microphone and instrument.</p>	<p>H Input Level Control Adjust the volume of microphone, instrument or line input.</p>
<p>I Input Toggle Switch Choose input mode that optimizes the sound for microphone, instrument, or line in (off).</p>	<p>J Input active LED Shows if Input 1/2 is active. Inputs are switched on by turning the Input Level Control H</p>
<p>K Reverb Control Adjust the amount of reverb applied to the microphone or instrument input.</p>	<p>L Link Connection 2 x 6.35mm TRS Jack to connect two or more Audiocases in stereo or daisy-chained mono.</p>
<p>M Link Toggle Switch For primary Audiocase choose either Stereo or Mono output. For secondary choose Line In.</p>	<p>N Battery Slot Insert Audiocase Battery pack here.</p>
<p>O USB Port Use this USB port to charge mobile devices such as smartphones and tablets.</p>	<p>P Charger Input Use Audiocase charger to charge battery. Use only original Audiocase charger (DC 16.8V-4A)</p>

Connecting Sources

Before connecting a sound source, adjust the appropriate channel volume control fully counterclockwise.

Bluetooth **E**

1. Turn on *Bluetooth* on your mobile device.
2. Press and hold the **Bluetooth Pair** button on the Audiocase for two seconds. When ready to pair, the button will flash white.
3. Select *Audiocase* from the device list on your mobile device.

AUX Input **D**

Connect a line-level sound source to the AUX Input via a 3.5 mm (1/8") cable. The AUX input overrides any Bluetooth connection.

Input 1 & 2

Input 1 and 2 are for use with dynamic microphones, guitars, keyboards or other instruments. These two inputs can be played together, and also while a Bluetooth or AUX is playing, e.g. as a backing track or for karaoke:

1. Connect your sound source to the **channel input** of either Input 1 or 2.
2. Apply a preset by turning the **Input Toggle Switch** for the appropriate channel to either microphone, instrument, or line input. This automatically optimizes the sound of your microphone or instrument. Line in has no sound adjustment.
3. Adjust the **Volume Control** clockwise – while speaking into the microphone or playing your instrument – until the volume has reached the desired level.
4. Adjust **Reverb Control** – while speaking into the microphone or playing your instrument – until the desired effect is achieved.

Care & Maintenance

Replacing the battery

1. Switch off the Audiocase by pressing the **Standby** button for two seconds.
2. Eject the battery pack from the battery slot using by pulling the battery pack with your hand.
3. Charge the battery pack with the Audiocase charger, either directly connected to the battery, or to the DC power input when battery is placed into the battery slot.
4. Push in the new or recharged battery pack into the battery slot.

To purchase a new Audiocase Battery Pack, please visit <https://audiocase.dk>

Cleaning Your Audiocase

Clean the product enclosure using only a soft, dry cloth. If necessary, carefully vacuum the grille of the loudspeaker.

CAUTION: Do not use any solvents, chemicals, or cleaning solutions containing alcohol, ammonia, or abrasives. Do not use any sprays near the product or allow liquids to spill into any openings.

Troubleshooting

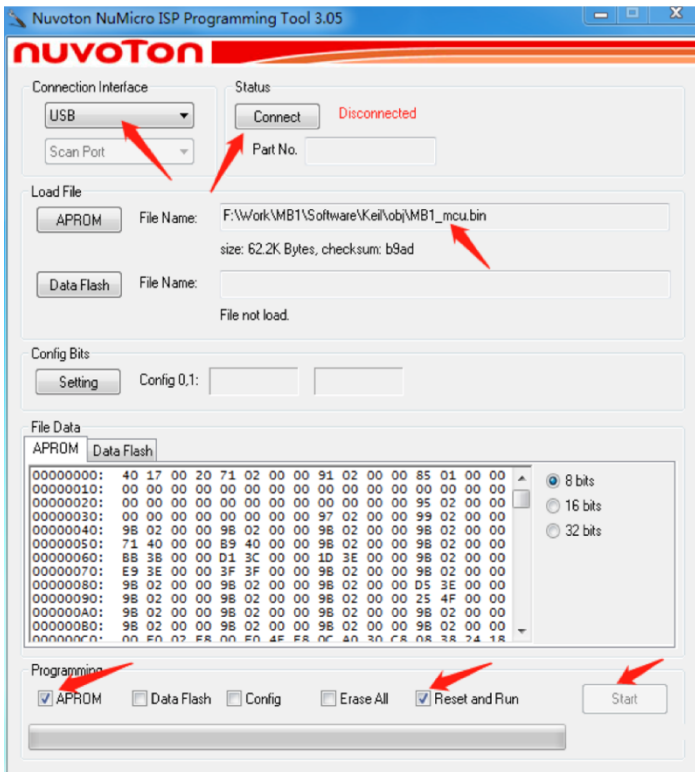
Problem	Solution
No power	<p>Make sure you have power at the AC outlet. Try operating a lamp or other equipment from the same AC outlet or test the outlet using an AC outlet tester.</p> <p>Battery may be in protection mode or discharged. Connect it to AC (mains) power.</p>
No sound	<p>Make sure your instrument is plugged into the signal input.</p> <p>Make sure the volume control is turned up on your source.</p> <p>Make sure the volume control is turned up on the Audiocase.</p> <p>Make sure your Input Active LED is lit.</p> <p>Plug your instrument into a different amplifier to make sure the source is working.</p>
Instrument or audio source sounds distorted	<p>Turn volume down on the source; if your audio source volume cannot be adjusted, "input pads" are available from your preferred instrument retailer.</p> <p>Try a different source or instrument.</p>
Microphone is encountering feedback	<p>Turn volume down.</p> <p>Orient the microphone so that it is not pointing directly at the loudspeaker. Try a different microphone.</p> <p>Try a different position for the loudspeaker and/or vocalist on stage. Increase the distance from the loudspeaker to the microphone.</p> <p>If using a vocal effects processor, make sure it is not contributing to the feedback problem.</p>

<p>Paired <i>Bluetooth</i>[®] device will not connect to the Audiocase</p>	<p>Make sure Bluetooth functionality is turned on or enabled on your source device.</p> <p>Your Bluetooth device may be out of range; try moving it closer to the Audiocase.</p> <p>If possible, turn off all other nearby Bluetooth devices or disable their Bluetooth functionality.</p> <p>Clear the speaker memory or pair to new device by pressing and holding the Bluetooth button for ten seconds. Pair the Bluetooth device and the speaker again.</p> <p>Turn the power off and back on; then try re-pairing your device.</p>
<p>Excessive hum when daisy-chaining multiple Audiocases</p>	<p>Make sure you're using a 1/4" TRS cable; do not use a 1/4" TS (guitar) cable.</p>

Firmware Upgrade

The Audiocase can be firmware upgraded using a Windows PC connected to the USB port. Please follow below steps to upgrade. For latest firmware please visit <https://audiocase.dk/pages/download>

1. Make sure the Audiocase is turned off.
2. Use a USB Type A->A cable to connect Windows PC to USB port of the Audiocase.
3. Press BLUETOOTH and STANDBY button simultaneously for >1 second. Both LEDs will light on and the MCU is ready for firmware upgrade.
4. Open the Nuvoton application on the PC. Application can be downloaded on www.audiocase.dk.
5. Click "Connect" and it will show "Part No. NUCXXXXXXX" when connected.
6. Click "APROM" and load the firmware .bin firmware file.
7. Tick off "APROM" and "Reset and Run" and click "Start".
8. When upgrade is complete, disconnect the USB and turn off the Audiocase.



Safety Information

Product malfunctions due to incorrect use of the product is not covered by the warranty.

To avoid fire, injuries or electrocution please follow below instructions.

- Do not open the product or replace parts of the unit. Contact a qualified service center if the product malfunctions.
- Do not subject the product to wet, moist or excessively dusty environments, as this may cause damage.
- Never use abrasive cleaners or chemical solvents as this can damage the product.
- Do not expose the product to excessive heat, direct sunshine, flames or similar.
- Do not place lit candles or open flames on the product.
- Do not use excessive force or violence when operating the buttons and dials of the speaker.
- Do not place the product in a confined space during use, make sure there is ample air around it.
- If the product has been stored in a cold location, please allow it to reach room temperature before connecting it to a power source.

Caution with lithium batteries

The AUDIOCASE battery pack is made from lithium battery cells. Special caution should be made when handling the battery pack:

- When handled correctly and appropriately lithium batteries pose no risk.
- The battery pack is hermetically sealed. Never attempt to open the battery pack.
- Store lithium batteries in a cool, dry place, ideally in the original packaging.
- Store the battery pack away from heat sources, such as radiators or direct sunlight.
- Only use original AUDIOCASE battery charger to charge the battery pack.
- Never try to recharge a battery pack that is broken and won't recharge.
- If the battery housing is damaged small amounts of the electrolyte may leak out. If this should happen, seal the lithium battery in airtight packaging and wipe up the traces of electrolyte using absorbent paper towels. You must wear protective rubber gloves when doing so. Clean your hands and the affected surface thoroughly with cold water.
- In case of a burning battery pack please use only powder fire extinguishers or other extinguishers suitable for burning lithium batteries.
- Please see below instructions for correct disposal of battery packs.

Disposal of the product

AUDIOCASE products are made from recyclable and high-quality materials. Do not dispose of together with household garbage. Please understand the local classification about collecting electrical, electrical products that contains batteries. Correct disposal of the product will help to prevent negative impact to the environment. Please find below instructions for specific parts of the product.



Disposal of packaging material

AUDIOCASE use environmentally friendly packaging materials, which can be recycled. Please make sure that plastic bags, packaging, etc. are collected for recycling and not just in standard household waste.



Disposal of battery pack

The battery pack contain hazardous chemicals and should never be thrown away with household waste. Batteries should always be disposed of and recycled in accordance with your local regulations. Please make sure lithium batteries are discharged when disposed. Remove lithium batteries from the device before disposal. Protect used lithium batteries against potential short circuits, e.g. by covering the poles with adhesive tape. Please check for an appropriate reception facility for additional instructions on disposal of batteries.



Disposal of your old device

AUDIOCASE products are subject to the European Waste Electrical and Electronic Equipment Directive (WEEE) in their currently valid version. Do not dispose with your normal household waste.

Disposal of AUDIOCASE products should be done through an approved waste facility, making sure you comply with the rules and regulations that apply in your country. If any doubt, please consult with your local waste disposal facility.

Technical Specifications

Amplifier and Drivers

- 3 x 72W class D amplifier
- Frequency response - S5: 40-20,000Hz - S10: 35-20,000Hz
- Advanced DSP and psychoacoustic sound design
- Outdoor EQ mode
- **Audiocase S5**
2 x 5" midwoofers + 1" dome tweeter
- **Audiocase S10**
2 x 10" midwoofers + 1" compression horn tweeter

Connectivity

- Bluetooth 5.0 AptX
- 3.5 mm AUX input
- 2 x XLR/jack combo inputs with level/reverb control and mic/instrument selector
- 2 x 6.35 mm input/outputs for stereo link and daisy-chaining

Battery and Charger

- Battery: 14.8V - 6,800mAh - 97.68Wh Lithium Ion
- Charger: AC 110-240V - DC 16.8V - 3.86A
- Battery can be charged separately from the Audiocase
- Battery life: 30 hours at medium volume, 6 hours at max volume
- Full recharge: 3 hours
- USB-A 3.0 port to charge mobile devices

Materials and Design

- PVC coated plywood cabinet
- Extruded aluminum frame
- Solid aluminum corners
- Solid aluminum control panels
- Steel front grill
- Texture powder coated metal parts
- Plastic handle cups
- Rubber feet
- Stackable design

Dimensions and Weight

Audiocase S5

- Dimensions: 41 x 25 x 19 cm / 16.1 x 9.8 x 7.4 in
- Weight: 7.9 kg / 17.4 lbs

Audiocase S10

- Dimensions: 65 x 40 x 30 cm / 25.6 x 15.7 x 11.8 in
- Weight: 19.8 kg / 43.7 lbs