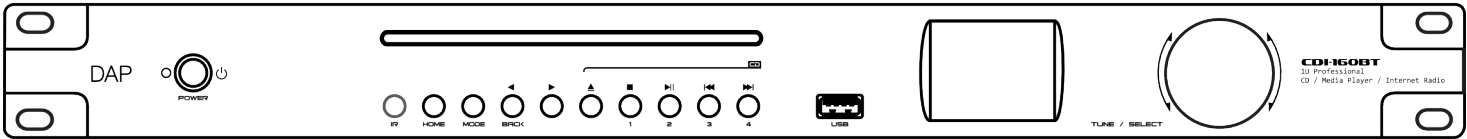


# DAP

# QUICK START GUIDE

ENGLISH  
V1.0



# CDI-160BT

Product code: D1244

## Preface

---

Thank you for purchasing this DAP product.

The purpose of this user manual is to provide instructions for the correct and safe use of this product.

Keep the user manual for future reference as it is an integral part of the product. The user manual shall be stored at an easily accessible location.

This user manual contains information concerning:

- Safety instructions
- Intended and non-intended use of the device
- Installation and operation of the device
- Maintenance procedures
- Troubleshooting
- Transport, storage and disposal of the device

Non-observance of the instructions in this user manual may result in serious injuries and damage of property.

©2024 DAP. All rights reserved.

No part of this document may be copied, published or otherwise reproduced without the prior written consent of Highlite International.

Design and product specifications are subject to change without prior notice.

For the latest version of this document or other language versions, please visit our website [www.highlite.com](http://www.highlite.com) or contact us at [service@highlite.com](mailto:service@highlite.com).

Highlite International and its authorized service providers are not liable for any injury, damage, direct or indirect loss, consequential or economic loss or any other loss arising from the use of, or inability to use or reliance on the information contained in this document.

## Table of contents

---

<b>1. Introduction</b> .....	<b>3</b>
1.1. Before Using the Product.....	3
1.2. Intended Use.....	3
1.3. Text Conventions.....	3
1.4. Symbols and Signal Words.....	4
1.5. Symbols on the Information Label.....	4
<b>2. Safety</b> .....	<b>5</b>
2.1. Warnings and Safety Instructions.....	5
2.2. Requirements for the User.....	6
<b>3. Description of the Device</b> .....	<b>7</b>
3.1. Front View.....	7
3.2. Back View.....	7
3.3. Product Specifications.....	8
<b>4. Installation</b> .....	<b>10</b>
4.1. Safety Instructions for Installation.....	10
4.2. Installation Site Requirements.....	10
4.3. Rack Mounting.....	10
4.4. Installation of the Batteries.....	11
4.5. Connecting to Power Supply.....	11
<b>5. Setup and Operation</b> .....	<b>12</b>
5.1. Setup Example.....	12
5.2. Connecting the Wireless Antennas.....	12
5.3. Connecting the DAB/FM Wire Antenna.....	12
5.4. Connecting the Device to a Router.....	12
<b>6. Maintenance</b> .....	<b>13</b>
6.1. Safety Instructions for Maintenance.....	13
6.2. Preventive Maintenance.....	13
6.2.1. Basic Cleaning Instructions.....	13
6.3. Corrective Maintenance.....	13
<b>7. Deinstallation, Transportation and Storage</b> .....	<b>14</b>
<b>8. Disposal</b> .....	<b>14</b>
<b>9. Approval</b> .....	<b>14</b>

## 1. Introduction

### 1.1. Before Using the Product



#### Important

**Read and follow the instructions in the user manual before installing, operating or servicing this product.**

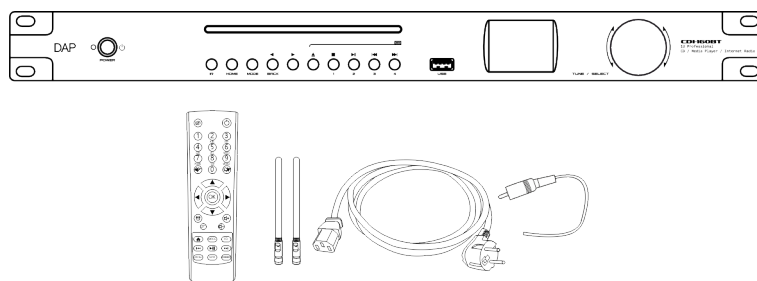
The manufacturer will not accept liability for any resulting damages caused by the non-observance of the user manual.

You can find the latest version of the user manual on our website [www.highlite.com](http://www.highlite.com).

After unpacking, check the contents of the box. If any parts are missing or damaged, contact your Highlite International dealer.

Your shipment includes:

- DAP CDI-160BT
- Schuko to IEC power cable (1,5 m)
- 2 wireless antennas
- DAB/FM antenna
- IR remote control
- User manual



**Figure 1**

### 1.2. Intended Use

This device is intended for professional use as a CD and media player. It can be installed only indoors. This device is not suitable for households.

Any other use, not mentioned under intended use, is regarded as non-intended and incorrect use.

### 1.3. Text Conventions

Throughout the user manual the following text conventions are used:

- Buttons: All buttons are in bold lettering, for example "Press the **UP/DOWN** buttons"
- References: References to parts of the device are in bold lettering, for example: "turn the **adjustment handle (05)**". References to chapters are hyperlinked
- 0–255: Defines a range of values
- Notes: **Note:** (in bold lettering) is followed by useful information or tips

## 1.4. Symbols and Signal Words

Safety notes and warnings are indicated throughout the user manual by safety signs.

Always follow the instructions provided in this user manual.



### **DANGER**

Indicates an imminently hazardous situation which, if not avoided, will result in death or serious injury.



### **WARNING**

Indicates a potentially hazardous situation which, if not avoided, could result in death or serious injury.



### **CAUTION**

Indicates a potentially hazardous situation, which, if not avoided, may result in minor or moderate injury.



### **Attention**

Indicates important information for the correct operation and use of the product.



### **Important**

Read and observe the instructions in this document.



### **Electrical hazard**



Provides important information about the disposal of this product.

## 1.5. Symbols on the Information Label

This product is provided with an information label. The information label is located on the bottom plate of the device.

The information label contains the following symbols:



This device is designed for indoor use.



This device falls under IEC protection class I.



This device shall not be treated as household waste.



Caution: Risk of electric shock. Disconnect input power before opening.  
Warning: This appliance must be earthed.

## 2. Safety



**Important**  
**Read and follow the instructions in this user manual before installing, operating or servicing this product.**

The manufacturer will not accept liability for any resulting damages caused by the non-observance of this manual.

### 2.1. Warnings and Safety Instructions



**DANGER**  
**Danger for children**

For adult use only. The device must be installed beyond the reach of children.

- Do not leave any parts of the packaging (plastic bags, polystyrene foam, nails, etc.) within the reach of children. Packaging material is a potential source of danger for children.



**DANGER**  
**Electric shock caused by short-circuit**

This device falls under IEC protection Class I.

- Make sure that the device is electrically connected to ground (earth). Connect the device only to a socket-outlet with a ground (earth) connection.
- Do not cover the ground (earth) connection.
- Do not let the power cable come into contact with other cables. Handle the power cable and all connections with the mains with caution.
- Do not modify, bend, mechanically strain, put pressure on, pull or heat up the power cable.
- Make sure that the power cable is not crimped or damaged. Examine the power cable periodically for any defects.
- Do not immerse the device in water or other liquids. Do not install the device in a location where flooding may occur.
- Do not use the device during thunderstorms. Disconnect the device from the electrical power supply immediately.



**DANGER**  
**Electric shock caused by dangerous voltage inside**

There are areas inside the device where dangerous touch voltage may be present.

- Do not open the device or remove any covers.
- Do not operate the device if the covers or the housing are open. Before operation, check if the housing is firmly closed and all screws are tightly fastened.
- Disconnect the device from the electrical power supply before service and maintenance, and when the device is not in use.



**Attention**  
**Power supply**

- Before connecting the device to the power supply, make sure that the current, voltage and frequency match the input voltage, current and frequency specified on the information label on the device.
- Make sure that the cross-sectional area of the extension cords and power cables is sufficient for the required power consumption of the device.



**Attention**  
**General safety**

- Do not block the ventilation openings. Without proper heat dissipation and air circulation, the internal components may overheat. This can result in product damage.
- Do not shake the device. Avoid brute force when installing or operating the device.
- If the device is dropped or struck, disconnect the device from the electrical power supply immediately.
- If the device is exposed to extreme temperature variations (e.g. after transportation), do not switch it on immediately. Let the device reach room temperature before switching it on, otherwise it may be damaged by the formed condensation.
- If the device fails to work properly, discontinue use immediately.



**Attention**  
**For professional use only**  
**This device must be used only for the purposes it is designed for.**

This device is designed to be used as a CD and media player. Any incorrect use may lead to hazardous situations and result in injuries and material damage.

- This device is not suitable for households.
- This device does not contain user-serviceable parts. Unauthorized modifications to the device will render the warranty void. Such modifications may result in injuries and material damage.



**Attention**  
**Do not expose the device to conditions that exceed the rated IP class conditions.**

This device is IP20 rated. IP (Ingress Protection) 20 class provides protection against solid objects greater than 12 mm, such as fingers, and no protection against harmful ingress of water.

## 2.2. Requirements for the User

This product may be used by ordinary persons. Installation and maintenance may be carried out by ordinary persons. Service shall be carried out only by instructed or skilled persons. Contact your Highlite International dealer for more information.

Instructed persons have been instructed and trained by a skilled person, or are supervised by a skilled person, for specific tasks and work activities associated with the installation, service and maintenance of this product, so that they can identify risks and take precautions to avoid them.

Skilled persons have training or experience, which enables them to recognize risks and avoid hazards associated with the installation, service and maintenance of this product.

Ordinary persons are all persons other than instructed persons and skilled persons. Ordinary persons include not only users of the product but also any other persons that may have access to the device or who may be in the vicinity of the device.

### 3. Description of the Device

The DAP CDI-160BT is a CD and media player and is designed for installation into a 19-inch rack. The device features DAB+, FM and an internet radio, as well as a USB port and Bluetooth 5.3. There are both balanced and unbalanced outputs on the back of the device. The player can be operated using the controls on the front or with the included IR remote control.

#### 3.1. Front View

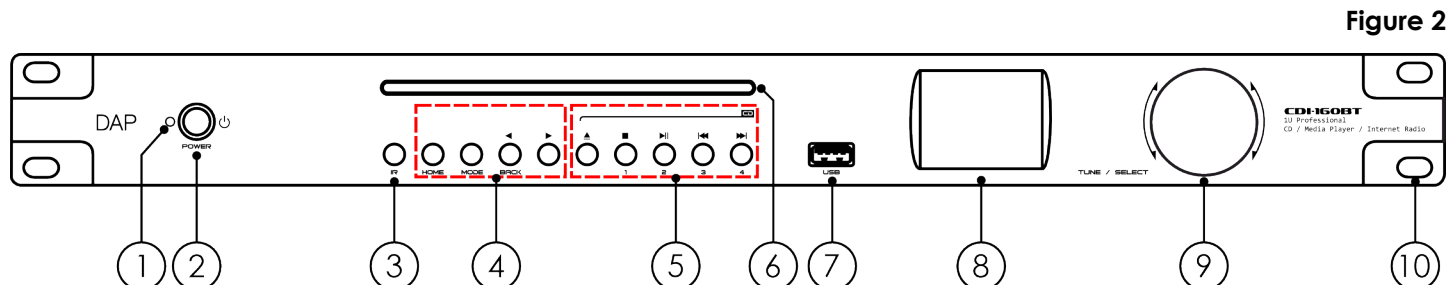


Figure 2

- |                                       |  |
|---------------------------------------|--|
| 01) Stand-by LED indicator (blue)     | 06) CD slot  |
| 02) Stand-by button                   | 07) USB-A connector IN   |
| 03) Infra-red sensor                  | 08) TFT display (2,4 ")  |
| 04) Control buttons                   | 09) Tune/Select control  |
| 05) Control buttons for the CD player | 10) 4 x mounting openings (for installation in a 19-inch rack) |

#### 3.2. Back View

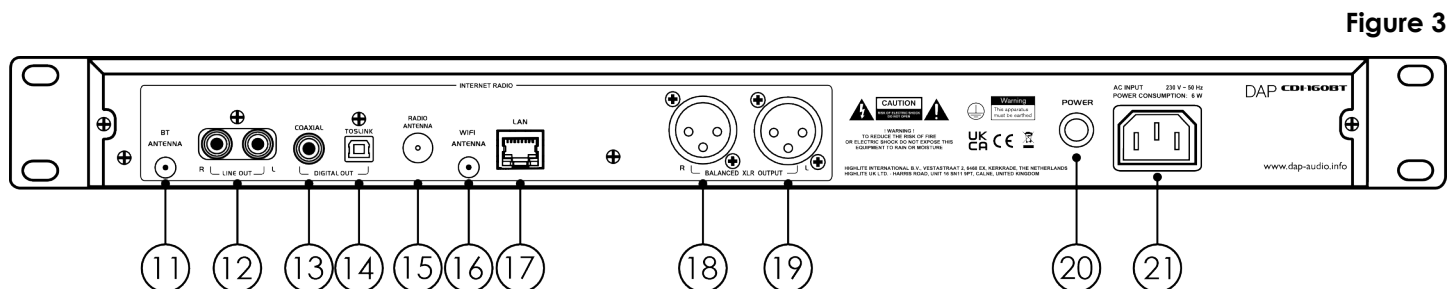


Figure 3

- |   |  |
|---|--|
| 11) BT antenna connector                              | 17) RJ45 LAN connector IN                    |
| 12) RCA analog line-level connectors OUT (Left/Right) | 18) 3-pin XLR balanced connector OUT (Right) |
| 13) Digital connector (coaxial) OUT                   | 19) 3-pin XLR balanced connector OUT (Left)  |
| 14) Digital connector (TOSLINK) OUT                   | 20) Power switch ON/OFF                      |
| 15) DAB/FM wire antenna connector                     | 21) IEC power connector IN                   |
| 16) Wi-Fi antenna connector                           |  |



### 3.3. Product Specifications

Model:	CDI-160BT
--------	-----------

#### Outputs:

Main outputs	3
Main output connector	3-pin XLR / RCA

#### Playback:

Supported audio files	AAC/AAC+ / FLAC / MP3 / WAV
Supported format	FAT32
Maximum storage size	512 GB
Media input/output	USB-A
USB type	2.0
Playback functions	Up (Skip) / Down (Skip) / Play / Pause / Stop / Folder

#### Audio Specifications:

THD level	< 0,1 %
Signal-to-noise ratio	> 70 dB
Frequency response minimum	20 Hz
Frequency response maximum	20000 Hz

#### Wireless Specifications:

Bluetooth version	5.3
FM frequency start	87 MHz
FM frequency end	108 MHz
FM antenna impedance	75 $\Omega$
DAB+ frequency start	174,928 MHz
DAB+ frequency end	239,2 MHz

#### Control and Programming:

Display	TFT
Display size	2,4 "

#### Electrical Specifications and Connections:

Power supply	220–240 V AC 50/60 Hz
Power consumption	6 W
Power connector IN	IEC
Data connector IN	RJ45

#### Mechanical Specifications:

Height	44,5 mm
Depth	230 mm
Width	482 mm
Flightcase size	19 "
Rack units	1 U
Housing	Aluminum / Metal
Color	Black

Weight	2,8 kg
IP rating	IP20 (indoor use only)

**Thermal Specifications:**

Maximum ambient temperature	40 °C
Minimum ambient temperature	0 °C

**Included Items:**

Included cables	IEC cable
Included remotes	IR remote

## 4. Installation

---

### 4.1. Safety Instructions for Installation

**Attention**

**Make sure that there is enough space for ventilation around the device.**

- Do not block the ventilation openings. Without proper heat dissipation and air circulation, the internal components may overheat. This can result in product damage.
- Do not install near equipment that produces heat, for example amplifiers.

### 4.2. Installation Site Requirements

- The device can be used only indoors.
- The ambient temperature must be in the range 0 and 40 °C.
- The relative humidity must not exceed 50 % with an ambient temperature of 40 °C.

### 4.3. Rack Mounting

The device can be mounted in a standard 19-inch rack. The device requires 1 rack unit (RU) of space, which is 44,5 mm high.

Make sure that the rack is sufficiently secured to prevent it from becoming unstable or falling over.

To mount the device in a two-post rack, follow the steps below:

- 01) Insert 4 cage nuts in the openings on the rack posts where you want to mount the device.
- 02) Position the device in front of the rack posts so that the 4 **mounting openings (10)** on the flanges face the openings on the rack posts with cage nuts.
- 03) Using a screwdriver, mount the device to the rack posts with 4 screws.

#### 4.4. Installation of the Batteries

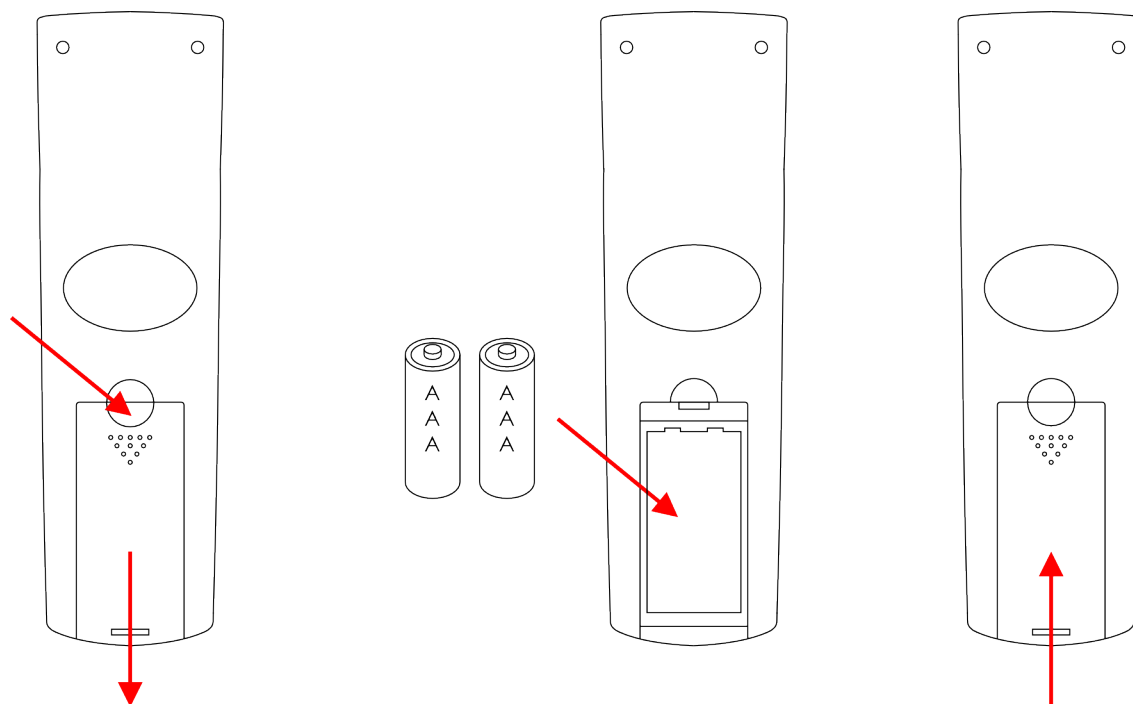
The device can be operated with an IR remote control. The remote control is included in the delivery.

The remote control is delivered without batteries. It accepts 2 x AAA 1,5 V (alkaline) batteries.

To install the batteries:

- 01) Press on the battery compartment cover and slide it downwards to open the battery compartment.
- 02) Insert 2 x AAA 1,5 V batteries into the battery housing. Make sure that you install the batteries with correct polarity orientation.
- 03) Close the battery compartment cover.

Figure 4



#### 4.5. Connecting to Power Supply



**DANGER**  
Electric shock caused by short-circuit

The device accepts AC mains power at 220–240 V and 50 Hz. Do not supply power at any other voltage or frequency to the device.

This device falls under IEC protection class I. Make sure that the device is always electrically connected to the ground (earth).

Before connecting the device to the socket-outlet:

- Make sure that the power supply matches the input voltage specified on the information label on the device.
- Make sure that the socket-outlet has ground (earth) connection.

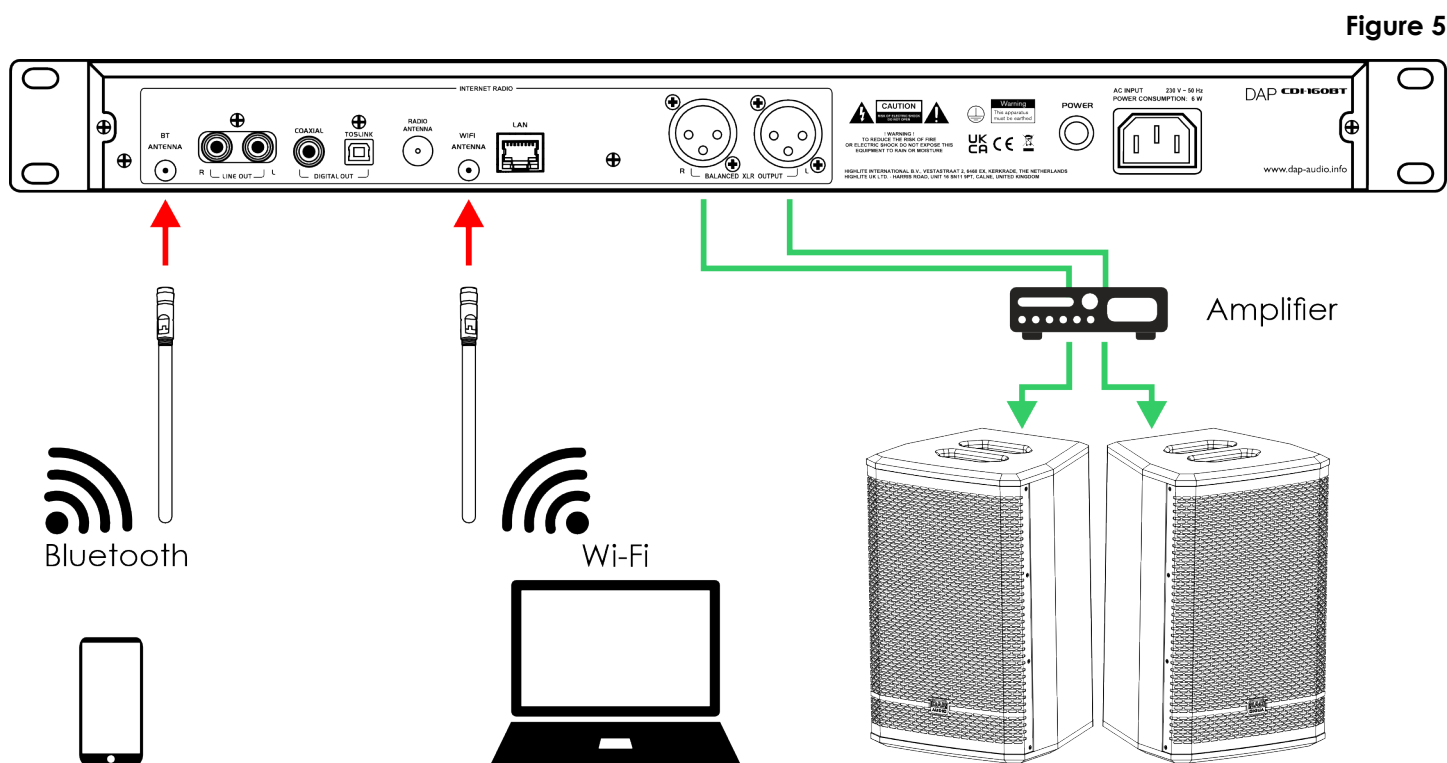
Connect the device to the socket-outlet with the power plug.

## 5. Setup and Operation

### 5.1. Setup Example

For the complete instructions of operation of this device, refer to the user manual. You can find the latest version of the user manual on our website [www.highlite.com](http://www.highlite.com).

This is a typical setup with 2 streaming devices and 2 active speakers connected through an amplifier to the device.



### 5.2. Connecting the Wireless Antennas

The device is delivered with 2 wireless antennas. The antennas are not connected. To install the antennas:

- 01) Put the 2 wireless antennas into the **BT antenna connector (11)** and the **Wi-Fi antenna connector (16)**.
- 02) Turn the 2 wireless antennas clockwise to tighten them.
- 03) Make sure that the wireless antennas point up.

### 5.3. Connecting the DAB/FM Wire Antenna

- 01) Put the DAB/FM wire antenna into the **DAB/FM wire antenna connector (12)**.
- 02) Unwind the DAB/FM wire antenna to improve the reception.

### 5.4. Connecting the Device to a Router

To make a LAN connection, it is necessary to connect the device to a router.

- 01) Plug one end of the network cable into an RJ45 connector on the router.
- 02) Plug the other end of the network cable into the **RJ45 LAN connector IN (17)** on the device.

#### Note:

If you use a network cable and the DHCP function on the router is activated, it is not necessary to configure the network.

## 6. Maintenance

---

### 6.1. Safety Instructions for Maintenance



**DANGER**  
Electric shock caused by dangerous voltage inside

Disconnect power supply before servicing or cleaning.

### 6.2. Preventive Maintenance



**Attention**  
Before use, examine the device visually for any defects.

Make sure that:

- The housing is not damaged.
- The power cable is not damaged and does not show any material fatigue.

#### 6.2.1. Basic Cleaning Instructions

To clean the device, follow the steps below:

- 01) Disconnect the device from the electrical power supply.
- 02) Allow the device to cool down for at least 5 minutes.
- 03) Clean the device with a soft, lint-free cloth.



**Attention**

- Do not immerse the device in liquid.
- Do not use alcohol or solvents.

### 6.3. Corrective Maintenance

The device does not contain user-serviceable parts. Do not open the device and do not modify the device.

Refer repairs and servicing to instructed or skilled persons. Contact your Highlite International dealer for more information.

## 7. Deinstallation, Transportation and Storage

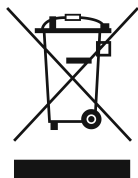
---

- Use the original packaging to transport the device, if possible.
- Clean the device before storing (see [6.2.1. Basic Cleaning Instructions](#) on page 13).
- Store the device in the original packaging, if possible.

## 8. Disposal

---

### Correct disposal of this product



### Waste Electrical and Electronic Equipment

This symbol on the product, its packaging or documents indicates that the product shall not be treated as household waste. Dispose of this product by handing it to the respective collection point for recycling of electrical and electronic equipment. This is to avoid environmental damage or personal injury due to uncontrolled waste disposal. For more detailed information about recycling of this product contact the local authorities or the authorized dealer.

## 9. Approval

---



Hereby, Highlite International declares that the device CDI-160BT, product code D1244, is in compliance with Directive 2014/53/EU (RED – Radio Equipment Directive).

The full text of the EU declaration of conformity is available on the respective product page on the website of Highlite International ([www.highlite.com](http://www.highlite.com)).

DAP