

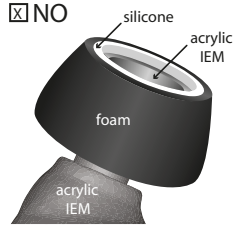
HOW TO INSERT TIPS



STEP 1

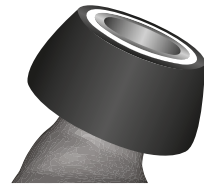
Push tip onto in-ear monitor.

NO



NOT FLUSH

YES



FLUSH

STEP 2

Use thumb to push silicone/foam tip till it sits flush with the acrylic IEM.

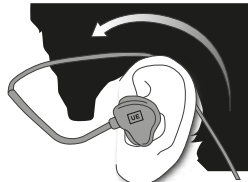
!!ENSURE TIPS ARE SECURELY PLACED TO NOT ALLOW FALLING OFF IN EAR!!

HOW TO WEAR



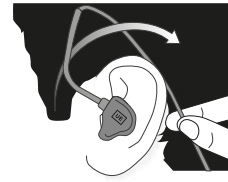
STEP 1

Accessibility Feature*.



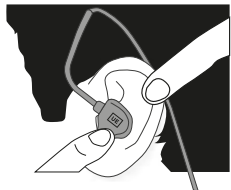
STEP 2

Insert monitors.
Twist forward .



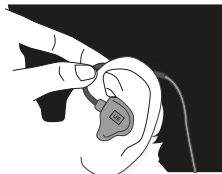
STEP 3

Snap backwards.
Lock into place.



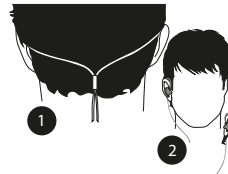
STEP 4

Push on faceplate.
Adjust seat.



STEP 5

Adjust Cable.
Wrap behind ear.



STEP 6

Cinch cable. Secure.

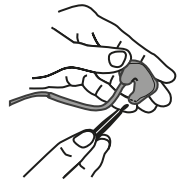
*Tactile raised red dot lets you easily identify the right side IEM by sight or touch.

ULTIMATE EARS

PROFESSIONAL

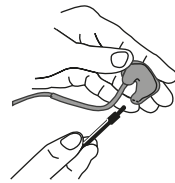
USER GUIDE

HOW TO CARE



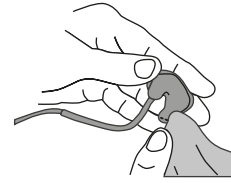
Cleaning:

Use cleaning tool to remove wax buildup after each use



Scrubbing:

Use the brush to remove any remaining debris.



Polishing:

Use a soft cloth to wipe the shell.



Cable:

Loosely wrap the cable around your 4 fingers.



Storage:

Protect in carrying case.

CUSTOMER CARE

If there is anything else that we can ever do for you, please do not hesitate to contact us at any time.

facebook.com/UltimateEarsPro
twitter.com/UltimateEarsPro
youtube.com/UltimateEarsPro
instagram.com/UltimateEarsPro

800-589-6531
uehelp@ultimateears.com
3 Jenner St. Suite 180
Irvine, CA. 92618, USA



Warning notes inside

WARNINGS

Be sure to read all warnings and instructions before using your UE in-ear monitors.

Always turn the volume down on your device before inserting UE in-ear monitors into your ears. Once the in-ear monitors are inserted, gradually increase the volume. Using monitors at high volumes can permanently damage your hearing. Ringing in your ears or other discomfort can indicate that music volume is too high. Please review the following guidelines for the maximum time exposure to sound pressure levels before hearing damage occurs. (See other side, Listen responsibly). Do not submerge the in-ear monitors in water or expose the in-ear monitors to water. Remove in-ear monitors if they cause any discomfort or if you have difficulty inserting the monitors. Remember, ears are sensitive and you should never force anything into the ear canal. Consult regularly with a physician or audiologist if you have problems hearing, excessive wax build-up or any discomfort after use.

Hearing Protection

At Ultimate Ears we are committed to hearing protection. Our personal monitors are designed to block harmful, often destructive levels of sounds while delivering the clear, consistent mix you desire. Used wisely, Ultimate Ears personal monitors can protect your hearing by significantly lowering ambient sound while listening at significantly lower Sound Pressure Levels (SPL's). Please be extremely careful with excessive volume directly in the ear.

Listen Responsibly

Hearing health is critical to the enjoyment and to the quality of life. Protect your hearing by listening to your monitors in a responsible manner. According to OSHA (Occupational Safety Health Administration 29CFR1910.95) the following SPL's are recommended and deemed to be Permissible Noise Exposures.

SOUND PRESSURE LEVEL DB(A)	PERMISSIBLE NOISE EXPOSURE DURATION (PER DAY)
90	8 HOURS
95	4 HOURS
100	2 HOURS
105	1 HOUR
110	30 MINUTES

To avoid hearing damage, you should not be exposed to Sound Pressure Levels above 115dB(A). For more information visit the OSHA website at www.osha.gov.

DON'T WORRY, YOU'RE COVERED

Ultimate Ears In-Ear Monitor Limited Warranty

Ultimate Ears warrants that your Universal In Ear Monitor Product (external shell and/or internal components) ("Product") shall be free from defects in material and workmanship for one (1) year from the date of purchase. Except where prohibited by applicable law, this warranty is nontransferable and is limited to the original purchaser. This warranty gives you specific legal rights, and you may also have other rights that vary under local laws. Ultimate Ears' entire liability and your exclusive remedy for any breach of warranty shall be, at Ultimate Ears's option, (1) to replace the Product, or (2) to refund the price paid, provided that the Product is returned to the point of purchase, or such other place as Ultimate Ears may direct, with a copy of the sales receipt or dated itemized receipt. Shipping and handling charges may apply except where prohibited by applicable law. Ultimate Ears may, at its option, use new or refurbished or used parts in good working condition to repair or replace any Product. Any replacement Product will be warranted for the remainder of the original warranty period or thirty (30) days, whichever is longer or for any additional period of time that may be applicable in your jurisdiction. This warranty does not cover problems or damage resulting from (1) accident, abuse, misapplication, or any unauthorized repair, modification or disassembly; (2) improper operation or maintenance, usage not in accordance with product instructions or connection to improper voltage supply; (3) use of consumables, not supplied by Ultimate Ears except where such restriction is prohibited by applicable law; or (4) non-Ultimate Ears branded parts and accessories even if sold with the Product.

How to Obtain Warranty Support. If you find it necessary to return your Product, please complete the RMA form found at pro.ultimateears.com and follow the instructions provided. Warranty claims and any other product related questions should be addressed directly to Ultimate Ears at pro.ultimateears.com. The addresses and customer service contact information for Ultimate Ears can be found in the documentation accompanying your product and on the web at pro.ultimateears.com. Limitation of Liability. ULTIMATE EARS SHALL NOT BE LIABLE FOR ANY SPECIAL, INDIRECT, INCIDENTAL OR CONSEQUENTIAL DAMAGES WHATSOEVER, INCLUDING BUT NOT LIMITED TO LOSS OF PROFITS, REVENUE OR DATA (WHETHER DIRECT OR INDIRECT) OR COMMERCIAL LOSS FOR BREACH OF ANY EXPRESS OR IMPLIED WARRANTY ON YOUR PRODUCT EVEN IF ULTIMATE EARS HAS BEEN ADVISED OF THE POSSIBILITY OF SUCH DAMAGES.

Duration of Implied Warranties. EXCEPT TO THE EXTENT PROHIBITED BY APPLICABLE LAW, ANY IMPLIED WARRANTY OR CONDITION OF MERCHANTABILITY OR FITNESS FOR A PARTICULAR PURPOSE OF THIS PRODUCT IS LIMITED IN DURATION TO THE DURATION OF THE APPLICABLE LIMITED WARRANTY PERIOD FOR YOUR PRODUCT. Additional Rights. Some states do not allow limitations on how long an implied warranty lasts, or allow the exclusion or limitation of incidental or consequential damages, so the above limitations or exclusion may not apply to you. This warranty gives you specific legal rights, and you may also have other rights that vary from State to State or by country or other jurisdiction. National Statutory Rights. Consumers have legal rights under applicable national legislation governing the sale of consumer goods. Such rights are not affected by the warranties in this Limited Warranty.

No Other Warranties. No Ultimate Ears dealer, agent, or employee is authorized to make any modification, extension, or addition to this warranty. Warranty Periods. Please note that in the European Union, any warranty period less than two (2) years shall be increased to two (2) years.

Address: Ultimate Ears, 3 Jenner St., Suite 180, Irvine, CA 92618
Phone: (800) 589-6531