

*Harley Benton*

DIY-kit

Ukulele Concert

Thomann GmbH  
Hans-Thomann-Straße 1  
96138 Burgebrach  
Germany  
Telephone: +49 (0) 9546 9223-0  
Internet: [www.thomann.de](http://www.thomann.de)

24.10.2022, ID: 490869

---

## Table of contents

1	Safety instruction.....	5
2	Scope of delivery.....	6
3	Assembly instructions.....	7
4	Protecting the environment.....	12



# 1 Safety instruction

**DANGER!****Danger for children**

Ensure that plastic bags, packaging, etc. are properly disposed of and are not in the reach of babies and young children. Choking hazard!

Ensure that children do not detach any small parts (e.g. knobs or the like) from the product. They could swallow the pieces and choke!

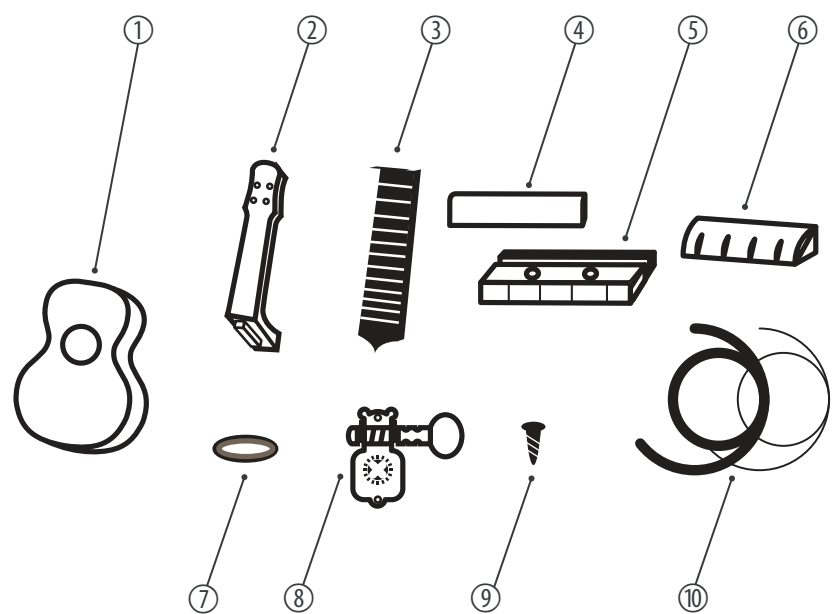
Never let children play unattended with the product.

**CAUTION!****Risk of injury to the hands**

When assembling and screwing the individual parts, pay attention to sharp edges on tools, screws and components.

## 2 Scope of delivery

Thank you for purchasing this Ukulele kit. In addition to this manual, the following items are included:



1	Body
2	Neck
3	Fretboard
4	Saddle
5	Bridge
6	Nut
7	Fixing rings for machine heads (4 pcs.)
8	Machine heads (4 pcs.)
9	Mounting screws for machine heads (8 x short) and bridge (2 x long)
10	Strings (4 pcs.)

The assembly is described in detail in the following sections.

### 3 Assembly instructions

#### Useful tools and materials

Provide the following tools and materials for the assembly of the Ukulele:

- Wood glue
- Phillips screwdriver
- Rubber bands
- Clamping or adhesive tape
- Gloss paints
- Sandpaper



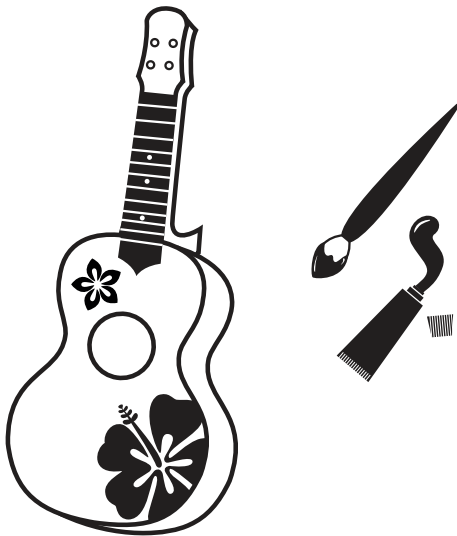
*Make sure when gluing that all adhesive surfaces are flat and clean to ensure an optimal connection of the individual parts.*

*Always follow the processing instructions supplied by the adhesive manufacturer.*



*When applying spray paint, you must wear a dust mask.*

#### Finishing the body



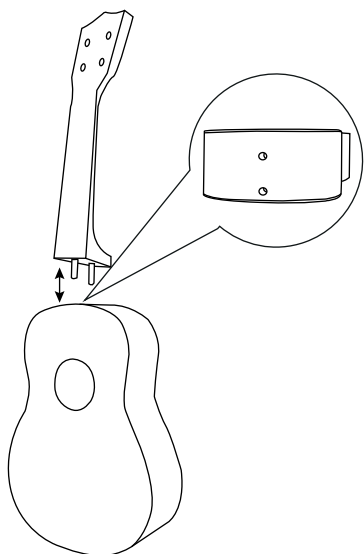
Before assembling the Ukulele, you can paint the body with commercial wood paint completely or decorate it with patterns. DIY stores offer a wide selection of paints and varnishes in spray cans that can be applied without any special knowledge.

Before you start painting, carefully mask the adhesive surface for the bridge, as painted surfaces do not ensure solid compound (for dimensions and position of the bridge, see ↶ 'Mounting the bridge, inserting the saddle' on page 9).

Make sure that all surfaces are free of dust and dirt. Carry out all painting operations in a well-ventilated, dust-free environment. Considered and careful working are key factors for a qualitatively satisfactory result. It is recommended that you first try out the colour and technique on another piece of wood.

Paint the body edges first and let them dry. If the edges are dry, go on with front and back side. By layered, successive application you can achieve a uniform coating structure. If you notice surface irregularities, wait until the paint has dried completely and correct them with fine sandpaper (e.g. 800 +) before proceeding to paint. For full coverage apply three or more layers. Wait another two to three days to dry until the paint is fully cured. Polish or burnish the body until it meets your expectations. Take care not to buff too vigorously as this may remove the finish.

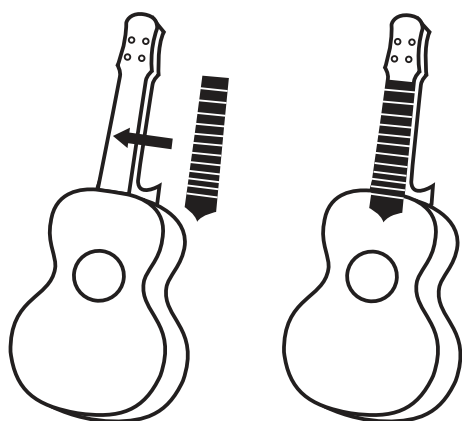
### Glueing neck and body



The neck is fastened with a tongue and groove connection to the body. First, check whether the connection between neck and body fits correctly. Wood slightly changes its shape over time. If the neck sits too tight in the groove on the body, a slight adjustment with a sharp wood chisel or sandpaper may be needed.

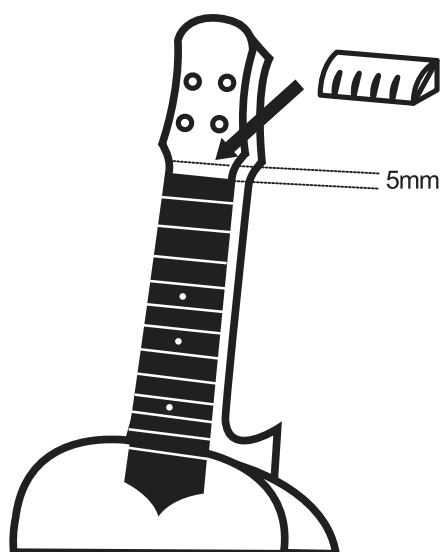
Apply wood glue to groove, tongue and the rest of the neck heel, which comes into contact with the body. Position the neck on the body and fix the neck with a clamping or adhesive tape. Re-check the correct position of the neck to the body **before** the glue joint has dried.

### Gluing the fretboard



The fretboard is glued to the neck. Apply wood glue on both surfaces. Position the fretboard on the neck and align it so that at the base of the headstock a 5 mm clear space remains for mounting the nut. To dry the adhesive joint, fix the fretboard with rubber rings on the neck.

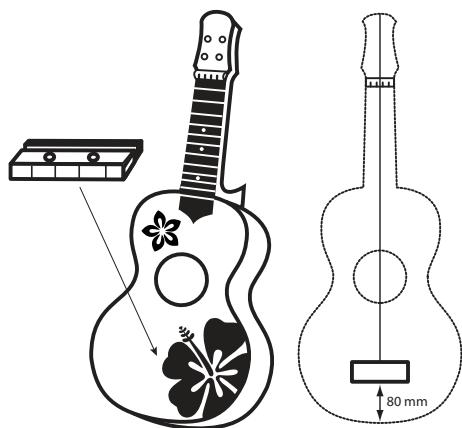
### Gluing the nut



The nut is to be glued above the fretboard on the neck (needed clearance between fretboard and headstock 5 mm, see previous section). Apply wood glue on both surfaces. Put the nut on the neck and fix it to dry the adhesive joint with rubber rings on the neck.



## Mounting the bridge, inserting the saddle



The bridge is to be glued in the middle of the body surface and fixed with the two long screws. First mark the correct position of the bridge on the body surface. Note the spacing dimensions shown in the figure.

Apply wood glue on both surfaces. Put the bridge on the body surface and fix it to dry the adhesive joint gently with a screw clamp.



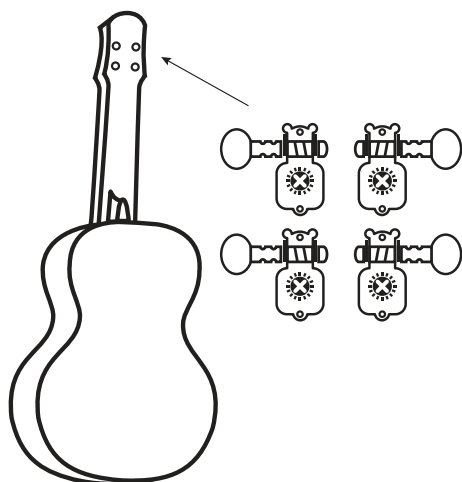
### NOTICE!

Tighten the clamp very carefully and only hand tight. Excessive force may damage the body surface.

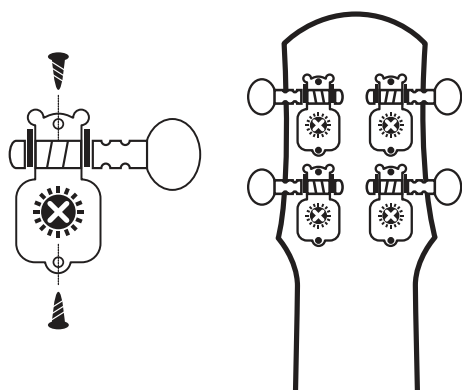
After glueing the bridge, drill the two screw holes with a 1.5-mm wood drill by through the two blind holes in the bridge and the body surface. Fix the bridge with the supplied long screws on the body surface. Then place the protective caps on the screw heads.

Finally, insert the saddle into the designated groove of the bridge.

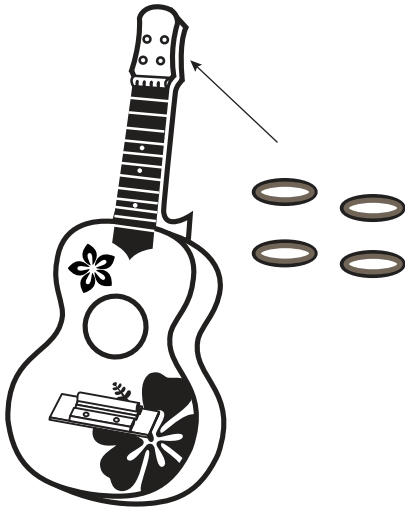
## Mounting the machine heads



Insert the four machine heads from the rear side of the headstock into the holes provided.

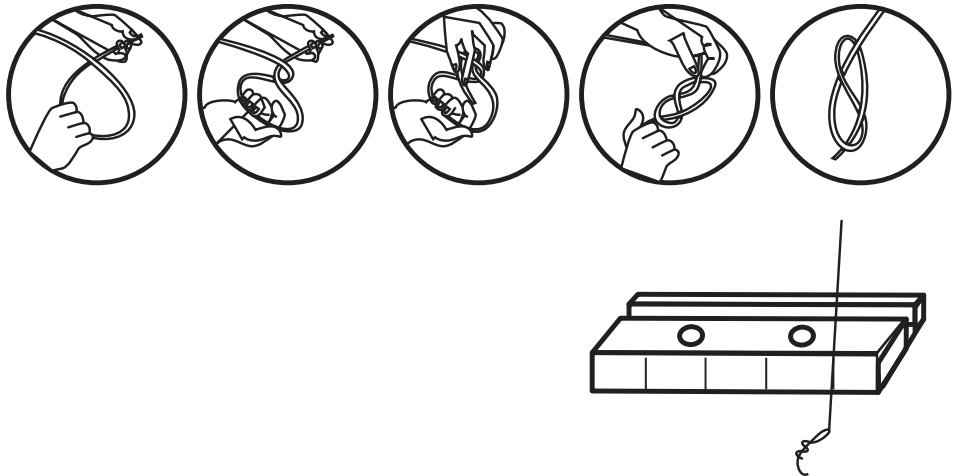


Fasten the four machine heads with two short screws each.



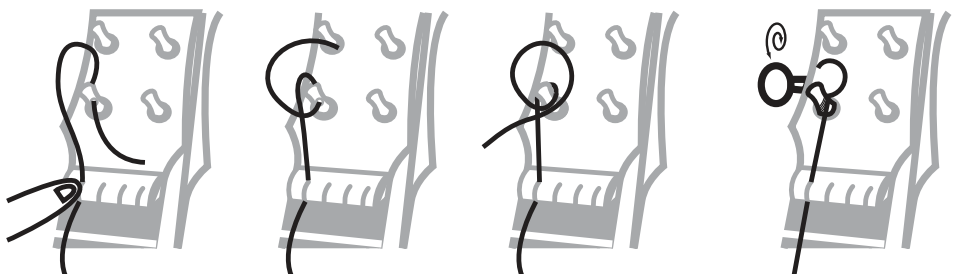
Press the four fixing rings for the machine heads from the front into the respective holes of the headstock.

### Stringing the Ukulele



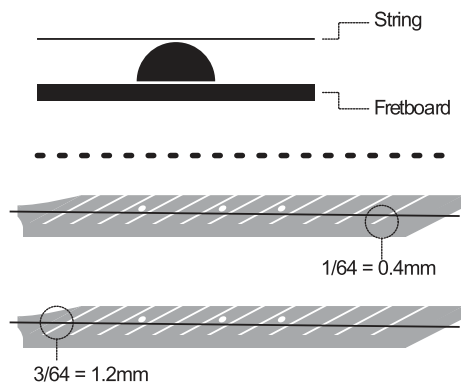
The package includes a set of strings for the Hawaiian tuning (G – C – E – A). Tie a knot at one end of the strings (simple knot for the two thicker strings, double knot for the two thinner strings) and insert the strings into the grooves of the bridge as shown in the figure:

- top position: G string (second thickest string)
- second position: C string (thickest string)
- third position: E string (second thinnest string)
- lowest position: A string (thinnest string)



Thread the loose ends of the four strings into the holes of the designated machine heads. Make sure to attach each of the four strings with two to three turns securely to the tuning pins (see figure). First, slightly pre-tighten all strings and check the action as described in the following section.

## Checking the action



At the first fret, the distance between string and fretboard should be approx. 0.4 mm, at the twelfth fret approx. 1.2 mm. If necessary, check the connections and positioning of the components.

## Tuning

The package includes a set of strings for the Hawaiian tuning (G – C – E – A). Tune the strings using an appropriate tuner or with the help of another instrument by ear.

## 4 Protecting the environment

### Disposal of the packaging material



For the transport and protective packaging, environmentally friendly materials have been chosen that can be supplied to normal recycling.

Ensure that plastic bags, packaging, etc. are properly disposed of.

Do not just dispose of these materials with your normal household waste, but make sure that they are collected for recycling. Please follow the notes and markings on the packaging.







