

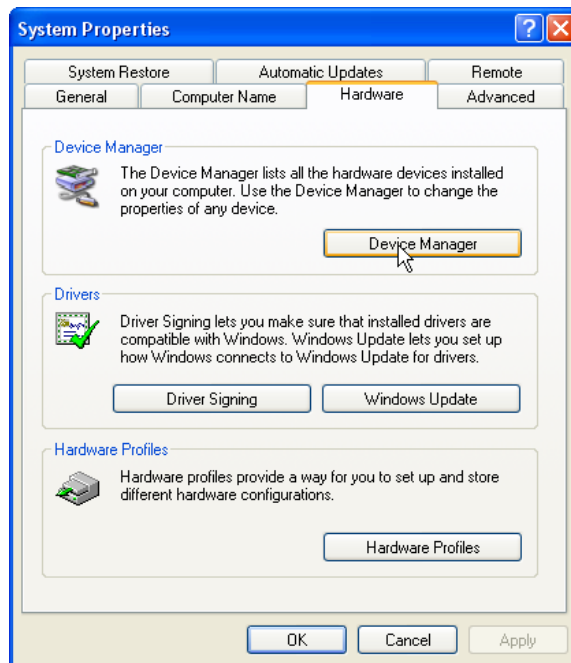
PC port setting direction

I、 device connection way chose: turn on device, press 'UTILITY' enter mainmenu——rotate NAV/PAR1 until appear 'Interface Utilities'——press 'ENTER' then enter into 'INTERFACE UTILITY' sub-menu—— chose 'Interface Setup'——press 'ENTER' again enter into 'Interface Setup' sub-menu——use 'PM2 'or 'PM3' chose the connection way——confirm with 'ENTER' (after confirmation the selected option screen will appear an asterisk"*"eg: Source:USB *), then use 'ESC' exit this page.

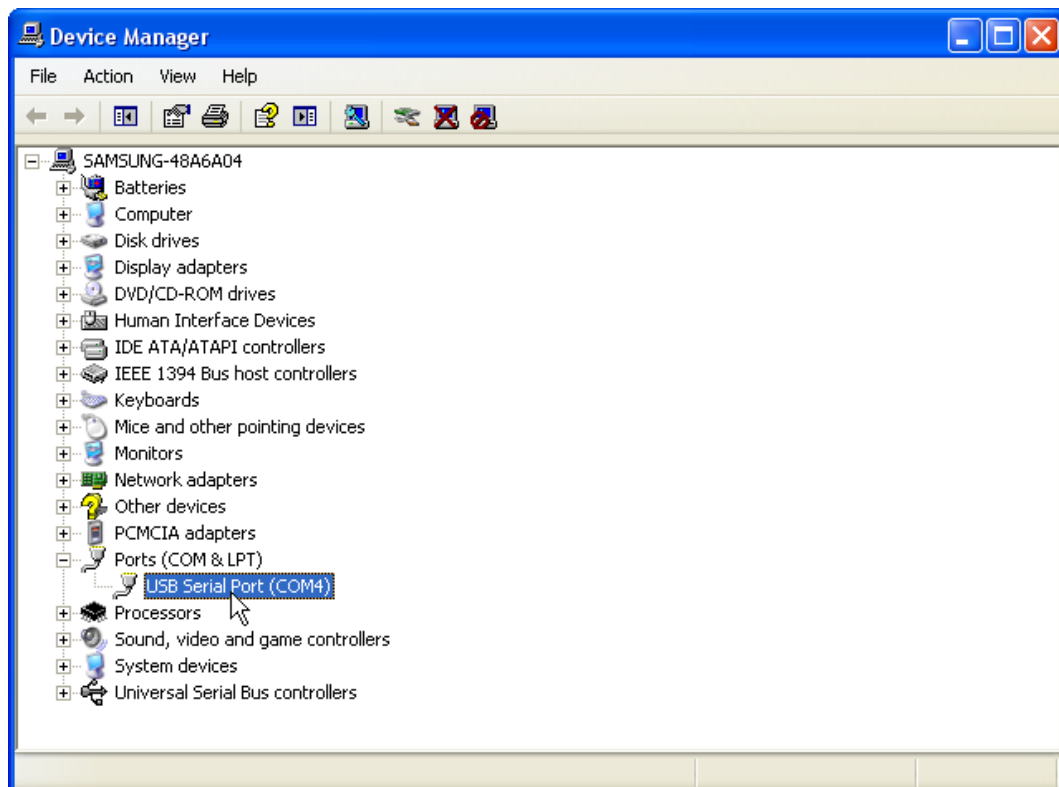
II、 PC port and SW connection setting:

1. Turn on device, via cable (USB、 RS232、 RS485) connect device with PC, follow here below steps to check COM port.

Click right button on mouse "My computer"——properties——HW——Device Manager——port (see picture 1、 2)

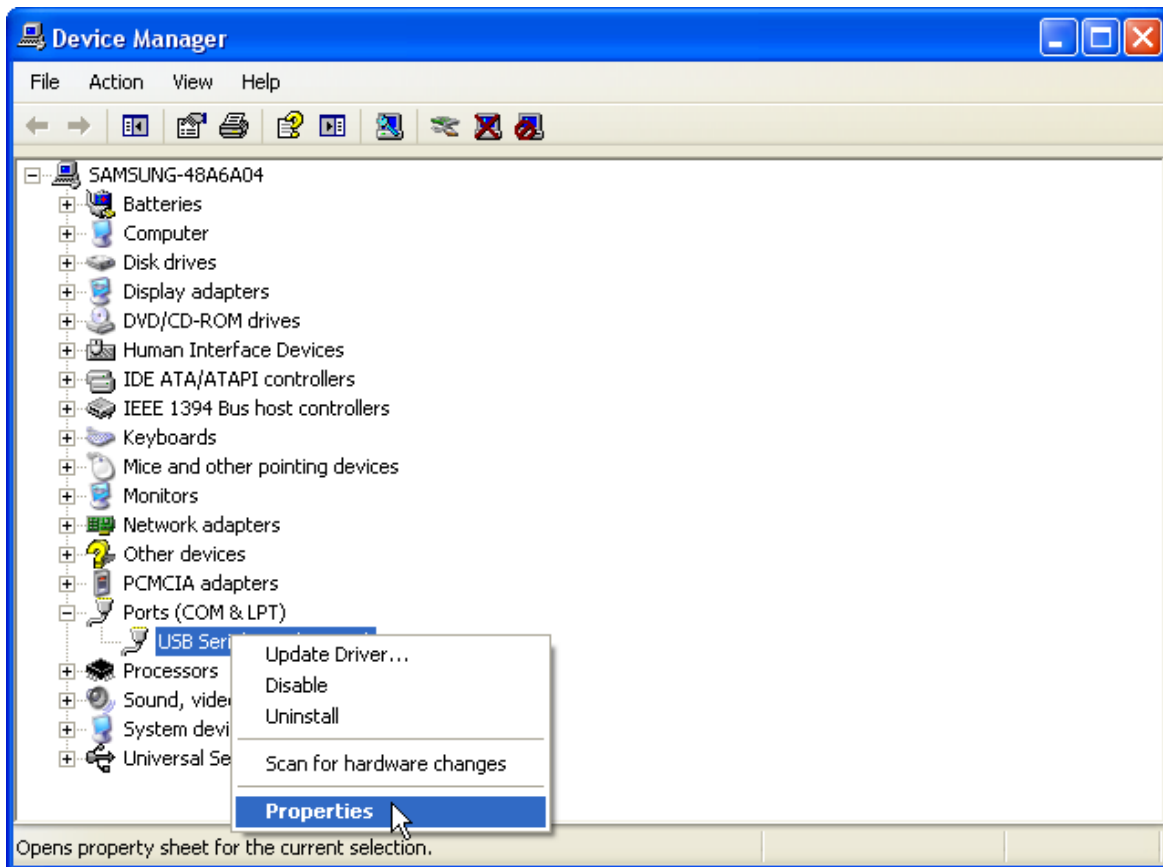


Picture 1

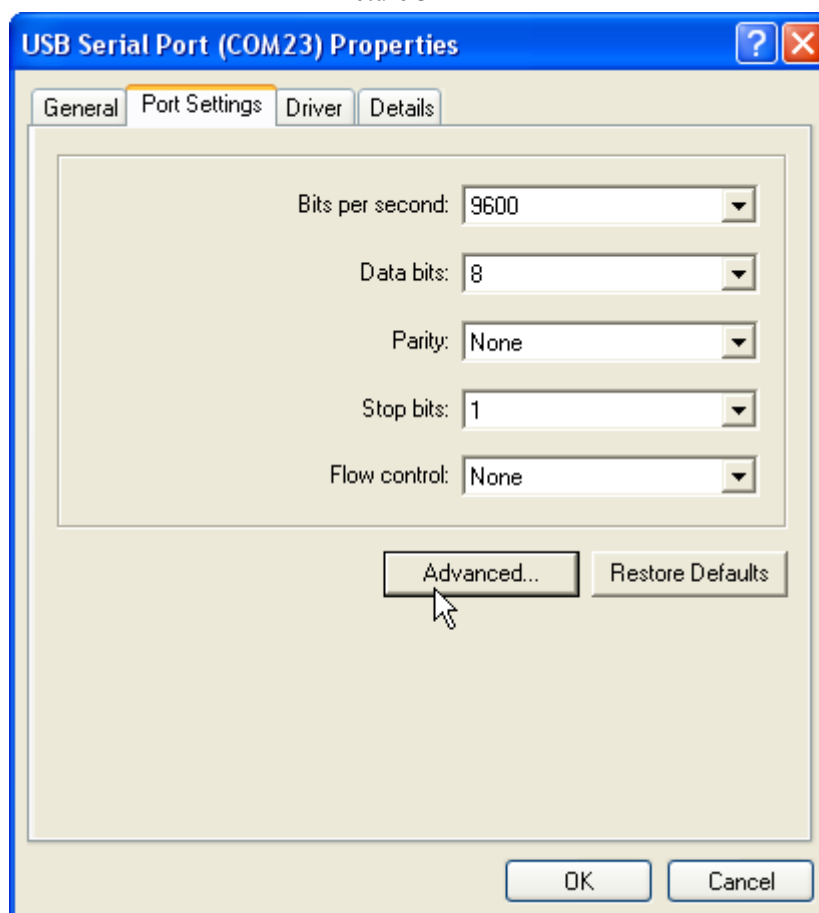


Picture 2

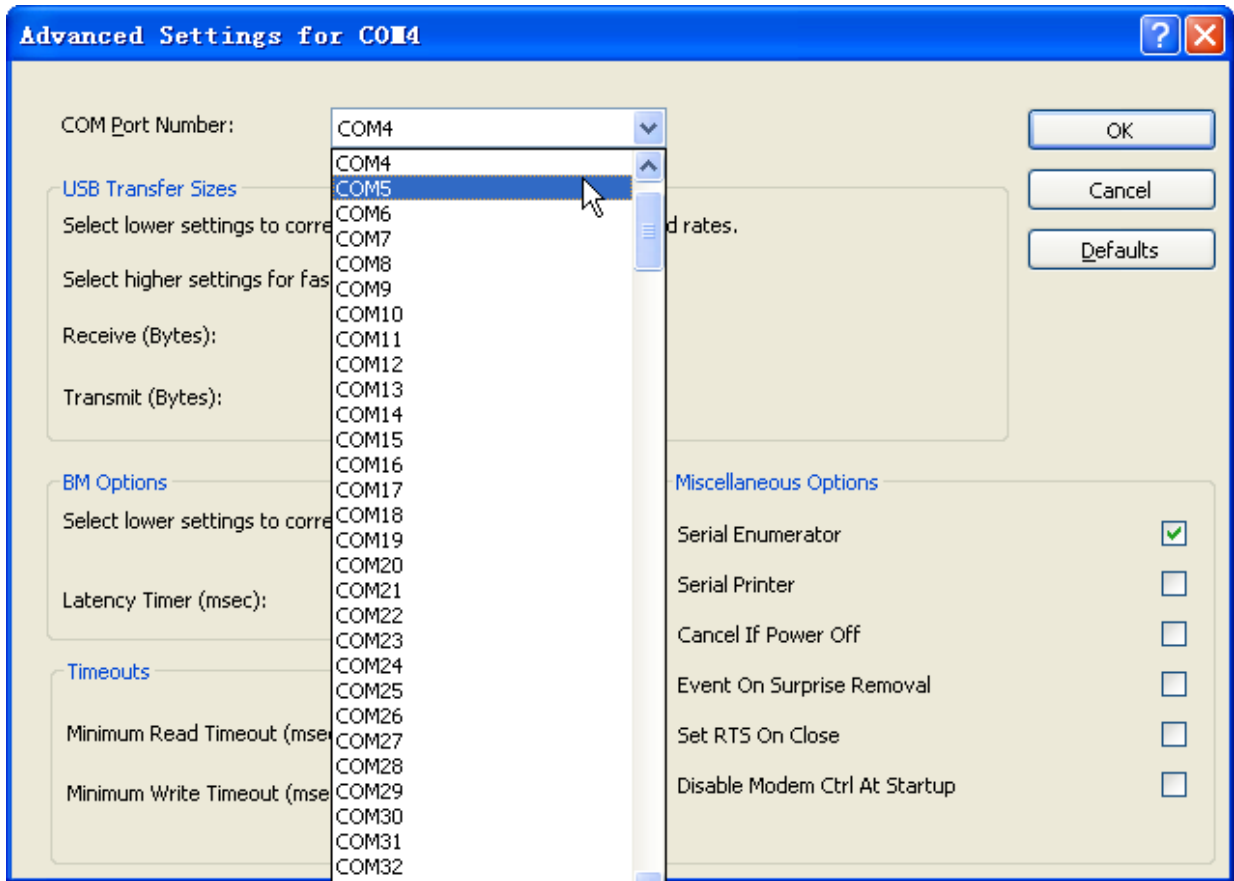
2. check COM number [eg, picture 2: USB Serial Port(COM4)] .If number > 16, click right button on mouse on “USB Serial Port(COM**)” icon——properties——Port settings——Advanced...——COM Port Number to chose the number which is smaller than 16. (eg, picture 3、 4、 5)



Picture 3

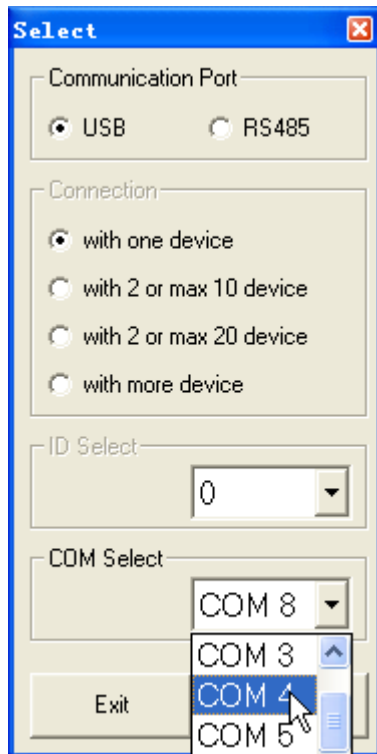


Picture 4

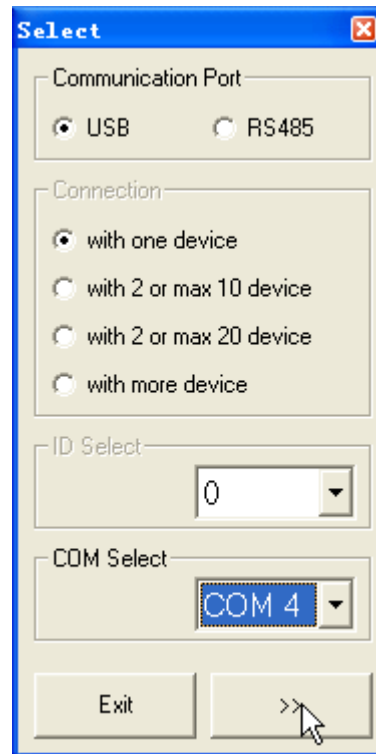


Picture 5

3. Start PC remote control SW, choose the port which is corresponding to PC setting “USB Serial Port(COM**)” (eg, picture 6), then click “>>” (eg, Picture 7) enter to PC control SW (some device can connect automatically, no need connect by hand) .



Picture 6



Picture 7