

GEC8 JR (2nd Edition) Manual

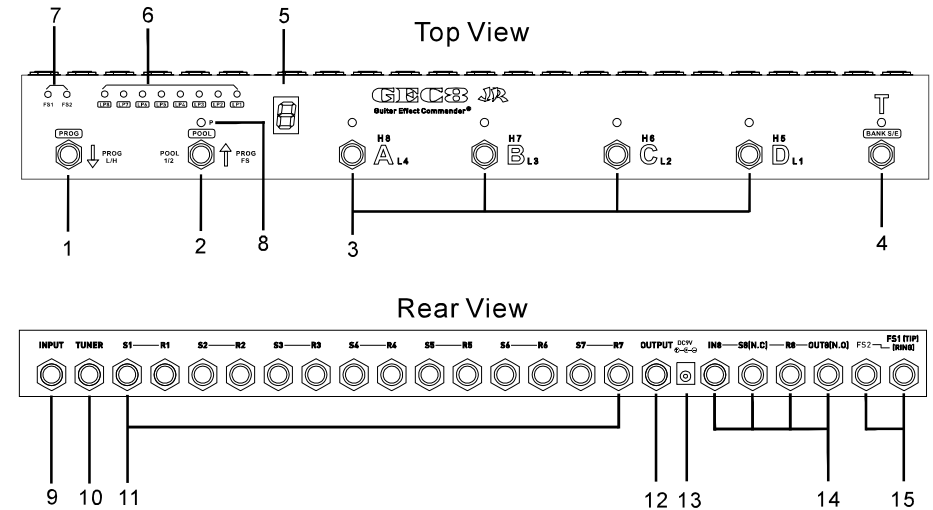
Features:

- Compact footprint : 480(L) x 60(W) x 52(H) mm
- Instant recall, no delay at all.
- Relay truebypass design.
- 8 loops in total, 7 series loops and 1 separate loop.
- 2 dedicated footswitch (latch type).
- Individual Tuner/Mute switch.
- Master bypass by double press PRESET switch.
- Programmable amp switching under master bypass.
- Store up to 80 presets, 4 presets / bank, 20 banks.
- Intuitive Program/Rehearsal mode.

Guitar Effect Commander

Be sure to read this manual before using the product in order to ensure safe operation.

1- Overview



(1) ↓ “BANK DN”

Hit this switch to decrease the bank number.
In program mode, hit this switch to shift the programming between loop1~4 (L) and loop5~8 (H).
Hold this switch to enter/exit “program mode”.

(2) ↑ “BANK UP”

Hit this switch to increase the bank number.
in program mode, hit this switch to program the amp footswitches (FS1/FS2).
Hold this switch to enter/exit “pool set mode”.

(3) “A” “B” “C” “D”

Preset switches
Hit the switch to recall a preset.
In program mode, “A” / “B” / “C” / “D” programs loop 4/3/2/1 (L) or loop8/7/6/5 (H)

(4) “T”

TUNER switch
Hit it to engage the connected tuner, it also mutes the output when tuner is engaged.
Hold this switch to enter/exit “start/end bank” edit mode.

(5) SCREEN

The screen shows the bank information or programming information.

(6) LOOP INDICATOR

The engaged/bypassed loop turns on/off its indicator.

(7) FS1/FS2 (Footswitch indicators)

The indicator is on when FS1/FS2 is open, and off when FS1/FS2 is latched.

(8) Programming Indicator

It lights up when the unit is under program mode.

(9) INPUT

Connects to guitar.

(10) TUNER

Connects to tuner.

(11) (S1,R1), (S2,R2).....(S7,R7)

Loop pairs, connects SEND (S*) to pedal input, RETURN(R*) to pedal output.

(12) OUTPUT

OUTPUT jack of the switcher, the input signal reaches this jack via loop1~7.

(13) DC Jack

5.5 x 2.1 mm type, requires a negative center DC 9V / 300mA power supply.

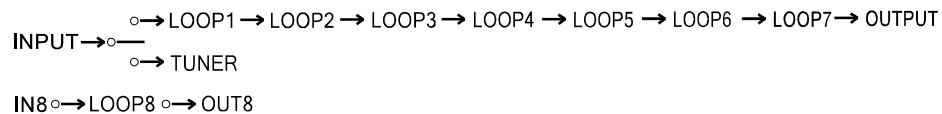
(14) LOOP8

Loop8 is a separate loop, IN8 is input of this loop, S8 sends the signal and R8 returns it, OUT8 is the output of loop8. S8 also functions as latching N.C (Normally Closed) footswitch which is able to switch amplifier channel, OUT8 also functions as latching N.O (Normally Open) footswitch.

(15) FOOTSWITCH Jacks

There are two footswitch jacks FS1 and FS2 which are for amplifier channel switching, The TIP and Sleeve of FS1/ FS2 are normally closed (indicators off). FS1 is a stereo (TRS) jack, the ring of FS1 jack connects to the tip of FS2.

2- Signal Path



3- Preset

Presets A/B/C/D store the combination of loops and amp footswitches, no more tap dancing by just recalling a preset. GEC8 jr. have 2 bank pools, each pool contain 10 banks 1~10 (10 displayed as "0"), each bank have 4 presets A/B/C/D GEC8 jr. have 20 banks and 80 presets in total. Figure 1 shows the preset organization.

POOL 1										
BANK	1	2	3	4	5	6	7	8	9	0
PRESET	A/B/C/D	A/B/C/D	A/B/C/D	A/B/C/D	A/B/C/D	A/B/C/D	A/B/C/D	A/B/C/D	A/B/C/D	A/B/C/D

POOL 2										
BANK	1.	2.	3.	4.	5.	6.	7.	8.	9.	0.
PRESET	A/B/C/D	A/B/C/D	A/B/C/D	A/B/C/D	A/B/C/D	A/B/C/D	A/B/C/D	A/B/C/D	A/B/C/D	A/B/C/D

Figure 1

4- Recall a Preset

Power up the switcher it enters recall mode, hit BANK DN or BANK UP to change the bank number, recall the expected preset by hitting A/B/C/D preset switch, hit the engaged preset again will master bypass the switcher. Bank number range 1~10 (0 as 10) , there are two bank pools, each pool contain 10 banks, pool 1 banks are displayed with "1~10" while pool 2 banks are displayed with "1.~10. " .

5- Program a Preset

When a preset is recalled, hold "↓" BANK DOWN switch for 2 seconds, the switcher enters program mode and start to program this active preset. The screen displays "L" then loop1~4 are ready to be programmed, hit A/B/C/D to program loop4/3/2/1. Hit "↓"BANK DOWN once, the screen turns to "H", then loop5~8 is ready, hit A/B/C/D to program loop8/7/6/5, hold "↓"BANK DOWN again to exit program mode.

Program the amp footswitch FS1/FS2 by hitting "↑" BANK UP switch, the FS1/FS2 changes as below order, both off - FS1 on - FS2 on - FS1 and FS2 on - both off again. Figure 2 shows preset A as an example,

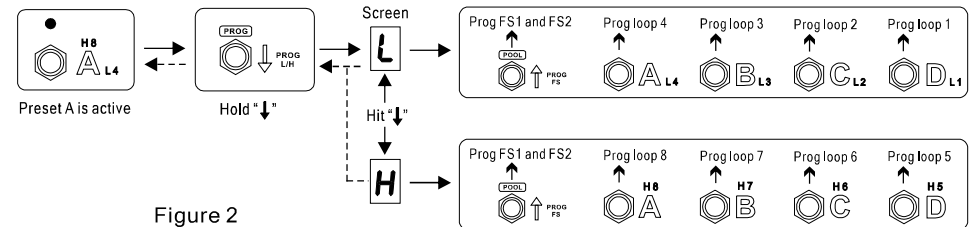


Figure 2

GEC8 jr. allows user to setup a different amp switching when it is master bypassed, be noted that each bank will have only one amp switching setting of master bypass. Figure 3 shows how to program an amp switching of master bypass.

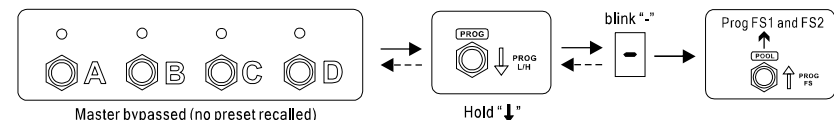


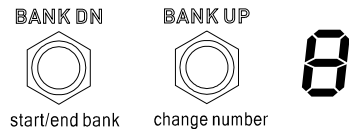
Figure 3

6- Pool Selection

In recall mode, hold "↑"BANK UP switch for 2 seconds, the switcher enters pool selection, the screen displays "P" (pool1) or "P." (pool2), hit "↑"BANK UP once to select the pool number.
Hold "↑"BANK UP switch again to exit pool selection.

7- Active Bank Setup Mode

GEC8 jr. allows user to setup start/end bank number to achieve faster access of presets. For example, if user wants to scroll the bank numbers only from 3 to 6, the start bank number could be set as 3 and the end bank number could be set as 6, then the bank number scrolling would be "3,4,5,6,3...."
In recall mode, pick a preset, hold the TUNER switch for 2 seconds to enter active bank setup mode, the "P"programming indicator starts to blink, user can define the the start/end bank by pressing BANK DN switch, blink number as start bank and static number as end bank.
PS: the end bank number must be greater than the start bank number.



Hit BANK DN to change the start/end bank, Hit BANK UP to change the bank number, the range of the bank is 1~10 (0 as 10), when the start/end bank are finalized, hold TUNER switch to store the setting and exit to recall mode.

PS: The active bank setup does not change any of the presets, it just setup an access range of the presets, for example, the start/end bank number is 7/9, the scroll bank range is 7,8,9, user can access any presets stored in bank 7/8/9. The presets in other banks are idle in the memories until they are set to active.

8- Master bypass enable/disable

GEC8 jr. allows user to enable/disable master bypass feature, when the feature is enabled, double press on an active preset will trigger a master bypass, if the feature is disabled, press preset switch will only recall without master bypass feature even double press the active preset.

BANK UP Power up GEC8 jr when holding BANK UP till the screen displays "d" or "-", "d" means double press - master bypass enabled
"-" means master bypass disabled.
hit BANK UP to enable/disable master bypass feature, hold BANK UP for 2 seconds to exit to recall mode.

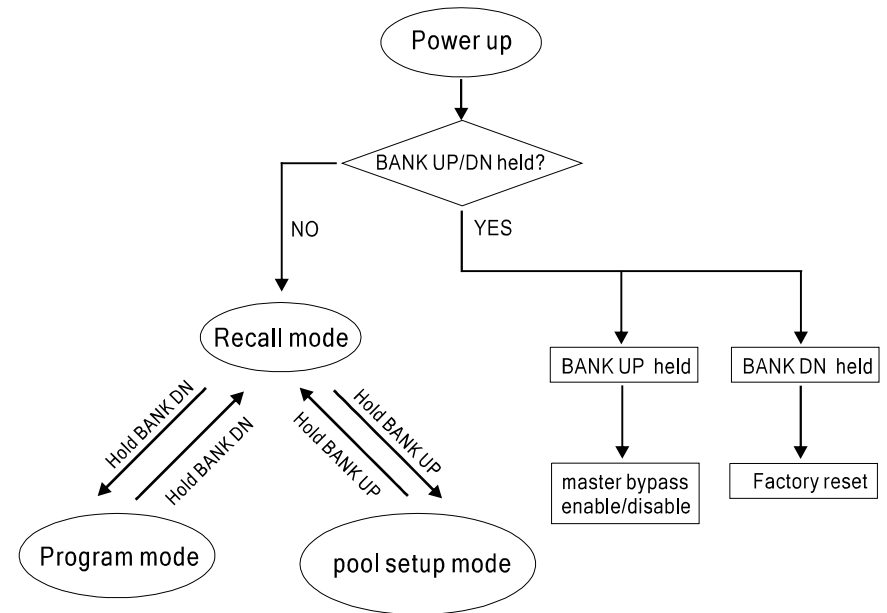
9- Restoring Factory presets

CAUTION: This procedure will erase any custom preset saved in the switcher and restore them to factory.



Power up the switcher when holding BANK DN it enters factory reset mode, screen shows "F" then ask "YES"(y) or "NO"(n), press BANK UP to choose "y", then hold BANK DN to count down 5 seconds till all memory is erased and restored, then exit to recall mode automatically.

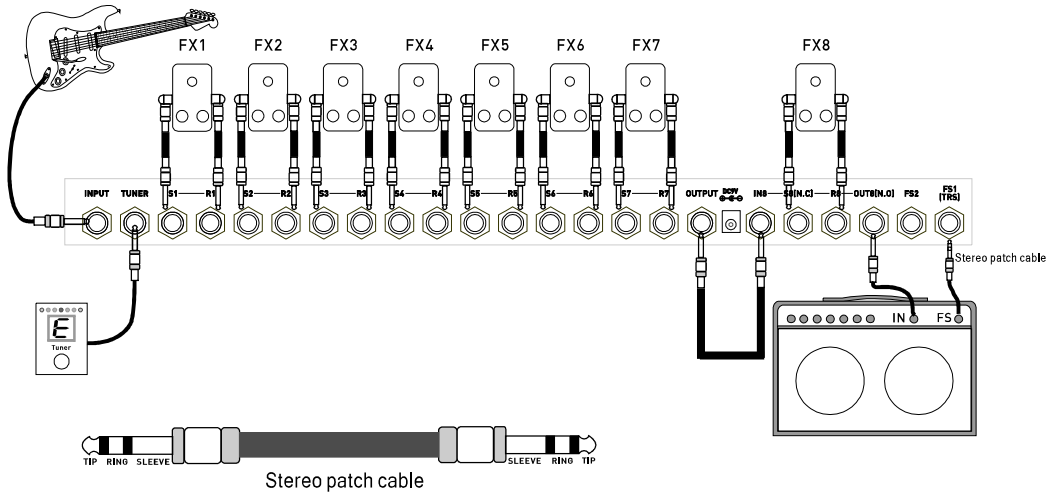
10- Mode Chart



9- Specifications

Dimensions.....480(L) x60(W)X52(H) mm
Weight.....1000g
Power Supply.....DC9V (Negative Center)
Current Drain.....max. 300mA
Max. Input Vp-p..... 30V

Typical Config 1 - 8 pedals & 2 AMP Channel Switching



Typical Config 2 - 7 pedals & 3 AMP Channel Switching

