

User manual

This manual contains important information on the safe operation of the product. Read and follow the safety advices and instructions given. Retain the manual for future reference. If you pass the product on to others please include this manual.

Safety instructions

Intended use

This device is intended to amplify and reproduce signals from musical instruments. Any other use or use under other operating conditions is considered to be improper and may result in personal injury or property damage. No liability will be assumed for damages resulting from improper use.

Danger for children



Ensure that plastic bags, packaging, etc. are disposed of properly and are not within reach of babies and young children. Choking hazard! Ensure that children do not detach any small parts from the product. They could swallow the pieces and choke!

Where to use the product

Never use the product

- in conditions of extreme temperature or humidity
- in extremely dusty or dirty areas
- at locations where the unit can become wet

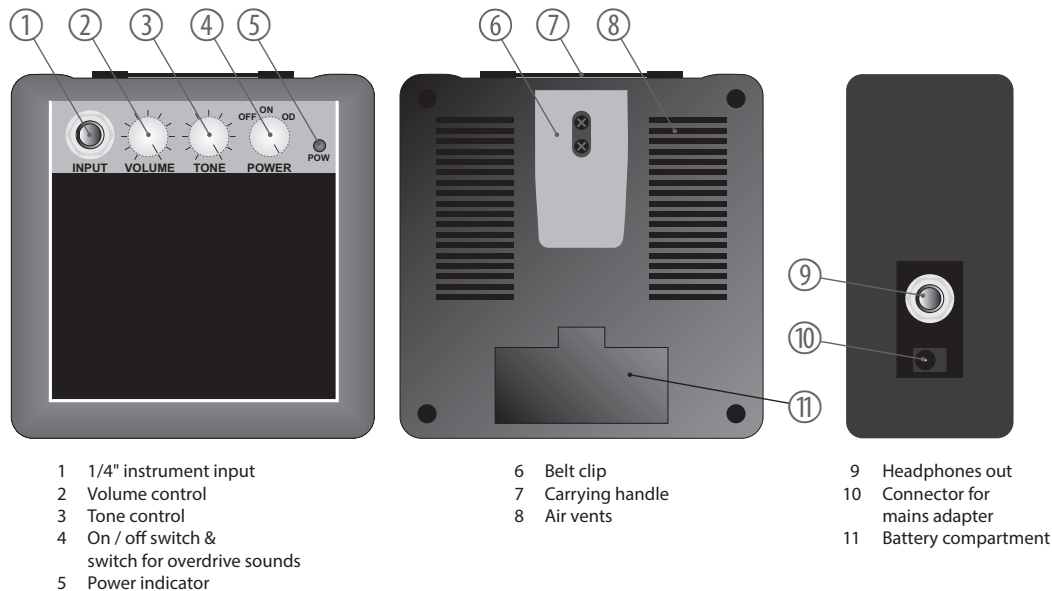
General handling

- To prevent damage, never use force when handling the product.
- Never immerse the product in water. Just wipe it with a clean dry cloth. Do not use liquid cleaners such as benzene, thinners or flammable cleaning agents.

Features

- Miniamp for clean and overdrive sounds
- Volume and tone control
- Headphones out
- Belt clip on rear panel
- Operation via 9 V mains adapter or 9 V battery (not supplied)

Operating elements



- 1 1/4" instrument input
- 2 Volume control
- 3 Tone control
- 4 On / off switch & switch for overdrive sounds
- 5 Power indicator

- 6 Belt clip
- 7 Carrying handle
- 8 Air vents

- 9 Headphones out
- 10 Connector for mains adapter
- 11 Battery compartment

Using the product

1. To power the unit, open either the battery compartment on the back of the unit, insert a 9 V battery and replace the battery compartment cover, or connect a suitable 9 V power adapter to the DC9V socket on the side of the unit. The negative pole must be present at the centre contact (+ - -).
2. Connect an electric guitar to the INPUT jack via a 1/4" instrument cable.

Danger of property damage by voltage peaks



Always connect the instrument cable to the instrument first and then to the amplifier to avoid damages to the loudspeaker.

3. Set the POWER switch to the ON position to turn the unit on. When the device is switched on, the red POW LED is lit. In this position, the unit will produce clean sounds. For distorted sounds, move the switch to the OD position (Overdrive).
4. To adjust the volume, turn the VOLUME knob to the desired position.

5. Turn the TONE knob clockwise to produce a bright tone. Turn opposite for a more mellow tone.

Note on hum prevention



Neon lights or fluorescent light can cause a slight hum in the amplifier. Then change the position of your instrument or the amplifier to eliminate the hum.

6. You can connect headphones to the headphone output. This will mute the built-in speaker.

Possible hearing damage



Making music for a prolonged period and at high volume can cause hearing damage. Avoid playing the unit at full volume, especially when using headphones.

7. The clip on the back of the device can be used to attach the device to either your belt or the guitar strap. So the device is always close to you when playing.
8. After playing, set the POWER switch to the OFF position to turn the unit off. When using a 9 V power adapter, disconnect it from the mains power supply.



For the transport and protective packaging, environmentally friendly materials have been chosen that can be supplied to normal recycling. Ensure that plastic bags, packaging, etc. are properly disposed of. Do not just dispose of these materials with your normal household waste, but make sure that they are collected for recycling. Please follow the notes and markings on the packaging.



This product is subject to the European Waste Electrical and Electronic Equipment Directive (WEEE) in its currently valid version. Do not dispose of your old device with your normal household waste. Dispose of this product through an approved waste disposal firm or through your local waste facility. Comply with the rules and regulations that apply in your country. If in doubt, consult your local waste disposal facility.