

swiasonic

Bluetooth Receiver

User manual

This manual contains important information on the safe operation of the product. Read and follow the safety advice and instructions given. Retain the manual for future reference. If you pass the product on to others please include this manual.

Safety instructions

Intended use

This device is used for wireless transmission of digital audio signals via Bluetooth and their conversion to analogue signals for further processing. Any other use or use under other operating conditions is considered to be improper and may result in personal injury or property damage. No liability will be assumed for damages resulting from improper use.

Danger for children



Ensure that plastic bags, packaging, etc. are disposed of properly and are not within reach of babies and young children. Choking hazard! Ensure that children do not detach any small parts from the product. They could swallow the pieces and choke!

Where to use the product

Never use the product

- in conditions of extreme temperature or humidity
- in extremely dusty or dirty areas
- at locations where the unit can become wet

Interference with other electrical equipment

Using the device near radios or TV sets may cause interference. In this case, increase the distance between both devices.

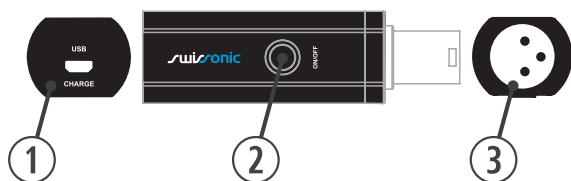
General handling

- To prevent damage, never use force when handling the product.
- Never immerse the product in water. Just wipe it with a clean dry cloth. Do not use liquid cleaners such as benzene, thinners or flammable cleaning agents.

Features

- Bluetooth transmission system
- XLR output
- Built-in rechargeable battery
- Includes Micro USB charging cable

Operating elements



- ① Micro USB charging port.
- ② On / off switch.
- ③ XLR output, unbalanced.

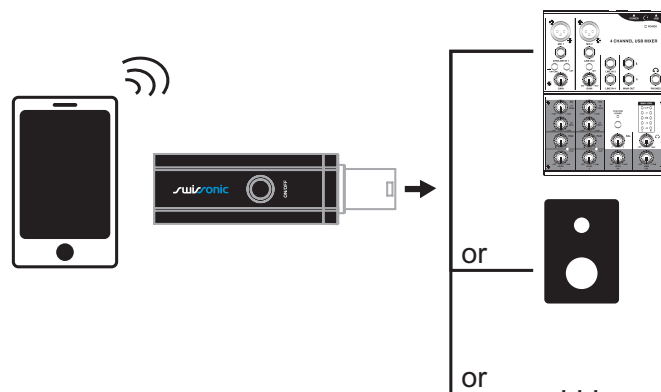
Using the product

1. Press the on / off switch (②) to turn on the unit.
2. If the LED flashes red, the built-in battery must be charged. To do this, connect the device's micro USB charging port (①) to a USB power source using the supplied charging cable. When the charging process is complete, the LED lights green. Then disconnect the device from the USB power source.
3. When the LED is flashing green and red, the device is ready to connect to a Bluetooth enabled device, such as smart phone, tablet or the like. Then establish the connection.
4. When connected, the LED is green.
5. Use a suitable cable to connect the XLR output (③) to the input of the device that you want to use to process the line level signals.



In doing so, make sure this input has not turned on phantom power, otherwise the unit may be damaged.

6. Start the media playback on the audio source.
7. To switch off the device, press the on / off switch (②).



Technical specifications

Bluetooth version	V 4.0
Power supply	Rechargeable lithium polymer battery, 3.7 V 300 mAh
Standby current	< 0.5 mA
Transmission range	10 m
Sensitivity	-80 dBm $\pm 0.1\%$ BER
Signal-to-noise ratio	≥ 75 dB
Distortion	$\leq 0.1\%$
Dimensions (W x H x D)	125 x 32 x 28 mm
Weight	approx. 100 g



For the transport and protective packaging, environmentally friendly materials have been chosen that can be supplied to normal recycling. Ensure that plastic bags, packaging, etc. are properly disposed of. Do not just dispose of these materials with your normal household waste, but make sure that they are collected for recycling. Please follow the notes and markings on the packaging.



This product is subject to the European Waste Electrical and Electronic Equipment Directive (WEEE) in its currently valid version. Do not dispose of your old device with your normal household waste. Dispose of this product through an approved waste disposal firm or through your local waste facility. Comply with the rules and regulations that apply in your country. If in doubt, consult your local waste disposal facility.