

SPECIFICATIONS

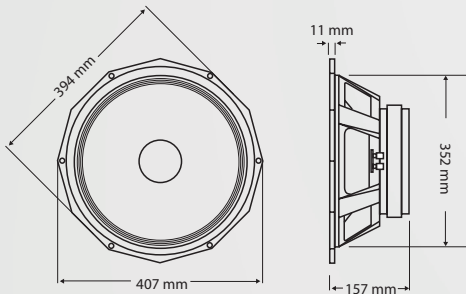
Nominal Diameter	38 cm (15")
Voice Coil Diameter	101 mm (4")
Nominal impedance	4,8 or 16 Ohms
Power Rating	600 Watts (AES)
Sensitivity (1W/1M)	98 dB
Frequency Range	40 Hz - 3 KHz
Recommended Enclosure Volume	60-200 Litres
Displacement Limit (peak-peak)	26 mm (1.02")
Resonance	45 Hz
Voice Coil	Copper
Voice Coil Winding Depth	19 mm (0.74")
Magnet Gap Depth	11 mm (0.43")
Magnet Material	Neodymium
Flux Density	1.2 T
Dust Dome Material	Paper
Suspension Material	Dual Fabric
Cone / Surround Material	Paper/Fabric

THIELE SMALL PARAMETERS

Fs	50.021 Hz
Re	5.978 Ohms
Qts	0.242
Qms	8.865
Qes	0.249
Vas	93.180 Litres
Mms	105.015 g
Sd	829.58 cm ²
Cms	96.402 μM/N
BL	28.138 T/m
Xmax	6.0 mm
Vd	0.497 Litres
Reference Efficiency	5.08 %

MOUNTING AND SHIPPING INFORMATION

Fixing Holes	x 6 Fixing Holes M6 x 8 Concealed M6
Nett Weight	7.7 Kg (16.98 lb.)
Shipping Weight	8.7 Kg (19.18 lb.)



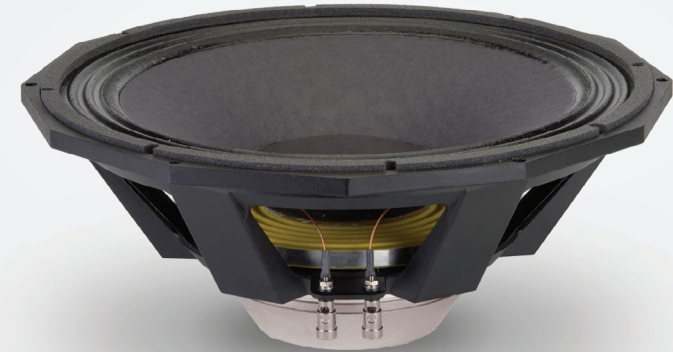
Perfectly suited for 1 x 15" or 2 x 15" horn loaded/ bandpass sub bass designs, the smooth mid range makes it easy to integrate with 1" and 2" compression drivers.

Neodymium technology ensures superb versatility in situations in which a conventional ceramic magnet transducer is unsuitable on grounds of portability or ease of installation.

The transducer delivers commanding and powerful lows in compact designs i.e. stage monitors.

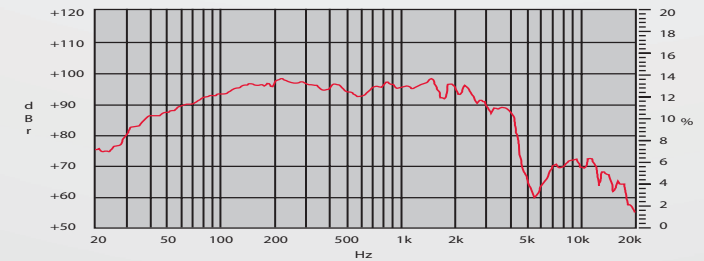
- Heavy duty 15" cast aluminium frame with extra wide flange for increased rigidity
- Sub Woofer
- Field replaceable magnet for touring applications
- 600 WRMS (AES)
- 4" copper voice coil assembly
- Neodymium magnet assembly
- A B/L in excess of 27 T/m for fast accurate lows
- Net Weight: 7.7kg

PDN.15SB40

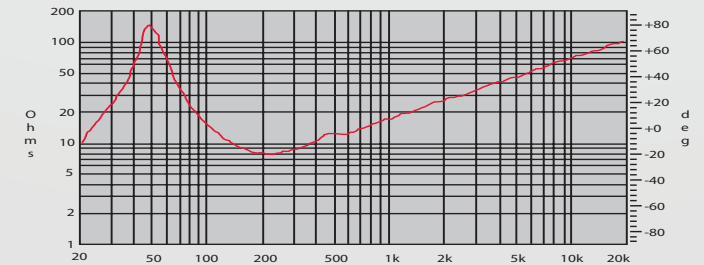


PDN.15SB40

FREQUENCY RESPONSE DATA:



IMPEDANCE:



Half space response measured in a 975 Litre sealed box.

Please note that frequency response measurements are supplied for comparison purposes only and are not a measure of the low frequency performance which may be achievable in a fully optimised system.