

HD681 Series

PROFESSIONAL MONITORING HEADPHONES

HD681 / HD681F / HD681B

Description

The HD681 series headphones offer 3 distinctive sound profiles, each with its own character. These three headphones also deliver excellent balance and clarity. The ergonomically-designed vinyl ear pieces combined with the light weight and self-adjusting headband of these headphones make them very comfortable.

Whether you're monitoring, tracking, mixing, or just listening to an MP3 or other audio source, you can expect comfort and sonic accuracy from your HD681 series headphones.

Specifications

Types	Circumaural, Semi-open
Driver	Ø50 mm, Neodymium
Sensitivity	98 dB SPL (1 mW)
Frequency Response	10 – 30,000 Hz
Max. Input Power	300 mW
Rated Impedance	32 Ω (Copper-coated aluminium wire)
Earpads	Leatherette
Cables	2.5 meter (8.2 ft.) straight
Connector	Gold-plated stereo mini plug plus 3.5-to-6.3 adapter
Finish	Black white red
Weight (w/o cable)	230 g (8.11 oz)

Included



Carrying Pouch



3.5 mm to 6.3 mm Plug Adapter

Features

- Accurate and detailed sound greatly enhances your listening experience
- Self-adjusting headband for great fit and maximum comfort
- Single sided, straight cable

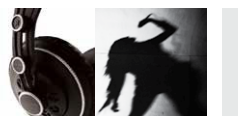
HD681

Deep low frequency **"On stage"** sound, perfect for enjoying the beauty of classical music & other large ensembles. The HD681 presents a bright and clear sound. When playing classical music, the HD681 will surprise you with its breadth, clarity and dynamic presence.



HD681F

Flat extended frequency response **"Front row"** sound image, great for pop music and capturing that sweet vocal sound. The HD681F delivers a sweet sound just as if the singer was standing right in front of you.



HD681B

Balanced character and powerful bass **"In hall"** feel, great for enjoying rock music and similar exciting performance. The HD681B optimizes a powerful bass and balanced tone, and it will be rhythm from your headphones.




This information sheet contains important information for the safe use of the product. Read and follow the safety and handling instructions given here. Please keep this information sheet for future reference. If you pass on the product described overleaf, please enclose this information sheet.

Safety instructions


Intended use

This device is used for sound reproduction close to the ear in private. Any other use or use under the conditions excluded here is considered improper and can lead to personal injury or property damage. Neither the manufacturer nor the distributor is liable for damage resulting from improper use.


Choking hazard for children

 Make sure that plastic sleeves, packaging, etc. cannot get into the reach of babies and small children. Do not allow children to use electrical devices unsupervised. They could loosen parts of the product, then swallow them and choke on them!

Danger to life from distraction

 The use of earphones or headphones can distract your attention and reduce your perception. Ambient noises will at least be less audible. Never use the device as a participant in traffic or when operating machines.

Possible hearing damage

 The use of earphones or headphones can generate volume levels that can cause temporary or permanent hearing impairment. Do not continuously expose your ears to high volume levels. Stop using the device immediately if you notice ringing in the ears or hearing loss.

Place of operation

The device must not be used


- ▶ at particularly high temperatures or humidity
- ▶ in particularly dusty or polluted places
- ▶ in places where it can be exposed to moisture

General handling


To prevent damage, never use force when handling the product. Never immerse the product in liquids. Just wipe it with a clean, dry cloth. Never use liquid cleaners such as benzene, thinner, or flammable detergents to clean the product.

Disposal

Old devices

 Devices with this label are subject to the current EU directive on waste electrical and electronic equipment (WEEE directive) and may not be disposed of with household waste, but only via a suitable disposal company. Ask your local authority or your specialist dealer about your options for proper disposal.

Packagings

 Environmentally friendly materials have been selected for the packaging and are to be recycled. Do not just throw away plastic sleeves, packaging, etc., but recycle them. If necessary, note the instructions and labels on the packaging.