



HIGH FREQUENCY DRIVERS



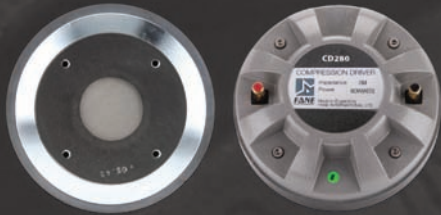
FANE High Frequency Drivers

Our range of high frequency drivers are designed to encourage fully **FANE**-equipped cabinets. All CD compression units feature an ultra lightweight titanium diaphragm, driven at its circumference by an equally lightweight aluminium voice coil. Each motor system has a copper shorting ring surrounding the pole piece which effectively reduces eddy-current-induced distortions with the added benefit of increasing the very high-frequency output by reducing the inductive rise of the voice coil.

Our new series of FPT super-tweeters possess extraordinary sensitivity and, by fluid cooling the voice coil, increased power-handling over comparable conventional tweeter units with outstanding long-term reliability to provide the perfect solution in numerous audio applications.

FANE

CD 280



ELECTRO ACOUSTIC SPECIFICATIONS

Sound Channel / Throat Size	2" / 50.8 mm
Nominal Impedance	8 Ω
Power Handling (Watts AES)	80 W
Average Sensitivity 1W / 1m	108 dB
Usable Frequency Range (kHz)	800 Hz - 18 kHz
Recommended Crossover Frequency	1.6 kHz
Filtered at 18dB / octave	
Effective Diaphragm Diameter	2.87" / 73 mm
Voice Coil Diameter	2.87" / 73 mm
Voice Coil DC Resistance	6.2 / 10.5 Ω
Max Diaphragm Displacement	0.032" / 0.8 mm
Flux Density	1.70 Tesla
Magnet Weight	60 oz / 1.72 kg

MATERIALS OF CONSTRUCTION

Coil Former	Nomex
Voice Coil Material	Aluminium
Diaphragm Material	Titanium
Surround / Edge Termination	Double Sinusoidal Roll
	Titanium
Magnet Material	Ferrite
Connectors	Push Button Spring
	Terminals
Polarity	Positive voltage at red/ positive terminal causes positive pressure at throat exit

MOUNTING / SHIPPING INFORMATION

Overall Diameter	6.7" / 170 mm	Shipping Weight	11.4 lb / 5.2 kg
Depth	2.8" / 71 mm	Packing Carton Dimensions	200 x 210 x 100 mm
Weight	10.6 lb / 4.84 kg	Bolt Fixing Hole Dimensions and Qty	4 x M6 on 101.6 mm - 4" PCD

CD 150N



ELECTRO ACOUSTIC SPECIFICATIONS

Sound Channel / Throat Size	1" / 25.4 mm
Nominal Impedance	8 / 16 Ω
Power Handling (Watts AES)	50 W
Average Sensitivity 1W / 1m	110 dB
Usable Frequency Range (kHz)	2 kHz - 18 kHz
Recommended Crossover Frequency	3.5 kHz
Filtered at 18dB / octave	
Effective Diaphragm Diameter	1.75" / 44 mm
Voice Coil Diameter	1.75" / 44 mm
Voice Coil DC Resistance	6.2 / 10.5 Ω
Max Diaphragm Displacement	0.016" / 0.4 mm
Flux Density	1.90 Tesla
Magnet Weight	11 oz / 0.32 kg

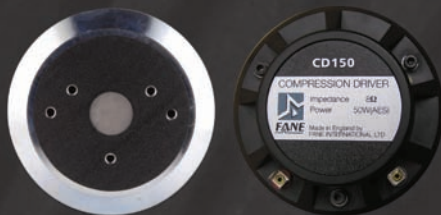
MATERIALS OF CONSTRUCTION

Coil Former	Polyamide
Voice Coil Material	Aluminium
Diaphragm Material	Titanium
Surround / Edge Termination	Double Sinusoidal Roll
	Titanium
Magnet Material	Neodymium
Connectors	6.3mm Spade
Polarity	Positive voltage at red/ positive terminal causes positive pressure at throat exit

MOUNTING / SHIPPING INFORMATION

Overall Diameter	4.17" / 106 mm	Shipping Weight	3.8 lb / 1.75 kg
Depth	2.16" / 55 mm	Packing Carton Dimensions	150 x 160 x 80 mm
Weight	3.6 lb / 1.65 kg	Bolt Fixing Hole Dimensions and Qty	2 x M6 on 76.2 mm - 3" PCD

CD 150



ELECTRO ACOUSTIC SPECIFICATIONS

Sound Channel / Throat Size	1" / 25.4 mm
Nominal Impedance	8 / 16 Ω
Power Handling (Watts AES)	50 W
Average Sensitivity 1W / 1m	108 dB
Usable Frequency Range (kHz)	2 kHz - 18 kHz
Recommended Crossover Frequency	3.5 kHz
Filtered at 18dB / octave	
Effective Diaphragm Diameter	1.75" / 44 mm
Voice Coil Diameter	1.75" / 44 mm
Voice Coil DC Resistance	6.2 / 10.5 Ω
Max Diaphragm Displacement	0.016" / 0.4 mm
Flux Density	1.65 Tesla
Magnet Weight	39 oz / 1.10 kg

MATERIALS OF CONSTRUCTION

Coil Former	Polyamide
Voice Coil Material	Aluminium
Diaphragm Material	Titanium
Surround / Edge Termination	Double Sinusoidal Roll
	Titanium
Magnet Material	Ferrite
Connectors	4.8mm Spade
Polarity	Positive voltage at red/ positive terminal causes positive pressure at throat exit

MOUNTING / SHIPPING INFORMATION

Overall Diameter	5.27" / 134 mm	Shipping Weight	6.8 lb / 3.1 kg
Depth	2.48" / 63 mm	Packing Carton Dimensions	150 x 160 x 180 mm
Weight	6.5 lb / 2.97 kg	Bolt Fixing Hole Dimensions and Qty	2 x M6 on 76.2 mm - 3" PCD

CD 145



ELECTRO ACOUSTIC SPECIFICATIONS

Sound Channel / Throat Size	1" / 25.4 mm
Nominal Impedance	8 / 16 Ω
Power Handling (Watts AES)	45 W
Average Sensitivity 1W / 1m	108 dB
Usable Frequency Range (kHz)	2 kHz - 18 kHz
Recommended Crossover Frequency	3.5 kHz
Filtered at 18dB / octave	
Effective Diaphragm Diameter	1.75" / 44 mm
Voice Coil Diameter	1.75" / 44 mm
Voice Coil DC Resistance	6.2 / 10.5 Ω
Max Diaphragm Displacement	0.016" / 0.4 mm
Flux Density	1.60 Tesla
Magnet Weight	23 oz / 0.67 kg

MATERIALS OF CONSTRUCTION

Coil Former	Polyamide
Voice Coil Material	Aluminium
Diaphragm Material	Titanium
Surround / Edge Termination	Double Sinusoidal Roll
	Titanium
Magnet Material	Ferrite
Connectors	6.3mm Spade
Polarity	Positive voltage at red/ positive terminal causes positive pressure at throat exit

MOUNTING / SHIPPING INFORMATION

Overall Diameter	4.5" / 115 mm	Shipping Weight	4.4 lb / 2 kg
Depth	2" / 53 mm	Packing Carton Dimensions	150 x 160 x 180 mm
Weight	4.2 lb / 1.92 kg	Bolt Fixing Hole Dimensions and Qty	2 x M6 on 76.2 mm - 3" PCD

CD 140H



ELECTRO ACOUSTIC SPECIFICATIONS

Sound Channel / Throat Size	1" / 25.4 mm
Nominal Impedance	8 / 16 Ω
Power Handling (Watts AES)	40 W
Average Sensitivity 1W / 1m	105 dB
Usable Frequency Range (kHz)	2 kHz - 16 kHz
Recommended Crossover Frequency	3.5 kHz
Filtered at 18dB / octave	
Effective Diaphragm Diameter	1.75" / 44 mm
Voice Coil Diameter	1.75" / 44 mm
Voice Coil DC Resistance	6.2 / 10.5 Ω
Max Diaphragm Displacement	0.016" / 0.4 mm
Flux Density	1.35 Tesla
Magnet Weight	16 oz / 0.46 kg

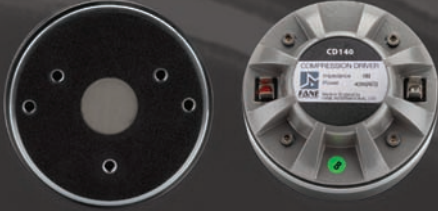
MATERIALS OF CONSTRUCTION

Coil Former	Polyamide
Voice Coil Material	Aluminium
Diaphragm Material	Titanium
Surround / Edge Termination	Double Sinusoidal Roll
	Titanium
Magnet Material	Ferrite
Connectors	6.3mm Spade
Polarity	Positive voltage at red/ positive terminal causes positive pressure at throat exit

MOUNTING / SHIPPING INFORMATION

Overall Diameter	4" / 102 mm	Shipping Weight	3.6 lb / 1.64 kg
Depth	1.97" / 51 mm	Packing Carton Dimensions	120 x 120 x 160 mm
Weight	3.4 lb / 1.54 kg	Bolt Fixing Hole Dimensions and Qty	N/A

CD 140



ELECTRO ACOUSTIC SPECIFICATIONS

Sound Channel / Throat Size	1" / 25.4 mm
Nominal Impedance	8 / 16 Ω
Power Handling (Watts AES)	40 W
Average Sensitivity 1W / 1m	105 dB
Usable Frequency Range (kHz)	2 kHz - 16 kHz
Recommended Crossover Frequency	3.5 kHz
Filtered at 18dB / octave	
Effective Diaphragm Diameter	1.75" / 44 mm
Voice Coil Diameter	1.75" / 44 mm
Voice Coil DC Resistance	6.2 / 10.5 Ω
Max Diaphragm Displacement	0.016" / 0.4 mm
Flux Density	1.35 Tesla
Magnet Weight	16 oz / 0.46 kg

MATERIALS OF CONSTRUCTION

Coil Former	Polyamide
Voice Coil Material	Aluminium
Diaphragm Material	Titanium
Surround / Edge Termination	Double Sinusoidal Roll
	Titanium
Magnet Material	Ferrite
Connectors	6.3mm Spade
Polarity	Positive voltage at red/positive terminal causes positive pressure at throat exit

MOUNTING / SHIPPING INFORMATION

Overall Diameter	4" / 102 mm	Shipping Weight	3.6 lb / 1.64 kg
Depth	1.97" / 51 mm	Packing Carton Dimensions	120 x 120 x 160 mm
Weight	3.4 lb / 1.54 kg	Bolt Fixing Hole Dimensions and Qty	3 x M6 on 57.15 mm - 2.25" PCD

CD 125



ELECTRO ACOUSTIC SPECIFICATIONS

Sound Channel / Throat Size	1" / 25.4 mm
Nominal Impedance	8 Ω
Power Handling (Watts AES)	25 W
Average Sensitivity 1W / 1m	104 dB
Usable Frequency Range (kHz)	1.2 kHz - 8 kHz
Recommended Crossover Frequency	1.2 kHz
Filtered at 18dB / octave	
Effective Diaphragm Diameter	1.375" / 34.4 mm
Voice Coil Diameter	1.375" / 34.4 mm
Voice Coil DC Resistance	N/A
Max Diaphragm Displacement	N/A
Flux Density	1.25 Tesla
Magnet Weight	10 oz / 0.28 kg

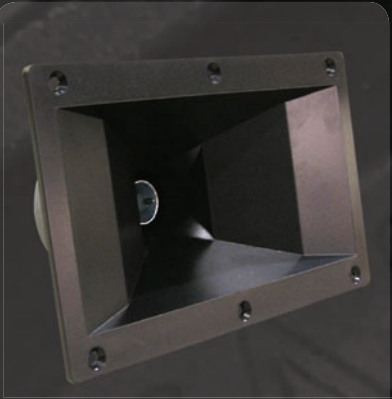
MATERIALS OF CONSTRUCTION

Coil Former	Kapton
Voice Coil Material	Copper
Diaphragm Material	Titanium
Surround / Edge Termination	Double Sinusoidal Roll
	Titanium
Magnet Material	Ferrite
Connectors	6.3mm Spade
Polarity	Positive voltage at red/ positive terminal causes positive pressure at throat exit

MOUNTING / SHIPPING INFORMATION

Overall Diameter	3.54" / 90 mm	Shipping Weight	2.16 lb / 0.98 kg
Depth	1.73" / 44 mm	Packing Carton Dimensions	100 x 100 x 75 mm
Weight	2 lb / 0.91 kg	Bolt Fixing Hole Dimensions and Qty	N/A

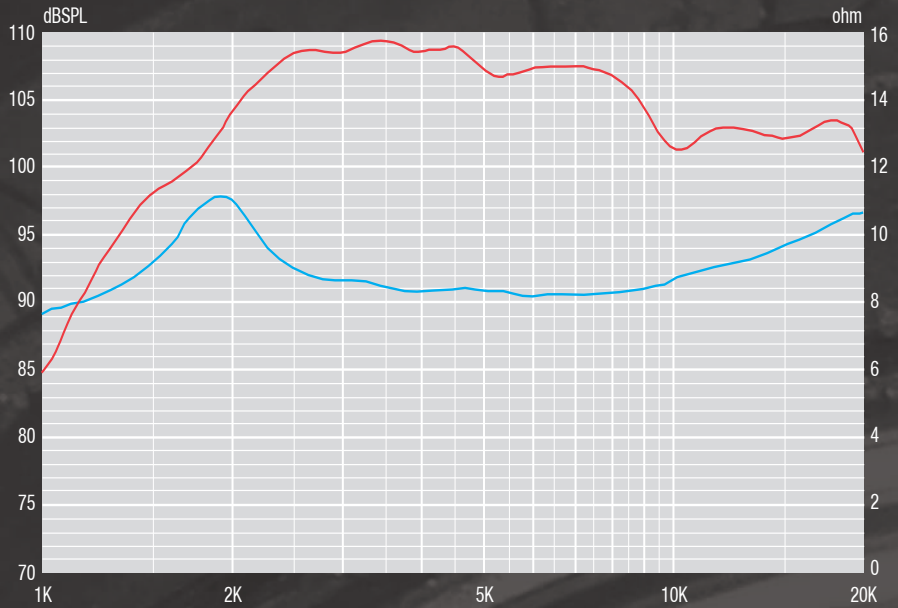
FPT 150 SUPERTWEETER



HORN SPECIFICATIONS

Dispersion	100 x 50
Dimensions	7.5" x 4.5" / 191 mm x 114 mm
Cut-out	6.7" x 3.4" / 170 mm x 86 mm
Depth	4.5" / 114.3 mm
Weight	2lb / 909 g

Horn used on
FPT50 Driver



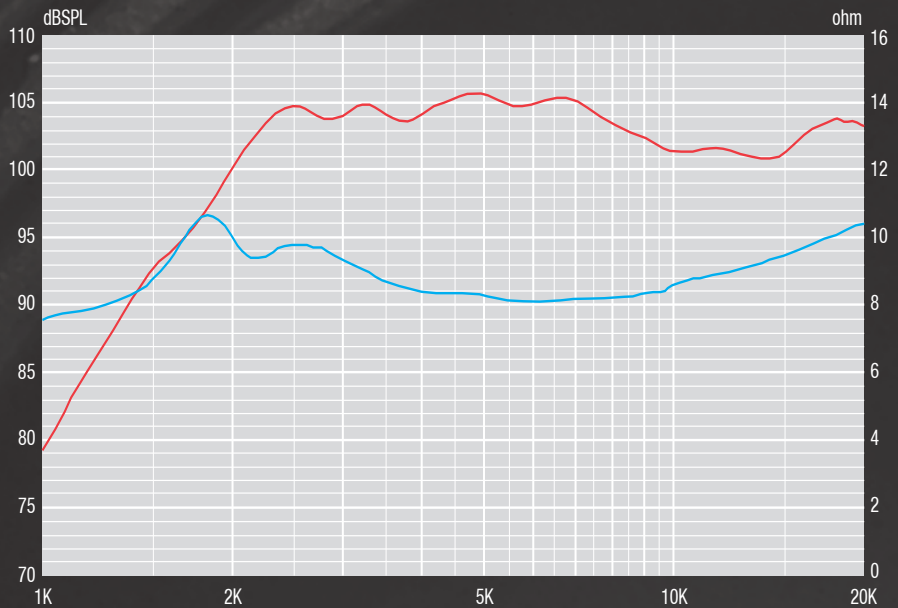
FPT 80 SUPERTWEETER



HORN SPECIFICATIONS

Dispersion	80° Conical
Dimensions	3.4" x 3.4" / 87 mm x 87 mm
Cut-out	3.15" / 80 mm
Depth	2.9" / 73.6 mm
Weight	1.6 lb / 727 g

Horn used on
FPT50 Driver



FPT 50



APPLICATION NOTES:

Designed for use with the FPT150 and FPT80 Supertweeters.

Use with APT3 adaptor for 1 3/8" NEF ext.

ELECTRO ACOUSTIC SPECIFICATIONS

Sound Channel / Throat Size	1" / 25.4 mm
Nominal Impedance	8 Ω
Power Handling (Watts AES)	45 W / 85 Wrms
Average Sensitivity 1W / 1m	105 dB
Usable Frequency Range (kHz)	3.5 Hz - 20 kHz
Recommended Crossover Frequency	3.5 kHz
Filtered at 18dB / octave	
Effective Diaphragm Diameter	N/A
Voice Coil Diameter	1" / 25.4 mm
Voice Coil DC Resistance	N/A
Max Diaphragm Displacement	N/A
Flux Density	N/A
Magnet Weight	7.75 oz / 0.22 kg

MATERIALS OF CONSTRUCTION

Coil Former	N/A
Voice Coil Material	N/A
Diaphragm Material	Phenolic
Surround / Edge Termination	N/A
Magnet Material	Ferrite
Connectors	N/A
Polarity	A negative voltage at the red terminal causes a positive pressure at the output of the device

MOUNTING / SHIPPING INFORMATION

Overall Diameter	2.75" / 70 mm	Shipping Weight	N/A
Depth	1.57" / 40 mm	Packing Carton Dimensions	N/A
Weight	1.5 lb / 0.68 kg	Bolt Fixing Hole Dimensions and Qty	N/A