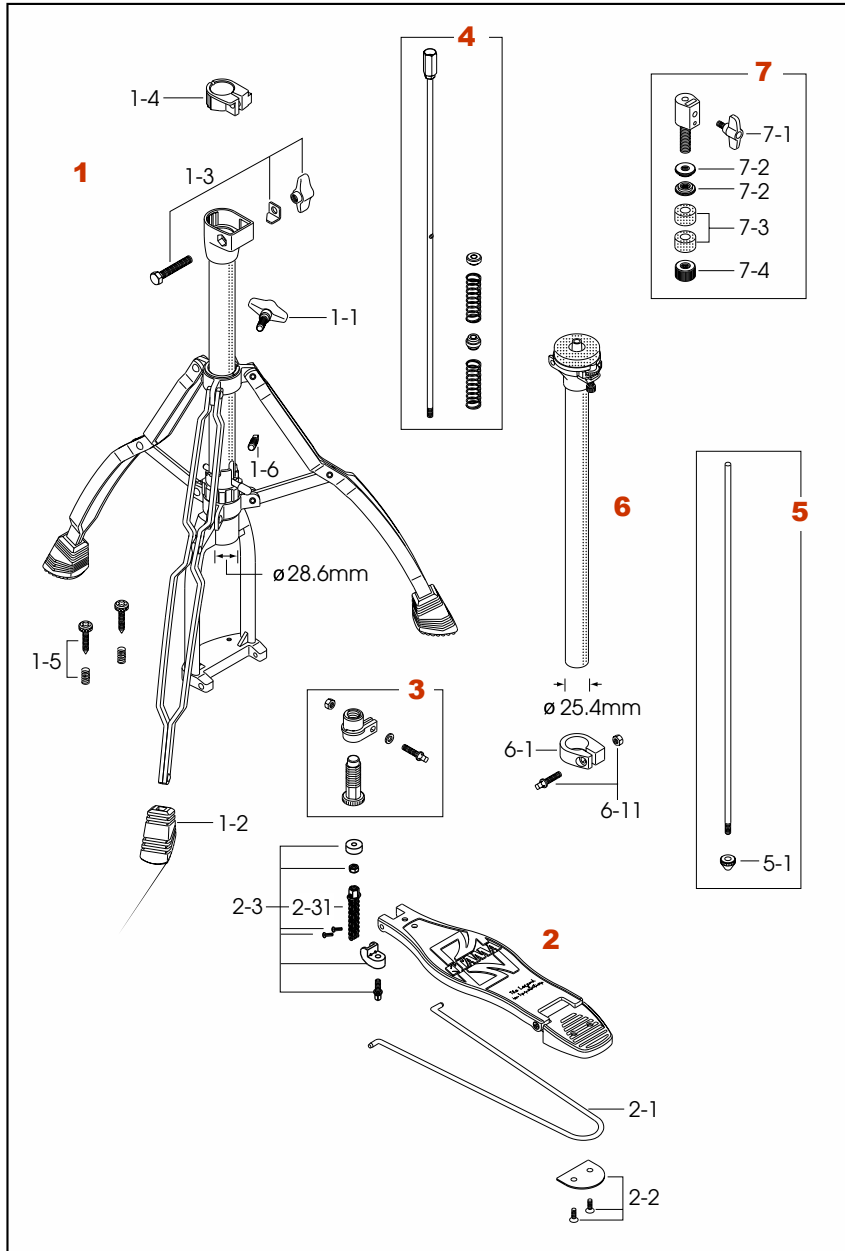


# HH75W ROADPRO HI-HAT STAND



- |                  |                                                        |
|------------------|--------------------------------------------------------|
| <b>1 HH75W-1</b> | <b>Base assembly</b>                                   |
| 1-1              | TS816P T-bolt (M8 x 1.6L, 2pcs/pack)                   |
| 1-2              | RF-WP3 Rubber tip (3pcs/pack)                          |
| 1-3              | HB850WN8L Bolt(M8 x 50L), L-plate, & nut assembly      |
| 1-4              | NB2825 Nylon bushing(28.6mm-25.4mm)                    |
| 1-5              | 71145P Screw anchor w/spring                           |
| 1-6              | S812SH Square head bolt (M8x12L)                       |
| <b>2 HH75W-2</b> | <b>Footboard assembly</b>                              |
| 2-1              | HS35-21 Radius rod only                                |
| 2-2              | HP20-83 Rod cover w/screws                             |
| 2-3              | HH75W-23 Chain assembly w/screw,nuts, & rubber stopper |
| 2-31             | HH75W231 Chain assembly                                |
| <b>3 HH75W-3</b> | <b>Height adjustment assembly</b>                      |
| <b>4 HH75W-4</b> | <b>Lower pull rod &amp; spring assembly</b>            |
| <b>5 HH905-3</b> | <b>Upper pull rod w/hex nut (M6)</b>                   |
| 5-1              | HH905-31 Plastic nut                                   |
| <b>6 HH75W-5</b> | <b>Upper tube assembly w/key lock</b>                  |
| 6-1              | ML254N Key lock (25.4mm)                               |
| 6-11             | MS625SHNW Square head bolt (M6 x 25L) w/nut            |
| <b>7 CL08*</b>   | <b>Hi-hat clutch</b>                                   |
| 7-1              | TS610 T-bolt (M6 x 10L)                                |
| 7-2              | CL08-12 Lock nut                                       |
| 7-3              | CL08-13P Felt washer (2pcs/pack)                       |
| 7-4              | CL08-14 Non-loose metal nut                            |

\*CL08 does not fit HH15-3(Rod for HH25W and HH15R).