



Miniature loudspeaker for applications which require a good sounding system with a low profile. The powerful 4" wide-range cone driver is capable of delivering undistorted SPL of up to 113 dB (1 W / 1 m). Flexible mounting options and the standard flying bracket make the i4 system an universal tool for near-field applications.

## PRODUCT SPECIFICATIONS

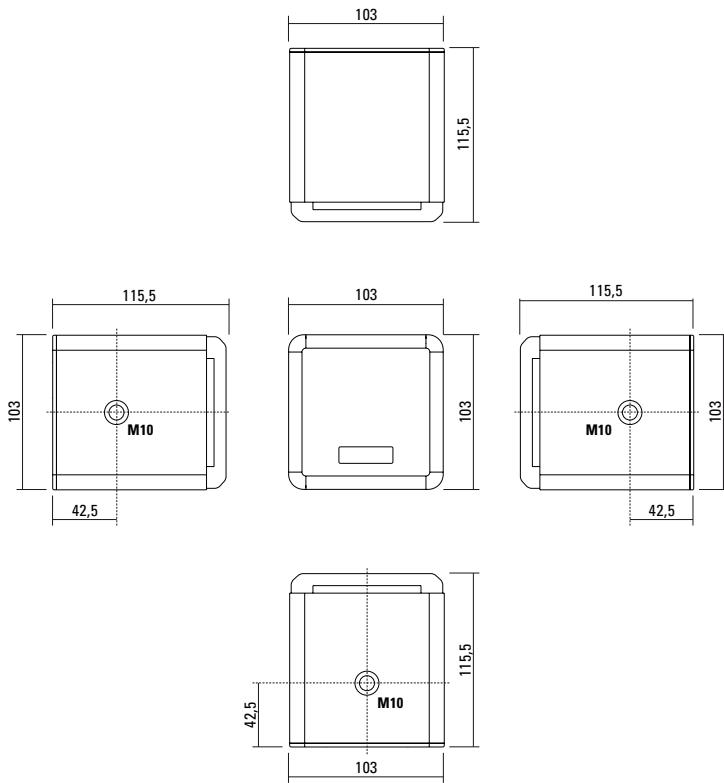
<b>Speaker Components</b>	4" wideband
<b>Description</b>	Multi Media Sound System
<b>Power</b> AES / Peak	100 W / 300 W
<b>Impedance</b> nominal	16 Ω
<b>SPL</b> 1 W / Peak @ 1 m	91 dB / 113 dB
<b>Usable Range</b> - 6 dB	150 Hz - 16 kHz
<b>Coverage</b> horizontal / vertical	80° - conical
<b>Max. Splay Angle</b>	---
<b>Connectors</b>	2 x Neutrik Speakon NL4MP in/out Coding: 1 +/- HiMid, 2 +/- loop thru 1 x Phoenix
<b>Handles</b>	---
<b>Rigging / Fittings</b>	3 x M10 / 1 x M6
<b>Weight</b>	1,6 kg
<b>Size</b> height x width x depth	10,3 x 10,3 x 11,6 cm
<b>Order No.</b>	<b>00150/black</b> <b>00150/white</b> (RAL 9010)



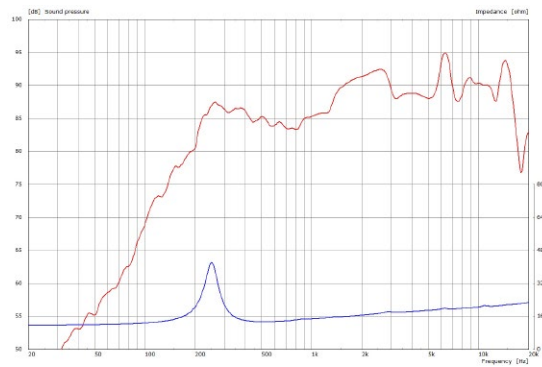
Ultra compact.



## DIMENSIONS

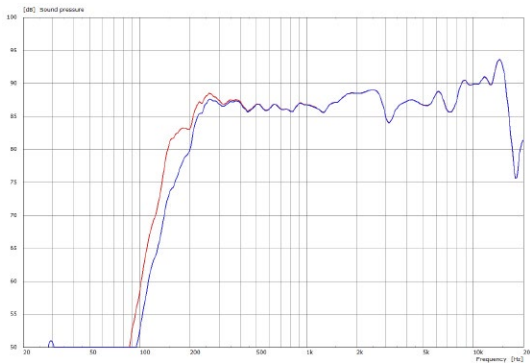


### Sensitivity 1 W @ 1 m + Impedance

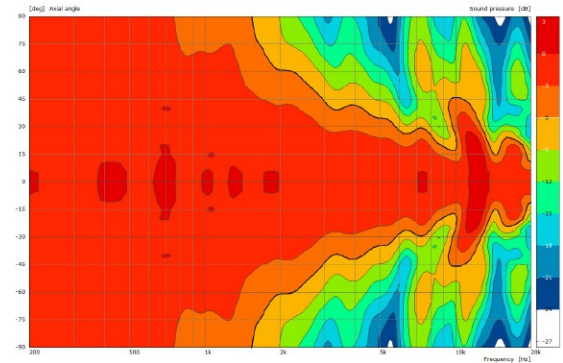


## MEASUREMENTS

### Frequency Response with Presets



### 2D Directivity Plot - radial



## ACCESSORIES i4

### Flying Bracket



for i4,  
incl. socket screws,  
2 x M10 x 20 mm

Order No. **01203**

### Knurled Screw



for i4,  
M10 x 20 mm

Order No. **73750**

### Phoenix Connector



2 pol      Order No. **08257**

4 pol      Order No. **08256**

### Flight Case



for 4 pcs. i4,  
with mounted flying brackets 01203,  
heavy duty, 7,0 mm birch multiplex,  
partition walls, 2 x recessed sprung  
handles, 1 x medium butterfly catches,  
rubber feet, interior lined with felt.

Size (H x W x D): 20,0 x 31,0 x 27,0 cm

Order No. **16450**

### Flight Case



for 8 pcs. i4,  
with mounted flying brackets 01203,  
heavy duty, 7,0 mm birch multiplex,  
partition walls, 2 x recessed sprung  
handles, 2 x medium butterfly catches,  
interior lined with felt.

Order No. **16452**



Various connection options.