



High-performance line array systems for optimised speech and music reproduction in acoustically challenging rooms. The precise, broadband sound bundling to a nominal 20° vertical dispersion is achieved through the acoustic coupling of two slightly curved line arrays, arranged one behind the other within the cabinet. This innovative arrangement is complemented by the horn guide in the high frequency range to ensure an exceptionally homogeneous and symmetrical 100° horizontal dispersion. The GL 24 system is particularly suitable for individual applications up to a distance of 25 metres, and can also be used as a downfill under the GL 16i. In the standard version, the GL 24 is a 2-way active system with separate amplifiers and controller. The xov-version includes a passive crossover, and can be operated with a single amplifier channel.

**PRODUCT SPECIFICATIONS**

	<b>GL 24 a</b>	<b>GL 24 xov</b>
<b>Speaker Components</b>	6 x 6,5" Nd / 24 x 1" Nd Tweeter	6 x 6,5" Nd / 24 x 1" Nd Tweeter
<b>Description</b>	Cylindric Wave Radiator	Cylindric Wave Radiator
<b>Power</b> <small>AES / Peak</small>	LF: 600 W / 1800 W HF: 225 W / 675 W	600 W / 1800 W
<b>Impedance</b> <small>nominal</small>	5,3 Ω / 5,3 Ω	5,3 Ω
<b>SPL</b> <small>1 W / Peak @ 1 m</small>	LF: > 98 dB / 130 dB HF: > 99 / 127 dB	> 130 dB
<b>Usable Range</b>	80 Hz - 20 kHz (-6 dB)	80 Hz - 20 kHz (-6 dB)
<b>Tuning Frequency</b> <small>excursion minimum</small>	90 Hz	90 Hz
<b>X - Overpoint</b> <small>acoustical</small>	Depends on preset	1,1 kHz
<b>Coverage</b> <small>horizontal / vertical</small>	100° x 20°	100° x 20°
<b>Mechanical Splay Angle</b>	13°	13°
<b>Connectors</b>	2 x Neutrik Speakon NL4MP in/out Coding: 1 +/- HF, 2 +/- LF	2 x Neutrik Speakon NL4MP in/out Coding: 1 +/- HiMid, 2 +/- loop thru
<b>Handles</b>	2 x	2 x
<b>Rigging / Fittings</b>	9 x M10 35 mm pole mount	9 x M10 35 mm pole mount
<b>Weight</b>	20,5 kg	21,0 kg
<b>Size</b> <small>height x width x depth</small>	106,0 x 19,0 x 34,3 (24,5) cm	106,0 x 19,0 x 34,3 (24,5) cm
<b>Order No.</b>	<b>00520/a</b>	<b>00520/xov</b>



GL 24 horn.

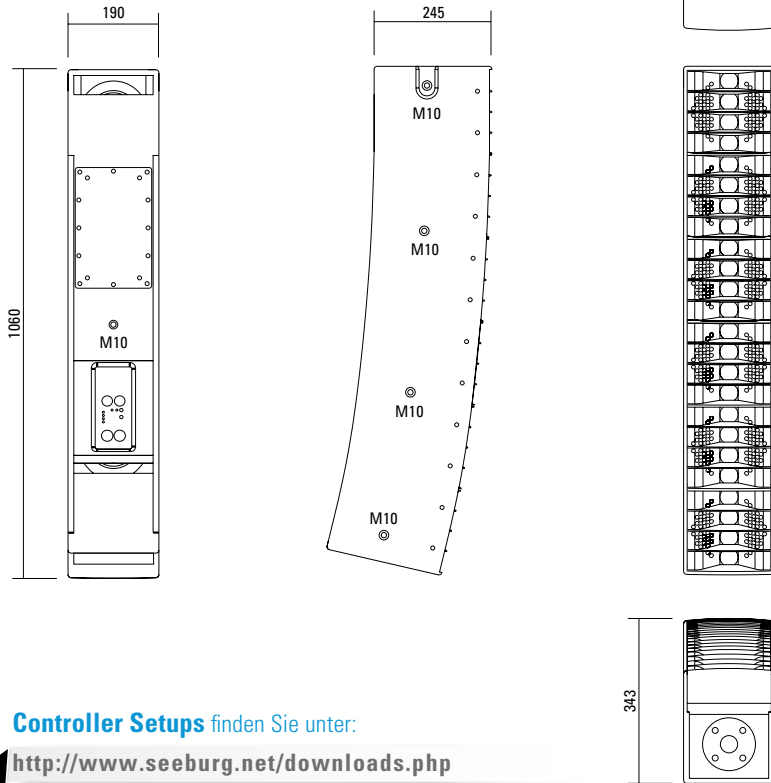


Flying bracket.



Integrated fittings for easy connection.

## DIMENSIONS



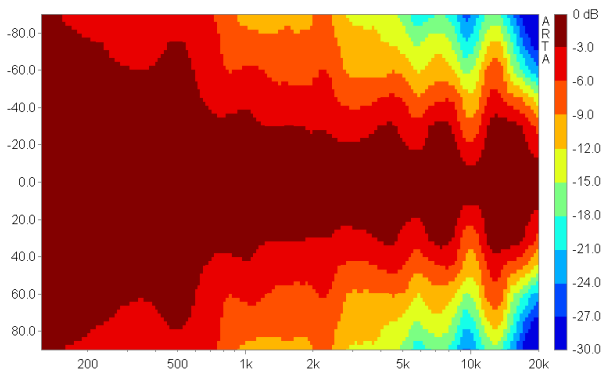
Controller Setups finden Sie unter:

<http://www.seeburg.net/downloads.php>

## COVERAGE PATTERNS

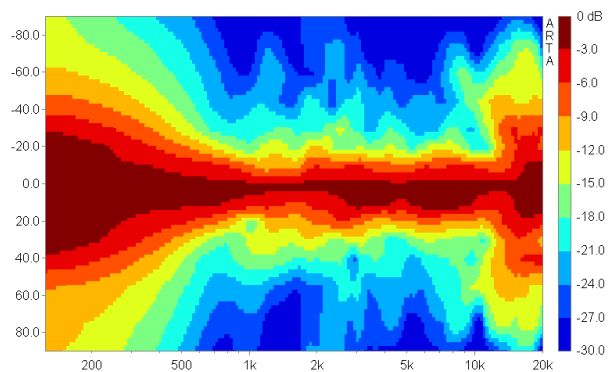
### GL 24 horizontal - 2D Directivity Plot

100° horizontal dispersion for good performance in wide venues.

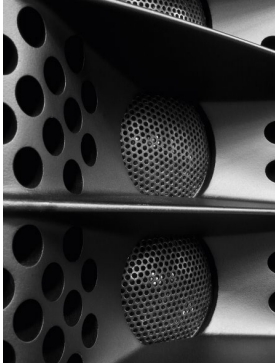


### GL 24 vertikal - 2D Directivity Plot

The j-curving leads to an unsymmetrical vertical dispersion, narrower in the upper section for long throw and wider in the lower section for near field.



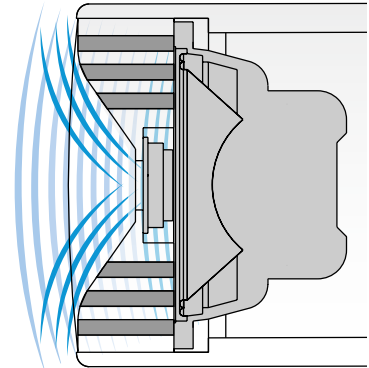
## AMR® PRINCIPLE



### AMR® PRINCIPLE

The horn for the 1" driver (1" tweeter) contains integrated channels which pass through the sound waves of the low-mid speakers behind it. These channels are sealed in the frequency range of the HF driver due to the air mass inside the channels acting as a reflector (AMR = Air Mass Reflection).

The low-mid speakers operate on an acoustical band pass with a center frequency close to the crossover frequency, leading to a smooth horizontal dispersion over a wide frequency range. Another asset is the extremely compact construction of this design.



## APPLICATIONS



Flying cradle.



Integrated 35 mm pole mount.



Flying bracket.



**GL 24 / G Sub 1501**  
For applications up to 25 m distance.



**GL 16i / GL 24 / G Sub**  
For applications up to 40 m distance.



**2 x GL 16i / GL 24**  
For applications up to 80 m distance.

**Flying Cradle**



for one unit GL 24 or  
for up to 6 units GL 16  
Order No. **01354**

**Doughty Trigger Clamp**



for flying brackets,  
SWL 200 kg  
Order No. **01222**

**Flying Bracket**



for GL 24  
incl. accessories:  
4 x M10 x 20 handle screws  
Order No. **01352/GL24/set**

**Ring Screw**



M10– DIN 580,  
black zinced  
Order No. **73700**

**Handle Screw**



for flying brackets, adjustable,  
M10 x 20  
Order No. **08375/20**

**TV Spigot**



10 mm internal thread,  
28 mm Ø  
Order No. **08128**

**Flange**



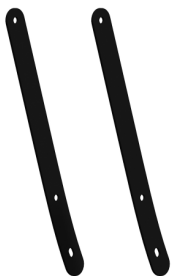
balanced, 2 x M10, 35 mm Ø,  
for up to 2 x GL speakers and  
flying bracket  
Order No. **08126/bal**

**Flange**



M20 x 35 mm– for flying bracket  
G3, GL 16, GL 24, K 24  
Order No. **08127/nut**

**Connection Bar**



GL 24 → GL 8c for Downfill,  
a pair, incl. accessories  
Order No. **08159**

## ACCESSORIES GL 24

### Wall Mount



for one single GL 16 / GL 24 /  
A 2 / A 3 / L-Series  
Order No. **03034**

### Spacer



for wall mount (03034)  
polyurea coated  
Order No. **03034/spc**

### Wall Mount



for U-brackets, 40 kg max., incl. screws  
(M10 x 70 mm socket head screw,  
M10 hex lock nut and flat washer)  
for 15" speakers  
Order No. **08130/F/400**

### Speaker Stand



Incl. wind up, 50 kg max.,  
height 129 to 204 cm, K&M  
Order No. **03011**  
  
50 kg max., K&M  
Order No. **03010**

### Bag



for one unit GL 24  
Order No. **01233**

### Rain Cover



for GL 24  
Order No. **01233/outdoor**

### Stretch Cover



for GL 24 / GL 24 j  
Order No. **01233**

### Flight Case



for 2 units GL 24 / GL 24 j,  
inserts for accessories, compact size,  
heavy duty version, PVC coated,  
100 mm blue wheels  
Order No. **16013/pro/T**

