

PDN.1852 | SUB BASS DRIVER



18" / 460 mm
NOMINAL DIAMETER

1000 W (A.E.S.)
POWER HANDLING

98 dB
SENSITIVITY

35 Hz - 2 kHz
FREQUENCY RESPONSE

5.0" / 127 mm
VOICE COIL DIAMETER

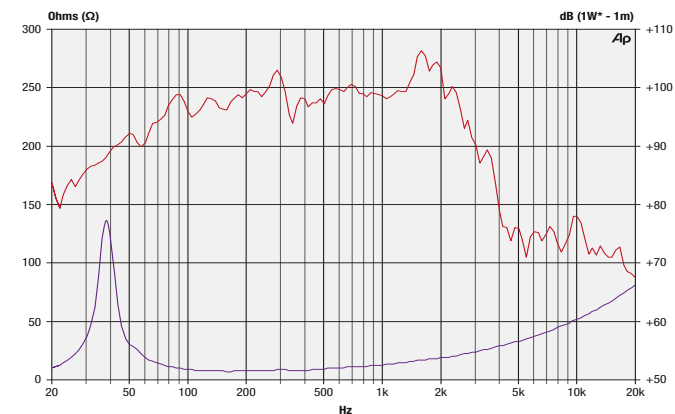
12 mm Xmax



PRODUCT FEATURES

- ▶ Lightweight neodymium motor system.
- ▶ Heavy duty cast aluminium frame for increased rigidity.
- ▶ Aggressive bass response.
- ▶ A B/L in excess of 30 T/m for fast accurate lows.
- ▶ Warm tonal sound.
- ▶ Appropriate for applications as diverse as scoop bins, conventional reflex cabinets and horn loaded systems.

FREQUENCY RESPONSE AND IMPEDANCE CURVE



*2.83V. Half space response measured in a 975 Litre sealed Enclosure.

SPECIFICATIONS

Nominal Diameter	18" / 460 mm
Voice Coil Diameter	5.0" / 127 mm
Available Impedances	4 Ohms / 8 Ohms / 16 Ohms
Power Rating	1000 W (A.E.S.)
Peak Power (6dB Crest Factor)	4000 W (A.E.S.)
Sensitivity (1w - 1m)	98 dB
Frequency Range	35 Hz - 2 kHz
Recommended Enclosure Volume	90 -220 Litres
Resonance	41.85 Hz
Voice Coil Winding Depth	29 mm / 1.14"
Magnet Gap Depth	12 mm / 0.47"
Flux Density	1.18 Tesla
Magnet Material	Neodymium
Voice Coil Material	Copper
Former Material	Glass Fibre
Dust Dome Material	Paper
Suspension Material	Dual silicone
Cone / Surround Material	Paper / HGBC

THIELE SMALL PARAMETERS (8 Ω MODEL)

Fs	41.85 Hz	Vas	120.38 Litres
Re	5.18 Ω	Mms	231.21 g
Qms	11.1	Sd	1164.16 cm ²
Qes	0.34	Cms	0.063 mm/N
Qts	0.33	BL	30.47 T/m
Le	0.9 mH	Xmax / Xlim (±)	12 mm / 22 mm
L2	1.83 mH	Vd	1.397 Litres
R2	5.41 Ω	Ref. Efficiency	2.34%

Power compression is the reduction of sensitivity at the specified power. Higher power ratings do not necessarily give a proportionate increase in SPL therefore the maximum SPL of the driver may significantly exceed that of other manufacturers with high power ratings. ** Distortion is measured at 10% of the rated power (AES Standard).

1. AES Standard (35 to 350 Hz)
2. AES Recommended Practice.
3. Thiele - Small Parameters follow a 1000 Watt preconditioning period.

Please note that frequency response measurements are supplied for comparison purposes only and are not a measure of the low frequency performance which may be achievable in a fully optimised system.

DIMENSIONS

Overall Diameter	474 mm
Width Across Flats	459 mm
Flange Height	14.5 mm
Depth (Excl. Flange)	185 mm
Magnet Diameter	166 mm

MOUNTING INFORMATION

Chassis Shoulder Diameter	414.5 mm
Outer Bolt Circle	6x M8 on 455 mm PCD
Inner Bolt Circle	N/A

WEIGHT

Nett Weight	11.5 Kg / 25.35 lb
Shipping Weight	12.9 Kg / 28.44 lb