



The self-powered high-performance top K 24 dp is suitable for all sound applications requiring a fast set-up, very high power reserves and a good sound. The 2 x 12"/ 1.4" combination weighs just 37 kg including the integrated flying hardware, can be hung one above the other for longer arrays and is extremely compact. The optional flying bracket is very simple to attach using the ball lock pin and can be adjusted to the desired angle. The high-quality low-noise two channel (bi-amp) DSP amplifier provides for a max. SPL of up to 140 dB.

## PRODUCT SPECIFICATIONS

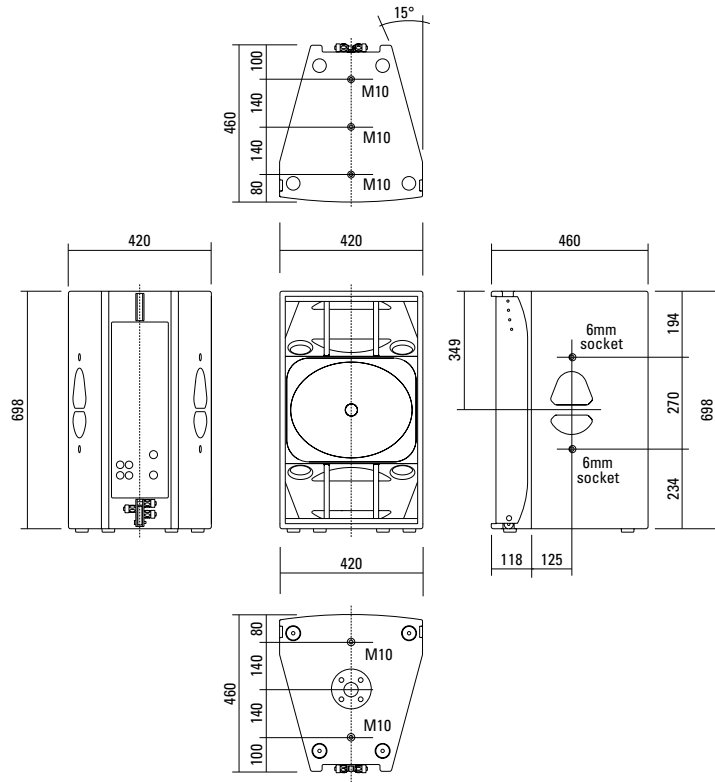
<b>Speaker Components</b>	2 x 12" Nd / 1,4" Nd
<b>Description</b>	High Power HiMid System
<b>Amp Power</b>	LF: 2400 W RMS / 110-230 V HF: 700 W RMS / 110-230 V
<b>Rated Current</b>	2,2 A @ 230 V
<b>SPL</b> <small>Peak @ 1 m</small>	140 dB
<b>Max. Input Signal</b>	25 dBu
<b>DSP</b>	HDLM FPGA Processing 32 bit floating point
<b>AD / DA</b>	24 bit / 96 kHz
<b>Latency</b>	0,8 ms (analog in to analog out)
<b>Usable Range</b> <small>- 6 dB</small>	75 Hz - 19 kHz
<b>Tuning Frequency</b> <small>excursion minimum</small>	85 Hz
<b>X - Overpoint</b> <small>acoustical</small>	Depends on preset
<b>Coverage</b> <small>horizontal / vertical</small>	60° x 50° (60°-version) 90° x 50° (90°-version)
<b>Max. Splay Angle</b>	12°
<b>Connectors</b>	Neutrik XLR in/out Neutrik PowerCon in/out
<b>Handles</b>	2 x
<b>Rigging / Fittings</b>	5 x M10 / 4 x 6 mm socket Integrated flying hardware 35 mm pole mount
<b>Weight</b>	37,0 kg (+ 7,0 kg wheel board)
<b>Size</b> <small>height x width x depth</small>	70,0 x 42,0 x 46,0 cm
<b>Order No.</b>	<b>01029/dp/60°</b> (60°-version) <b>01029/dp/90°</b> (90°-version)



Control panel of the K 24 dp.

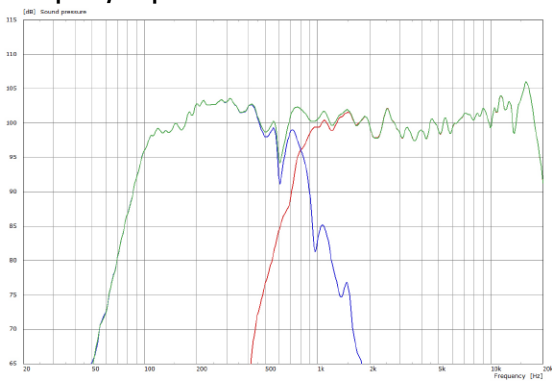


## DIMENSIONS

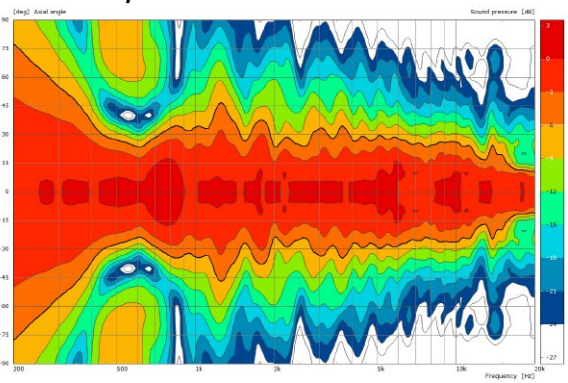


## MEASUREMENTS

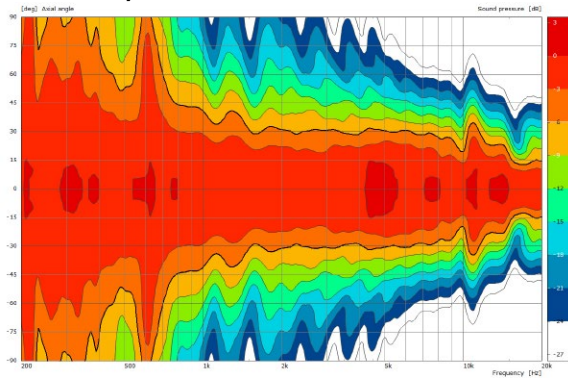
Frequency Response with Preset



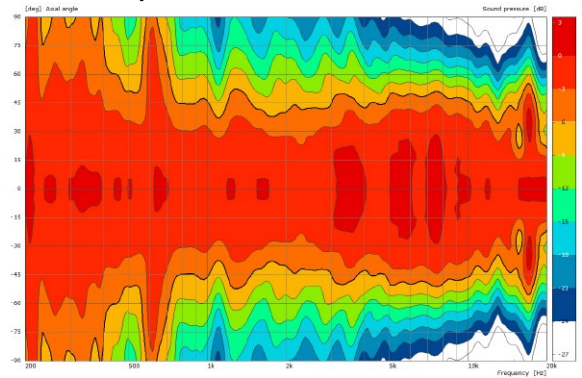
2D Directivity Plot - vertical



2D Directivity Plot - horizontal 60°



2D Directivity Plot - horizontal 90°



**The technical performance features of the K 24 and its exceptional compactness were only possible by means of a complex acoustic interplay between the individual components and their control systems.**

As a result, the performance characteristics and quality attributes were optimised to such a level that they are able to compete with and even surpass significantly larger systems.

To increase the degree of efficiency, the two 12" low-midrange speakers are initially directed into an acoustic bandpass and then into a hybrid horn. The symmetrical set-up ensures even and balanced coverage.

The generously dimensioned elliptical horn featuring a curved design for wide coverage ensures a highly accurate and long throw.

The cabinet is fitted with a sophisticated reinforcement system in order to prevent unwanted resonance.



K 24

The drivers are installed such that the voice coils are in the same vertical plane to ensure phase coherence even when using the passive crossover.



## APPLICATIONS



### The integrated flying system.



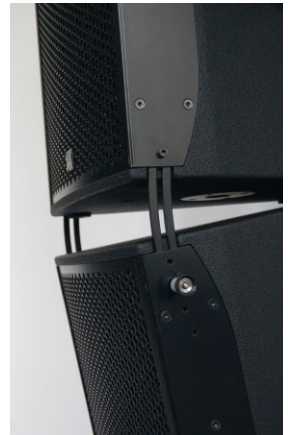
The flying cradle – up to three K 24 systems can be flown vertically.



Simple interconnection of systems by means of integrated spacer.



Spacer with "parking space" for the ball lock pin.



Integrated flying system with four adjustable splay angles.



Bracket.

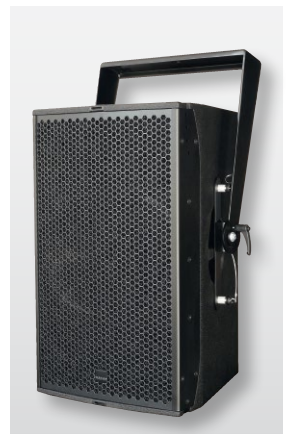


**K 24 as Stack**  
with G Sub.

### Accessories.



Removable wheel board for simple transportation.



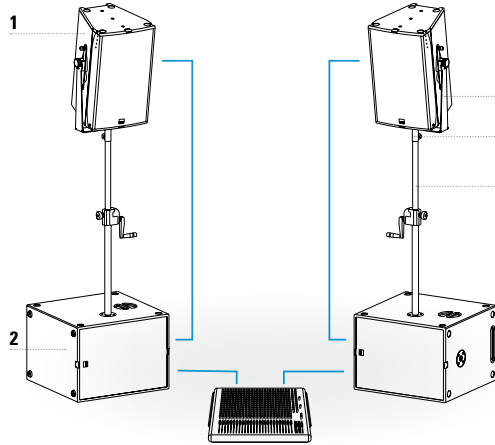
The flying bracket is very simple to attach using the ball lock pin and can be adjusted to the desired angle.



**The K 24 System.**

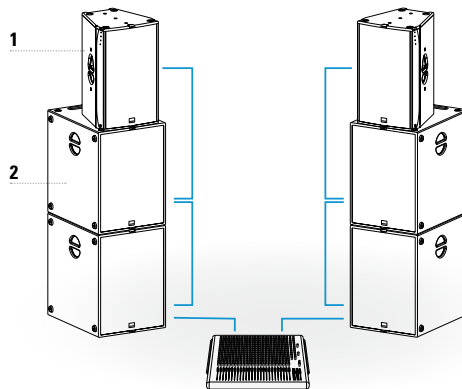
The K 24 dp not only performs well when used in the basic version, but can also be extended as desired to a larger system suitable for halls and open-air events.

Whether you opt for the G Sub dp 1500 (1 x 18") with its low tuning frequency, for the more punchy sounding B 1502 dp (2 x 15") or for the direct radiating K Sub 1801 (1 x 18") is more or less a matter of taste. The system can be used flown or ground stacked and is easily extendable.



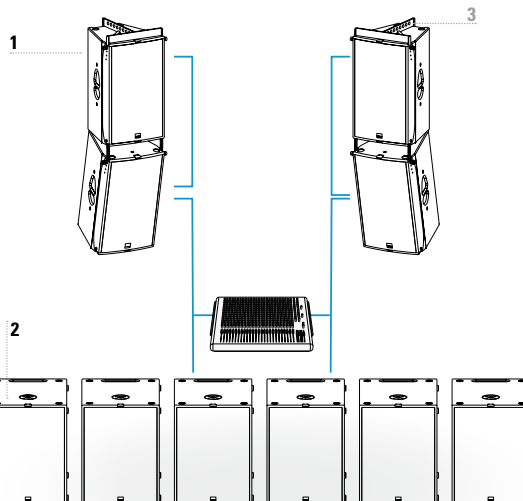
**Basic System**

Components		Order No.
1	2 x K 24 dp	01029/dp
2	2 x K Sub 1801 dp Selfpowered version	01060/dp
Accessories		Order No.
3	Flying Bracket	01209/set
4	Flange	08127
5	Speaker Pole	03022



**Standard System**

Components		Order No.
1	2 x K 24 dp	01029/dp
2	4 x K Sub 1801 dp Selfpowered version	01060/dp



**XL System**

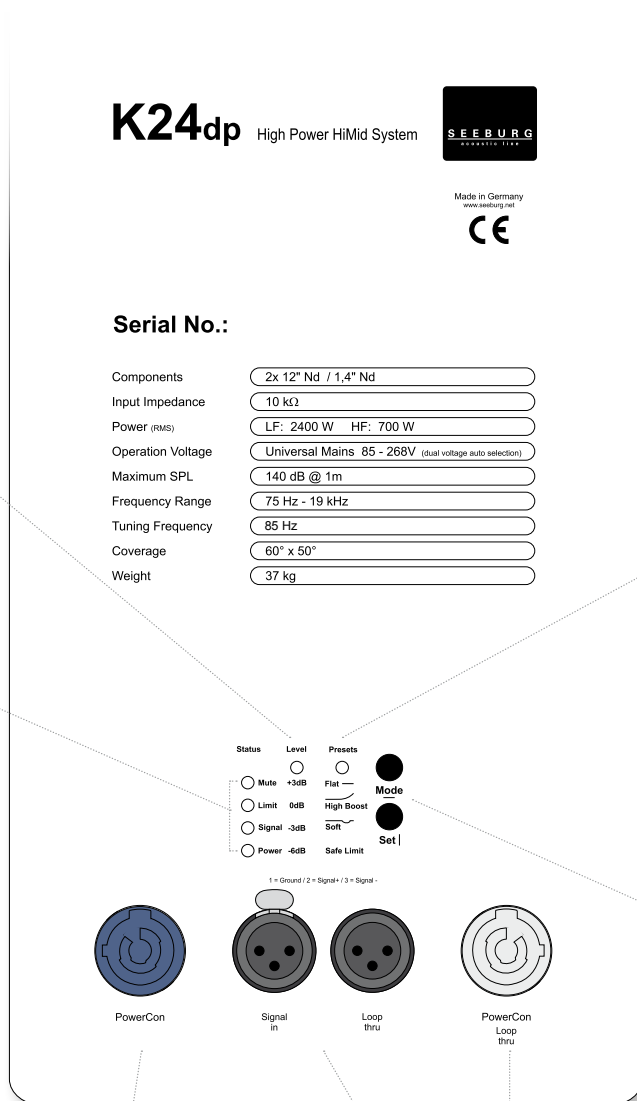
Components		Order No.
1	4 x K 24 dp	01029/dp
2	6 x K Sub 1801 dp Selfpowered version	01060/dp
Accessories		Order No.
3	2 x Flying Cradle	01355

**The K 24 dp features integrated digital amplifier electronics with a DSP controller. Various factory-configured presets and volume settings can be selected.**

High-grade electronic components from the industrial sector and a first-class circuit design ensure excellent audio quality

with low distortion and a minimal noise floor.

Highly efficient and "intelligent" limiter systems ensure optimum protection against overload, without restricting the possibilities offered by this high-performance sound system.



**PowerCon (blue)**  
Power supply  
~ 110-230 V / 16 A max.

**XLR**  
Symmetrical analog input  
max. Input +25 dBu.  
Effective filter protection against HF interference and DC Voltages.  
Electronically balanced to prevent noise.

**PowerCon (grey)**  
~ 110-230 V / 16 A max.  
loop through connector.

**Flying Cradle**



for K 24 incl. accessories  
(3 x ball lock pin, 3 x steel rope)  
Order No. **01355**

**Flying Bracket**



for K 24 incl. accessories  
(4 x ball lock pin, 4 x steel rope  
2 x handle screw M8 x 20 mm)  
Order No. **01209/set**

**Handle Screw**



for K 24, adjustable,  
M8 x 20 mm  
Order No. **08376**

**Ball Lock Pin**



for K 24 (front), 6 x 18 mm  
Order No. **01380/K24/grip 18 mm**  
for K 24 (rear), 6 x 25 mm  
Order No. **01380/K24/grip 25 mm**

**Flange**



M20 x 35 mm– for flying bracket  
G3, GL 16, GL 24, K 24  
Order No. **08127/nut**

**Horn 90° x 50°**



for K 24, 90° x 50°  
Order No. **01598**

**Shackle**



heavy duty with safety device,  
WLL 500 kg  
Order No. **01372/500 kg**

**Doughty Trigger Clamp**



for flying brackets,  
SWL 200 kg  
Order No. **01222**

**Steel Safety Cable**



4 mm - 50 cm  
Order No. **01376**

**Ring Screw**



M10– DIN 580,  
black zincd  
Order No. **73700**

**Hybrid Cable System**



PowerCon-PowerCon / XLR-XLR  
2,5 m    Order No. **08462**  
5 m      Order No. **08464**  
10 m     Order No. **08466**  
15 m     Order No. **08468**

## ACCESSORIES K 24 dp

### Rain Cover



for K 24  
Order No. **01255/outdoor**

### Cover



for K 24 without wheel board  
Order No. **01255**

### Cover



for K 24 by using wheel board  
Order No. **01255/WB**

### Wheel Board



for K 24,  
stackable,  
Order No. **01266**

### Flight Case



for 2 pcs. K 24 and accessories,  
heavy duty, 6,5 mm birch multiplex,  
PVC coated, ball corners, 2 pcs  
recessed sprung handles, butterfly  
catches, 100 mm blue wheels, 2 pcs.  
with brake, interior lined with felt.  
Order No. **16030/K24**



K 24 flight case.



Stackable wheel board.