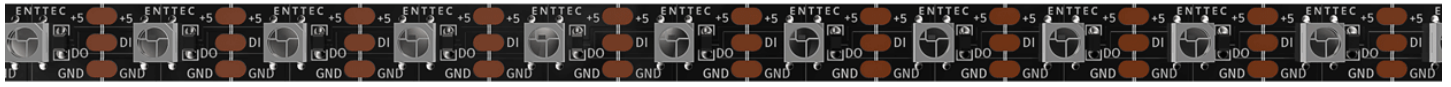


Black pixel tape RGB 8P60-5-B



Features

- RGB, 3 in 1 full colour LED pixel tape.
- Individually addressable led pixels, suitable for both stage and architectural applications
- Available in 60 Pixel/meter densities
- Designed for use with ENTTEC Pixel Link System
- Up to 11.5 Watt/Metre
- Up to 244 Lumens/Metre
- WS2812B chips built into 5050 RGB LEDs
- Each pixel can achieve 16,777,216 full colour display and scan frequency not less than 400Hz/s
- 3M adhesive double side tape at the back
- Built-in data signal reshaping circuit
- 5V DC input supply voltage
- Flexible construction material
- Small LED pitch
- Can be joined together
- Can be cut into a smaller length
- IP20 Indoor use only

Safety

- Do not expose this tape to rain
- Do not allow liquid to build up around the tape.
- Do not exceed the rated 5V DC power supply.
- Please adhere to installation instruction sheet
- This unit is intended for indoor use only, use of this product outdoors voids all warranties.

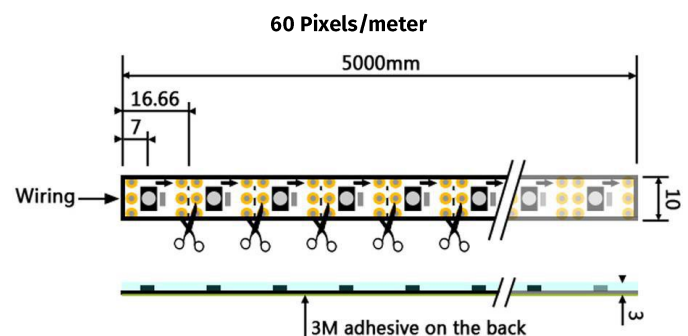
Specifications

Item	8P60-5-B	
Input Voltage	+4.8V ~ +5.2VDC	
Data line Voltage	-0.5V ~ VCC+0.5V	
Watts/meter (max)	Red	3.85
	Green	3.8
	Blue	3.85
	All	11.5
Lumens/meter	244	
DMX Channels/LED	3	
Beam angle	120 °	
Control protocol	WS2812B	
Connector	JST SM connectors	
Weight (5m roll)	250g	
Operating temperature	5°C to 50°C	
Pixel Mapping Order	GRB (Green, Red, Blue)	

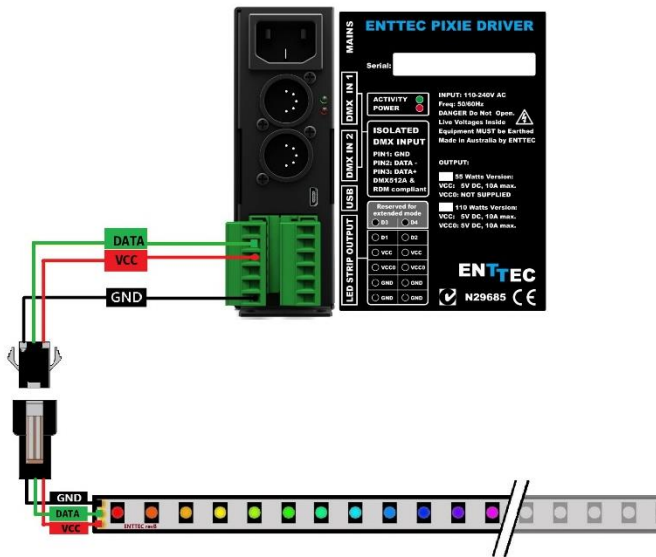
Note

All power measurements (watts/meter) were carried out using 1m of tape supplied with a Voltage of 5V

Physical Dimensions



Connections with Pixie Driver:



Note:

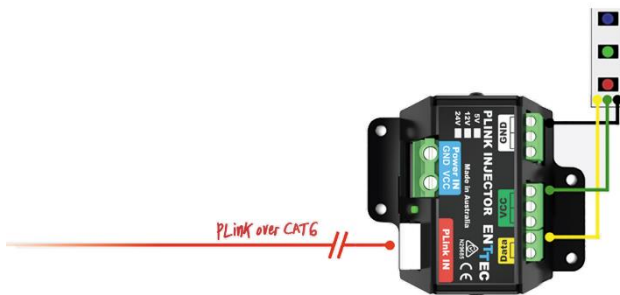
- The wire in the middle of a JST connector is always DATA regardless of color
- It is important to turn off the mains to the devices before doing any led tape connections.

Ordering Information

The ENTTEC 8P Pixel strips and compatible products can be ordered from our website or through your ENTTEC dealer.

Item	Value
73540	PIXIE DRIVER 5V (110 WATTS)
73541	PIXIE DRIVER 5V (55 WATTS)
73546	Plink Injector 5V
8P60-5-B	RGB PIXEL TAPE 60 LEDS/METER 5V - 5M Roll BLACK NO COATING

Connections with Plink Injector:



Note:

- The wire in the middle of a JST connector is always DATA regardless of color
- It is important to turn off the mains to the devices before doing any led tape connections.