

IP55



EN 54-24

COLUMN LINE ARRAY

Description

Suited to both indoor and outdoor use, the VERTUS CLA 803T features eight 3" full range woofers. The VERTUS CLA 803T offers powerful new features for systems integrators facing challenging acoustic conditions. The column features an extruded aluminum construction, and is characterized by an integrated passive directivity control system which delivers a consistent frequency-based vertical dispersion, and which offers users the choice of two angles, NARROW and WIDE, respectively 110°H x 15°V and 110°H x 40°V. The VERTUS CLA 803T is fully modular and include a 100V line transformer with switchable power levels, so multiple enclosures can be linked to increase low frequency control, high frequency dispersion and overall SPL.

The accessories match to the enclosures with sliding guides and integrated quick release pins for an exceptionally quick, easy and effective installation.

Functional features

Completely dustproof and waterproof, the enclosure's grille is covered with a special hydrophobic fabric to ensure absolute rejection of all atmospheric agents. Full EN 54-24 certification can be used for emergency and evacuation applications (in the event of a fire is equipped with a ceramic terminal block and thermal fuse). IP55 rating means suitable for outdoor installations. Ideal for fixed installations in reverberant environments where requiring heightened intelligibility of both music and voice.

Technical specifications

CONFIGURATION	1
RATED OUTPUT	100W / 28.2 Vrms
NOMINAL IMPEDANCE	8 Ohm
NOMINAL IMPEDANCE (100V line)	200 Ohm / 100 W 400 Ohm / 50 W
SENSITIVITY	94 dB ( @1W/1m )
MAX SOUND PRESSURE SPL	112 dB / 100 dB ( @1m/4m )
FREQUENCY RESPONSE	150 Hz - 20kHz ( @ -6dB )
FULLRANGE DRIVER	8 x 3" / 0,75" coil
DISPERSION HORIZONTAL (-6dB) NARROW = WIDE setting	500Hz - 360° 1kHz - 170° 2kHz - 125° 4kHz - 125° 8kHz - 100°
DISPERSION VERTICAL (-6dB) WIDE setting	500Hz - 70° 1kHz - 35° 2kHz - 26° 4kHz - 26° 8kHz - 20°
DISPERSION VERTICAL (-6dB) NARROW setting	500Hz - 70° 1kHz - 35° 2kHz - 18° 4kHz - 10° 8kHz - 10°



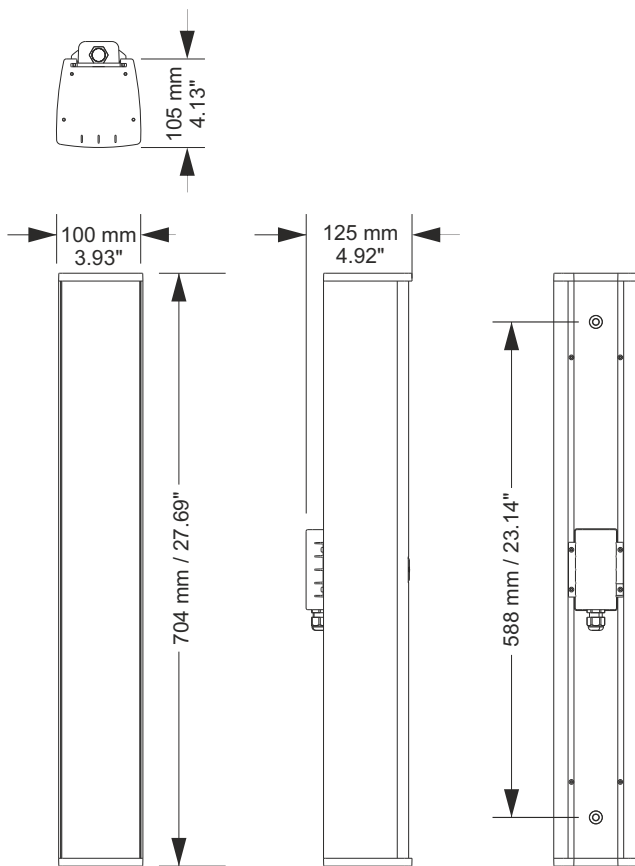
Black or white finish

INPUT CONNECTOR	ceramic terminal block
OPERATING / STORAGE TEMPERATURE	-25°C ÷ +55°C / -40°C ÷ +70°C
RELATIVE HUMIDITY	< 95%
NET DIMENSIONS	100 x 704 x 125 mm 3,93" x 27,69" x 4,92"
TRANSPORT DIMENSIONS	160 x 760 x 180 mm 6,29" x 29,92" x 7,08"
NET WEIGHT	5,5 kg 12,12 lb
TRANSPORT WEIGHT	6,2 kg 13,66 lb

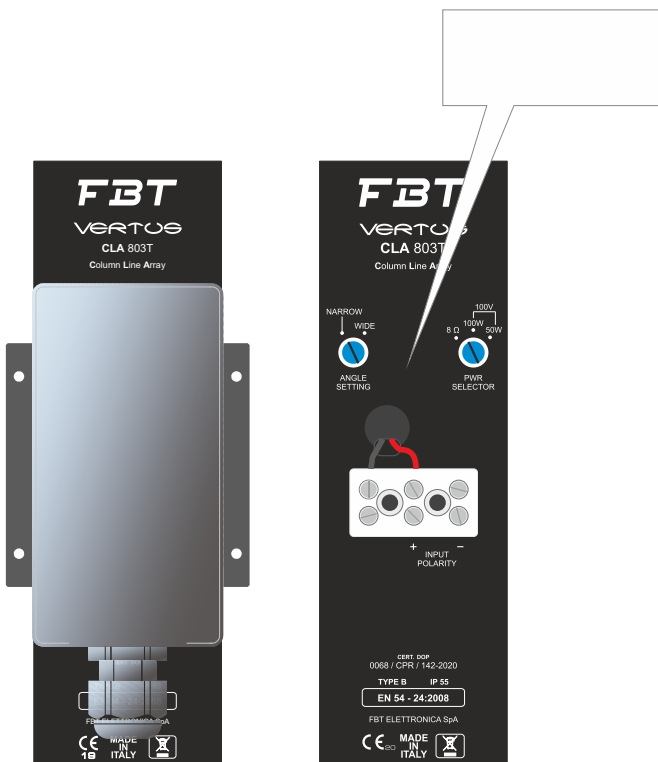
Acoustical measurement environment used for the specifications listed in this table are made in free field condition

EXTERNAL PROCESSING IS RECOMMENDED TO IMPROVE SOUND BALANCE AND RELIABILITY OF THE TRANSDUCERS; SETTINGS AVAILABLE ON FBT WEBSITE PRODUCTS PAGE.

## Dimensional drawing



## Rear Panel



## Accessories

*Flying bar for suspended installation*



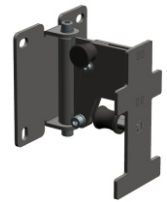
**VT-F3**

*Directional wall mount for horizontal installation*  
0° / 5° / 10° / 15° / 20°



**VT-WH3**

*Directional wall mount for vertical installation*  
-10° / -5° / 0° / 5° / 10°



**VT-W3**

*Directional joint from 0° to 15° for fixing two or more columns together*  
0° / 5° / 10° / 15°



**VT-J3**

*Fixed joint for fixing two or more columns to each other*



**VT-JF3**

*Clamp for attachment to trellis*



**VT-T3**

Model	Weight
CLA 803T	5,5 kg / 12,12 lb
VT-F3	0,5 kg / 1,10 lb
VT-WH3	0,7 kg / 1,54 lb
VT-W3	0,8 kg / 1,76 lb
VT-J3	0,6 kg / 1,32 lb
VT-JF3	0,4 kg / 0,88 lb
VT-T3	0,5 kg / 1,10 lb