



**Multifunktionales und kompaktes 2-Wege System der Oberklasse. Der koaxiale Aufbau sorgt in Kombination mit einem aufwendig entwickelten und großflächigen Horn für ein absolut gleichmäßiges Übertragungsverhalten auch außerhalb der Hauptabstrahlachse. Hochleistungs-Neodymantriebe und Langhubschwingspulen sorgen für einen hohen Wirkungsgrad bei gleichzeitig stark reduzierten Verzerrungen. Für die Installation und den universellen Einsatz stehen neun M10 Gewindeeinätze zur Aufnahme des MultiRigg™ und weiteren Zubehörs zur Verfügung.**

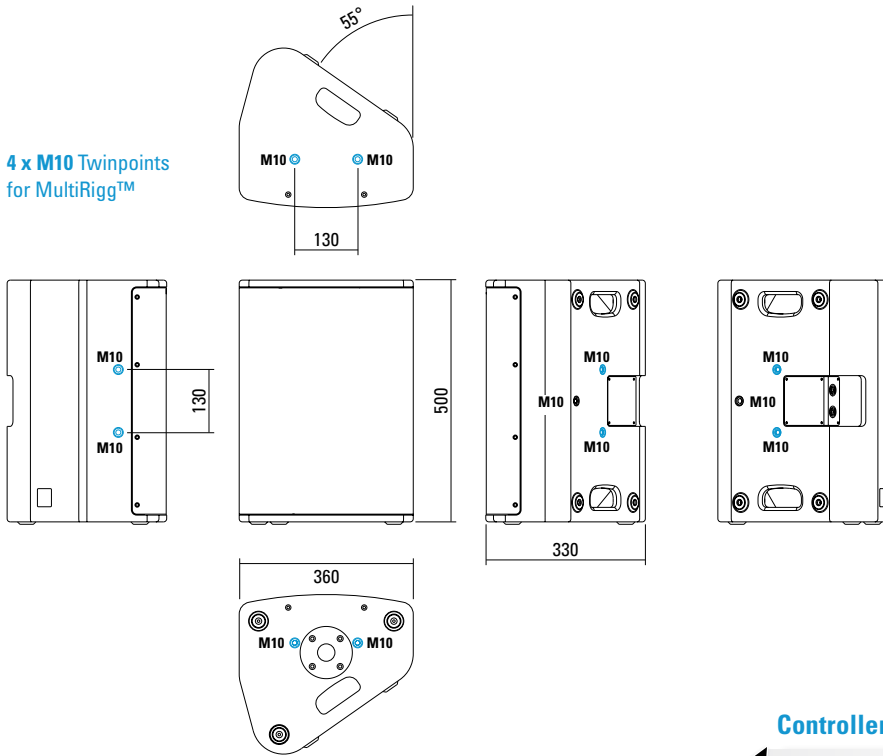
## PRODUCT SPECIFICATIONS

<b>Speaker Components</b>	12" Nd (3,5" VC) / 1,4" Nd (3" VC)
<b>Description</b>	Multifunctional Coaxial Sound System
<b>Power</b> AES / Peak	500 W / 1500 W
<b>Impedance</b> nominal	8 Ω
<b>SPL</b> 1 W / Peak @ 1 m	99 dB / 131 dB
<b>Usable Range</b>	55 Hz - 18 kHz (-6 dB)
<b>Tuning Frequency</b> Excursion minimum	65 Hz
<b>X - Overpoint</b> acoustical	1 kHz
<b>Coverage</b> horizontal / vertical	80° x 60° - rotatable
<b>Connectors</b>	2 x Neutrik Speakon NL4MP in/out Coding: 1 +/- HiMid, 2 +/- loop thru
<b>Handles</b>	2 x
<b>Rigging / Fittings</b>	9 x M10 To be used with MultiRigg 35 mm pole mount
<b>Weight</b>	18,5 kg
<b>Size</b> height x width x depth	50,0 x 36,0 x 33,0 cm
<b>Order No.</b>	<b>01095</b>



## DIMENSIONS

4 x M10 Twinpoints  
for MultiRig™

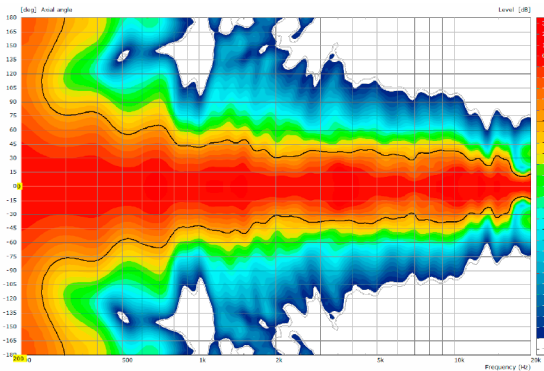


Controller Setups:

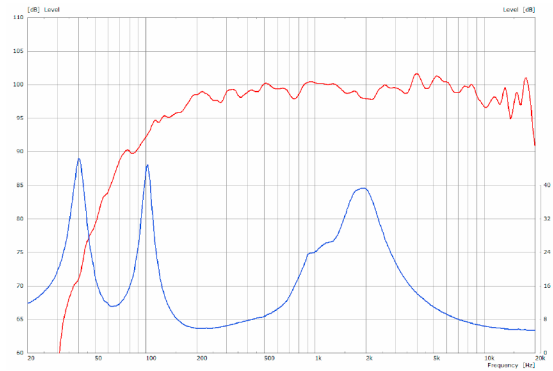
<https://www.seeburg.net/de/downloads>

## MEASUREMENTS

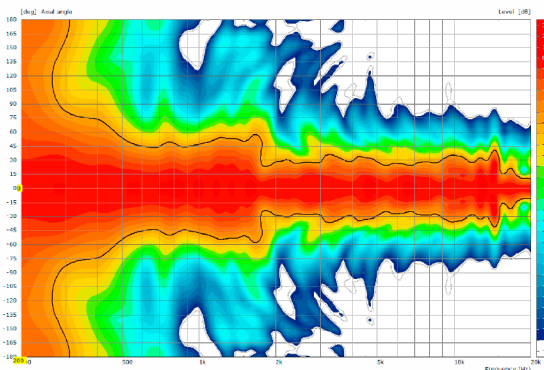
2D Directivity Plot - horizontal



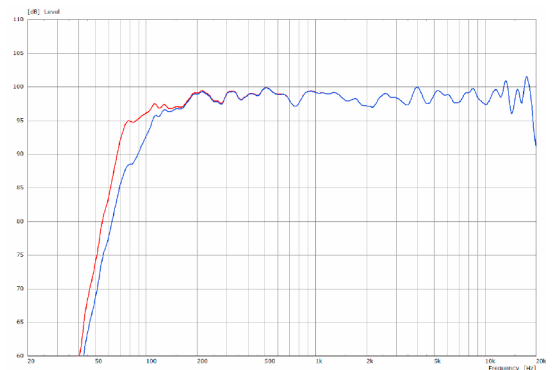
Sensitivity 1 W @ 1 m + Impedance



2D Directivity Plot - vertical



Frequency Response with Presets



## ACCESSORIES X 6

### MultiRigg™



swiveling fastening solution for horizontal and vertical alignment, for flown / ground stacked / mounted applications, incl. accessories (2 x star knob screws M10 x 18 mm, 1 x handle screw M8 x 55 mm), max. load 50 kg  
Order No. **01360**

### Star Knob Screw



M10 x 18 mm  
Order No. **08377**

### Flange



35 mm Ø → M10  
Order No. **08126**

### Knurled Head Screw



reduction screw for fastening M10 Flange (08126).  
Order No. **73755**

### TV Spigot



10 mm internal thread, 28 mm Ø  
Order No. **08128**

### Steel Safety



6 mm x 600 mm, black, max. load 22 kg (BGI 810-3), quick connector undetachably  
Order No. **01376/6**

### Ring Screw



M10– DIN 580  
Order No. **73700**

### Doughty Quick Trigger Clamp



max. load 100 kg  
Order No. **01223/100 kg**

### Wall Mount



with tilt unit, max. load 40 kg  
Order No. **08130**

### Cover



for X 6, padded  
Order No. **01225/X6**

